

ONE TREE HILL GRAPEVINE



This is a free community Newsletter. However a Gold Coin Donation
to the Piggy Bank in General Store would be appreciated.



AUGUST

Volume 34

Edition 7 - 2011

Deadline for the September Edition is Friday 23rd August, 2011

Happy Birthdays



TO OUR FORTHCOMING BIRTHDAYS

Pictured are local horses "Icky" and "Little Man" who reside at Taylors Road.
Happy Birthday to them and all the other horses in the One Tree Hill area.

EMERGENCY NUMBERS

Police: 131 444

Ambulance & Other Emergencies:

Country Fire Service: 000

Station:(When manned) 8280 7412

Hospital: 8182 9000

000

General Business: 8280 7055

Bushfire Info Hotline (24hr): 1300 362 361



www.cfs.org.au



From the Desk



It's that time of the month again, how the time is flying, have you noticed in the shops that the Christmas decorations are appearing....we really hope that it was for the Christmas in July parties and that the shops are really not serious about getting us to buy now for December.

August 1st is as most of us know the horse's birthday. We have featured a couple of local horses on the cover this month, hope you like the picture. We think that it will brighten up any gloomy winter day that is sure to be around in the next month or so. It's wonderful to see some blossom on the trees (almonds) as it's a good reminder that Spring is not far off. There are also plenty of spring bulbs waiting to burst into colour as well in the gardens, next month we will try to feature some of the spring flowers on the cover to inspire you to get out into the garden. Nothing like fresh air to clear the head.

We wish the young Junior Chefs good luck in their bake off at the market on 6th August, if you don't have your entry in please get it to us by email or drop it into the General Store by Thursday the 4th August.

We have also tried to jog your memory about the Pet of the Month on the kids page. Please encourage your children to take a photo of their favourite pet and write a few lines about why they like their pet. Entries need to be dropped off at the Fodder Shop by closing date which is on the front cover of the Grapevine each month. The local CFS is in need of volunteers for the upcoming bush fire season, it would be great to see more people involved in this great service to our town. We couldn't survive a bush fire season without them so come on anyone that has some free time, get involved, it's your Community.

A big thank you to our readers for contributing to our snapshot page this month. Photos are always welcome. Until next month, The Grapevine Team. Phone: **8280 7095** or Email: oth.grapevine@bigpond.com

Letter from the Progress Association. August 2011

Well another month has flown by, what has happened with the weeks?

We all tend to hibernate on these cold wintery days. There is not a great deal happening with Progress at the moment, the last meeting was cancelled as there was no urgent business to attend to. Our next scheduled meeting will be Thursday 12th August, 7.30pm.

If the Progress meetings are cancelled we will endeavour to place a notice on the Institute door, the General Store and of course place a cancel across the roadside sign.

The Institute is still taking a lot of bookings for functions, but if you need a particular date in the coming months please call Pat the hall manager for available dates.

Don't forget we have the Junior Chef competition at the market on the 6th August, we are hoping for a good response so please encourage your children and grand children to enter. It will be a lot of fun. Entries for the August Cup Cake Competition close on Thursday 4th August. Entries can be left at the General Store or you can email them through to oth.grapevine@bigpond.com This is one of the ventures to encourage our youngsters to participate in the community, so please encourage the kids to enter and make this a success. It would be great to see some new faces at the next Progress Meeting, don't be shy, join in and make a difference to this great community that we live in. We hope to see you there.

Members of the One Tree Hill Progress Committee.

Email: oth.progress@bigpond.com or phone **8280 7095**.

The Images of Mother

- 4 Years old—My Mum can do anything
- 8 Years old—My Mum knows a lot! A Whole lot!
- 12 Years old—My Mother doesn't really know everything!
- 14 Years old—Naturally, Mother doesn't know either!
- 16 Years old—Mother? She's hopelessly old fashioned.
- 18 Years old—That old woman—She's way out of date!
- 25 Years old—Well, she might know a bit about it!
- 35 Years old—Before we decide, let's get Mum's opinion.
- 45 Years old—Let's go down the hallway and ask Mum what she things.
- 65 Years old—Wish I could talk it over with Mum!



Great websites to visit:

If you have any favourite sites we invite you to share it with our readers.

www.scoopon.com.au *This site has daily deals for South Australians, it's surprising what you can pick up at a bargain price.*

<http://cudo.com.au/adelaide> *Again this is a great site to get a special deal, subscribe and get emails everyday with new deals.*

www.onetreehillhall.com.au *To view the details of the Institute and editions of The Grapevine.*

This newsletter is published by the One Tree Hill Progress Association. Email: oth.progress@bigpond.com Ph: 8280 7095

The views expressed in this newsletter are not necessarily those of the One Tree Hill Progress Association.

Its purpose is to share local news, views and events. Advertisers are responsible for the accuracy of the content of their advertisement.



YOUR GARDEN IN WINTER

This is not the most inspiring time of year to get out into the garden with many plants sitting on their heels waiting for a bit more warmth to arrive. However it's not too difficult to have colour all year round and your garden should include a selection of plants that flower at different times so that even on the gloomiest of days you should be able to see some colour when you look out of your window. If you don't have any flowering plants currently take a look at other people's gardens to see what could be incorporated into your own garden, or visit your local garden centre or nursery for other ideas.

Keeping on top of the weeds is probably the number one job currently. If you can get rid of these before they set seed it makes an enormous difference to the size of your job in ensuing years. If you have too many to pull by hand, glyphosate based sprays are ideal for pathways etc; Fusilade is good for grasses (not winter grass unfortunately though) and can be sprayed amongst (non grassy) plants without ill effect. Mulch as many "bare" areas as possible.

End of July is the ideal time for rose pruning which, if followed with a feed of Sudden Impact for Roses at the beginning of September, will reward you with a beautiful show during spring.

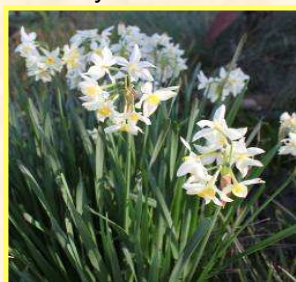
If you have clumps of grasses in your garden, native or ornamental, which are looking a bit tatty, try cutting them right back to about 10cm high – yes, almost to the ground. They will start reshooting almost overnight and you will have a lovely lush fresh clump in no time. From our experience the easiest way to cut grasses is with a pair of scissors or large knife. Clasp a handful of grass at a time and cut through the grass under your fist – done in no time.

Many thanks to Sue and Geoff Stribley for this article.

BELOW: EXAMPLES OF PLANTS CURRENTLY IN FLOWER (JULY/AUGUST)



Winter Iris



Jonquils



Red Hot Pokers



Hebe

New OTH Walking Group

The July Grapevine printed a notice on the back page asking if people were interested in joining me in walking around One Tree Hill. I had a terrific response. We now have 17 people in our new group. We meet at the OTH Deli at 8am on Mon, Wed and Sunday. So far we are walking between 5 and 7.5 kms, we hope to extend our boundaries slightly for example Para Wirra Park when the ground is a bit drier. Not everyone walks all 3 days, some only do Sundays, others are hoping we get more members who would like to walk in the evening or later in the morning. The more members we have the more options we can offer. Even though the weather has not been kind to us we are all really enjoying ourselves.

If you would like to join us please give me a call: Helen 8280 7035.

Watch out for all these slim, taut and terrific people (well, we will be soon!)



Pictured above are some of the group setting out for their walk, undeterred by the wet cold conditions. Great stuff, keep it up...



Read the Grapevine on line

If you haven't had a chance to see the Grapevine on line please go to the site:

www.onetreehillhall.com.au This is a great way to share local news with friends and family who can't get a hard copy of the Grapevine. Happy reading.



ONE TREE HILL GRAPEVINE

CFS REPORT AUGUST 2011

Incident Report



The month has seen an increase in the occurrence of car fires in the area; we have attended 3 incidents, mainly on the western side of One Tree Hill.

On the 12th July a vehicle accident was reported located on the One Tree Hill Road, 1km towards Kersbrook, the actual location was 1 km west from One Tree Hill on Blacktop Road. Fortunately no injuries occurred. This indicates the importance of trying to provide accurate information when reporting an accident. On the 15th July a large truck became trapped on the side of the One Tree Hill Road to Kersbrook opposite Karwin Road, the Brigade assisted police to close the road while a large recovery vehicle removed the truck.

Do you live a few minutes away from the CFS Station?

The Brigade issued a HANDOUT explaining the brigade's need for new recruits in the last Grapevine, thanks mainly to The Grapevine volunteers for making that possible. Unfortunately the response has been very disappointing to say the least. The issue for NON Urban Communities is the need to look after oneself and cannot expect services to be on hand at the drop of a hat.

So I call on those men and women who came to the area for that special country atmosphere to step up and give some of your time to help maintain our great Community.

Reminders

Now is the time to clean up your property for the coming summer season, i.e. by spraying to reduce the undergrowth and weeds. Also spraying fence lines helps to reduce damage to the wooden poles and galvanizing when a fire comes through a property.

For general information please contact OTH Duty Phone of **8280 7055**

You can also visit the CFS website at www.cfs.org.au or Phone **1300 362 361**

Councillors Report

Just on a dozen written public submissions were made to Council in relation to the City Plan and rates determination process, only two verbal representations were made which obviously points to two possible conclusions. Conclusion 1 is that the majority were satisfied with the proposal?? Conclusion 2 is that people feel that it is a waste of their time to make submissions since Council does not listen TO or ACT on their concerns. It is a sad indictment of the times when people feel that they are not listened to and ignored. If this is the case then perhaps it is worth putting those feelings in writing to your Elected members on Local, State and Federal Government as well as the Media.

Council is still waiting for the report on its random customer satisfaction survey and I will give results as soon as they are made available to me.

In July changes were made to the public transport system within the Adelaide metropolitan area including the Northern areas, these changes will not affect bus services to One Tree Hill as we don't have any however if you wish to view the changes to the LUCKY people that do have public transport services the web site www.adelaidemetro.com.au will give all the relevant information.

It may be worth noting that Council assesses pot holes according to size and depth a small hole of 50mm is not considered a pot hole so reporting 23 such holes will do nothing for a person's credibility or Council's resolve to act on any further information given by that person and I will certainly not compromise my credibility by insisting that repairs are effected to such requests. Please continue to report pot holes bearing in mind that resources are in demand all over the City and that the biggest and deepest will have priority.

Please remember that I am available in person at the Country market held on the first Saturday of each month to listen to and advise on your concerns. The Uniting Church approached me with a concern which is now resolved as did several other people with issues that are either resolved or being addressed. I am near the Russian food stand with my olive oil.

If you have any concerns or issues with or about our City, please in the first instance phone **8256 0333** or send your e-mails to playford@playford.sa.gov.au and cc to crjfederico@playford.sa.gov.au this will ensure that council sees your concerns and then forwards your e-mails on to me. If you are uncomfortable with council viewing your comments then please e-mail me at jfederico@internode.on.net if subsequent to that approach you do not receive a timely or satisfactory result please feel free to contact me personally. However I cannot guarantee that I will be able to get any better results but will at least have council reassess their position and provide an explanation as to their resolve and in some cases if not most, reach a compromise that is acceptable to all parties concerned.

Council's 24 hour phone number is **8256 0333** for all your enquiries and or requests. Remember to get a Customer Reference Number (CRN) to ensure registration and easy identification of your communication.

Cr Joe Federico Phone: **0417 016 164** Fax: **8280 7963**



ONE TREE HILL REAL ESTATE



Fay Hull
0407 962 884

Top selling agent in the area
Want top dollar & a quick sale
Don't waste a day - sell with Fay!

Brock
Harcourts

Brock
Harcourts Rural
GLOBAL. NATIONAL. LOCAL. YOU

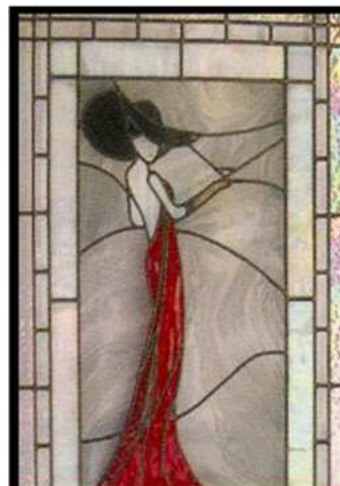
Shop 3 Blacktop Road, SA 5114
Phone: 8280 7775
Web: www.brockharcourts.com.au
RLA: 201543



Welcome to Liz Summersides our new Property Consultant. Liz, a long term resident of the Northern Hills has extensive building experience and is proving a valuable asset in real estate.

FREE APPRAISALS by your area expert

We have an extensive data base of genuine buyers looking for properties in the Northern Hills!!



**CATTELL
CREATIONS**

Specialists in

Stained Glass

Leadlight

Splash Backs

and NOW assorted

Furniture at very
reasonable prices!



Lot 12 Blacktop
Road One Tree Hill

Call Dave

8280 7800

**Birdwood Pump
& Irrigation Services**

Now Servicing the One Tree Hill area

**We Specialize in
Agricultural Bores, Pumps & Irrigation
All Makes & Models Available**

**Call David
0438 685 089**



Agents for Grundfos Sales



ONE TREE HILL FODDER STORE

1st BIRTHDAY CELEBRATIONS!



Supercoat
18kg
\$49⁵⁰
all varieties



Golden Yolk
20kg Chicken Pellets
2 for
\$26



10% OFF RRP
Suitable for Car, Quad,
Ride-ons, Mowers



Green N Gold
30kg Horse Pellets
\$19⁹⁵



Gas Cylinder Refills
8.5kg BBQ
\$20

For all you
Irrigation Needs
Distributor for
maxiplas

Shop 4, 9 Black Top Rd, One Tree Hill • Ph: 8280 7680

GRENVILLE SUNSET MARKETS

We will have a range of stalls offering handmade art, locally grown & produced food, jewellery, vintage & handmade clothing, children's toys, soft furnishings and plants all from the Northern Region.

**First date: Friday August 26th 2011,
4pm - 9pm**

**Venue: Grenville Community
Connections Hub,
Playford Boulevard, Elizabeth**



To express interest in holding a stall or for more information please contact Natalie Robinson on 8256 0372 or nrobinson@playford.sa.gov.au



No Job
Too Big or
Too Small

Professional Tree & Stump Service
Call Brad for FREE QUOTES

on: 8365 8000

**Don't Forget to ask for our
Special Grapevine Price....**



Wedding
Engagement
Naming Day



Special Birthdays
including Children's
Reunions
Meetings or Other

Now on the web: onetreehillhall.com.au

**One Tree Hill Institute
Hall for Hire**

Call 0459 105 045 or 8280 0000
Email: oth.hall@bigpond.com



AN ASSOCIATE OF THE
NIA
NATIONAL
INSTITUTE OF
ACCOUNTANTS

Raine & Horne®



0417 847 810

davidk@rhsa.com.au

Raine & Horne North East
1289 North East Road Tea Tree Gully SA 5091
RLA 182438 ph : 83952233

FREE APPRAISALS

By Area Specialist

Thinking of SELLING!

Thinking of BUYING!

it's as EASY as 1,2,3

Call David & Jamie



0414 267 547

jamien@rhsa.com.au

SUMMER IS COMING, BEAT THE RUSH, WE HAVE BUYERS WANTING TO LIVE IN ONE TREE HILL AND SURROUNDING AREAS. CALL TODAY!

Rob Green Security

Servicing, Installation, Monitoring
Your Local Technician

Ph: 0419 398 346



Handy Hints For Shoes

Clean fleecy lined boots and sheepskin by heating some bran in the oven and rub well into the wool. When dry brush or vacuum off. This can be repeated if needed.

When shoe polish dries up, add a few drops of olive oil to the tin and mix well.

Loosen tight shoes by soaking a cottonwool ball in rubbing alcohol. Rub well into the tight spot and wear shoes. Do this until they fit comfortably.

Spray new runners with spray starch to keep them white longer.

Rub suede shoes with fine sandpaper to remove any grease or dirt or you could try fine steel wool.

Paint the heels of new shoes with colourless nail polish, it prevents scuff marks, great for kid's shoes.

SEPTIC TANKS PUMPED OUT

For good old fashioned service call

8283 3656

Or Trevor on 0417 000 365



**SEPTIC
PUMPING
SERVICES**

Email: septic1@bigpond.com

Web: www.septicpumpingservices.com.au

The Northern Foot Clinic

Heel Pain, Sports Medicine, Aching Feet, Children's Feet
Ingrown toenails, Plantar Warts, Orthotic therapy, Mobilisation

Pain relief today and prevention for your future

* 109 Haydown Rd, Elizabeth Vale (onsite parking)

* Shop 4 Cheek Ave, Gawler East (onsite parking)

DVA, Hicaps. Medicare (GP approved only)

8287 3888

PROPEST 1800 24 22 21
management services

**We service any pest
No problem!**

PO Box 684 St Agnas

Residing Humbug Scrub

* Termite/White Ant Removal * Termite Baiting Systems

* General Pest Control * European Wasp & Bee Removal

* Existing and Pre Purchase Property Inspections

* Weed Eradication * Free Site Assessment

www.propestcontrol.com.au

AS/NZS ISO 9001:2000
QUALITY CERTIFIED COMPANY

**NCPS
INDUSTRIAL**

**Pumps, Generators, Hose & Fittings
Servicing the One Tree Hill Area**



Present this
advertisement for
15% off
recommended
retail price on
DAVEY household
pressure, sump &
pool pumps also
MEDO septic air
blowers



U2, 1445 Main North Rd,
Para Hills West S.A. 5096
Ph: 8285 2344

Email: sales@ncpsindustrial.com.au

Web: www.ncpsindustrial.com.au

(Opposite Bunnings Parafield)



PLAYFORD HOME ASSIST SERVICES



Home Assist can provide a range of in-home support services to assist frail older people, younger people with an aged related disability and their carers to remain living independently in their own homes.

- Domestic Assistance
- Shopping transport
- Transport to medical appointments
- Personal care
- Minor home maintenance
- Advocacy and referral

An initial assessment is required to determine eligibility and to ensure the service meets individual needs.

Please ring 8256 0355 for further information

Kids Page

Hello and welcome to another page in the Grapevine especially for kids. I hope that you have all enjoyed your school holidays. We have had some beautiful days so I hope that you have made the most of the bright sunny days we had on the last week of the holidays and spent the day exploring outside. Maybe you helped Mum and Dad in the garden or helped look after the animals, whatever you did, I would love to hear about how you spent the holidays and perhaps we could publish your story. I wonder how many of you will be entering our 1st Junior Chef competition, don't forget you will have to register by Thursday the 4th of August to be eligible to enter. The competition should be great fun, each month it will be a different item that has to be cooked. Speaking of competitions, I am a bit disappointed to hear that we do not have a winner for the Pet of the Month in this edition. Perhaps you have all been too busy, hopefully next month we will have some entries. Don't forget drop off a photo and short story to the Fodder Store by the deadline date on the front cover of the Grapevine. Until next month, Auntie Bev.

Some Brainteasers for you think about! (Answers are below)

- 1: What occurs once in every minute, twice in every moment, yet never in a thousand years?
- 2: If it takes 6 men 1 hour to dig 6 holes, how long does it take one man to dig half a hole?
- 3: Two Men play 5 complete games of checkers, each man wins the same number of games. There are no ties. How?
- 4: A farmer has 17 sheep. All but 9 of them die. How many sheep does he have left?
- 5: If there are 3 apples and you take away 2, how many do you have?
- 6: Why do more Chinese men eat more rice than Japanese men?
- 7: What word describes a woman who does not have all her fingers on one hand?
- 8: How many apples can you fit into an empty box?
- 9: What 5 letter word becomes shorter when you add two letters to it?
- 10: You walk into a room with a match. In the room there is a stove, a heater and a candle. Which one do you light?
- 11: The fishmonger is 1.8 metres tall. He wears size 8 boots and wears an XXXL shirt. What does he weigh?
- 12: A red house is made from red bricks, a blue house is made from blue bricks, a yellow house is made from yellow bricks. What is a greenhouse made from?
- 13: A rooster lays an egg on the top of the roof! Which way does it roll?
- 14: What has 6 eyes, but cannot see?
- 15: What can you catch but can't throw?
- 16: Scientists have proven that one side of a cat has more hair, which side?
- 17: What are 4 things that have an "eye" but cannot see?
- 18: What do you call a frog with no legs?
- 19: Before Mount Everest was discovered, what was the highest mountain in world called?
- 20: 2 People are in the shed, 10 cats follow them in. How many feet are in the shed?

1: The Letter M 2: There is no such thing as half a hole 3: The 2 men were not playing against each other 4: Nine 5: If you have taken 2 apples then of course you have 2 6: Because there are more Chinese men than Japanese men 7: Normal—I wouldn't be happy if I had all my fingers (10) on one hand! 8: One, then it isn't empty! 9: Short 10: The Match 11: Fish 12: Glass 13: Roosters don't lay eggs! 14: 3 Blind Mice! 15: A cold 16: The outside 17: A needle, a potato, the alphabet and a hurricane! 18: A tadpole! 19: Mount Everest! 20: There are 4 feet in the shed, cats have paws, not feet!

Some Horse Funnies for the horses Birthday on 1st August

- Q: A man rode his horse to town on Friday. The next day he rode back on Friday. How is this possible?
A: The horse's name was Friday!
- Q: Why did the pony have to gargle?
A: Because it was a little hoarse!
- Q: What did the horse say when it fell?
A: I've fallen and I can't giddyup!
- Q: What did the teacher say when the horse walked into the class?
A: Why the long face!
- Q: What do you call a horse that lives next door?
A: A neigh-bor!
- Q: When does a horse talk?
A: Whinney wants to!
- Q: What do you give a pony with a cold?
A: Cough Stirrup!
- Q: What is a horse's favourite sport?
A: Stable Tennis!



NUMBER SEARCH Can you find the hidden numbers listed below? They may be horizontal or vertical.

9	8	8	7	6	5	7	4	8	3	3
7	8	9	9	8	7	2	3	4	4	2
0	2	9	3	7	5	7	3	8	2	9
1	1	4	4	6	6	3	8	4	7	3
9	9	8	7	4	8	3	9	2	3	6
7	8	9	7	8	9	2	3	4	4	3
8	3	7	3	7	3	8	2	9	3	1
9	2	9	2	8	3	7	5	6	5	6
1	9	3	8	3	7	2	2	1	3	9
6	5	7	4	7	3	8	2	9	3	8
7	4	8	3	3	9	8	7	8	3	2

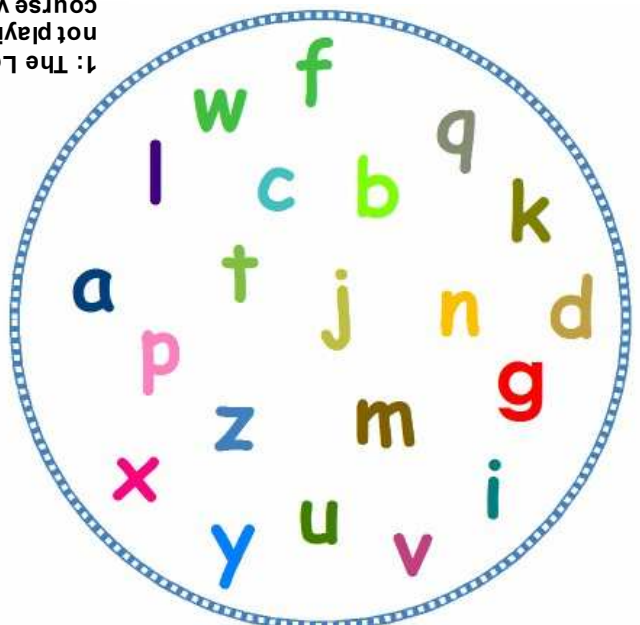
02937, 16982, 19832, 22139, 23442, 33987, 42734, 47382, 47732, 56893, 63847, 78916, 78923, 84842, 92928, 93252.



Can you find the letters that are missing in the puzzle below?

The letters will spell the name of an animal that is very popular with children!

The answer is on the back page.



News from OTH Scouts:

They say "Only mad dogs and Englishmen stay out in the midday sun"well; only scouts and Uni students from Saudi Arabia braved the cold of Mt Crawford Forest in the teeth of winter. The cold was bitter but that didn't dampen the enthusiasm of 30 scouts and friends from the OTH scout group, who went to play outdoor laser skirmish recently. Outdoor laser skirmish is like playing war games with full sized weapons on a large wooden field. It was so much fun that after 5 minutes, we'd all forgotten the cold and were planning our team strategies, hiding in a thicket or running headlong at an enemy position. The team spirit that prevailed made this a great adventure for all who attended.

Some of the photos from the event appear on the following page (page 12).



Grants for 2011

Michael O'Brien's office has advised that applications for the Volunteer Support Fund are now open. This fund enables community organisations to apply for funding to help them foster and support their volunteers. Individual grants of up to \$3,000 will be allocated for initiatives that assist volunteer programs.

Volunteers make an outstanding contribution to South Australia and the Government is committed to supporting and developing volunteering in our state.

Volunteer Support Guidelines and application forms are available from Michael O'Brien's office or can be found on the Office for Volunteers website at <http://ofv.sa.gov.au/fund.htm> Further information on the fund can be obtained from the Office of Volunteers on (08) 8463 4490. Closing date for the application is Monday August 22nd 2011.

Grant for Seniors and The Positive Ageing Grant

The seniors grant is aimed at the purchase of equipment and other types of assistance for community organisations.

Successful grant recipients will receive between \$500 and \$5,000 per grant. The Positive Ageing Grants are aimed to promote choices and opportunities for older people to remain connected to their communities. The 3 themes for the Positive Ageing Development Grants are * Enabling Choice and Independence * Participation and Learning * Positive Perceptions.

The funding is advertised in the local Messenger. Applications close on Friday 5th August. Please contact Michael O'Brien's office for more information. Phone: 8284 7388

Horse Care - Licks for Nutrition

So called "salt licks" can carry many traces of nutrients.



The One Tree Hill area is often deficient in copper, cobalt and selenium unless previous owners have supplemented with these elements. Beware, they can be toxic in large quantities. Animals seem to be able to select what they require without overindulging, if given a good selection. For this reason, it is better to offer a range of supplements in free choice than to add them to the feed. Salt licks allow us to do this by providing nutrients in a salt or molasses base that is convenient for us to feed. If several are put under cover, where animals can help themselves without the block deteriorating in rain, then they will manage their own supplementation.

An example: I had a 15 month old horse which persistently ate the green posts of his fence. Electric wires only had him stretching around them. Inspiration came when I realised I had not replaced the copper/cobalt block that had been in my horse yard. On its introduction, he licked his tongue raw. I used a rasp to powder some of the block and removed the block from the yard. 2 days later, I added more powder, and 2 days after that reintroduced the block. Although he licked it, he had caught up the deficit and was now happy with a few licks. He also left the green (copper arsenate) posts alone. His diet was copper poor.

Feed utilisation improves if the trace minerals are in correct balance, making it cheaper to feed supplements than to do without them. This was made clear when I had dairy goats. Supplementing gave a quick and obvious indicator as their milk production changed.

Carefully choose the type of lick to suit your animals and situation. Some profess to have "all" but analysis shows they have minute amounts of some things and 99% sodium chloride. You should never feed urea to horses; it is likely to be toxic. Premix feeds will have some nutrients but at lower rates than may be optimal for you. An example is copper: do not supplement with it if you live around Kapunda as the soil is already rich. So feed manufacturers under supplement with it to prevent over supplementing.

Allow your animals to choose from a variety of different licks for best utilisation of feed and best health.

Many thanks to Julie for her regular articles on horse care. If you would like to ask Julie a question please email: oth.grapevine@bigpond.com

Steven O'Connor
Naturopath, using Herbal and Nutritional
Remedial Massage Therapist
Dip App Sc(Ag), Adv Dip W Herb Med, Adv
Dip Nut Med, Adv Dip Nat, Dip R Massage
For chronic pain and alternative medicine
using herbs and nutritional medicine
Health Rebates Apply
Kilberin Cornishmans Hill Road
One Tree Hill S.A 5114
82807003 0407820422



The Engine Bay
For all your Automotive Repairs
Call out Services
Available for Tractors and
Earth Moving Machinery
Servicing the
One Tree Hill area
8283 0211
Auto Repairs For Farm Machinery
49 Saints Rd. Salisbury Plain

Winter Jokes: It was sooooo.. cold the other night, we had to stop eating with metal cutlery. Some people walked around for days with spoons or forks stuck to their tongues!
It was sooooo...cold the other night that roosters were rushing into Kentucky Fried Chicken and begging to use the pressure cooker!
It was sooooo...cold that the optician was giving away free ice scrapers with every pair of glasses.
It was sooooo...cold that the kids were using a new excuse for staying up late: "But Mum, my pj's haven't thawed out yet!"





PROUDLY SUPPORTING SA!

EVERY Car, EVERY Part, EVERY Day.




SPRINT has all your parts & accessory needs!

Fluids!

Hard Parts!

Car Care!

With 35 stores, we're always just around the corner.

PROUDLY SA OWNED & OPERATED SINCE 1984

35 STORES - OPEN 7 DAYS*

GET DISCOUNTS ON PARTS & ACCESSORIES!

BECOME A SPRINT AUTO PARTS VIP CLUB MEMBER

For your nearest store, go to www.sprintautoparts.com.au





EVERY Car, EVERY Part, EVERY Day.
For your nearest store, go to www.sprintautoparts.com.au





The OTH Scouts recently attended a laser skirmish at Mt Crawford, full report of the event is on page 11.

Above from Left: Luke, Flynn and Thomas.
Bottom: Going through strategy's.

Another recipe, just like Mum used to make.

Baked Roly Poly Pudding

Ingredients:	1 cup margarine	2 cups S.R. Flour
Water (Use about 150ml)		1/2 cup Sugar
2 cups boiling water	2 tablespoons butter	jam

Method: Rub margarine into flour and mix with a little water. Roll out and spread with jam. Roll up and place in a pie dish (well greased). Dissolve sugar and butter in boiling water. Pour this over the roly poly and bake at 180deg for approximately 30-35 minutes or until golden brown. (Grated apples may also be used instead of jam—add a little more sugar for this, another idea is to use Golden Syrup instead of jam). Serve with fresh cream or custard. Enjoy.



Mushroom Mornay

Ingredients: 2 tablespoons butter	2 tablespoons plain flour
2 cups milk	2 large tins mushrooms
1 tin of mixed vegetables	2 large onions

Please note that fresh vegetables and mushrooms makes this extra nice.

Method: Fry onions until golden brown, then cool. Melt the butter in a large saucepan, add the plain flour stirring well, then add milk slowly and stir for 3 minutes until nice and smooth and bubbling, remove from the cook top and add mushrooms, mixed vegetables and cooked onion, add salt and pepper, heat again until thick and smooth and pour into a large pyrex dish, cover with stale breadcrumbs and dot with butter, bake at 180 deg until it looks golden brown.

This is great served with a salad or on it's own.



*Just like
Mum used
to make!*

If you have a favourite recipe you would like to share with the Grapevine readers please email: oth.grapevine@bigpond.com

E & A Vanin



LOCAL PLUMBING SERVICES

DOMESTIC-COMMERCIAL-INDUSTRIAL

- General Plumbing Maintenance
- New Homes & Extensions
- Drains & Stormwater
- Bathroom Renovations
- Hot Water Service Changeovers

REGISTERED MASTER
PLUMBER

EDDIE VANIN PROPRIETOR

M: 0412 394 689

Home/Office 8280 7970

WOMBAT'S

- * Bobcat & Tipper Service
- * Excavator 4.5 tons
- * Pig trailer & tipper (24tons)
- * Concrete/Pavers prep & removal
- * Post hole boring (350m-450m)
- * Trench hole digging to (1200mm)
- * Shed site prep
- * Rainwater tanks prep
- * Driveways
- * Stock burial
- * Civil work
- * Retaining wall prep



Phone: John Mancone

0417 456 656

Uleybury

"ADELAIDE NORTHERN VETERINARY GROUP"

Drs. ALAN & ROBERT IRVING, B's.V.Sc

Modbury—Salisbury—Elizabeth East—Elizabeth Park

Ph: 8280 7353 or M:0419 806 213



www.adelaidenorthernvet.com.au

Email: alanirving@internode.on.net

ENJO[®]

CLEAN THE WORLD

For product enquiries, demonstrations
and all your enjo needs contact...

Beni Hite

Ph: 8280 7815 or Mob: 0403 763 826

Advertising Rates for 2011

Colour ads: 1/8th Page \$30.00 Quarter Page \$60.00 Half Page \$150 Full Page \$350

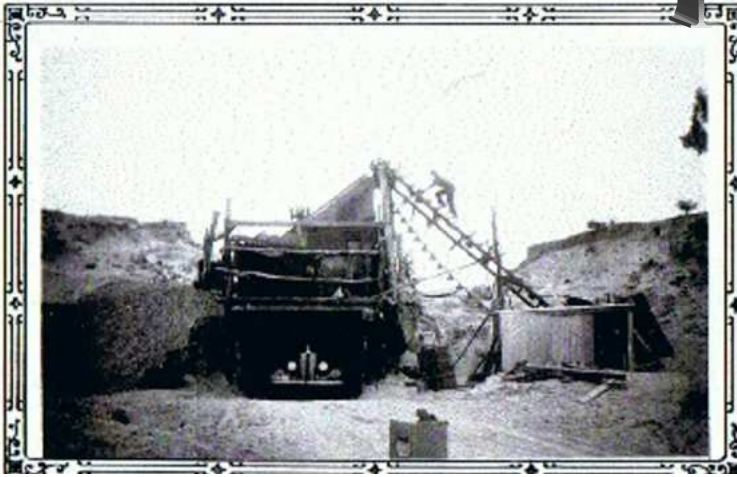
Black/White: 1/8th Page \$20.00 Quarter Page \$40.00 Half Page \$100 Full Page \$250

Classified ads: Just \$8.00—Great for promoting Business or Garage Sales or items for sale.

Please ensure that all adcopy is sent to the Grapevine by the deadline (on front cover) at

oth.grapevine@bigpond.com or phone: 8280 7095

One Tree Hill Snapshots from the Past



Above: The swede garden grown on a local property on the OTH to Kersbrook Road approximately 70 years ago.

Pictured is Ernest Paine Snr with some local children.

Top Left: The Sand Pit that Ernest Paine worked at, they supplied the truck to cart the sand to Elizabeth & Salisbury for building purposes.

Middle Left: This is the road from Shillabeer to Golden Grove in the early days.

Bottom left: This is Ernest Paine who had previously built his own house on Sampson Flat, he then built this huge tank by hand up on the hill which then would supply the house, milking shed, fruit & veg garden with water.

Below: Sampson Flat in it's early days when in flood. The view is from Shillabeer Road to OTH township.





This photo has turned up for us to share with all of our readers of the Grapevine.

Unfortunately we don't have the names of the men who are pictured or why they sat for this pose in One Tree Hill.

Perhaps you may recognise someone in the photo and have some information for us.

Somebody told us that it may have been the Cricket Club. If you think that you know something about this photo we would love to hear from you.

Phone: 8280 7095 or email us at oth.grapevine@bigpond.com.au

If you have any early photos of One Tree Hill that you would like to share with the Grapevine please get in touch.

ONE TREE HILL

GENERAL STORE & POST OFFICE

Friendly, Fast,
Efficient Staff
always available
to serve you!



Phone
orders
Welcome

The General Store's Opening Hours are :

Monday's to Friday's from 7am till 6pm

Saturday, Sunday and Public Holidays 8am till 5pm

Varied Menu includes: Pop Corn Chicken,
Extreme Burgers Seafood Packs, Pork Spare Ribs,
Plus our original delicious menu.

We are constantly changing so come in and see us.

Agents for:



PH: **8280 7020**



Kamcheyenne Limousin

Shillabeer Road, One Tree Hill



Side of Beef Sales \$7.50 per Kilogram
(average weighs 90—100kg)

No chemicals, hormone growth promotants or antibiotics used in our feeding regime.

Our animals are also raised using stress free handling practices.

Limousin Beef is naturally extremely low in fat, we guarantee tender, lean meat.

Sides are cut to your requirements by a butcher and we deliver it to your door in a refrigerated vehicle.

90kg Sounds Too Much!!

Why not go halves with a neighbour, friend or a family member!!

Enjoy red meat again without the guilt or worry of adding fat to your diet.

To find out more, or to book a side of beef please call John on 0427 131 018 or Sarah on 0402 099 106

Kenton Communications

- Data & Phone Outlets
- Digital T.V. antennas
- T.V. Outlets
- T.V. & Home Theatre Installation
- Optic Fibre Cabling & Terminating
- Telephone Systems
- Domestic & Commercial



Contact Brett Harding - **0400 783 196**

Email: brett@kenton.com.au

ABN 98 474 688 522 Cabling Licence No. T28396

GOVERNMENT ENDORSED ANTENNA INSTALLER

ELECTRICIAN

Justin Kerkman

A Class Electrician & Local Resident

Lic. No: PGE 230505

Safety Switches & Faults

Lighting / Fans / Sensors

Sheds / Update Switchboards

Generator Connections/Fire pumps

All Jobs, Small & Large

Phone: 0412 880 532 or 8280 7212

"Your Local Electrician"



Just NISSmaz

NEW, USED, RECO PARTS
Cars, Commercial & 4WD's



Ph: (08) 83591444

nissmaz@neonet.com.au



Wedding
Engagement
Naming Day



Special Birthdays
including Children's
Reunions
Meetings or Other

Now on the web: onetreehillhall.com.au

**One Tree Hill Institute
Hall for Hire**

Call 0459 105 045 or 8280 0000

Email: oth.hall@bigpond.com





DISTRIBUTION 360 Pty Ltd

Waste to Resources

Rubbish Bins and Mini Skips

from 2m³ to 60m³

Daniel 0414 280 891
Ken 0488 360 360

D3



COMPLETE **HIRE** Equipment & Trailer

KANGA LOADERS - BOBCATS - EXCAVATORS

TRAILERS ALL TYPES INCLUDING TIPPERS

HORSE FLOATS

TRUCKS & TRADIE GEAR



EARTH MOVING REQUIREMENTS

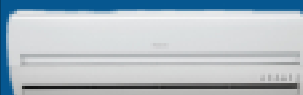
* CARTING * SPREADING * RUBBISH REMOVAL

**WE CAN
DELIVER!**

Phone: Jason on 0418 823 287
or John on 0410 104 418

Lot 10 Paxton Street, Willaston
ABN: 51 008 178 979

Air Conditioning & Complete Electrical Split Systems



Servicing the One Tree Hill Area

Deal Direct With Local Tradespeople
Phone for a FREE Quote Today

Air Conditioning & Electrical Installations
'We can Supply & Install Wall Split Systems
Or Ducted Split System Air Conditioners'
All Brands Available

Call Now & Have Your Unit Installed Before Summer

Phone: Peter, Ryan or Leon Moyle

0407 463 310 A.H. 8280 7442

Email: completesplits@gmail.com

PGI139465 L051080

COMMUNITY DIRECTORY

Hall Hire	Ph: 8280 0000 or 0459 105 045	
Council Member	Joe Federico	0417 016 164
C/Member & JP	Andrew Craig	0417 016 160
Country Market	June B	8287 3306
Cricket Club	Brian Walter	0418 815 047
Friends of P/Wirra	Patsy Johnson	8280 7279
Home Assist	Playford	8256 0355
North Lakes Golf	Charlene	8284 0655
N/ Hills Pony Club	Kylie Scheffers	0422 882 184
OTH Grapevine	Editorial Team	8280 7095
OTH Progress Assoc.	Secretary	8280 7095
OTH Playgroup	Monday	0448 354 990
OTH Playgroup	Wednesday	8284 4555
OTH Primary School		8280 7027
Playford Band	Ivor McLatchie	8280 7214
School of Dance	Diane McLean	8280 7569
Scout Group	Trevor	8255 3155
Senior Citizens	Lance Walter	8280 7259
Soccer Club C/P	Ray	0423 029 626
Soccer Club Registrar	Sonia	0413 452 993
Tai Chi	Gail	8284 0022 or 0402 440 710
Tennis Club	Gary	8280 7067 or 0415 399 658
Wine Grape Growers		
(OTH Region) Ph: Fay 8284 0201 or Natalie 8280 7335		

Roof Maintenance

Roof maintenance during winter and spring in preparation for the bush fire season is a must for those of us that live in the One Tree Hill area, here are some handy hints that will help keep your home safer in the bush fire season.

- ♦ Prune trees around your home
- ♦ Clean gutters and also check that your downpipes are clean and free of leaves and debris
- ♦ If possible install a metal leaf guard to your gutters, one suggestion is a metal mesh guard that has 6mm holes. This particular type keeps leaves and gum nuts out but also allows water in. Do your research with this idea in mind and with cost consideration.



Handy hint for stain removal.

Ballpoint ink: this will come off most washable fabrics by sponging with methylated spirits. Always rinse thoroughly. Another method is to use hair spray, wipe off with dry cloth.

Candle Wax or Chewing Gum: Wait until it hardens, rub with ice or place garment in a bag and into the freezer for a few minutes. Then scrape off as much as possible. Loosen remains with white vinegar. Launder in usual way.

Aussie Inventions and Achievements - Continuation from the July issue of the Grapevine

- 1928:** Charles Kingsford Smith and his crew performed the world's first air crossing of the Pacific Ocean.
- 1928:** Speedo Swimwear, this originated in Sydney when the MacRae Knitting Mills manufactured the company's first swimsuit, the razorback, made from silk and joined in the middle of the back. Speedo introduced the world's first nylon swimsuit in 1957.
- 1929:** Pedal Wireless, the pedal operated generator, connected to a wireless was invented by Alfred Traeger.
- 1930:** Letter Sorting Machine. Sydney GPO was the site for the mechanized letter sorter which was developed by an engineer with the Postmaster-Generals Department.
- 1933:** Utility Vehicle, the ute, with a front like a car and rear like a truck this was designed by Lewis Bandt at the Ford Motor Company in Geelong, Victoria.
- 1941:** Penicillin production starts. Penicillin, extracted and refined by a team led by Howard Florey, was trialed successfully on humans, and went into production in time to treat casualties of World War II.
- 1945:** Hills Hoist. This rotary clothesline with a winding mechanism allowing the frame to be raised and lowered was invented by Lance Hill of Adelaide.
- 1946:** Shepherd Castors. George Shepherd invented strong, easily maintained manoeuvrable dome shaped castors for furniture. These replaced traditional pivoted wheel castors.
- 1947:** Cloud Seeding. Scientists at CSIRO conducted the first successful cloud seeding experiments, making rain fall near Bathurst, NSW.
- 1950:** School of the Air. The first ever radio lesson was broadcast using the transmitter at the Australian Royal Flying Doctor base at Alice Springs, NT.
- 1952:** Victa Lawnmower. The Victa version of the petrol lawnmower with rotary blades which became an Aussie icon was developed by Mervyn Victor Richardson.
- 1952:** Atomic Absorption Spectrophotometer. Sir Alan Walsh of the CSIRO invented this instrument used for high speed chemical analysis of metallic elements.
- 1953:** Solar Water Heater. The first prototype of a solar water heater was developed at CSIRO in Victoria.
- 1956:** Redback Spider Antivenom. An antivenom for the bite of the redback spider was developed by Dr Saul Weiner was released for use.
- 1957:** Permanent Crease Trousers. The process of producing permanent creases in fabric was developed by Dr Arthur Farnworth of CSIRO using a special resin to wool fibres to change their chemical structure.
- 1957:** A.E. Bishop Holdings Pty. Ltd. The company was established by Dr Arthur Bishop, beginning his life's work as an international leader in vehicle steering innovations.
- 1958:** Black Box Flight Recorder. Dr David Warren in Melbourne invented the first black box flight memory recorder. The unit recorded the pilot's voice and a few instrument readings.
- 1958:** Round-The-World Airline Service. Qantas inaugurated a pioneering round-the-world airline service with two aircraft taking off from Melbourne.
- 1960:** Plastic Spectacle Lenses. Scientific Optical Laboratories designed the world's first plastic spectacle lenses which are 60% lighter than glass lenses.
- 1961:** Ultrasound. George Kossoff and David Robinson built the first ultrasound scanner at the ultrasonic's institute in the Commonwealth Department of Health.

We hope that you are enjoying the article on Aussie Inventions, we hope to bring you more next month if room permits.

Looking for Roller Shutters?

For a **FREE** Measure & Quote
Call Your Local Supplier



ESJ INSTALLATIONS PTY LTD.

One Tree Hill

Contact Earl on 0409 426 255

or A/H: 8280 7741

**A1 Quality Workmanship & Materials
Repairs and Conversions on Existing Shutters**

**WE WILL NOT BE BEATEN
ON PRICE!!**

CITY GAS CONVERSIONS



150 South Terrace Wingfield SA 5013

NEW & USED UNITS - TANK TESTING

**Free Quotes for your car to be converted to gas.
3 Year Warranty.**

JUST WRECKING TOYOTA'S

ABN: 83 092 676 358

STUART



PHONE: 8359 4499

FAX: 8359 4500

Corner of South Rd & South Terrace, Wingfield. 5013

Country Estates

RLA 100925

ONE TREE HILL/HUMBUG SCRUB 7 acres \$615,000-\$645,000



HUMBUG SCRUB 4.62 acres \$495,000



GOULD CREEK/GOLDEN GROVE 15 1/2 acres \$999,000

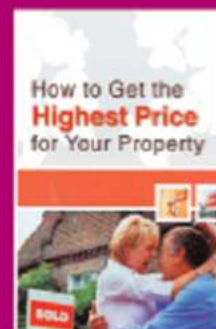


Providing the Highest Standard of Ethics & Service ~ www.countryestates.com.au

Hills & Country Specialists

Shop 1&2 Birdwood Plaza,
20 Shannon St, Birdwood SA 5234

PH 8568 5105



**A book that could make
you THOUSANDS of
dollars.
Yours FREE**

This book shows how to present your property for sale
and gives you tips on how to select, and work with, a
real estate agent.

**Whether you are an experienced property
seller or a novice, this book could make you
THOUSANDS of dollars.**

**It's yours FREE - no charge or obligation.
Contact us now and we will send you a copy.**

ONE TREE HILL 25 acres \$595,000



ONE TREE HILL \$695,000 ONE TREE HILL \$575,000



4280m² 10 acres

AUTO Frank's Blacktop Auto General Engineering, Repairs to 4- Wheel Drives, Prestige Cars EFI & All Mechanical repairs. Blacktop Rd. 8280 7255 0410 490 246	BEAUTY BEST DRESSED MOBILE TAN Winter Special \$20.00 Call Lea 0411 416 011 Conditions may apply	ELECTRICAL ROGER GIRDHAM ELECTRICAL For all your Electrical Installations & Maintenance Jobs Call Roger 0417 853 863 Or: 8280 7788	GARDENING Geoff Jacobson for all of your gardening needs * Lawn Mowing * Tree Lopping * New Lawns * Fertilising * Weed Control * Pruning * Rubbish Removal * Landscaping * Shed Cleanouts Ph: 131 546 or M: 0407 733 832	MAINTENANCE WARNERS HOME MAINTENANCE ♦ Gardening ♦ Odd Jobs ♦ Painting ♦ Pruning ♦ Gutter Cleaning ♦ Basic Home Maintenance CALL PETE: 0433 619 108
OLIVE OIL OLIVE OIL FOR SALE  \$18.00 For a 2 Litre Flagon Delivered to your door. Just \$7.50 per Litre Container RING: Debbie 0417 456 682	PEST CONTROL Best Pest Control * Spiders * Earwigs * Millipedes * Bees * Ants * Flies * Termites Call Paul on 0418 893 411	PLANTS Dealtry Native Plants Wholesale Trevilla Rd, (Off Frank Barker Rd) OPEN 1st two weekends each month 10am-4pm. Plants from \$1.00 Ph: for directions. Ph: 8280 7079 0402 010 877 Gift Vouchers Available	POSITION VACANT Seeking mature hardworking person for casual position in local nursery (approx 10 hrs per week). Some weekend work involved. Interest in gardening and good people skills required. Applications close 12th August. Nursery Assistant PO Box 128 One Tree Hill, 5114 or Email: iris@yarrabee.net Ph: 8280 7338	YOGA THE YOGA BARN Weekly Hatha Yoga Classes Mon & Wed 7 - 8.30pm Friday Morning 10 - 11.30am Bookings are essential as space is limited Call Kim 8522 3776 or 0412 192 076

One Tree Hill Junior Bakers Competition

Conditions of entry: The item of cookery to be submitted along with size and quantity will be published in the Grapevine in the month prior to the One Tree Hill market day. One entry per person. This will allow for seasonal baking such as Christmas and Easter. Entries are to be delivered to the One Tree Hill Juniors Baker's table at the market between 9am and 9.30am. Paper plates will be supplied and entry cards including entry number will be attached. Judging will commence at 9.30am. There will be 2 age categories: 1) Ages 5 to 8 years 2) Ages 9 to 13 years. There will be a 1st, 2nd and 3rd prize awarded in each category. Entries can be collected along with the prizes at 1pm. Prizes will be 1st: Blue Ribbon and \$15.00 2nd: Red Ribbon and \$10.00 3rd: Green Ribbon and \$5.00 How to enter: You will need to email (oth.grapevine@bigpond.com) or complete the entry form and mail to One Tree Hill Progress c/o the Post Office One Tree Hill SA 5114. You must include your name, age and phone number.

Your entry form must be received by the Thursday (1st September) prior to the Saturday Market on 3rd September.

September Category is Decorated Biscuits

Name	Age	Phone

Playford Council Contact Details

24 hour Emergency & Lost/found dogs

8256 0333

General Enquiries and Burning Permits (seasonal) 8256 0333 Email: playford@playford.sa.gov.au

Libraries: Elizabeth 8256 0334

Munno Para 8254 4600

When telephoning council with a request please remember to get a Customer Registration Number (CRN) to ensure registration and easy identification of your communication.

You can also phone or email your local Councillors.

Joe Federico Ph: 0417 016 164

Email : jfederico@internode.on.net

Andrew Craig Ph: 0417 016 160

Email : adcraig@ihug.com.au



Community Notice Board

Do you have an upcoming Community event or a special announcement that you would like printed on this page? Keep notices as brief as possible please.

Email or call with your details. Email: oth.grapevine@bigpond.com Phone: 8280 7095

Please note deadline date on the front cover for each edition.



It is with sadness that we write this Tribute to Brian Hatcher, who passed away on the 3rd July 2011.

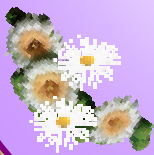
Brian was born on the 25th August 1930, the 3rd of 4 children and was brought up at Virginia.

He loved sport, and in his younger days played Tennis, Football and Cricket.

He married Barbara in 1955 at Salisbury and in 1959 they settled in Elizabeth and became a very active member of the Elizabeth Grove Methodist Church.

By that time Brian had studied to become an Accountant and was a member of the Board of Directors at the firm where he worked. They moved with their 3 children to One Tree Hill in 1975 where they became very active members of the then Methodist (now Uniting) Church, where Brian was Treasurer for many years. It was obvious how many lives he had touched by the many people attending his Funeral on the 11th July.

Condolences are passed to Barbara and the Family at this sad time.



Next Country Market

Saturday 6th August

(9am-1pm Approx) at the OTH Institute Blacktop Road OTH.

Great variety of goods available including jams, honey, jewellery, hand painted candles and lots more....

Answer for children's puzzle on page 10 is Horse.



Fun at the Trotts

Saturday, August 20th

On Saturday 20th August the Blacksmith's Inn Patron's Club are having a fun night out at Globe Derby Park.

Anyone is welcome to come along to join members in this great night out. The outing includes transport to and from Globe Derby by bus, entry fee and meal. Cost for the night is \$50 for non-members and \$35 for members. If you would like more information please call Celia on 0405 140 377.

Happy Retirement

Fred and Jean Churcher are retiring to Golden Grove to live in a Lifestyle Village. We wish them all the best with their retirement. They will be missed in the One Tree Hill area. Their daughter Samantha and her family will be living in Jean and Fred's former home, so a big welcome back to these new members of the community.



PROGRESS General Meeting - Thursday August 11th at 7.30pm.

Venue: One Tree Hill Institute, Blacktop Road, One Tree Hill.

New members are very welcome.

