

# One tree hill grapevine



This is a free community Newsletter. However a Gold Coin Donation to the Piggy Bank in General Store would be appreciated.



OCTOBER

Volume 34

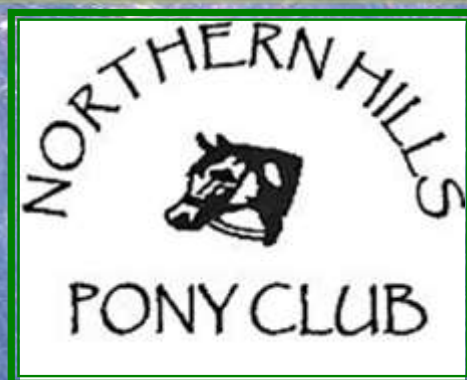
Edition 9 - 2011

Deadline for the November Edition is Friday 21st October 2011

## Sophie Competes at the Royal Adelaide Show

Sophie Neale, a rider from our local One Tree Hill "Northern Hills Pony Club" got to compete at this year's Royal Adelaide Show riding her pony "Rivington Nina" and would like to share her experience with you. It was Sophie's first Royal Show and after deciding late in the season to try and qualify Nina for the Royal Show, Sophie with her horse Nina did qualify for competition in this year's competitions.

Sophie and Nina have in the past won many ribbons, Champions and Reserve Champions and worked hard to be able to enter this year's events. Sophie's story is on page 3.



### EMERGENCY NUMBERS

Police: 131 444

Ambulance & Other Emergencies:

Country Fire Service: 000

Station:(When manned) 8280 7412

Hospital: 8182 9000

000

General Business: 8280 7055

Bushfire Info Hotline (24hr): 1300 362 361



[www.cfs.org.au](http://www.cfs.org.au)

## From the Desk



September has been an excellent month for responses from our readers about some outstanding feats by local kids as well as input from more local groups for our newsletter.

On the front page we have Sophie and Rivington Nina and how they went to compete at the Royal Show. The page opposite (3) has her version of the events that she competed in and her achievements.

We also have Katelin on the back page along with a photo of the team that competed in the Under 15's National Christian School Basketball.

Please keep up this expanding community spirit. Many comments from readers are being received and thankfully they are all good!

Most of the comments say that they are really enjoying reading more and more about local activities, interests and history. Our aim is to keep the community informed and involved and we appreciate the increasing volume of input.

Summer is coming and we have a few articles that pertain to our gardening, weed and fire control in this issue. Hopefully spending some time cleaning up dead branches, shrubs etc. will not only help prevent your house going up in flames should the unforeseen happen, it may also help to deter snakes (we hope).

It was great to hear that the Walking Group are progressing well, their update is on the back page. Until next month, the Grapevine Team.

Phone: 8280 7095 Email: [oth.grapevine@bigpond.com](mailto:oth.grapevine@bigpond.com)

### \*\*\*\*\* Letter from the Progress Association. October 2011

September has been a difficult month for a few members of the committee who have had some rather serious family illnesses to deal with of late. It is fortunate that there have not been any major tasks this month that haven't been able to be handled by other members in this time of need. It is excellent to have such a cohesive and united group of committee and general members. It is therefore very important that all communication be addressed to The Secretary, Progress Association at the publicized addresses below, not individuals at home or their workplaces. Those available will then contact the appropriate member who is able to address your issues at that time.

Our compiler has also had some serious health issues and it is amazing that this Grapevine is actually going very close to being on schedule - a big effort and very much appreciated.

The Council has been very helpful and agreed to assist with (and possibly build) a secure storage area for Progress's equipment etc. All we need to do now is finalise our proposal and present it for approval!

Enjoy the Spring weather and maybe try to squeeze in a little extra time to come along to a meeting and be part of our exciting community. Meetings are held on the 2nd Thursday of each month at the Institute at 7.30pm (any changes will be advised by a notice on the community notice board).

Ian Slater President,

Progress Association

C/O Post Office One Tree Hill, 5114

Email: [oth.progress@bigpond.com](mailto:oth.progress@bigpond.com)

Or Phone: 8280 7095



\*\*\*\*\*  
Letter To The Editor,

What is it with these selfish residents who think it's ok to keep roosters in a built-up area? (yes, that's right - the township of O.T.H. is a built up area with many houses close by).

What about some respect for us shift-workers trying to sleep during the day, not to mention the 5-30am wake up calls for everyone in earshot? The last time I checked roosters didn't lay eggs, so if you really want to breed chooks - go buy some acreage a long way from here and leave us the peace every resident deserves.

Concerned O.T.H. Resident

*Good or bad we like to hear what you think of articles, email or write to us c/o OTH Post Office and we will publish comments if we have space available.*

If you have any favourite sites we invite you to share it with our readers.

## Read the Grapevine on line



If you haven't had a chance to see the Grapevine on line please go to the site:

[www.onetreehillhall.com.au](http://www.onetreehillhall.com.au)

This is a great way to share local news with friends and family who can't

get a hard copy of the Grapevine. Happy reading.

\*\*\*\*\*  
This newsletter is published by the One Tree Hill Progress Association. Email: [oth.progress@bigpond.com](mailto:oth.progress@bigpond.com) Ph: 8280 7095

The views expressed in this newsletter are not necessarily those of the One Tree Hill Progress Association.

Its purpose is to share local news, views and events. Advertisers are responsible for the accuracy of the content of their advertisement.



# Sophie's Story

It was an early start to the day getting up at 4.30am on Saturday the 3rd September to make it to the show grounds by 5.30am. We had taken Nina down to the show grounds the day before and had her washed and plaited all ready to go for Saturday's "Show Hunter" classes. I was so nervous being my first Royal Adelaide Show, there were so many other beautiful ponies in my class. We were escorted out to the ring and were all lined up to get our numbers and to see that we had had our ponies measured before entering the event. It was compulsory to get our ponies measured because there were height restrictions for the classes.

My first class was "Novice Show Hunter Pony 12hh ne 13hh Nina measured in at 12.3 & 3/4hh. After being checked off we were allowed to ride around the ring and the judge started judging us. I was called in 3rd out of 12 competitors and the judge called in 8 riders to do a workout. We lined up and took turns to do a ridden workout. Nina was such a good girl and came third in her class. Mum and I were so excited that I had won a ribbon at the "Royal".

I rode Nina back to her stable for a rest before her next class which wasn't until 2.30pm. At 1.45pm I led Nina from her stable and saddled her up for her 2nd class. I took her for a quick warm up in the warm up arena and then again, we were escorted out of the ring. There were 21 riders in this class which was "Childs Show Hunter Pony 12hh ne 14hh". The judge lined us all up and split the class into two groups because there were so many of us! We were the first group to ride on the circle while the other half of the class waited their turn. I was called in 3rd. The judge called in another 2 horses making a total of 5. We then waited while the other group went onto the ring, she again picked 5 riders and then the 10 of us went on the ring to be judged. I was called in 5th. After our work outs I was moved up to 4th place and we were all presented with our ribbons. I was over the moon that Nina had done so well from such a huge class of 21 ponies.

Dad arrived with the float at 5.30pm so that we could take Nina home for a well deserved rest.

It had been such a long day for all of us. We had many friends and family that came and congratulated us on the day and it made it even more special.

*Last month we had an article about Kaye and Tony Ellis's grandson Jake who competed in SAPSASA under 12 football. Sophie is Kaye and Tony's granddaughter so they are certainly a talented family. Sophie's parents Janine (nee Ellis) and Dad Steve must be so proud of their daughter Sophie's achievements at the Northern Hills Pony Club.*

Sophie is again competing at the Nationals in Sydney later in the year, we wish her all the best for competition.

If you would like further information about the Northern Hills Pony Club see below.

*If you have a story to share with One Tree Hill please email us at: [oth.grapevine@bigpond.com](mailto:oth.grapevine@bigpond.com) or phone 8280 7095. (The Grapevine Team)*

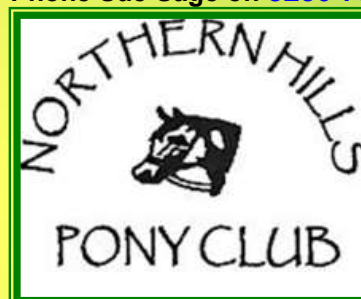


## Northern Hills Pony Club

Do you have a Horse or Pony and would like to become part of a family friendly riding club?

- ◆ Friendly & Encouraging instruction to all members
- ◆ Everyone welcome & all breeds of horses
- ◆ Events & social outings for all ages & experience
- ◆ Full encouragement, support & training in all aspects of equine competition
- ◆ Regular Pony Club updates
- ◆ Rallies every 2nd and 4th Sunday
- ◆ Adult only rallies held 1st Sunday of the month
- ◆ Specialist attention for all riders from led to adult
- ◆ A professional Committee and Much More!

All enquiries: Email: [northernhills@hotmail.com](mailto:northernhills@hotmail.com)  
or Phone Sue Sage on 8280 7560



Location: Corner of One Tree Hill Rd and  
Gawler-One Tree Hill Rd, ONE TREE HILL  
To find the club on the web go to  
<http://maps.google.com.au/>





## ONE TREE HILL GRAPEVINE

### CFS REPORT OCTOBER 2011

Well the last month has certainly shown the diversity of types of incidents the CFS can be asked to assist with.



On the 6th Sept OTH CFS responded to a car accident on Williams Rd near the ETSA Sub Station on Black Top Rd. A vehicle had been travelling up Williams Rd and collided with a 11,000Kv power pole. The pole was completely destroyed and on arrival was found lying across the road. Somehow the driver was uninjured; the vehicle was written off and the road was closed for many hours until repairs were completed.

On Saturday 10th Sept at around midday a request for assistance was received from the SA Ambulance Service to help extract an injured person from the Para Wirra National Park.

The person had fallen and injured an ankle, the difficult location required the patient to be removed by stretcher to a location, where the Rescue Helicopter was able to winch the patient out.

On the 11th Sept a car was travelling South on the One Tree Hill Rd near Melville Rd, Sampson Flat, lost control and crossed over the road and crashed into a tree. The driver was taken to hospital with back injuries, however was very lucky not to sustain more extensive injuries considering the speed and the size of the tree.

The vehicle was a write off. The road was closed for some time.

The 16th Sept proved to be an eventful day with a car fire in the early hours of the morning on Black Top Rd and later in the evening a scrub fire deliberately lit in Forestry Land on Bassnet Rd, Humbug Scrub. The intensity of the fire was surprising considering the time of the year.

#### SPRING HAS ARRIVED AND SUMMER IS ON THE WAY

A: Slash or mow long grass and remove cut material within 20metres of the home.

B: Remove weeds around sheds and fences.

C: Cut back trees overhanging the roof.

D: Remove fallen branched and other debris.

E: Check and service all mechanical equipment including grass cutters, water pumps, sprinklers, fire hoses and fire extinguishers.

F: Remove leaves from gutters.

G: Also spraying fence lines helps to reduce damage to the wooden poles and galvanizing when a fire comes through a property.

For general information please contact OTH Duty Phone of 8280 7055

You can also visit the CFS website at [www.cfs.org.au](http://www.cfs.org.au) or Phone 1300 362 361

**C**ouncillor's Report by Joe Federico  
As a result of Council's Efficiency and Effectiveness survey Council has resolved to effect a 9% savings across the board in order to maintain sustainability and provide an effective and efficient council. This does not mean that rate increases will be less than presented in the Council Plan it simply means that council will better or fully utilise resources to deliver services and get better value for its rates and funding dollar. This should result in a leaner council (not less employees but a tighter rein on future growth proportional to city growth) better services and city presentation ???

Council has completed its random customer satisfaction survey and will present it's summary findings in the September Edition of its North is Up magazine. Overall customer satisfaction is consistent with past years around the 70% satisfaction rating with the majority of respondents satisfied with Playford as a place of choice to live in. The survey is detailed in its findings and demonstrates that garbage collection, parks and gardens and roads and libraries are the major issues ratepayers are concerned with. To view the survey in its entirety you can log on to [www.playford.sa.gov.au/satisfaction](http://www.playford.sa.gov.au/satisfaction). A question was asked in the survey in relation to respondents knowing who their elected member was, Ward 3 had the greatest knowledge but more than 70% did not know who their member was, interesting reading??

Residents of One Tree Hill and surrounding areas need not be concerned but should be aware that verge mowing will be delayed this year in an effort to identify map and treat Coolatai grass. The grass needs to flower to be easily identified and treated as an invasive species threatening our farming community. The NRM in conjunction with council are working to control and eradicate this specie of grass from our community and ask for your co-operation in this matter, so please be aware that verge mowing will occur later in November.

For those who catch the train at the Elizabeth railway station please be aware that the station and parking facilities will no longer be available until further notice and that buses will now ferry passengers to Mawson Lakes to catch the train to Adelaide. In order to assist commuters with parking their cars at a convenient, parking fine free location I have, in conjunction with the Elizabeth Shopping Centre, Council and DETI, been able to have an agreement reached to allow commuters to park their cars in the car park behind the Police Station without fear of incurring a parking fine while still being a comfortable walk to the bus depot.

Please remember that I am available in person at the Country Market held on the 1st Saturday of each month to listen to and advise on your concerns. I am near the Russian food stall trying to sell my olive oil in between talking with Ratepayers and judging competitions. Congratulations to all of the entrants in the One Tree Hill Progress Association Junior Baker competition, it's a great community activity involving the younger members of our community.

If you have any concerns or issues with or about our City, please in the first instance phone: 8256 0333 or send your Emails to [playford@playford.sa.gov.au](mailto:playford@playford.sa.gov.au) and cc to [crjfederico@playford.sa.gov.au](mailto:crjfederico@playford.sa.gov.au) this will ensure that council sees your concerns and then forward your emails to me. If you are uncomfortable with council viewing your comments then please email me at [jfederico@internode.on.net](mailto:jfederico@internode.on.net) if subsequent to that approach you do not receive a timely or satisfactory result please feel free to contact me personally. However I cannot guarantee that I will be able to get any better results but will at least have council reassess their position and provide an explanation as to there resolve and in some cases if not most, reach a compromise that is acceptable to all parties concerned.  
Cr Joe Federico Ph: 0417 016 164

4 Full council details on page 19.



# CITY GAS CONVERSIONS



150 South Terrace Wingfield SA 5013

**NEW & USED UNITS - TANK TESTING**

Free Quotes for your car to be converted to gas.  
3 Year Warranty.



No Job  
Too Big or  
Too Small

**Professional Tree & Stump Service**

**Call Brad for FREE QUOTES**

**on: 8365 8000**

Don't Forget to ask for our  
Special Grapevine Price....

# Air Conditioning & Complete Electrical



**Servicing the One Tree Hill Area**

Deal Direct With Local Tradespeople  
Phone for a FREE Quote Today

**Air Conditioning & Electrical Installations**  
**'We can Supply & Install Wall Split Systems**  
**Or Ducted Split System Air Conditioners'**  
**All Brands Available**

**Call Now & Have Your Unit Installed Before Summer**  
**Phone: Peter, Ryan or Leon Moyle**

**0407 463 310 A.H. 8280 7442**

Email: [completesplits@gmail.com](mailto:completesplits@gmail.com)

PGE139465 L051080



**"Drive Thru Now Open**  
**Ok for all Trailers"**



**Come in and say hello**  
**to Charlie!**

**ONE TREE HILL FODDER & RURAL SUPPLIES**

## Springtime Needs

- \* Small Motor Repairs
- \* Snipper Cord and Spark Plugs
- \* Wire Mesh, Hex Mesh, Sheep and Cattle wire Whites and Waratah
- \* Star droppers all sizes in black and galvanised
- \* Gallagher Electric Fence Products
- \* Maxiplus Tanks
- \* Treated Pine Posts, CCA and Creosote
- \* Sheep Troughs Waters and Feeders
- \* Almost all irrigation needs
- \* Hose Fittings and Micro Irrigation
- \* Clearing some Horse Feeds at low prices, Vitamite, Omega, Hygain, some Coprice

**Ph: 8280 7680**

**Shop 4/9 Blacktop Road, One Tree Hill**  
**Remember that a \$50**  
**order gets FREE delivery!**

ABN: 84 533 741 944





DISTRIBUTION **360** Pty Ltd

*Waste to Resources*

# Rubbish Bins and Mini Skips

from 2m<sup>3</sup> to 60m<sup>3</sup>

Daniel 0414 280 891  
Ken 0488 360 360



**D3**



**CATTELL  
CREATIONS**

*Specialists in*

**Stained Glass**

**Leadlight**

**Splash Backs**

**and NOW assorted**

**Furniture at very  
reasonable prices!**



**Lot 12 Black Top**

**Road One Tree Hill**

**Call Dave**

**8280 7800**



## Birdwood Pump & Irrigation Services

**Now Servicing the One Tree Hill area**

**We Specialize in**

**Agricultural Bores, Pumps & Irrigation**

**All Makes & Models Available**

**Call David  
0438 685 089**



**Agents for Grundfos Sales**



## OUR VISION

*"People of faith sharing God's love as we worship and serve in the community"*

We really look forward to seeing you on Sunday mornings when we have our 10am Service. We have a different Speaker each week, which makes it very interesting as there is something for everyone. The atmosphere is very friendly and welcoming, and after the Service we enjoy a cup of tea or coffee and cordial for the children. The children (as well as the adults) also enjoy the cakes and biscuits. There is no shortage of conversation there.

ALL YOUNG CHILDREN ARE WELCOME and after staying in for the beginning of the Service, they then have their own Special Time of learning and fun, with good Leaders.

SMYG - SUNDAY MORNING YOUTH GROUP. The young people in this Group meet at 10am with their Leader, in their own room, and then join the others for a cup of tea/coffee. (As we experience warmer weather, the beautiful Garden Area will be a gathering place for this Group). There are various Groups to be involved with, such as THE DRAMA GROUP, THE MUSIC GROUP, THE FELLOWSHIP GROUP, and THE CRAFT GROUP.

### OPERATION CHRISTMAS CHILD

(Samaritans Purse) The final collection and the Blessing of the Boxes will be at the Church on Sunday 2nd October at the 10am Service.

### FELLOWSHIP NEWS.

Meetings are usually held on the 4th Wednesday of each month in the Church, but IN NOVEMBER there will be something different as there will be TWO OUTINGS - the first one on the 19th and the second on the 26th October. On the second outing, Members will be attending a Uniting Church in Australia Fellowship Day at The Corner Church, Warradale.

Enquiries about any of the above can be addressed to Sybil Winsor on 8280 7038



**Our next fire season's hazards  
have already begun to surface.**

Are you bushfire ready? Prepare. Act. Survive. For more information visit [www.cfs.sa.gov.au](http://www.cfs.sa.gov.au)



## **Carpenter/Maintenance**

**Call for all of your carpentry  
and maintenance needs.**

-  **Pergolas**
-  **Carports**
-  **Decking**
-  **Verandahs**
-  **Door/Window Frames**
-  **Renovations**
-  **Extensions**
-  **Facia Replacement/Repairs**
-  **General Maintenance**



**Call for a FREE Quote today!**

**Ph: 0439 680 177**

**or Email:**

**[qualitymodernimp@yahoo.com.au](mailto:qualitymodernimp@yahoo.com.au)**



**Black Top Road, One Tree Hill**

### Upcoming Events

**Friday 28th October**

**8.00pm 'til late**

**HALLOWEEN PARTY**

**with Frank and the Beanz -**

**Prizes for best dressed**

**Creepy Drink Specials!**

**Saturday 29th October**

**Comedy Night**

**With Steve Copley, Big Al and featuring**

**Rich Naberhood. Hosted by Gordy Munn**

**\$50 per ticket - 6.30pm**

**Includes 3 course meal and side splitting  
comedy show. Book early - Limited Seats**

### Don't forget:

**Tuesday Schnitzels from \$9.90**

**Thursday T-Bone Steak \$9.90**

**Available all day**

**To Book a Table Please**

**Ph: 8280 7666**



## Crime Report – ONE TREE HILL Rural Watch – Offences reported between 16th August and 19th September 2011

<b>6th August</b>	Residential Serious Criminal Trespass	Williams Road, GOULD CREEK
	Entry to premises by jemmied front door. Electrical items stolen.	
<b>Between 14th &amp; 18th August</b>	Theft of stock trailer	Kaiser Drive, ONE TREE HILL
	Trailer stolen from property.	
<b>29th August</b>	Theft of Motor Vehicle and Trailer	Shillabeer Road, SAMPSON FLAT
	Unknown offender has stolen 4x4 ute with work trailer attached. Ute recovered 30th August at Eliz Sth. Trailer not recovered.	
<b>Overnight 8th September</b>	Non Residential Serious Criminal Trespass	Black Top Road, ONE TREE HILL
	Front window/door of business premises smashed. Unknown what was stolen.	
<b>Overnight 9th-10th Sept</b>	Residential Serious Criminal Trespass	Hughes Court, YATTALUNGA
	Entry to premises via forcing door. Cash stolen.	
<b>Between 11th &amp; 12th Sept</b>	Theft of stock	Gawler-One Tree Hill Road, ONE TREE HILL
	20 Sheep stolen from paddock.	
<b>Overnight 13th September</b>	Theft from motor vehicle	Kentish Road, ONE TREE HILL
	Property and cash stolen from motor vehicle.	
<b>19th September</b>	Residential Serious Criminal Trespass	Kentish Road, ONE TREE HILL
	Entry to premises by forcing door. Electrical items stolen.	
<b>Between 13th &amp; 18th Sept</b>	Non Residential Serious Criminal Trespass	Kentish Road, BIBARINGA
	Entry to shed and stolen motorbike, tools, pumps etc.	



Currently the Elizabeth Local Service Area is experiencing an increase in rural properties being targeted by offenders. Housebreaks and theft of property from sheds (in particular motorbikes) are at the top of the list. This trend is not only in the One Tree Hill area but also in the Adelaide Plains (Virginia, Two Wells). All residents are asked to ensure your sheds are locked and secured. If you have a front gate - please lock the gate. The inconvenience of getting out of the car a couple of times a day to unlock the gate is small in comparison to the issues of being a victim of crime and the follow up investigation. Ensure you take note of any vehicles which are not usually in the area. If someone attends your property and asks for directions etc - make sure you write down the registration number of the vehicle, the time, date and any description of the person. Keep this in a safe place - it may be the vital clue the police are looking for. Remember it is not just your immediate neighbourhood - One Tree Hill is a huge area and if something is happening at Uleybury then the offenders would be prepared to drive another 5 minutes and target Gould Creek. Police review all crimes daily and will notice a trend like what is happening now (rural properties being targeted) - your information could assist in apprehending the offenders and preventing you or your neighbours from being a victim of crime.

In the last Grapevine I made mention of a resident phoning police in relation to a stolen vehicle and occupants on Shillabeer Road, Sampson Flat. This information aided police in apprehending 2 persons for Illegal Use of the vehicle which was stolen from Noarlunga. On the 28th August a ute and trailer were stolen from a premises on Shillabeer Road, Sampson Flat. Police received information the following day from 2 residents on Shillabeer Road in relation to seeing the vehicle being driven along the road towards the town at about 10pm (28/08). Police commenced enquiries and received information and as a result subsequently located the ute at an Elizabeth South address at about 11.30am. During this investigation police observed a male adult was wanted on an outstanding parole warrant and listed on the State's Top 10 Most Wanted List. This male was subsequently arrested and is a person of interest in relation to the stolen ute - police are awaiting results of DNA testing before further investigation.

This is another excellent result from the community showing that being observant and getting involved by simply making a phone call achieves a great outcome for all.

In July 2011 a farm shed was jemmied open at Medlow Road, Uleybury.. A DNA hit for a male adult from ELIZABETH DOWNS was received by police who are attempting to locate and charge the male with offenses.

As always if you have any information to assist with any crime issues in the area please call Police Communications on 131 444.



As you slide down the banister of life, may the splinters never point the wrong way!  
The only time the world beats a path to your door is if you're in the bathroom!  
My mind works like lightening .... One brilliant flash and it is gone!



## Rob Green Security

**Servicing, Installation, Monitoring  
Your Local Technician**

**Ph: 0419 398 346**



## Sharkatax Bookkeeping Services

MYOB, Quickbooks & Cashflow Manager  
BAS Preparation & Lodgment  
Tax Orientated Bookkeeping—Shoeboxes Welcome  
General Bookkeeping, Invoicing, NIA Certified BAS  
Provider ATO s251L Compliant  
Be Ready For Your Tax Agent

**Ph: Sharka on 8255 6253 or 0400 695 090**

**or email: [sharkatax@bigpond.com](mailto:sharkatax@bigpond.com)**





# ONE TREE HILL REAL ESTATE



Fay Hull  
0407 962 884

Top selling agent in the area

*We aren't 'Slick', but we are genuine, honest, hard-working agents who achieve record outcomes*



Shop 3 Blacktop Road, SA 5114  
Phone: 8280 7775 RLA: 201543



Liz Summersides  
0408 840 235

**FREE APPRAISALS by your area expert**

**We have an extensive data base of genuine buyers looking for properties in the Northern Hills!!**

**PROPEST** 1800 24 22 21  
management services

**We service any pest No problem!**

PO Box 684 St Agnas

Residing Humbug Scrub

- \* Termite/White Ant Removal
- \* Termite Baiting Systems
- \* General Pest Control
- \* European Wasp & Bee Removal
- \* Existing and Pre Purchase Property Inspections
- \* Weed Eradication
- \* Free Site Assessment

www.propestcontrol.com.au

AS/NZS ISO 9001:2000  
QUALITY CERTIFIED COMPANY

**Just NISSmaz**

NEW, USED, RECO PARTS  
Cars, Commercial & 4WD's

**Ph: (08) 83591444**  
nissmaz@neonet.com.au

CAPRICORN  
SALES & SERVICE

**ENJO**®

**CLEAN THE WORLD**

For product enquiries, demonstrations  
and all your enjo needs contact...

**Beni Hite**  
Ph: 8280 7815 or Mob: 0403 763 826

The  
**Northern Foot  
Clinic**

Heel Pain, Sports Medicine, Aching Feet, Children's Feet  
Ingrown Toenails, Plantar Warts, Orthotic therapy, Mobilisation

*Pain relief today and prevention for your future*

- \* 109 Haydown Rd, Elizabeth Vale (onsite parking)
- \* 16 Adelaide Road, Gawler (onsite parking)

DVA, Hicaps. Medicare (GP approved only)

**8287 3888**



# Kids Page

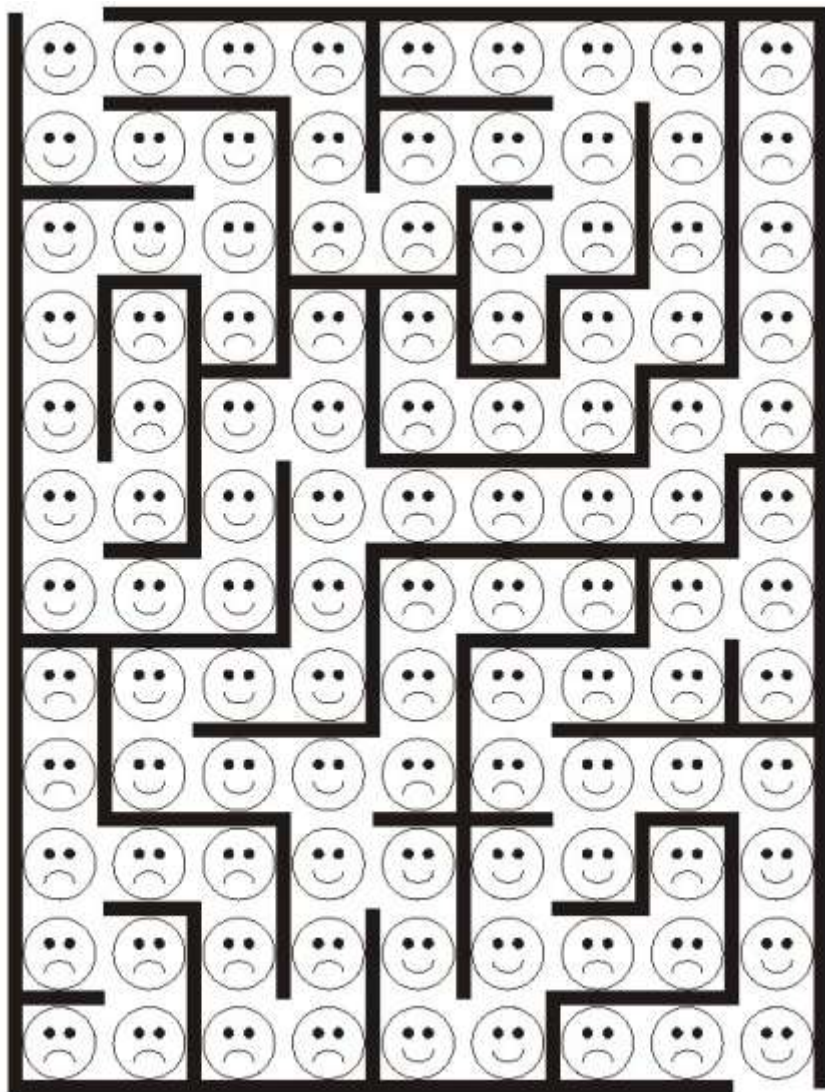
Welcome to the October edition of your very own kids page. I hope that you are still enjoying the page dedicated to kids. I guess most of you will be on school holidays when you read this so I hope that you are enjoying yourselves and making the most of our lovely Spring weather. It won't be long before it will be too hot to play outside much, this year seems to have flown by. Before we know it Christmas will be upon us!

**If you have a moment to spare don't forget to drop me a line with any suggestions about this page, I am open to any new ideas, just email the Grapevine at: [oth.grapevine@bigpond.com](mailto:oth.grapevine@bigpond.com) or drop me a line c/o OTH Post Office. Until next month, Auntie Bev.**



Using the smiley faces find your way home.

START



FINISH

Q: Why did the Romans build straight roads?

**A: So their soldiers didn't go around the bend!**



**Q: How come you aren't doing very well in history?**

A: Because the teacher keeps asking about things that happened before I was born!

Q: What is square and green?

A: A lemon in disguise!

**Q: What's the fastest vegetable?**

A: A runner bean!

Q: What do you call two rows of vegetables?

A: A dual cabbage way!

Q: Why did the spider go on the internet?

Q: Why did the scarecrow win a medal?

A: Because he was outstanding in his field!

**Q: What was Tarzan's last words?**

A: Who greased the vines!

Why did the dog get under the tree?

**A: Because he didn't want to be a hot dog!**

There was a cowboy who rode in on Friday and stayed in a hotel for one night and left on Friday, how did he do it?

A: His horse was called Friday!

Q: What goes through towns, up & over hills but doesn't move? **A: A road.**

Q: How do you make a bandstand?

A: Take away their chairs!

Q: What breaks when you say it?

A: Silence!

Q: Why did the girl take a ladder to school?

A: Because she was going to high school!

Q: What do you call two banana peels?

A: A pair of slippers.

**Q: What has a hundred legs but can't walk?**

A: Fifty pairs of trousers.

Q: What is always on its way but never arrives?

A: Tomorrow!

Q: What can you serve but not eat?

A: A tennis ball!

Q: What did the light say when it was turned off?

**A: I'm delighted!**

Q: What is a volcano?

A: A mountain with hiccups!

Q: Why did the teacher wear sunglasses?

A: Because his class was so bright!

Did you hear about the crossed eyed teacher?

**He couldn't control his pupils!**





The global financial crisis,  
terrorism, global warming -  
do these things concern you?

You and your family are invited to come  
along to a free seminar entitled

**'The World in crisis - the Bible  
offers the solution'**

6pm Sunday evening of 9th  
October

Other subjects under discussion are

**'What is the Holy Spirit/  
The Bible is God's Book'**

6pm Sunday evening 30th October

In the One Tree Hill Institute Hall,  
Black Top Road, One Tree Hill

Check out our website:

[www.othchristadelphians.org](http://www.othchristadelphians.org)

to find out more about us and our activities

# SEPTIC TANKS PUMPED OUT

For good old fashioned service call

## 8283 3656

Or Trevor on 0417 000 365



## SEPTIC PUMPING SERVICES

Email: [septic1@bigpond.com](mailto:septic1@bigpond.com)

Web: [www.septicpumpingservices.com.au](http://www.septicpumpingservices.com.au)

### **Methods of Weed Control** Many thanks to the Fodder Store for this very useful submission.

**W**hat is a weed? There are many thoughts on what a weed actually is but I believe that generally it is a plant that is growing where the land holder doesn't want it to grow. Some of these plants are native but many have been introduced to Australia and often, without intention.

Weeds are usually strong plants that adapt well to their adopted environment and grow and reproduce aggressively. They often rob the original native plants or in the case of a farm, the intended crop, of room to grow, nutrients from the soil and health giving daylight.

There are many methods available to control weeds and spraying with chemicals is just one of them.

#### Mechanical Control

Mechanical Control is usually the first option to consider. This is carried out in various forms such as slashing, cutting, digging, pulling, ploughing and even grazing stock (where it is suitable)

#### Chemical Control

Chemical Control is in three main forms:

- \* Spraying from a spray bottle, back packs, and larger tanks with pumping equipment. Do not apply sprays on windy days as you will not have control of any spray drift.
  - \* Cut & Paint, is often used on larger plants by cutting the stem close to the ground and then immediately applying a suitable chemical by brush or sponge.
  - \* Drill & Stem Injection is carried out on larger plants by drilling into the stem and injecting a suitable chemical. This method is handy if you want to kill the plant but not necessarily remove it immediately perhaps because it serves other functions (perhaps soil stabilization), until a new plant can be introduced.
- As with all chemicals, read the instructions carefully, use as directed, wear appropriate protective clothing and equipment.

Check for local legislation and regulations. Ensure that chemicals are labeled and stored appropriately. Keep a copy of the Material Safety Data Sheets for each chemical on hand for quick reference.

You are responsible to contain the use of chemicals within your own property and the chemicals must not be able to reach any watercourse.

#### Biological Control

If you introduce a particular species to your weed infestation in order to eradicate it you are using a form of Biological Control. The Leaf Feeding Beetle is one such species that has been introduced in the past. *Looking at the list of introduced pests that we now have in Australia by well meaning persons in bygone days I would think long and hard before going down this road.*

#### Things to Consider

You will need to assess the size and type of weed infestation that you want to kill off as part of your decision making process when considering the control or combination of controls to be implemented. You also need to consider the environment, your safety and that of others, the type of terrain, the amount of area occupied, neighbouring properties, other wanted plants that are already growing amongst the weeds and local government legislation and regulations. You also need to consider any long-term effects of any control methods that you may use.

Once you have removed the weed you may wish to stabilize the soil to prevent erosion until you are ready to crop or plant the land for its intended purpose. You may want to think about planting a grass such as a sterile rye so that you can better control the site until you are ready for the next step.

If neighbouring properties have a similar weed problem that they also want removed, it makes sense to work together with a combined approach to help prevent further re-infestation. The local council is usually a good resource of information on local weeds and weed control.



**Bearded Irises  
Waterlilies  
Pond Plants**

Available from  
**Yarrabee Garden  
& Iris**

Nursery open most  
weekends during October  
and November, and other  
times by arrangement

Phone 8280 7338  
or visit our website  
[www.yarrabee.net](http://www.yarrabee.net)  
for details

#### GOOD THINGS ABOUT GROWING OLD

If you have never smoked, you can start now and it won't have time to hurt your health!

People no longer view you as a hypochondriac!

Your supply of brain cells is down to a manageable size!

Your eyes won't get much worse!

Adult nappies are actually quite convenient!

Things you buy now won't wear out!

In a hostage situation, you are likely to be released first!

Your secrets are safe with your friends because they can't remember them either!

People call at 9.00pm and ask "Did I wake you?"

You can eat dinner at 4.00pm!

You have a party and the neighbours don't realize it!

You quit holding your stomach in whoever walks in the room

Ah, being young is beautiful, but being old is comfortable!

Aging is such a nice change from being young!

#### WINDOW OF OPPORTUNITY FOR ACTION TO CONTROL NEW WEED INCURSION

Chilean Needle Grass (*Nassella neesiana*) season is almost upon us and now is the time for landholders to gear up for its control.

Chilean Needlegrass (CNG) is a tussock grass which can be identified by its purple drooping flower/seed heads and long, sharp seeds. It can be confused with native spear grasses which have similar seeds and some other grasses with drooping heads. The extra asexual 'seeds' which can be found in the stem and base of CNG are a way to distinguish it.

It can spread rapidly, infesting productive land and native bush in its wake. In one season a single plant can produce 28,000 seeds.

CNG has been a scourge to farmers in parts of the eastern states. High in fibre and low in protein, it can make once-productive pasture land worthless. Its hard sharp seeds readily contaminate fleece and injure stock. Hay containing the seed is also hazardous to animals.

First identified near One Tree Hill in December 2009, the local outbreak is confined to a few kilometres around the township and could still be eradicated.

'To be most effective landholders should act while the plants are flowering and readily identifiable' says Tracey Hardwicke of the Adelaide and Mount Lofty Ranges Natural Resource Management (NRM) Board. Isolated plants or small populations can be controlled by removing and bagging the seed heads with the plants being sprayed or grubbed out and burning the removed material.

Larger outbreaks need a long-term management strategy which includes prevention of contaminated hay and animals moving off the property. NRM staff may be able to assist with developing property plans.

**SPRINT  
AUTO PARTS** **PROUDLY  
SUPPORTING  
SA!**

EVERY Car, EVERY Part, EVERY Day.

**SPRINT has all your parts & accessory needs!**

**Fluids! Hard Parts! Car Care!**

**With 35 stores, we're always  
just around the corner.**

**PROUDLY SA OWNED & OPERATED SINCE 1984**

**35 STORES - OPEN 7 DAYS\***

**GET DISCOUNTS ON PARTS & ACCESSORIES!**

**BECOME A SPRINT AUTO PARTS VIP CLUB MEMBER**

For your nearest store, go to [www.sprintautoparts.com.au](http://www.sprintautoparts.com.au)

Achancego fb t EVERY Car, EVERY Part, EVERY Day. For your nearest store, go to [www.sprintautoparts.com.au](http://www.sprintautoparts.com.au) **SPRINT  
AUTO PARTS**

Slashing also spreads the seed so ensuring machinery hygiene is practiced is vital in reducing the risk of further spread across a property and more importantly off a property.

The NRM Board and the City of Playford have joined forces with the community to help eradicate this weed. The One Tree Hill Chilean Needle Grass Community Group has been formed to promote awareness of the problem and control strategies. The extent of CNG is being mapped annually and roadside outbreaks controlled.

'The presence of Chilean Needle Grass means Council cannot mow in late spring until roadside outbreaks have been identified and treated' says Leonie Scriven, Group Manager of Parks and Open Space at the City of Playford. 'This is usually by early December, and residents can be assured that mowing will occur just as soon as possible'.

Information on identification and control strategies for Chilean Needle Grass can be obtained by accessing the Weeds of National Significance factsheet at [www.weeds.org.au/WoNS/Chileanneedlegrass/](http://www.weeds.org.au/WoNS/Chileanneedlegrass/).

For further advice contact the NRM Board on **8523 7700**





# Raine & Horne®



Raine & Horne North East  
1289 North East Road Tea Tree Gully SA 5091  
RLA 182438 ph : 83952233

**FREE APPRAISALS**  
By Area Specialist

Thinking of SELLING!  
Thinking of BUYING!  
it's as EASY as 1,2,3  
Call David & Jamie



**0417 847 810**  
davidk@rhsa.com.au

**0414 267 547**  
jamien@rhsa.com.au

SUMMER IS COMING, BEAT THE RUSH, WE HAVE BUYERS WANTING TO LIVE IN ONE TREE HILL AND SURROUNDING AREAS. CALL TODAY!

## Steven O'Connor

**Naturopath, using Herbal and Nutritional Remedial Massage Therapist**

**Dip App Sc(Ag), Adv Dip W Herb Med, Adv Dip Nut Med, Adv Dip Nat, Dip R Massage**  
**For chronic pain and alternative medicine using herbs and nutritional medicine**

**Health Rebates Apply**

**Kilberin Cornishmans Hill Road**

**One Tree Hill S.A 5114**

**82807003 0407820422**



**The Engine Bay**



For all your Automotive Repairs  
Call out Services  
Available for Tractors and  
Earth Moving Machinery  
Servicing the  
One Tree Hill area

**8283 0211**

**Auto Repairs For Farm Machinery**

**49 Saints Rd. Salisbury Plain**

## Advertising Rates for 2011

Colour ads:	1/8th Page \$30.00	Quarter Page \$60.00	Half Page \$150	Full Page \$350
Black/White:	1/8th Page \$20.00	Quarter Page \$40.00	Half Page \$100	Full Page \$250

Classified ads: Just \$8.00—Great for promoting Business or Garage Sales or items for sale.

Please ensure that all adcopy is sent to the Grapevine by the deadline (on front cover) at  
oth.grapevine@bigpond.com or phone: 8280 7095



## "ADELAIDE NORTHERN VETERINARY GROUP"

Drs. ALAN & ROBERT IRVING, B's.V.Sc

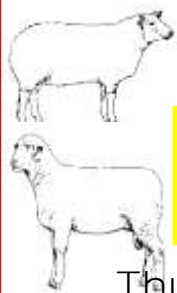
Modbury—Salisbury—Elizabeth East—Elizabeth Park

Ph: 8280 7353 or M:0419 806 213



[www.adelaidenorthernvet.com.au](http://www.adelaidenorthernvet.com.au)

Email: [alanirving@internode.on.net](mailto:alanirving@internode.on.net)



### BERNALTA

Poll Dorset and Texel

**ANNUAL ON PROPERTY  
OPEN SELECTION DAY**

Thursday 6th October 2011  
10.00am till

FOR SALE: 35 Poll Dorset Rams, 12  
pure Texel rams Accredited Brucellosis  
free - Accredited OJD MN3V

QUALITY STOCK AT A  
REASONABLE PRICE

Brian and Lorraine Hughes  
Lot D Harvey Road, Sampson  
Flat, One Tree Hill.

Phone: (08) 8280 7304  
or Mob: 0427 910801

Email:

[bernaltastud@bigpond.com](mailto:bernaltastud@bigpond.com)

Dorset flock number 3287,  
Texel flock number 106

## WOMBAT'S

- \* Bobcat & Tipper Service
- \* Excavator 4.5 tons
- \* Pig trailer & tipper (24tons)
- \* Concrete/Pavers prep & removal
- \* Post hole boring (350m-450m)
- \* Trench hole digging to (1200mm)
- \* Shed site prep
- \* Rainwater tanks prep
- \* Driveways
- \* Stock burial
- \* Civil work
- \* Retaining wall prep



**Phone: John Mancone**

**0417 456 656**

**Uleybury**



Picture above is the One Tree Hill General Store.  
We believe that the photo was taken in  
1946 or 1947.

At the time Len and Ray Hicks owned the store.  
The truck was used for the mail run. Mail was  
picked up from the Smithfield depot.

*It must have been a long day for the postie  
in those days!*

*If you have any old, interesting photos and want to  
share them with readers please email:*

[oth.grapevine@bigpond.com](mailto:oth.grapevine@bigpond.com)

or Phone: **8280 7095**



Wedding  
Engagement  
Naming Day



Special Birthdays  
including Children's  
Reunions  
Meetings or Other

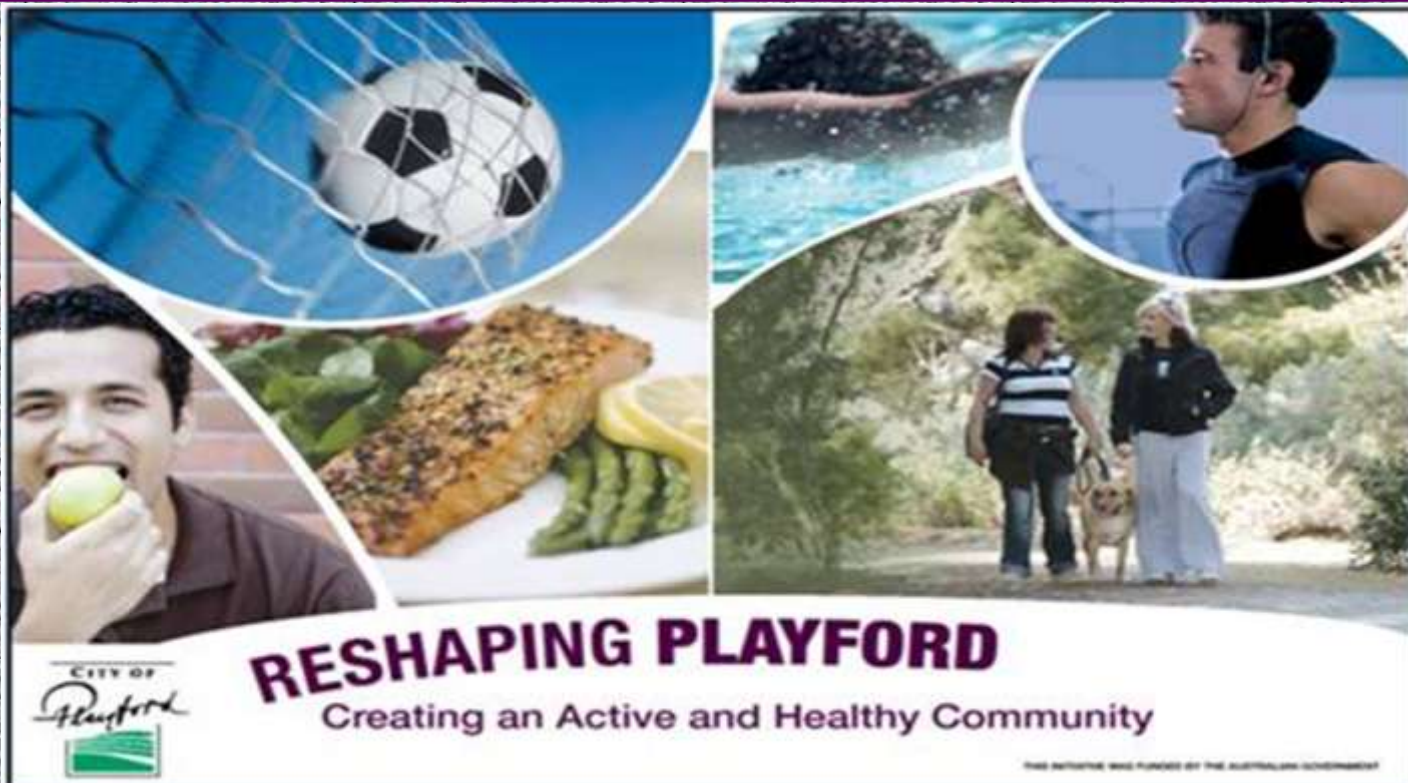


Now on the web: [onetreehillhall.com.au](http://onetreehillhall.com.au)

One Tree Hill Institute  
Hall for Hire

Call 0459 105 045 or 8280 0000  
Email: [oth.hall@bigpond.com](mailto:oth.hall@bigpond.com)





**What is Reshaping Playford?** Reshaping Playford is a healthy lifestyle initiative that has been introduced to the City of Playford catering for people aged 18 and over. It has been funded through the Australian Government's Healthy Communities Initiative which aims to create a supportive community to encourage healthy living and to tackle the ongoing issues of overweight, obesity and chronic disease. Reshaping Playford intends to maximize the number of individuals engaged in physical activity and dietary education programs. To find out more about the initiative please visit the "Healthy Living" section on the City of Playford website at [www.playford.sa.gov.au](http://www.playford.sa.gov.au) or contact

Jenny Campbell, Healthy Communities Coordinator on 8256 0198 or Email: [jcampbell@playford.sa.gov.au](mailto:jcampbell@playford.sa.gov.au) or Jacki Evans, Healthy Communities Dietitian/Project Officer on 8256 0154 or Email: [jevans@playford.sa.gov.au](mailto:jevans@playford.sa.gov.au)



## GAWLER MEDICAL CLINIC

Dr. Barry Darlington

Dr. John Salagaras

Accepting new patients, usually on the day.  
Mix of male and female Doctors.

Dr. Marshall, Dr. Tiong, Dr. Smit, Dr. Ehsan,  
Dr. Howood, Dr. Romina and Dr. Kaur.

- ♦ **Men's Health**
- ♦ **Women's Health**
- ♦ **Children's Health including immunization and Health Checks**
- ♦ Family Planning including Mirena insertion
- ♦ Allergy Testing and Desensitisation
- ♦ Mental Health
- ♦ Skin Cancer Checks

Mon-Fri 8am-5.30pm Thurs 8am-7pm Sat  
9.00am-11.30am.

2B Murray Street (Opposite Cinema)  
Gawler.

PH: 8522 1844



Accredited  
General Practice



## One Tree Hill Soccer Club Trivia Night

The OTH Soccer Club would like to extend our heartfelt thanks to all our supporters, businesses and individuals who generously donated gifts as prizes to our 2011 Trivia Night held on 6th August at the Blacksmiths Inn. The evening was a great success and given the feedback appears to have been enjoyed by all. We thank all our participants for their support. Trivia winners were:

- \* Overall Winner- Jail Bait
- \* Runner Up - One Tree Hillbillies
- \* 3rd Place - Best Dressed
- \* 4th Place - Team Awesome
- \* 5th Place - Bob Hope & No Hope
- \* 6th Place - U6 Cheer Squad
- \* 7th Place - The CD's
- \* Equal 8th Place - Ambishus Butt Rubbish and Sardines
- \* 10th Place - Wishful Thinkers
- \* 11th Place - N.F.I.
- \* 12th Place - Acella & Jade

Best Dressed Table Prize went to the team 'The Best Dressed' - great look in their 80's attire! All original dress from their own wardrobes....Ahhh! Great mullet Shane! Best Decorated went to the 'Wishful Thinkers' after some deliberation. A few tables demonstrated some excellent artwork!

Raffle & Door Prizes were provided....too many to mention here....

Winners of Silent Auction

\* Power Tool Package (kindly donated by Gawler Power Tools) M. Tilly

\* Sony HD Camcorder (kindly donated by Alan Jones) S. Boman

\* Entertainment Book & Wines (book donated by Club, wines by Uleybury) N. Haskell. *Sounds like it was a great night!*





**JUST WRECKING**  
 ABN: 83 092 676 338  
**STUART TOYOTA'S**



**PHONE: 8359 4499 FAX: 8359 4500**  
 Corner of South Rd & South Terrace, Wingfield, 5013

**Kenton Communications**

- Data & Phone Outlets
- Digital T.V. antennas
- T.V. Outlets
- T.V. & Home Theatre Installation
- Optic Fibre Cabling & Terminating
- Telephone Systems
- Domestic & Commercial


**get READY for digital TV**

**Contact Brett Harding - 0400 783 196**  
 Email: [brett@kenton.com.au](mailto:brett@kenton.com.au)

ABN 98 474 668 522 Cabling Licence No. T28396

**GOVERNMENT ENDORSED ANTENNA INSTALLER**

**Kamcheyenne Limousin**  
 Shillabeer Road, One Tree Hill



**We would like to extend our gratitude to the many One Tree Hill residents who have supported our stud with sides of beef sales or the purchase of cattle through our starter herd program. The stud is also very excited to announce we are in the process of being accredited for:**

**Humane Choice - true free range program through the Humane Society International Inc.**

**To book for the purchase of Limousin cattle or sides of beef sales for late 2011 and 2012 or to find out more about our operation please call Sarah 0402 099 106 or John 0427 131 018.**

**NCPS INDUSTRIAL**

**Pumps, Generators, Hose & Fittings**  
 Servicing the One Tree Hill Area





**Present this advertisement for 15% off recommended retail price on DAVEY household pressure, sump & pool pumps also MEDO septic air blowers**

**DEPEND ON DAVEY WATER PRODUCTS**

**U2, 1445 Main North Rd, Para Hills West S.A. 5096**  
**Ph: 8285 2344**  
**Email: [sales@ncpsindustrial.com.au](mailto:sales@ncpsindustrial.com.au)**  
**Web: [www.ncpsindustrial.com.au](http://www.ncpsindustrial.com.au)**  
 (Opposite Bunnings Parafield)




**Wedding Engagement Naming Day**

**Special Birthdays including Children's Reunions Meetings or Other**

**Now on the web: [onetreehillhall.com.au](http://onetreehillhall.com.au)**

**One Tree Hill Institute Hall for Hire**

**Call 0459 105 045 or 8280 0000**  
**Email: [oth.hall@bigpond.com](mailto:oth.hall@bigpond.com)**



**ELECTRICIAN**

**Justin Kerkman**  
 A Class Electrician & Local Resident  
 Lic. No: PGE 230505

**Safety Switches & Faults**  
**Lighting / Fans / Sensors**  
**Sheds / Update Switchboards**  
**Generator Connections/Fire pumps**  
**All Jobs, Small & Large**

**Phone: 0412 880 532 or 8280 7212**  
**"Your Local Electrician"**





## COMMUNITY DIRECTORY

Hall Hire	Ph: 8280 0000 or 0459 105 045
Council Member	Joe Federico 0417 016 164
C/Member & JP	Andrew Craig 0417 016 160
Country Market	June B 8287 3306
Cricket Club	Brian Walter 0418 815 047
Friends of P/Wirra	Patsy Johnson 8280 7279
Home Assist	Playford 8256 0355
North Lakes Golf	Charlene 8284 0655
N/ Hills Pony Club	Kylie Scheffers 0422 882 184
OTH Grapevine	Editorial Team 8280 7095
OTH Progress Assoc.	Secretary 8280 7095
OTH Playgroup	Monday 0448 354 990
OTH Playgroup	Wednesday 8284 4555
OTH Primary School	8280 7027
Playford Band	Ivor McLatchie 8280 7214
School of Dance	Diane McLean 8280 7569
Scout Group	Trevor 8255 3155
Senior Citizens	Lance Walter 8280 7259
Soccer Club C/P	Ray 0423 029 626
Soccer Club Registrar	Sonia 0413 452 993
Tai Chi	Gail 8284 0022 or 0402 440 710
Tennis Club	Gary 8280 7067 or 0415 399 658
Wine Grape Growers	
(OTH Region) Ph: Fay 8284 0201 or Natalie 8280 7335	

# E & A Vanin



## LOCAL PLUMBING SERVICES

### DOMESTIC-COMMERCIAL-INDUSTRIAL

- General Plumbing Maintenance
- New Homes & Extensions
- Drains & Stormwater
- Bathroom Renovations
- Hot Water Service Changeovers

## REGISTERED MASTER

## PLUMBER

### EDDIE VANIN PROPRIETOR

M: 0412 394 689

Home/Office 8280 7970

## One Tree Hill Junior Baker Competition

Conditions of entry: The item of cookery to be submitted along with size and quantity will be published in the Grapevine in the month prior to the One Tree Hill market day. One entry per person. This will allow for seasonal baking such as Christmas and Easter.

Entries are to be delivered to the One Tree Hill Juniors Baker's table at the market between 9am and 9.30am.

Paper plates will be supplied and entry cards including entry number will be attached.

Judging will commence at 9.30am. There are 2 age categories: 1) Ages 5 to 8 years 2) Ages 9 to 13 years.

There is a 1st, 2nd and 3rd prize awarded in each category. Entries can be collected along with the prizes at 1pm.

Prizes are 1st: Blue Ribbon and \$15.00 2nd: Red Ribbon and \$10.00 3rd: Green Ribbon and \$5.00. How to enter:

You will need to email (oth.grapevine@bigpond.com) or complete the entry form and mail to One Tree Hill Progress c/o the Post Office One Tree Hill SA 5114. Or drop it into the General Store. You must include your name, age and phone number. Your entry form must be received by the Thursday (3rd November) prior to the Saturday Market on the 5th November.

## November Category is Chocolate Cup Cakes

Name	Age	Phone

### Results of the September Junior Chef Competition

Again we had a wonderful turn out for the baking competition with the theme being decorated biscuits.

What a talented lot of youngsters we have in One Tree Hill, all of the entries were quite creative with snakes and ladders biscuits winning 1st prize in the 9-13year age group. It was pleasing to see that we had more entries than last month, we're hoping that there will be even more for the October bake off which is Muffins.

Winners for September are as follows:

5-8 years 1st: Caitlyn 2nd: Maddison 3rd: Abigail

9-13years 1st: Brianah 2nd: Abbie 3rd: Angus

Encouragement Award: Joanna.

Encouragement Award: Elle and Stefan.

Well done to you all and good luck with next month's category of Chocolate Cup Cakes.





# Country Estates

RIA 100225

ONE TREE HILL 2,599m<sup>2</sup> \$625,000



Impressive family home including 9' ceilings up to 4 bedrooms, formal & casual living. 50' x 20' garage, carport, verandahs, swimming pool all on great allotment in highly sought location.

## Hills & Country Specialists

Shop 1&2 Birdwood Plaza,  
20 Shannon St, Birdwood SA 5234

**PH 8568 5105**



A book that could make you THOUSANDS of dollars.

**Yours FREE**

This book shows how to present your property for sale and gives you tips on how to select, and work with, a real estate agent.

Whether you are an experienced property seller or a novice, this book could make you THOUSANDS of dollars.

It's yours FREE - no charge or obligation. Contact us now and we will send you a copy.

ONE TREE HILL 25 acres \$595,000



ONE TREE HILL 7 acres \$615,000 - \$645,000



Providing the Highest Standard of Ethics & Service ~ [www.countryestates.com.au](http://www.countryestates.com.au)

## Looking for Roller Shutters?

For a FREE Measure & Quote  
Call Your Local Supplier



**ESJ INSTALLATIONS PTY LTD.**

One Tree Hill

Contact Earl on 0409 426 255

or A/H: 8280 7741

A1 Quality Workmanship & Materials  
Repairs and Conversions on Existing Shutters

**WE WILL NOT BE BEATEN  
ON PRICE!!**

## COMPLETE **HIRE** Equipment & Trailer

KANGA LOADERS - BOBCATS - EXCAVATORS

TRAILERS ALL TYPES INCLUDING TIPPERS



HORSE FLOATS

TRUCKS & TRADIE GEAR

**EARTH MOVING REQUIREMENTS**

\* CARTING \* SPREADING \* RUBBISH REMOVAL


**WE CAN  
DELIVER!**

Phone: Jason on 0418 823 287  
or John on 0410 104 418

Lot 10 Paxton Street, Willaston  
ABN: 51 008 178 979



<p><b>AUTO</b></p> <p><b>Frank's</b> Blacktop Auto General Engineering, Repairs to 4-Wheel Drives, Prestige Cars EFI &amp; All Mechanical repairs. Black Top Road 8280 7255 0410 490 246</p>	<p><b>BEAUTY</b></p> <p><b>BEST DRESSED MOBILE TAN</b> <b>Spring Special \$20.00</b> <b>Call Lea</b> 0411 416 011 Conditions may apply</p>	<p><b>ELECTRICAL</b></p> <p><b>ROGER GIRDHAM ELECTRICAL</b> <b>For all your Electrical Installations &amp; Maintenance Jobs</b> <b>Call Roger</b> 0417 853 863 Or: 8280 7788</p>	<p><b>GARDENING</b></p> <p>Geoff Jacobson for all of your gardening needs * Lawn Mowing * Tree Lopping * New Lawns * Fertilising * Weed Control * Pruning * Rubbish Removal * Landscaping * Shed Cleanouts Ph: 131 546 or M: 0407 733 832</p>	<p><b>MAINTENANCE</b></p> <p><b>WARNERS HOME MAINTENANCE</b> ♦ Gardening ♦ Odd Jobs ♦ Painting ♦ Pruning ♦ Gutter Cleaning ♦ Basic Home Maintenance CALL PETE: 0433 619 108</p>
------------------------------------------------------------------------------------------------------------------------------------------------------------------------------------------------------------------	------------------------------------------------------------------------------------------------------------------------------------------------------------	--------------------------------------------------------------------------------------------------------------------------------------------------------------------------------------------------	---------------------------------------------------------------------------------------------------------------------------------------------------------------------------------------------------------------------------------------------------------------------------------------	-----------------------------------------------------------------------------------------------------------------------------------------------------------------------------------------------------------------

<p><b>MOBILE HAIRDRESSER</b></p> <p><b>Mardi's Mobile Hairdressing</b> * Ladies, Men's &amp; Children's Cuts * Razor Cuts * Foils, Colours * Perms * Blowdrys, Sets * Upstyles Sick of using a straightener, non-chemical hair straightening using pure Keratin. As well as straightening your hair Keratin also conditions - lasts 6 months, short hair starts from \$150. Call Mardi on 0417 841 678</p> 	<p><b>PEST CONTROL</b></p> <p><b>Best Pest Control</b> * Spiders * Earwigs * Millipedes * Bees * Ants * Flies * Termites Call Paul on 0418 893 411</p>	<p><b>PLANTS</b></p> <p><b>Dealtry Native Plants Wholesale</b> Trevilla Rd, (Off Frank Barker Rd) OPEN 1st two weekends each month 10am-4pm. Plants from \$1.00 Ph: for directions. Ph: 8280 7079 0402 010 877 Gift Vouchers Available</p>	<p><b>ROAD GRADING</b></p> <p>Road Grading in One Tree Hill and the surrounding areas. Call for a FREE quote for all grading and road maintenance needs. Contact Merv on 0428 261 170</p>
----------------------------------------------------------------------------------------------------------------------------------------------------------------------------------------------------------------------------------------------------------------------------------------------------------------------------------------------------------------------------------------------------------------------------------------------------------------------------------------------------------------------------------	----------------------------------------------------------------------------------------------------------------------------------------------------------------------------------------	------------------------------------------------------------------------------------------------------------------------------------------------------------------------------------------------------------------------------------------------------------------------	---------------------------------------------------------------------------------------------------------------------------------------------------------------------------------------------------

**YOGA**

**THE YOGA BARN**  
Weekly Hatha Yoga Classes  
Mon & Wed 7 - 8.30pm  
Friday Morning 10 - 11.30am  
Bookings are essential as space is limited Call Kim 8522 3776 or 0412 192 076

**The Gawler Textile Arts Weekend will be held on Saturday 15th & Sunday 16th October at various venues throughout Gawler.**

**Ladies who attend the One Tree Hill Dollaholics will have their exhibition at Anne's Quilting Supplies, 32 Main North Road, Willaston (next to the Willaston Post Office and opposite the Willaston Hotel) between 10am and 4pm. Entry is Free.**

**Other exhibitors are:**

- \* Gawler Quilting Circle & Textile Artists at the Gawler Institute
- \* Gawler Art Society & Embroiderer's Guild at the Guide Hall
- \* Gawler CWA at the CWA Hall
- \* Zion Quilters at the Zion Lutheran Hall
- \* Gawler Community Art Gallery at the Gawler Railway Station
- \* Kornacraft at St Georges Anglican Church and Gawler Baptist Church who open on Sunday after 12 noon.

**Some exhibitions have entrance fees and refreshments are available at some venues.**  
**There will also be the opportunity to purchase some of the items.**  
**There will be quite a lot of signage and flyers will be available at each venue.**  
**The weekend is sponsored by Country Arts SA and Quilter Guild of South Australia.**



\*\*\*\*\*  
Playford Council Contact Details

24 hour Emergency & Lost/found dogs

8256 0333

General Enquiries and Burning Permits (seasonal ) 8256 0333 Email: playford@playford.sa.gov.au

Libraries: Elizabeth 8256 0334

Munno Para 8254 4600

When telephoning council with a request please remember to get a Customer Registration Number (CRN) to ensure registration and easy identification of your communication.

You can also phone or email your local Councillors.

Joe Federico Ph: 0417 016 164

Email : jfederico@internode.on.net

Andrew Craig Ph: 0417 016 160

Email : adcraig@ihug.com.au





## Community Notice Board

Do you have an upcoming Community event or a special announcement that you would like printed on this page? Keep notices as brief as possible please.

Email or call with your details. Email: [oth.grapevine@bigpond.com](mailto:oth.grapevine@bigpond.com) Phone: 8280 7095

Please note deadline date on the front cover for each edition.



### The One Tree Hill Walking Group

In July this the Grapevine printed a notice for the club asking for people to join Helen Turvey walking around our local area.

Helen reports that there was a wonderful response and there are now a group of 20 regular walkers.

They meet at the OTH General Store at 8am on Monday, Wednesday and Sunday. There are enough walkers to accommodate a variety of walking paces so if you would like to join them and get fit for summer please phone Helen on 8280 7035 or just join them at 8am on the days mentioned.

If the time doesn't suit they may be able to arrange a different walking time with some of the other members of the group.

Give Helen a call and she will see what can be done.

Pictured above are some of the walkers and of course a dog who loves his walk and receives a lot of attention.



Para Wirra Recreation Park

## OPEN DAY

SUNDAY 16th October 10-3pm

### FREE ENTRY

Bring along a Picnic Lunch and enjoy the natural environment.

See the wildlife, join Bush Walks for all ages, face painting, nature touch table, sausage sizzle, tea/coffee, soft drinks and much more.... Para Wirra Recreation Park is on the Humbug Scrub Road, Humbug Scrub in the One Tree Hill area.

For further information please contact the

FRIENDS OF PARA WIRRA:

Colin Winsor 8281 8136 or Leonie Hobbs on 8523 3557

### **In August 2011, Katelin McCue competed in the Australian Under 15's**

National Christian Schools Basketball carnival at Morphett Vale.

It involved teams from Victoria (2 teams), NSW, QLD and W.A.

Katelin also played in the SA team at last years carnival held in NSW.

She was joint captain of the team this year. Last year Vic defeated SA in the grand final convincingly and were undefeated for the tournament.

This year the contest was much tighter with each team beating the other during the minor round and SA defeated Vic in the semi-finals to go into the Grand Final. Vic defeated NSW and met SA in the grand final.

Unfortunately SA lost the final by 8 points. The girls played very well and defeated the other States pretty easily during the carnival.

Katelin just missed out on being selected in the Australian All Star starting 5 team which was announced at the end of the tournament.

Katelin is a local resident of the OTH area living at Sampson Flat.

Her proud Dad Darren sent this article into the Grapevine.



Katelin is in the back row of the photo and circled. Well done Katelin on your great achievement. Another local to be proud of.

### Next Country Market

Saturday 1st October

(9am-1pm Approximately)

at the One Tree Hill Institute  
Black Top Road.

Great variety of goods  
available including hand  
made cards, sewing, soaps,  
candles, and also the Junior

**Chef's Muffin judging.**

PROGRESS General Meeting - Thursday October 13th at 7.30pm.

Venue: One Tree Hill Institute, Blacktop Road, One Tree Hill.

New members are very welcome.

