

ONE TREE HILL GRAPEVINE



This is a free community Newsletter.

**However a Gold Coin Donation towards the cost of production
of the Grapevine would be most appreciated.**

**Please place your gold coin donation in the Piggy Bank at the General Store,
Post Office, Fodder Store or OTH Country Market when you pick up your copy.**

Deadline for the June edition is Monday 26th May 2014.



MAY- Volume 37 - Edition 4 - 2014

ANZAC DAY DAWN SERVICE 2014



EMERGENCY NUMBERS

Police: 131 444

Ambulance & Other Emergencies:

Country Fire Service: 000

Station: (When manned) 8280 7412

Hospital: 8182 9000

000

General Business: 8280 7055

Bushfire Info Hotline (24hr): 1300 362 361



www.cfs.org.au

From the Desk



Welcome to the May edition of the Grapevine, we hope that it finds you all well and happy. Winter is fast approaching and the nights are becoming quite cool so we hope you get the time to sit down and have a good read of the Grapevine.

The month of May is always very special for the Grapevine with photos of the OTH Anzac Day Dawn Service. We have quite a collection of wonderful photos that capture the Service on page 3 along with others on page 14 and 15. Well done once again to the OTH Progress Association for their efforts it's many months of hard work to get it all to come together for this special day.

The OTH Scouts are featured on page 10. What a wonderful group of young people, they were there to help set up and then cooked breakfast for the 600+ crowd that attended the service. They along with the CFS passed out rosemary and booklets to the crowd. Well done once again for helping Progress in such a big way.

We meet more stall holders for the market on page 5, this section has been very popular with a lot of new people attending the (regular) once a month market to meet some of the stall holders and look at what they have to sell.

On page 11 we have a notice from the Playford Council concerning those little pests that are in the gardens at the moment. We urge you all to get involved and control the rabbits in our area before they take over One Tree Hill.

From the past is on page 14, this month we look at McGilp Recreation Park and how it came about. We may have touched on the subject in the past but this is more detailed. Once again thanks to Daina from the Playford Library for her contribution.

Humbug Scrub had an open day on the 21st April, it was well attended and lots of fun, the article appears on page 15 with photos on page 16.

This month we are featuring the OTH Post Office, we hope that you are finding this an interesting article, it will help to get you to know our local businesses and what they sell.

We wonder did you get to see Kate and William when they visited Elizabeth, we heard that one local lad actually spoke to Kate, unfortunately we weren't able to track him down to speak to him, do you know who it was? We'd love to hear about his conversation with Kate and photos if he has any.

Good luck to Gary Fergusson who goes on his 2,000km bike ride next month. His story appears on the back page. We hope that you will all support this very worthy cause and give Gary some encouragement.

Until next month, The Grapevine Team.

Email: oth.grapevine@bigpond.com

Post: P.O. Box 196 One Tree Hill, S.A. 5114.

Phone: 8280 7095

President's Report May 2014

Hi, well we have just conducted the most successful ANZAC DAWN Service yet, with an estimated 600+ people present.

Our sincere thanks to all those who helped and assisted in any way. Particular thanks to Martin Hilton and his son, along with Champ, his horse, who also featured at the remembrance ceremony. As usual, June Owens has had a serious workload and has done an excellent job.

This year I tried to mention more of the local involvement in both WWI and WWII - the One Tree Hill community suffered great losses and with the population being much smaller than today, these losses affected many local families for a generation.

I mentioned the McKenzie family with Neil's father, Gordon, who along with his brother Duncan, broke in and trained

many hundreds of horses for the war effort. Mr Albert Baggs who was too ill to attend, Joyce his wife did attend.

One item I must mention is that Fred Riley has been asked to attend the 70 year remembrance of the landing of allied forces at Normandy. He will be travelling with eight other ex servicemen for the June 6th event. Fred flew air cover in his Spitfire over Utah beach during the landings. I will provide some more details upon his return.

Regards Ian Slater
President OTH Progress.

To contact OTH Progress Association
Email: oth.progress@bigpond.com
or by post: P.O. Box 196 One Tree Hill, SA 5114
or by phoning the Secretary on 8280 7095



**We live in a strange world where the poor walk for miles to get food
And the rich walk miles to digest food!**



Read the Grapevine on line



If you haven't had a chance to see an online edition of the Grapevine please go to the site:
www.onetreehillhall.com.au click on "About Us", scroll to the bottom of the page where you will be able to select the edition of your choice, the Grapevine will open up as a PDF. We have as many back editions of the Grapevine online as possible, if you can't find the one you are looking for, email us and let us know. This is a great way to share local news with friends and family who can't get a hard copy of the Grapevine. The Grapevine now has a facebook page. Check it out and have your say about your newsletter. <https://www.facebook.com/pages/One-Tree-Hill-Grapevine/379556192156386>



This newsletter is published by the One Tree Hill Progress Association. Email: oth.progress@bigpond.com Ph: 8280 7095

The views expressed in this newsletter are not necessarily those of the One Tree Hill Progress Association.

Its purpose is to share local news, views and events. Advertisers are responsible for the accuracy of the content of their advertisement.



ANZAC DAY DAWN SERVICE 2014



Photos taken by Megan and June.
There were so many to choose from, it was very hard deciding which ones to print! Thank you.



ONE TREE HILL GRAPEVINE

CFS REPORT MAY 2014

Incident Report



After a hectic summer, the Brigade has had a very quiet month, with only a couple of car accidents spoiling the record. The most serious of those saw a young man taken to hospital by ambulance following a collision with a tree. Arising out of this incident comes a reminder of the importance of getting the location right if you are calling 000.

For those with smart phones, there is an app available called "Emergency +" that will tell you where you are, if you're not sure and even dial 000 for you.

The quiet month has proved timely for the Brigade as we took possession of a new appliance at the start of the month. The new tanker replaces an existing appliance which will now move on to a less active Brigade. Learning about the new truck has kept the Brigade busy, along with the ongoing training that takes place every Monday night at 7.30pm.

This is a timely reminder that the CFS starts to accept new recruits at this time of the year ready for the next fire season. If you are over 18 years of age and like being a part of a team, why not consider joining us at the One Tree Hill Station.

Do you live a few minutes away from the CFS Station?

THE CFS NEEDS YOU!

The fire season officially ends at midnight on the 30th April, 2014 (subject to change). Please ensure that you are familiar with your local Council restrictions before lighting fires in your area during the off season.

With the end of the fire season upon us, it is a good time to reflect on how prepared you were this season. How did you respond when the dam caught alight in the middle of January? If you didn't have a Bushfire Plan to put into action, now is the time to get things organised. There are some excellent resources at the CFS web site to help with your planning. Just for to www.cfs.gov.au and click on "Prepare for Bushfire".

For general information please contact OTH Duty Phone on **8280 7055**

You can also visit the CFS website: www.cfs.sa.gov.au or phone **1300 362 361**

Councillor's Report MAY 2014

A belated Happy Easter to all. By now the Royals should have come and gone and hopefully some of you may have caught a glimpse of William and Kate. ANZAC Day commemorations should also have come and gone and although I am writing this before both events to meet deadlines I am sure both would have been (especially the ANZAC commemorations) a resounding success, showcasing the commitment of our community to God, Queen and Country.

May will see the release of the Draft City Plan, which all things being equal and without any unforeseen circumstances should be released for Community Consultation from the 7 – 27th May with a public hearing being held at the Council chambers on the night of the 27th from 7.00 – 8.00 pm.

At the time of writing this, the Draft City Plan has not yet been endorsed by Council so I am not at liberty to divulge the content. However it is in the best interests of ratepayers to familiarise themselves with the Plan and make comment if they so desire. My belief is that the plan introduces, if approved, some new services, long awaited for by ratepayers, maintains some services that were at risk of being cut or reduced and provides a mechanism (and funds) to reduce debt, albeit minimally, this of course will come at a cost, but overall the Plan, I believe, for once provides a reasonably fair and equitable spread of services across all areas of the City.

Please be aware that during the same consultation period a second paper on Commercial Rates will also be out for public consultation. However the public hearing on the 27th will be **only for the City Plan** and feedback forms will be provide for the Commercial Rates position paper. Confusing, yes, but that is the functionings of local government, somehow some of us don't understand the KISS concept.

We now have a newly elected Labour Government and it is time to put political differences aside and work together in the best interests of our electorate and State. Your local politicians can be contacted via email at, for Jon Gee, napiet@parliament.sa.gov.au and for Nick Champion MP, email Nick.Champion.MP@aph.gov.au. If you have any concerns or issues with or about our City, please in the first instance phone **8256 0333** and or send your e-mails to playford@playford.sa.gov.au this will ensure that council sees your concerns and then forwards your e-mails on to me. If you are uncomfortable with council viewing your comments then please e-mail me at jfederico@internode.on.net and mark it "CONFIDENTIAL" otherwise I am obligated by law to forward your email onto Council for record keeping purposes. If subsequent to that approach you do not receive a timely or satisfactory result please feel free to contact me personally. However I cannot guarantee that I will be able to get any better results but will at least have council reassess their position and provide an explanation as to their resolve and in some cases if not most, reach a compromise that is acceptable to all parties concerned. Council's 24 hour phone number is **8256 0333** for all your enquires and or requests. Remember to get a Customer Reference Number (CRS) to ensure registration and easy identification of your communication.

Cr Joe Federico

Fax: **8280 7963**

Phone: **0417 016 164**





Volunteers are always needed at OTH Progress. Progress would love to hear from you have some time on your hands and you would like to be part of a great team.

SPOTLIGHT ON THE MARKET

Meet Fran and Bob



The wine that Fran and Bob produce are truly hand made wines, every vine was planted by them, they put in each and every pole, they prune the vines and hand pick the grapes to make the wine. They also bottle it themselves and label it and sell it. Not one of their wines is processed or bottled commercially.

The olives they sell are true organic with no chemicals.

Fran and Bob have been attending the OTH Country Market for about 3 years and have lived in One Tree Hill for over 40 years.

They specialise in Wine, Verjuice, Olives, Hand Engraved Glassware and Bar Accessories. Fran and Bob worked for 2 wineries in the Barossa Valley and decided they would grow their own grapes after watching how it was done. They planted their first vines in 2000 and they have expanded over the years.

Fran and Bob produced their first wines using the old fashioned method of open fermenters and a hand powered basket press which they continue to use today. They put their emphasis on making handmade quality wines.

You must go and speak to Bob and Fran about their beautiful full bodied wines when you attend the market next time. They are located in the stage area in the main hall, free tastings of wines and olives are available

Their best sellers are probably the Shiraz and specialty ports, especially the Chocolate and Rum.

They only bring a certain amount of wine to the market so to ensure that they have what you need please email Bob and Fran sales@hilltopwines.com.au and they will bring it to the market for you.



Meet Linda



Linda Janine's Jewellery and Art is a stall in the second hall that has been there for about a year. Linda specialises in jewellery, scarves, bookmarks, earrings, key rings, hairclips and hair bands.

Linda started her craft work with painting but soon it turned to jewellery making because she has two children who inspire her to make modern jewellery. The hobby came about when her children started school and it has really grown. The versatile range of jewellery suits the very young, teenager and adult.

If Linda doesn't have what you are looking for, she is happy to make it up as a special order for you.

Linda has a great passion for art and jewellery making and all of the designs are her own.

Pop along to say hello to Linda when you come to the market next month, ask her about her designs and take a moment to browse her assortment of jewellery, bookmarks and hair accessories.



Looking for Roller Shutters?

For a FREE Measure & Quote
Call Your Local Supplier



ESJ INSTALLATIONS PTY LTD.

One Tree Hill

Contact Earl on 0409 426 255

or A/H: 8280 7741

A1 Quality Workmanship & Materials
Repairs and Conversions on Existing Shutters

**WE WILL NOT BE BEATEN
ON PRICE!!**

RECYCLING - BULKY - GOODS

COLLECTION

FROM \$30 PER ITEM

SKIP

Open Waste
FROM \$80

DROP OFF-

Mattress
FROM \$15



www.distribution360.com.au

D3 DISTRIBUTION 360 Pty Ltd

0414 280 891



Lot 10 Hatcher Court, BURTON SA

Ezykleen
carpet cleaning

Ezy Kleen provides excellent, friendly and value for money service.
Specializing in cleaning carpets, rugs, fabric and leather upholstery,
tiles, water restoration and insurance claims.

10 Years Experience

We Provide Attention to Detail

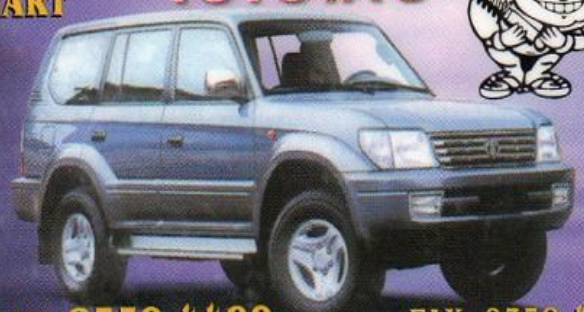
We don't cut corners, we clean them

10% Discount
when neighbours book at same time

Phone for quotes and bookings

0438 299 333

JUST WRECKING
ABN: 83 092 676 358
STUART TOYOTA'S



PHONE: **8359 4499**

FAX: **8359 4500**

Corner of South Rd & South Terrace, Wingfield, 5013



No Job
Too Big or
Too Small

Professional Tree & Stump Service

Call Brad for FREE QUOTES

on: **8365 8000**

Don't Forget to ask for our
Special Grapevine Price....

Just NISSmaz

NEW, USED, RECO PARTS

Cars, Commercial & 4WD's



Ph: (08) 83591444

nissmaz@neonet.com.au

FARM MACHINERY

- * Slashers (5' and 6')
- * Backhoes
- * Wood Chippers (3PL)
- * Tow Along Mowers (ATV/4WD)
- * Rotary Hoes (6')



Stock at Hand
& Orders Taken

Local Sales for Small/Medium Farms

Direct Importers, So Great Prices Ph: 0406 382 342

www.safarmequipment.com Uleybury

Body

Massage

& True
Health

Ann Consadine

*Dip. Rem. Mass, Dip. Reflexology, Cert. IV Masters in Fitness,
Rehab Trainer, Chiball Instructor*

*Remedial Massage, Workcover Provider, MVA Provider,
Hot/Cold Stones, Cupping, Reflexology, Personal/Group
Fitness, Boot Camps, Chiball Classes, Rehab Fitness Classes,
Nutrition Advice.*

331 Toolunga Road, Yattalunga SA, 5114

Phone: 0412 875 998 or 8280 7354

Roger Girdham Electrical Pty.Ltd.

For all your

Electrical

Installations and
Maintenance jobs

Call Roger on

0417 853 863 or

8280 7788

Serving the local community
for 16 years

Elec. Lic PGE 147979



Rob Green Security

**Servicing, Installation, Monitoring
Your Local Technician**

Ph: 0419 398 346



**Dr. Steven O'Connor
(Acupuncture)**

B.HSc(Acu), Adv. Dip. Nat., Adv. Dip HM.,
Dip. App. Sc(Ag), Dip.RM.

Acupuncture, Remedial Massage,
Naturopathy. For Alternative natural
medical solutions for health needs.

Health Rebates Apply

Kilberin, Cornishmans Hill Road

One Tree Hill S.A 5114

8280 7003 or 0407 820 422



**SEPTIC TANKS
PUMPED OUT**

For good old fashioned service call

8283 3656



**SEPTIC
PUMPING
SERVICES**

Email: septic1@bigpond.com

Web: www.septicpumpingservices.com.au

E & A Vanin

LOCAL PLUMBING SERVICES

DOMESTIC - COMMERCIAL - INDUSTRIAL

- . General Plumbing Maintenance
- . New Homes and Extensions
- . Drains and Stormwater
- . Bathroom Renovations
- . Hot Water Service Changeovers

REGISTERED
MASTER PLUMBER
EDDY VANIN PROPRIETOR
Ph: 0412 394 689
or Home/Office
8280 7970



OUR VISION

"People of Faith sharing God's Love as we Worship and Serve in the Community"



SUNDAY SERVICE - 10.00am

Join us for our Sunday Service at 10am each week, followed by a "cuppa" in the hall at the end of the service.

CHILDREN AND YOUTH MINISTRY

Sunday School and SMYG (Sunday Morning Youth Group) meet at the same time as the worship service.

OP SHOP

Our Church, together with 3 other local churches, run the Red Bird Op Shop in Elizabeth North, with all proceeds going to the Churches and Mission. Donations of second hand clothing are always appreciated, and can be dropped off at the shop at Hilcott Street, Rosewood Village, Elizabeth North between 9.30am - 3.00pm Mon-Fri.

WEDDINGS, BAPTISMS & FUNERALS

The Church is available for all these Services upon request. For further details please phone Edna on 8255 7987.

MARKET STALL

Our ladies run a stall each month at the Market selling a variety of home-made cakes, slices and biscuits as well as plants, bric-a-brac, games, books and much more. Come along, have a look and say hello - we'd love to see you. This month we are holding a Mother's Day Raffle, tickets are \$2. The raffle will be drawn at 12noon on market day 3rd May.

MONTHLY FELLOWSHIP

Meet together on the **4th Wednesday of each month at 10am**, beginning with Morning Tea and followed by a Guest Speaker.

Our next meeting is **Wednesday 28th May 10am** - Morning tea and then a talk by our Guest Speaker Janet Allison, who will talk on **"Aboriginal History in One Tree Hill"**.

For further information please phone Maureen on 8280 7368

PONDERISMS

I used to eat a lot of natural foods until I learned that most people die of natural causes!

The easiest way to find something lost around the house is to buy a replacement!

Never take life seriously. Nobody gets out alive anyway!

Who was the first person to look at a cow and say. "I think I'll squeeze these dangly things here and drink whatever comes out!"



Horse Care - Cantering a Balanced Corner

Cantering corners often causes problems with balance. Riders feel as if they are sliding to the outside. Most compensate by pushing into their outside stirrup, to hold themselves up. Horses react by drifting outward. Instructors often try to counter this by saying "sit to the inside" or "put weight into your inside stirrup". Mostly, the horse then spirals inward.

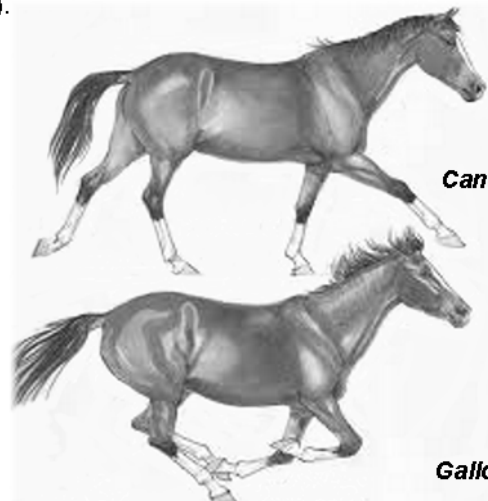
I ask you to think about carrying a child piggy-back fashion. If the child sits still in the centre of your back, they are easy to carry. If they wriggle, it becomes more difficult. If they lean one way, you tend to drift toward the way they lean. This is to get the centre of gravity (centre of balance) above your feet. The same happens to your horse. Lean over and he has to move sideways. Wriggle and he is compensating frequently.

So, when you feel as if you are being thrown to the outside of the saddle on a corner, and compensate by leaning in, or putting weight into the inside stirrup, the horse has to step under your weight (spiral in).

Sally Swift speaks about "shifting the sand from the outside hip to the inside". I have found the easiest way to explain this is to suggest the rider kneel on the ground - leave the stirrup alone. Just kneel on the ground with your inside knee (no, you cannot reach the ground - this is an image to work toward). The foot will be held up by the stirrup but - and this is the key - do not add weight to the stirrup. By stretching down from the hip to the knee through the inside leg, you "shift the sand". Try it while sitting on a chair. Feel how the weight changes in your buttocks without changing the position of your hips or legs. This will not throw the horse off balance but helps you to sit the corner.

Now, try it while being passenger in a car. Close your eyes and as you feel yourself being thrown to the outside of the corner, "shift the sand" or stretch down with the inside knee. In a bucket seat you will feel balanced, not thrown around at all. (Bench seats may be more treacherous).

The balanced horse-and-rider will be able to execute better corners. He will hold the curve and be bent correctly (because you will not be holding his head out to stop the drift to the inside).



Cantering



Gallop

If you have any horse query for Julie please email the Grapevine.
Email: oth.grapevine@bigpond.com



ONE TREE HILL FODDER & RURAL SUPPLIES

Shop 4/9 Black Top Road,

One Tree Hill

Ph: 8280 7680

Hours of Trade

Monday to Friday 7.30am to 6.00pm

Saturday & Sunday 9.00am to 4.00pm

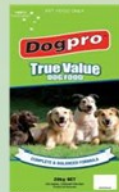
* Golden Yolk and Xtra Egg 20 kg have been on special for 3 years now.
2 for \$29



* Keep your pocket in check with Calm Performer this has been recognised as a product you want to see as a permanent special \$15



* Rover looking at you with loving eyes? Tru Value Dog Food 16% protein 8% fat, 20kg \$23



* If its not pasture or grass it may be a weed. The season of weeds is upon us, herbicides for almost anything from 1 litre to 1000 litres



* Want something to do while its cool? Green (CCA) Posts and some rails and Creosote posts, most available in stock



* Fence falling over? Gate hit by a bull? Farm gates, hinge packs, fencing wire, straining tools, joiners. Get the picture?



* We stock superphosphate and Bounce Back (plus others) for fertilizing paddocks and lawns. Ask about seeds for the pasture at the same time - generally available the day after. Glyphosate for all weed kill, Amine 625, MCPA (Ravage) for broadleaf.



* Get your troughs in order this winter, Trough blox to clean the water or even buy a whole trough. 200 litre round plastic tub with float valve, large bung, 300mm high \$295 - great value



* Camping means full gas cylinders. Bring them in for refilling early so you don't forget.



* Stock will be pushing their way through small breaks in fences to get the green grass on the other side. You could electrify the fence with **GALLAGHER** Gallagher products. We have a large range to suit most applications.



* We are asked for a very wide range of products. Some we can get in quickly, others may take a little time. Paint Brushes, LED Spotlights for sheds etc. 25mm solenoids, gas hoses and O rings, garden insecticides, rope, chain, cheaper secateurs, replacement plugs for 240 volt cables. All yes, and in stock.



* Get the scum out of your pool with Hydrochloric acid.



* Pot belly and wood stove paints, cements, sealants - prepare yours for winter.



MORE THAN JUST A COMPETITIVE FODDER STORE



Dean and Sabine - Email: sales@onetreehillfodder.com

Looking a Little Closer at our Businesses!

Introducing Pam Farrington from the One Tree Hill Gift and Post. Pam moved to One Tree Hill in 1983 to enjoy a country lifestyle and community. During that time Pam was involved with the OTH Progress Association as a committee member and also with the Community Craft Shop that was in the shopping centre many years ago.

Pam opened a Chocolate/Home Baking and Cooking Shop in 1998 in the very same premises as the current post office.

In 2002 Pam moved to Birdwood to expand the business, then disappeared 'out bush' for five years to tackle the trials and tribulations of owning and managing an hotel 'in the middle of nowhere in particular' as she puts it! 'Although it was a great experience it's good to be home in One Tree Hill' Pam says.

The Post Office, as many who already know has presented it's challenges to Pam but thanks to everyone's patience, support and understanding, she is much more settled and comfortable with its daily challenges.

Despite subtle (and some not so subtle) hints and requests, she doesn't think the Post Office will be offering quiche, hand made chocolates etc. to complement the postal service - (not yet anyway!)

"The best I can do at present is to offer a range of rustic/country style gift lines with new scarves arriving soon", Pam said.

Do you or a member of your family have a concession card? Don't forget to apply for your Australian Post Concession Card to be eligible for concession stamps and other concession products. Application forms are available at the Post Office now.

We wish Pam all the very best for her new business venture in OTH.

ONE TREE HILL POST OFFICE

YOUR ONE
STOP SHOP TO
PAY BILLS



ONE TREE HILL



NEW
GIFTWARE
ARRIVING



GIFT & POST
FOR ALL YOUR BANKING,

BILL PAYING, POSTAL NEEDS, GIFTS AND LOTS MORE

PH: 8280 0090 FAX: 8280 0030

OPENING HOURS: MONDAY TO FRIDAY 8AM - 5PM

SATURDAY 9AM - 12PM

Agents for Commonwealth Bank

SHOP 1B LOT 2 BLACK TOP ROAD, ONE TREE HILL, 5114



The One Tree Hill Scouts did a great job once again helping out with the preparations for Anzac Day.

They cooked up a feast for the 600+ attendees to the Anzac Day Dawn Service as well as handing out rosemary and booklets to many people.

They also helped with dismantling after the event. They need to know that they are really appreciated and should be very proud of their achievements in this small community.

OTH Progress thanks them very much for their help.

Pictured on the left is the OTH and Cubs with their leaders



Crime Report – ONE TREE HILL Rural Watch – Offences reported between 13th March and 10th April, 2014

Overnight 13th March

Farm equipment stolen from paddock.

Theft

One Tree Hill Road, ONE TREE HILL

Between 25th & 27th March

Hot water service x 2 stolen from property.

Theft

Kentish Road, ULEYBURY

Between 23rd & 30th March

Number plate stolen from trailer.

Theft

Humbug Scrub Road, HUMBUG SCRUB

The report was sent to the Grapevine earlier this month because of commitments by the officer who sends the report in. Lets hope that not too much happened in the area after the report was sent to us.

As always if you have any information to assist with any crime issues in the area
please phone Police Communications on **131 4444**



In life there are five things that you do not get back:

The stone that you have thrown, words that you have said, moments you did not take advantage of, time that has passed and the chances you did not take.

Life is short so surround yourself with people who appreciate you and make you bloom. Be honest and true, break the invisible rules, forgive quickly, kiss slowly, love wholeheartedly, laugh hysterically and do not regret anything made you smile!



Over Easter you may have noticed a rise in rabbit numbers in your garden, veggie patch or around your home and now is the time for control.

Once established in rural areas rabbits can cause extensive damage to crops, pastures and native vegetation and are difficult to control, requiring constant landholder action to manage.

If you have them visiting your place they may also be visiting the neighbours.

The best way to deal with rabbit control is to work with your neighbours.

Some simple things you can do are to remove hiding places, destroy warrens, set bait or install a rabbit-proof fence.

For more information contact

Natural Resources

Adelaide & Mt Lofty Ranges

Northern Foothills

Project Officer

Monica Seiler on 8256 0411.



Natural Resources

Adelaide and Mt Lofty Ranges

Government
of South Australia

Senior Citizens

If you are over 50 years of age you are welcome to attend the OTH Senior Citizens. It is held each Tuesday afternoon at the One Tree Hill Institute, starting at 1.30pm and finishing at 4.00pm.

There is a variety of activities to join in, including carpet bowls, cards or just a general chat. Please feel welcome to join them if you are new to the town or you want to make new friends.

Phone Lance on 8280 7259
for further information



"ADELAIDE NORTHERN VETERINARY GROUP"

Drs. ALAN & ROBERT IRVING, B's.V.Sc

Modbury—Salisbury—Elizabeth East—Elizabeth Park

Ph: 8280 7353 or M:0419 806 213



www.adelaidenorthernvet.com.au
Email: alanirving@internode.on.net

Kids Page

Hello, I hope that you are enjoying your school holidays. I thought I may have heard from a few of you to say how you were spending your days. I think perhaps most of you must have gone away for a break because I only have 2 stories this month. I hope you enjoy the extra puzzles that I have for you, if you would like a particular puzzle to be included in the newsletter please write and let me know what you would like.

I wonder did any of you attend the Anzac Day Dawn Service? There were a lot of kids there who just loved the appearance of Champ (the horse) and all of the memorabilia to look at.

Until next month, Auntie Bev.

Email: oth.grapevine@bigpond.com or drop me a line at the Grapevine.

Postal address is OTH Grapevine P.O. Box 196 One Tree Hill Post Office, SA 5114.



Q: What has a foot but no legs? A: A snail

Q: Poor people have it. Rich people need it, If you eat it you die. What is it? A: Nothing!

Q: What comes down but never goes up? A: Rain!

Q: I'm tall when I'm young and I'm short when I'm old. What am I? A: A candle!

Q: Mary's father has 5 daughters - Nana, Nene, Nini, Nono. What is the fifth daughters name? A: If you answered Nunu, you are wrong. It's Mary!

Q: How can a pants pocket be empty and still have something in it? A: It can have a hole in it!

Q: In a one-story pink house, there was a pink person, a pink cat, a pink fish, a pink computer, a pink chair, a pink table, a pink telephone, a pink shower—everything was pink! What colour were the stairs? A: There weren't any stairs, it was a one storey house.

Q: Why did the cow go in the spaceship?

A: She wanted to see the moooooooon!

Q: What do planets like to read? A: Comet books!



A Dad and his son were riding their bikes and crashed. Two ambulances came and took them to different hospitals. The man's son was in the operating room and the doctor said, "I can't operate on you. You're my son." How is that possible?

A: The doctor is his Mum!

Q: What is the longest word in the dictionary?

A: Smiles, because there is a MILE between each 'S'!

Q: If I drink, I die, If I eat, I'm fine. What am I?

A: A fire!

Q: Throw away the outside and cook the inside, then eat the outside and throw away the inside. What is it?

A: Corn on the cob, because you throw away the husk, cook and eat the kernels, and throw away the cob!

Q: What is a light-year?

A: The same as a regular year but with less calories!

Q: What kind of tunes do planets sing? A: Neptunes!

Q: Why don't aliens eat clowns? A: Because they taste funny!

Q: Who says sticks and stones may break my bones, but words will never hurt me? A: A guy with who has never been hit with a dictionary.

Q: How do you make a fire with two sticks? A: Make sure one is a match!

Q: Why did the banana go to the hospital?

A: Because he wasn't peeling well!

Q: Why can't you tell a joke while standing on ice?

A: Because it might crack up!

Q: What starts with an E, ends with an E and only has one letter?

A: An envelope!

Q: What is at the end of everything?

A: The letter G!

Q: What nails don't carpenters like to hit while working? A: Fingernails!

Q: Why is tennis such a loud game? A: Because each player raises a racquet!

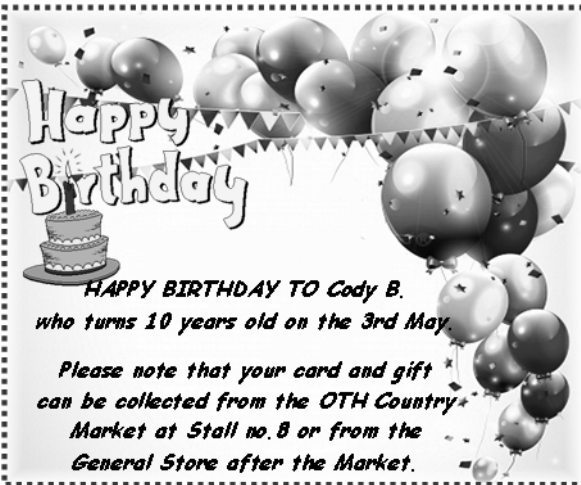


Ryan the Komodo Dragon

Once there was a Komodo dragon called Ryan. He was playing cards with his friend water Buffalo. But Ryan ate water Buffalo. Because Komodo dragons eat water buffalo's. THE END.

Thomas D. Age 7 years

Great imagination Thomas, we can't wait for the next installment!



Q: What's a spaceman's favourite food?

A: Mars bar of course!

Q: Why did the sun go to school?

A: To get brighter!



Not long ago we had our awards day for Little Athletics. First I got a silver medal and they told me I was so close to getting gold. A bit later I got a trophy for track, I was the best in under 10 boys. Later on they called out my name again and I got the trophy for distance. I was really pleased because I was the best for distance in the whole club. My name was put on a plaque that goes on the club room wall as well.

Joshua Age 9



OTH Kookaburra Club



Have a story to tell or just want to see your letter in the Grapevine? Email or write to the Grapevine with your name, address and phone number along with your birthday and register.

Perhaps you would like to send in a short story or a joke with your details.

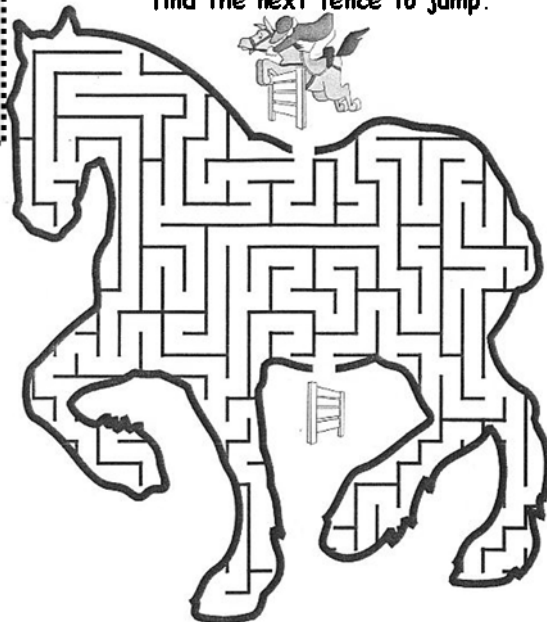
There are great awards and a birthday gift for all who join our club.

Q: How do you know when the moon has had enough to eat? A: When it's full!

Q: What do you call a tick on the moon?

A: A lunar-tick!

Help the jockey and horse find their way through the horse shaped maze to find the next fence to jump.



Word Finder—Find all these words

AUTUMN	CORN	FIELD	GOOD	HAIL
HIDE	HUNT	LOST	NICHOLAS	RAHAB
RIGHT	SEEK	STEAL	WILL	WRONG

F Q A U T U M N C R K O
H I W G G O U C O A C N
E U E W O D V M R H S I
H A I L O S T W N A E C
F L H I D E R J H B E H
L B B U U O V H S O K O
Z Y B F N D S A F T B L
S N F G C T H G I R Y A
E C J G E O J T B H L S
P B G A O V Z K K M V Y
C U L P B M S V I P V D
U B V T Y P V U U O E J





From The Past McGilp Recreation Park



From 1870s One Tree Hill residents used a flat known as Sampson's Flat as their recreation grounds. When the property was sold the district was faced with job of finding a new suitable venue. A relatively newcomer to the district, Lachlan McGillp donated 5½ acres of his property as a recreation ground to the community. In recognition of this generosity the residents named the reserve the McGillp Recreation Park.

Lachlan Keith McGillp was pastoralist and owner of the property named "Tindilla", One Tree Hill. He and his brothers were partners in "Mollawatana Station" at Copley. He was born in 1901, the son of Neil from Argleshire, Scotland and Florence Tapley. Lachlan was educated at Port Augusta, Holdfast Bay and Prince Alfred College. He gained his pastoral experience on "Mollawatana Station" until he was 21, at which time he became a partner with his brothers. He was appointed manager in 1924. Lachlan purchased "Tindilla" in 1927, a freehold property carrying Merino sheep.



Pictured is Lachlan Keith McGillp

The recreation park grounds is ideally situated close to the main road on a small road leading past the Institute. The community organised working bees and erected a large fence and gates, laid down a cricket pitch, two asphalt tennis courts and other conveniences.

The park was officially opened, Mrs. H. W. Kelly, wife of the Chairman of Trustees. A cricket match followed, organised by H.H. Blackham, the teams being Old 'Uns v Young 'Uns. Playing for the veterans were such well remembered One Tree Hill players, Herman Bischof, Frank Ifould, H.H. Blackham, George Bowman, F.D. Taylor, Albert Riggs, F. Bowman, W.M. Kaiser and Rehn.

The Old 'Uns won the cricket, the scores being:
Old 'Uns, 122; Young 'Uns 113.

The scores of the Old 'Uns as follow show that although it was not the pitch they used to play on many years ago, they had not forgotten how to wield the willow. H. Bischoff, 5, P.D. Taylor, 2, A.Rehn, 11, H. McKenzie, 11, A.H. Riggs, 25 (not out), F.Bowman, 17, E.C. Loftes, 25, J. Harvey, 12, G.Bowman, 2, W.M. Kaiser, 2, F.L. Ifould, 0, H.H. Blackham, 0.

A tennis match played on the new courts, Salisbury Methodist v One Tree Hill resulted in a win for the visitors.

At 3pm a very interested but not large crowd gathered. The Gawler District Band opened proceedings with the National Anthem and the Song of Australia and played throughout the afternoon. Play stopped for a 12.30 lunch provided by the district ladies in the Institute Hall. Many interesting anecdotes of former cricket victories were recounted over lunch. H.W. Kelly expressed the gratitude of the district to Mr. Lachlan McGillp for his generosity.

The days festivities continued with a pub tea in the Institute followed by a concert and dance. The providers of the concert programme were Mr and Mrs. Glen Bosisto, Mr and Mrs. R. Bosisto, Misses Audrey Davies, Roma and Selma Fiebig. Funds raised from the evening amounted to about £24, which were set aside for further improvements to the grounds.

The community continued to raise funds for the continual improvement of the grounds. In 1935 a Fancy Dress Ball was held. Visitors from Adelaide, Gawler, Golden Grove, Smithfield and surrounding districts came. It appears there were many noteworthy costumes of many periods with many countries represented. Best Dressed Lady was awarded to Mrs. Chinner; Best Dressed Gent was Mr. S. Hicks; Humorous Gent was Mr. Chinner; Humorous Lady was Miss Leonard. A Monte Carlo Fox Trot was won by Mr. T. Parker and Miss Avery. Mr G.K. Fry acted as Master of Ceremonies and the music was performed by "Rhythm Aces".

There have been continuous improvements to the grounds over the years. It now contains club rooms, soccer pitch and playground and is managed by the City of Playford.

References :Buryip (Gawler, SA : 1863 - 1954)(about) Previous issue Friday 2 August 1935. Next issue Buryip (Gawler, SA : 1863 - 1954 Friday 28 March 1930.

Photos above and on right for illustration only. This is a 1935 Fancy Dress Ball.



Champ and his role in the Anzac Day Dawn Service

The horse is equipped with military saddle, saddle wallets and carrier for the spare shoe and nail.

The light horse troopers are uniformed for 1917 ANZAC Mounted Corps that fought in Palestine, now Israel.

The trooper is leading the horse with boots reversed in the stirrups. The tradition of boots reversed is for a funeral and dates back to the time of Genghis Khan.

The exact meaning is lost in history but it is said to represent the spirit of the dead rider looking back at his column.

It symbolizes respect and mourning for the fallen.

As we had soldiers in the 1st and 2/39 Light Horse it is an added gesture to the Dawn Service.

Old photos for illustration only: The 'Lone Charger' on the right and a member of the Light Horse, photos taken around 1917.

Below right: OTH's 'Lone Charger', Champ.



ANZAC DAY DAWN SERVICE 2014

The Anzac Day Dawn Service was held at the One Tree Hill Institute again this year. What a memorable occasion it was with a special attendance from "Champ" the "Lone Charger" who has only been in training for about a year. His handlers Martin and Tim Hilton must have done a great job as he behaved perfectly for them in front of a crowd of 600+ attendees.

It was wonderful to see so many servicemen and women from out community in attendance, ranging from WWII Veterans to current members of the Armed Forces. June and the Progress Association were very grateful to the RAAF Edinburgh, Troopers Martin and Tim Hilton, Champ, Senator Sean Edwards, Chaplains and invited guests along with Wreath Layers for their input into the Service.

Thanks also goes to the OTH Scouts, CFS and Megan our photographer for their assistance during the morning. The Blacksmith's Inn donated rum for the occasion, the OTH Uniting Church baked Anzac Biscuits and cups of tea and coffee. On the 24th numerous wonderful members of the community arrived unannounced to help set up the hall.

It made the job so much easier and shortened the workload by hours. To all the people who kindly loaned their memorabilia to be displayed it was much appreciated. People are saying that they were even more impressed with this years displays. Apologies to any that may have been missed but the gratitude felt by the OTH Progress Association is immense.

You may have seen local Fred Riley on TV on the 24th April, Fred was interviewed by Today Tonight about the time he spent overseas fighting in his Spitfire.

Fred is about to embark on a trip to Normandy along with eight other Australian servicemen. The trip is in remembrance of the 70th Anniversary of D-Day and The Battle of Normandy. It is a celebration of freedom for the people of Normandy.

The battle of Normandy was the key to Allied success in France. After the landings on the Normandy beaches on June 6th 1944, the Allies faced the major issue of moving off the beaches and into the heartland of Normandy and from Normandy to Paris.

Fred's job was to protect ground forces as they moved their position. More of the story will follow when Fred returns from Normandy.

Fred leaves at the beginning of June for his trip, we wish him a safe journey and may the memories not be too painful for him and his mates.



Pictured above are some of the crowd in one of the halls, and the stage with the old uniforms of veterans. To the right are the wreaths that were laid at OTH's Memorial.



ONE TREE HILL

GENERAL STORE

- ◆ FRESHLY BREWED COFFEY COFFEE
- ◆ FRESHLY COOKED PREMIUM BURGERS OR SCOTCH FILLET STEAK SANDWICH OR BURGER
- ◆ FRESHLY MADE BACON AND EGG ROLL OR SANDWICH
- ◆ FRESHLY MADE ROLLS AND SANDWICHES



Ph: 8280 7020

NEW TRADING HOURS

Monday to Friday
7.00am - 7.00pm

Saturday & Sunday
8.00am - 5.00pm
9.00am - 4.00pm

FRESH FLOWERS AND GIFTS
AVAILABLE FOR MOTHERS DAY

HAPPY MOTHER'S DAY TO
ALL THE MOTHERS AND
GRANDMOTHERS
ON THIS SPECIAL DAY
SUNDAY MAY 11th



CLOSED: New Years Day,
Good Friday, Easter Sunday,
Easter Monday, Xmas Day & Boxing Day.

KAMCHEYENNE LIMOUSIN



WE GUARANTEE

HEALTHY, CLEAN, LEAN, TENDER and LOCAL YEARLING BEEF.

NO added chemicals, NO antibiotics, NO hormone growth promotants,
NO added colourings, water or preservatives

WE SELL

- OUR POPULAR 17Kg MEAT PACKS for \$200.00
delivered to your door
(This gives you the ability to try each cut of meat from a side but
in a more convenient storage size)
- SIDES of BEEF @ \$7.50 per KG
(Average side weighs 100kg = approx.. \$750.00)
- LIVE CATTLE SALES — We also sell proven breeders who are
quiet, easy going cattle either commercial or stud quality.
Great to keep the grass down, why not produce your own beef?

Ring Sarah 0402 099 106 or John 0427 131 018
Or Email us at jpopow@senet.com.au

One Tree Hill PHARMACY

Pharmacy Health Vitamin C 500mg Tablets 300

\$12.99!!!

Boost your
Immunity this
Winter



CHECK OUR PRESCRIPTION PRICES TOO!

(LOWEST PRESCRIPTION PRICES GUARANTEED)

Opening Hours:

Mon – Fri 1:30pm – 5:30pm

Ph: 8280 7890

Shop 3 (Next to Fodder Store),

Black Top Road, One Tree Hill, SA, 5114

Email: kersbrookpharmacy@gmail.com

NCPS INDUSTRIAL

**Pumps, Generators, Hose & Fittings
Servicing the One Tree Hill Area**



Present this
advertisement for
15% off
recommended
retail price on
DAVEY household
pressure, sump &
pool pumps also
MEDO septic air
blowers

DEPEND ON
DAVEY
WATER PRODUCTS



U2, 1445 Main North Rd,
Para Hills West S.A. 5096
Ph: 8285 2344

Email: sales@ncpsindustrial.com.au
Web: www.ncpsindustrial.com.au
(Opposite Bunnings Parafield)

Birdwood Pump & Irrigation Services

Now Servicing the One Tree Hill area

**We Specialize in
Agricultural Bores, Pumps & Irrigation
All Makes & Models Available**

Call David 0438 685 089



Agents for Grundfos Sales

Preposterous - Meaning of the Word

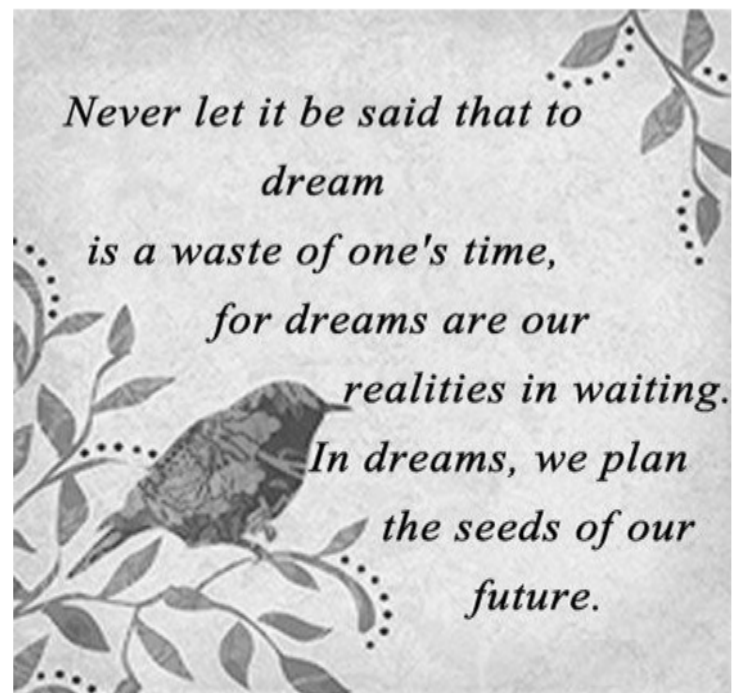
Meaning: to chiefly mean absurd or ridiculous.

Origin: This word packs in enough to be counted as virtually a phrase. We may go through like using 'Preposterous' as a synonym for 'absurd, laughable, ridiculous' without giving any thought to why it means that. By breaking it into its constituent parts it becomes clear that its meaning can be read quite literally, that is, it describes something in which the 'pre' (front) has become the 'post' (rear). So, 'preposterous' things or, more usually animals, were those which were contrary to nature; having their parts in the wrong order.

A mediaeval belief in the existence of monstrous or fabulous animals was common place, indeed almost universal. To the usual collection of dragons, griffins, mermaids, unicorns and the like we can also add animals that had their heads and tails reversed and those which had heads at both ends, for example the Amphisbaena.

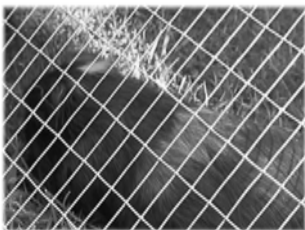
The use of 'preposterous' to refer to things which were wrong or inverted dates from 1533, when it was so used several times in a translation of Erasmus Enchiridion Militis Chrisiani. The use of the term to refer specifically to 'wrong' animals was in use by at least 1661, when it appeared in Joseph Glanvill's The Vanity of Dogmatizing:

"Thus our Eyes, like the preposterous Animal's, are behind us."



Pets can bring a lot of joy to one's life, but they can also be expensive to look after. Just like any other member of the family, they need food, shelter and lots of attention.

Here are a few tips for looking after your pet and tips on how to keep the costs down for you.



Food: If you have a lawn, then you can feed your pets for free on grass, and you save money on not needing to buy a lawn mower! Make sure to move your pets around the lawn so that they do not eat away an entire patch down to the root. If you don't have a lawn then ask your neighbours if you can have their grass clippings. Please keep in mind that clippings are only good for 1 day as they begin to give off gasses which could be bad for your pets.

Instead of buying lots of fresh fruit and vegetables from the supermarket, you could grow your own or collect the tree-falls from your garden or ask neighbours.

Hay and wood shavings can be expensive, but you can use less if you combine it with shredded paper. We all need to shred our letters anyway and this saves them going in to the bin. Newspapers are the best way to line a hutch, maybe your neighbours can help you out if you run short.

Fun: Small rodents need to gnaw on things to keep their teeth down, and it also stops them from getting bored. You could buy gnaw toys for them, but a much cheaper way is to put old planks of wood (from a broken fence, for example) or sticks and branches into their hutch for them to chew on. Small animals love to hide away. Guinea pigs love sitting inside flower pots or snuggling together under cardboard boxes.



Perhaps you can teach your pet to sit in a car like the Guinea Pig in the picture, it would take a lot of patience but you'll



Never get tired of doing little things for others
sometimes those little things occupy the biggest
part of their hearts.

The One Tree Hill Progress Association is having their Annual General Meeting on the 8th May. The committee is chosen to lead you through the next year.

If you are interested in what is happening around your town why not come along to the Progress meeting and be involved in your community.

New members are always welcomed. The normal once a month meeting is on the 2nd Thursday of each month at 7.30pm at the One Tree Hill Institute.

Humbug Scrub Wildlife Sanctuary Family Fun Day

When was the last time you visited Humbug Scrub Wildlife Sanctuary?

For over 1000 people, it was Easter Monday 2014.

Driving down the 600 metres of track to the central area, visitors passed roaming emus. After parking and dragging themselves past the ice cream van, they strolled around stalls providing face painting, sewn souvenirs, pottery, cakes, sun catchers, lucky dips, bric-a-brac, books, native plants, jams and preserves. The "Find the snail" game was in full swing and there was a "hunt the animal" game with Easter eggs as prizes. By 10:00, the smell from the barbecue had people buying a sausage.

Buying a cup of "Laucke's Roo Food" or "Laucke's Duck Pellets", people were able to hand feed animals. Emus, Western Grey Kangaroos, Swamp Wallabies, Pacific Black Ducks, Cape Barren Geese, one Red Kangaroo (named Selila) and various galahs and cockatoos lined up for the hand outs. Unfortunately, there were so many people (and so much food) that many of the animals decided they had had enough and about midday, disappeared into the outlying 80 acres for some peace to sleep it off.

Crossing the bridge near "Lingalonga" (our barbecue area) people followed signs to Annabelle the Koala. Annabelle has been injured and cannot be released back to the wild. Her son, who arrived with her, has grown and been released. Annabelle's chief carer was on hand to help people get close to her, sometimes patting, sometimes holding.

After a comfortable walk to Duck Lake, and for some, the

longer walk to Chowilla Lake (where you can hear birds and little else), most people came back to Lingalonga for lunch, selecting from sausages, steak sandwiches, potatoes, and of course, cakes, drinks and a return trip to the ice cream van. Sitting under pines that were planted about 1915, or gums that are older, they could watch the many wild birds that frequent the area or talk to the rescued birds that, between them, have quite a repertoire of English.

The Sanctuary runs two Family Days; the second is on Monday of the October Long Weekend. If the crowds (and extra entertainment) do not appeal to you, come along any other day. It is open every day except Good Friday and Christmas for walking around and peacefully watching. Fees apply. The Family Days are the chief fund-raiser for housekeeping like insurance and maintenance.

Established in 1905 by Thomas Paine Bellchambers, the sanctuary is a registered charity and all funds raised go to maintaining the property and animals.

Special thanks must go to the major sponsors: One Tree Hill Fodder & Rural Supplies, Laucke Mills Stockfeed, and KJR Designs & Artwork. We cannot forget all the other small businesses who helped make the day a success: One Tree Hill General Store, One Tree Hill Post Office & Gifts, Bunyip Print & Copy, Craigmores Bakery, and the 30 businesses who provided window or counter space to advertise the event.

We cannot forget the stall holders (who all said they want to come back next time) and most especially the volunteers without whom the day could not have happened.

Photos of the day appear on page 16.



Humbug Scrub is open daily from 10am until 5.00pm.

Admission
Adults \$5, Children \$2.
Family Pass \$10.
Yearly Pass \$20



Pictured above: Feeding the Ducks and patting Swamp Wallabys at the Open Day along with girls who had face painting done.

Humbug Scrub
Wildlife Sanctuary



The OTH Institute is a great venue for an Engagement, Wedding, Special Birthday, Naming Day or other. Competitive Rates.

Check us out on the web:
www.onetreehillhall.com.au

Ph: 8280 0000 or Email: oth.hall@bigpond.com

* Wipe the inside of the fridge and freezer using a damp cloth sprinkled with Bi-Carb. Leave on for a few minutes then wipe off using clean water. This will remove stains, kill bacteria and deodorize the fridge shelves and cabinets.

* To remove grease-stains from material, work in a small amount of polyunsaturated margarine, then wash out with soap and water. Use the same method for removing grease from hands. Apply some hand cream afterwards to replenish skin moisture.

HANDY HINTS AROUND THE HOME

* To re-use a paint roller tray or to keep a new one clean, simply place the tray into a plastic supermarket bag or small garbage bin liner. Pour in the paint and the bag will sink into the shape of the tray. When you've finished, take off the bag and dispose of it, leaving your tray ready to use next time.

Now I find out about this hint after the dreaded clean up when I finish painting!

* Stop the tears flowing when peeling onions, especially with large quantities for pickles etc. Peel and cut onions in half, place in a plastic bag in a single layer and place in the freezer. When frozen (usually a few hours, depending on quantity), remove from freezer, leave for a short time so they are not too hard, then chop or slice with a sharp knife.

* For a quick and luscious icing, place a layer of chocolate mint patties over a freshly baked cake while it is still hot and leave until the mints soften. Spread with a spatula. For a variation, try flavours such as orange or rum patties.

* When working in the garden, general cleaning around the house or doing stuff on the car and in the garage, dirt and grease can get under your finger nails and be really hard to remove. Before tackling any of this dirty work, rake your fingernails over a bar of soap to fill the gaps. After the job, brush hands in the usual way, then scrub out the soap with a brush.

The Northern Foot Clinic

Heel Pain, Sports Medicine, Aching Feet, Children's Feet
Ingrown Toenails, Plantar Warts, Orthotic therapy, Mobilisation

Pain relief today and prevention for your future

* 109 Haydown Rd, Elizabeth Vale (onsite parking)

* 16 Adelaide Road, Gawler (onsite parking)

DVA, Hicaps. Medicare (GP approved only)

8287 3888

PROPEST 1800 24 22 21
management services

**We Service any Pest
No Problem!**



* Termite/White Ant Removal

* Termite Baiting Systems

* General Pest Control

* European Wasp & Bee Removal

* Free Site Assessment

* Existing and Pre Purchase Property Inspections

www.propestcontrol.com.au

PO Box 193

One Tree Hill, SA 5114

AS/NZS ISO 9001:2008
QUALITY CERTIFIED COMPANY



Olympic Boring Contractors Pty.Ltd DRILLING WATER WELLS



**Irrigation, Stock and Domestic
Bores, Specialized Machinery to
Drill up to 250m with Mud,
Air & Auger**

Call Michael Ferraro - Resident of OTH for 27 Years

Ph: 0408 847 060

Or: 8380 9474

COMPLETE Equipment & Trailer HIRE

KANGA LOADERS - BOBCATS - EXCAVATORS

TRAILERS ALL TYPES INCLUDING TIPPERS

HORSE FLOATS

TRUCKS & TRADIE GEAR



EARTH MOVING REQUIREMENTS

* CARTING * SPREADING * RUBBISH REMOVAL

Phone: Jason

on 0418 823 287

Email: completehire1@bigpond.com

Web: www.hiregawler.com.au

Lot 10 Paxton Street, Willaston

ABN: 51 008 178 979

**WE CAN
DELIVER!**

ecomponding chemist
precision medicine for you, your family and pet

**One Tree Hill
PHARMACY**

Shop 3 (Next to Fodder Store),
9 Black Top Road, One Tree Hill

**Different Pain requires different
treatment. Is your pain related to....**

- ♦ Inflammation
- ♦ Sciatica
- ♦ Arthritis
- ♦ Nerve
- ♦ Muscle Aches
- ♦ Or a combination?



**We can compound a solution to target
your pain at the site of pain**

Web: www.ecompondingchemist.com.au

Email: info@ecompondingchemist.com.au

Opening Hours:

Mon - Fri 1:30pm - 5:30pm

8280 7890



All Real Estate Agents
are not the same

What do you deserve?

- Free Marketing ☐
- No Administration Fees ☐
- No Sale NO Charge ☐
- Highest Possible Price ☐
- Teamwork (multiple agents working for you) ☐
- Registered Buyers in waiting ☐
- Honesty ☐
- All of the Above ☒

It's Your Choice!

Country Estates



Let us show you how to get
the most for your property.



Lynton Turner



Les Preston



Ali Burdett



Mark Watkins

One Tree Hill

\$599,000-
\$619,000

Coming Soon



One Tree Hill

4.45ha (11 acres). Magnificent lifestyle offering with quality large family home of up to 5 bedrooms. Lush gardens, bore, dam, winter creek, beautiful scenic land & views.

Ph 8280 0033

Shop 2 Black Top Road One Tree Hill

RLA 100925

TELESIGNAL ANTENNA

SYSTEMS Pty Ltd

Government Endorsed TV

Antenna Installer

- Digital TV Antenna Installations
- Extra TV Points
- Digital Box Set Up & Tuning
- Tune & Set up TV, Video, DVD's & Blu-ray
- Pay TV Cabling
- Watch Foxtel in any room with a Pay TV System

Call for a FREE Quote Today, Local Resident

Ph: Ian George 0417 809 403

Email: telesign@bigpond.net.au

Website: www.telesignal.com.au

TIMMEL PLUMBING SERVICES

CALL A LOCAL

DOMESTIC - COMMERCIAL - INDUSTRIAL

- General Plumbing & Maintenance
- Hot Water Repairs & Replacements
- Drain Cleaning & Camera Inspection
- All Septic Tank Installations
- We can also do * Retaining Walls
- Concrete Work
- Earthworks



Call Tim

0419 550 497

Lic. BLD179279

COMMUNITY DIRECTORY

Hall Hire Ph: 8280 0000 or 0459 105 045

Council Member	Joe Federico	0417 016 164
C/Member & JP	Andrew Craig	0417 016 160
Cricket Club	Brian Walter	0418 815 047
Friends of Para Wirra	Patsy Johnson	8280 7279
Home Assist	Playford Council	8256 0355
Market Coordinator	Bev Campbell	0448 208 338
Nth Hills Pony Club	Sharon Xanthopoulos	0401 214 950
OTH Grapevine	Editorial Team	8280 7095
OTH Progress Ass	Secretary	8280 7095
OTH Playgroup	Alex	0417 889 783
OTH Playgroup	Kylie	0417 140 574
OTH Primary School	Front Desk	8280 7027
Playford Band	Ivor McLatchie	8280 7214
Scout Group	Darryl	8254 9650 or 0432 624 697
Senior Citizens	Lance Walter	8280 7259
Soccer Club Registrar	Tamra	0414 911 321
Tennis Club	Gary	8280 7067 or 0415 399 658
Walking Club (Walkie Talkies)	Helen	8280 7035

Mother's Day Biscuit/Cupcakes

This recipe makes approximately 15-25.

Cooking time 15-20 minutes.

Set oven to 160°C

Ingredients:

125g unsalted butter, softened

150g caster sugar

Pinch of salt

Few drops of vanilla essence

1 medium egg

250g plain flour



You will also need food colourings for decoration, icing sugar and decorations plus piping bag and writing piping tubes.

Method: Cream together the butter, sugar, salt and vanilla until the mixture is light and fluffy. Beat in the egg and then the flour until the mixture binds together to form a dough. Roll the dough out on a lightly floured surface to about 3-4mm and use cutters to cut out shapes.

Place cut outs onto lined baking trays, chill for 10-15mins. Place in oven and cook for 15-20mins or until the cookies start to turn golden at the edges.

Leave the cookies to cool for a few minutes and then transfer to a wire rack. Make up icing sugar and ice your biscuits as they are in the picture above.

Hint: Smarties or M&M's make a great cherry for the top of the cake. Have fun, present to Mum on her special day May 11th to have with her cuppa.

One Tree Hill Junior Baker Competition

Theme for MAY is Mother's Day decorated cupcakes



Conditions of entry: The item of cookery to be submitted along with size and quantity will be published in the Grapevine in the month prior to the One Tree Hill market day. One entry per person.

Entries are to be delivered to the One Tree Hill Junior Baker's table at the market between 9am and 9.30am.

You will be required to make 3 identical items for the theme of the month. Paper plates will be supplied and entry cards including entry number will be attached. Judging will commence at 9.30am.

There are 2 age categories: 1) Ages 5 to 8 years 2) Ages 9 to 13 years.

Prizes for each category are 1st: Blue Ribbon and \$15.00 2nd: Red Ribbon and \$10.00 3rd: Green Ribbon and \$5.00. Entries can be collected along with prizes by 1.00pm on the day.



How to enter: You will need to email (oth.grapevine@bigpond.com) or complete the entry form and mail to One Tree Hill Progress Association, PO Box 196 One Tree Hill SA 5114. Or drop it into the General Store. You must include your name, age and phone number. Registration for May must be completed before Thursday 1st May for the May Competition. SPECIAL NOTE: Parents, if your child has sport on Saturday, they can still enter, simply drop off the items before you go, there is always someone there at 8.00am or you can phone and arrange drop off on the Friday night.

NAME

AGE

CONTACT NUMBER



Olympic Boring Contractors Pty. Ltd Pump Sales & Service



**Specializing in Design & Installation
of Submersible Pumps**

Supply & Installation of Domestic Pumps,

Agents for Grundfos and Lowara

Sales & Pump Service

Over 35 Years of Experience

Call Michael Ferraro

OTH Resident for 27 Years

Ph: 8380 9474

0408 847 060



Local Electrician

All Electrical Work

- Sheds and Carports
- Switchboard alterations and upgrades
- Bores and Pumps
- Security Lighting
- After Hours Call Out Service
- Friendly, Reliable Service
- FREE Quotes

Call Cosi Puccini on

0421 773 673

Email: cosipuccini@bigpond.com

Lic-PGE 177700

ABN-94 535 175 644

DOMESTIC

COMMERCIAL

INDUSTRIAL



EVERY Car, EVERY Part, EVERY Day.

**BEST PRICE
EVERYDAY!**

IF YOU FIND A LOWER PRICE ON AN
IDENTICAL ITEM, WE'LL BEAT IT BY **10%!**

**30 years on, and we're still
proudly SA owned & operated.**



**SIGN UP AND BECOME A SPRINT CLUB VIP MEMBER
TO RECEIVE A FREE VIP KEYRING + PROMOTIONS***

SPRINT VIP - Receive exclusive VIP offers & product promotional!
SPECIAL PRICING - Receive 5% off purchase* at Sprints when you show your keyring
CATALOGUE RELEASES - Preview upcoming catalogue releases via our members area
MEMBER PROMOTIONS - Be the first to know about sponsored events & venues.

For your nearest store visit www.sprintautoparts.com.au

*Rose Creek Weddings
„One Tree Hill“*

Your Celebrant

Sharon Good

Registered Marriage Celebrant

*Working with couples to ensure that
their day reflects their personalities*

Phone: 0488 091 260

Email:

goodlaw2@bigpond.com



ABN: 43 475 342 076

AIR CONDITIONING

SEYMOUR HEATING & COOLING

Installations of Ducted Reverse
Cycle, Ducted Evaporative,
Ducted Gas, Combustion Heaters
and Servicing



20 Years Experience
For a FREE Quote call
Wayne on 0411 410 889

AUTO REPAIRS

BLACKTOP AUTO REPAIRS & TYRE CENTRE

GENERAL
ENGINEERING
REPAIRS
4-Wheel Drives
All Mechanical Repairs
Log Book Servicing
Phone: 8280 7255
or John on Mobile
0466 936 135

BEAUTY

BEST DRESSED MOBILE TAN

Vani T
Naked Tan
St Tropez
Call Lea

0411 416 011

www.bestdressed.net.au

Conditions May Apply

ENJO



For product
enquiries,
demonstrations
and all your
ENJO needs
contact
Beni Hite
Ph: 8280 7815 or
0403 763 826

EXERCISE/WELLBEING

CHIBALL

A combination of
Tai Chi, Qi Gong, Dance,
Yoga, Pilates, Deep
Relaxation & Meditation.
All in an hour of
rejuvenating exercise to
music for harmony,
balance and well being.
Mild exercise for any
fitness level,
age & injuries.
Monday Night 6-7.00pm
OTH Institute. \$10 per
lesson, bring yoga mat.
Ring Ann: 8280 7354

GARDENING

Geoff Jacobson for all
your gardening needs
* Lawn Mowing
* Tree Lopping
* New Lawns
* Fertilising
* Weed Control
* Pruning
* Rubbish Removal
* Landscaping
* Shed Cleanouts
Ph: 131 546 or
M: 0407 733 832

MAINTENANCE

WARNER'S HOME MAINTENANCE

* Gardening
* Odd Jobs
* Painting
* Pruning
* Gutter Cleaning
* Basic Home
Maintenance

Call Pete:
0433 619 108

GARDENING

NEED HELP WITH YOUR GARDEN OR PADDOCKS?

* General household maintenance
* Landscaping
* Weeding and Pruning
* Lawn Mowing & Care
* Large areas or Paddocks mowed or slashed
* Pest Control



MBJ GARDENING & OUTDOOR REPAIRS/MAINTENANCE

ABN: 77934460516

Call Michael on 0437 923 277 or

Email: bershead@hotmail.com

ALL TYPES OF WORK UNDERTAKEN!

PLANTS

DEALTRY NATIVE PLANTS WHOLESALE

Trevilla Road, (Off
Frank Barker Road
OPEN 1st Two
Weekends each
Month 10am-4pm
Plants from \$1.00
Phone for directions
Ph: 8280 7079 or
0402 010 877
Gift Vouchers Available

PEST CONTROL

BEST PEST CONTROL

* Spiders
* Earwigs
* Millipedes
* Bees
* Ants
* Flies
* Termites
Call Paul on
0418 893 411

VOLUNTEERS WANTED

Friends of Para Wirra
Volunteers of the Park
meet twice a month
every 1st Wednesday
and 3rd Saturday at
9.00am at Park Office
(via main entrance off
Humbug Scrub Road)
If you love the bush and
would like to join our
happy crew, please
contact us between
9.00am & 9.00pm
any day
Ph: 8280 7279

ADVERTISING RATES FOR 2014 Rates THE GRAPEVINE

Colour	Eighth Page	\$35
	Quarter Page	\$70
	Half Page	\$175
	Full Page	\$375
Black and White:	Eighth Page	\$25
	Quarter Page	\$50
	Half Page	\$120
	Full Page	\$275

Classified Ads: Just \$10.00

These are great for promoting your Business, Garage Sale
or Items for Sale. All ads need to be in by the deadline
which is shown on the front page.

Phone: 8280 7095 or

Email: oth.grapevine@bigpond.com.au

To advertise in the Grapevine you must be an OTH
resident or have a business in the town.
PLEASE NOTE ALL ADVERTISING IS TO BE PAID BY
PUBLICATION DATE UNLESS OTHER ARRANGEMENTS
HAVE BEEN MADE.

Playford Council Contact Details

24 hour Emergency & Lost/found dogs

8256 0333

General Enquiries and Burning Permits (seasonal) 8256 0333 Email: playford@playford.sa.gov.au

Libraries: Elizabeth 8256 0334

Munno Para 8254 4600

When telephoning council with a request please remember to get a Customer Registration Number (CRN) to ensure registration and easy identification of your communication.

You can also phone or email your local Councillors.

Joe Federico Ph: 0417 016 164

Email: jfederico@internode.on.net

Andrew Craig Ph: 0417 016 160

Email: adcraig@ihug.com.au



Community Notice Board

Do you have an upcoming Community event or a special announcement that you would like printed on this page? Please keep notices as brief as possible.

Email or call with your details. Email: oth.grapevine@bigpond.com Phone: 8280 7095

Please note deadline date on the front cover for each edition.



PLAYGROUP AT THE INSTITUTE

MONDAYS & WEDNESDAYS

Vacancies are available for
babies to school age children
at the OTH Institute.

Contact

Alex on 0417 889 783 or

Kylie on 0417 140 574

9.30am until 11.30am



MOBILE LIBRARY

A reminder to all residents
that the Playford Council
Mobile Library Service now comes to
One Tree Hill on Friday afternoon,
once a fortnight.

The van parks outside of the Institute
opposite the shops from
3.00pm - 4.00pm.

MAY visiting dates for the Mobile
Library are the
2nd, 16th and 30th May.



2,000km Bike Ride for Autism Awareness

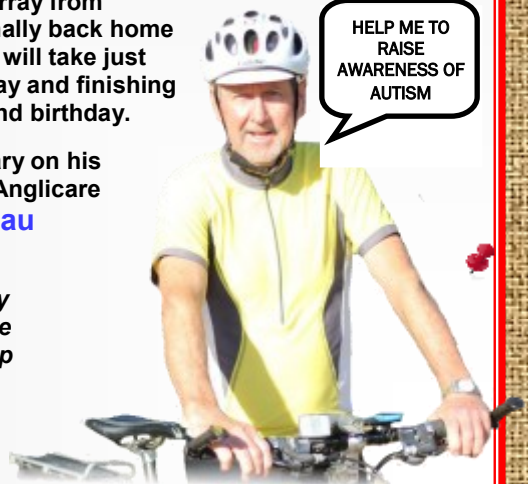
One Tree Hill grandfather and keen cyclist, Gary Ferguson, is about to "Take to the Road" in a quest to increase community awareness of autism and raise funds for Anglicare's Autism Specific Early Learning Centre at Daphne Street, Prospect.

Gary has two grandchildren who have Autism Spectrum Disorder (ASD), which is a disability that affects about 1 in 70 children. Boys are much more likely to be diagnosed with ASD, and children with the disorder have difficulties with social communication/interaction and exhibit restricted repetitive patterns of behaviour, interests or activities. ASD can't be cured but it can be managed effectively.

Gary is riding 2000km around SA. His route will include the York Peninsula, the mid and far North, along the Murray from Morgan to Tailem Bend and then finally back home via the Fleurieu Peninsula. The ride will take just over a month, starting on the 4th May and finishing on the 7th June, which is Gary's 72nd birthday.

Anybody who wishes to support Gary on his quest can make a donation via the Anglicare website www.anglicare-sa.org.au under 'Gary's Ride'.

Good luck Gary, have a safe journey around South Australia and we hope that you raise a huge amount to help raise awareness of Autism.



NEXT OTH COUNTRY MARKET

SATURDAY 3rd May. 8.30am until 1.00pm at the OTH Institute, Black Top Road, One Tree Hill.

Great variety of crafts, home cooking, sausage sizzle, Russian Cooking, coffee/tea, plants, fresh fruit and veg, books, craft supplies, wine bric-a-brac and much more.

MOTHER'S DAY RAFFLE available from the
Uniting Church Stall. \$2.00 ticket, drawn at
12noon on 3rd May at the market.

For stall enquiries please call Bev
on 0448 208 338 or
Email oth.market@bigpond.com



OTH PROGRESS GENERAL MEETING followed by the ANNUAL GENERAL MEETING

Thursday 8th MAY 7.30pm.

Venue: One Tree Hill Institute, Black Top Road, One Tree Hill.

We would love to see you there, Progress is at present a small group but with your help we can grow and make OTH an even better place to live.

