

One tree hill grapevine



This is a free community Newsletter.
However a Gold Coin Donation to the Piggy Bank in General Store,
Post Office or Fodder Store would be appreciated.



July - Volume 35 - Edition 6- 2012

Deadline for the August Edition is Friday 27th July 2012

Local Lad Makes it to the A-League



Young Craig Goodwin has always loved Soccer and now he has made it into the A-League and plays for Newcastle Jets.

Craig moved from Craigmores with his family to OTH in 2001. Born in 1991 he first played Football (soccer) for Munno Para City Soccer Club, first as a 4 year old in the under 6's and progressed to the under 12's team. Craig attended St Thomas More's at Elizabeth Park, then went to Gleeson College in Golden Grove to finish his schooling. His parents, Tony and Jenni say that he always had a ball at his feet. Even as a 2 year old his Aunts and Uncles would laugh at the fact that he was never without a ball in his hands or at his feet. His parents even set up a 3/4 goal at the side of the house where Craig and his brother Daniel spent endless hours practising and shooting for goals. The poor fences used to get a pounding and Jenni complained about her plants that were battered. Craig also used to walk to McGilp Oval with either his brother, cousins or friends and spend countless hours practising.

Craig was involved in the SAPSASA Elizabeth championship team and ESJSA representative sides in his early years with the state under 13 and 14 sides. Craig has had his share of disappointments, he just missed out on a Crystal Palace academy spot in England as he was 4 months too old for their under 15's side. He had a Football apprenticeship with Inverness Caledonian Thistles under 19 squad in the Scottish Premier League, and because their senior team were relegated on the last game of the season the board culled the squad to save money, voiding his contract. Craig got the bad news about 36 hours before he was due to leave for the UK.

Craig trialled for the Adelaide United's youth team and failed to get a spot even after winning radio station 5RYI's rising star award for the Super League playing for Adelaide Croatia Raiders and earning an apprenticeship in the UK. Again the following year he failed to get a spot in Adelaide United's youth team even after winning Raiders rising star award and having a stellar year in the Super League competition. It was at this point Craig was contacted by a former Australian Institute of Sport Coach and new Victorian Premier League Coach for the 'Oakleigh Cannon's Arthur Papas. *Continued page 3*

EMERGENCY NUMBERS

Police: 131 444

Ambulance & Other Emergencies: 000

Country Fire Service: 000

Station: (When manned) 8280 7412

Hospital: 8182 9000

000

General Business: 8280 7055

Bushfire Info Hotline (24hr): 1300 362 361



www.cfs.org.au

From the Desk



Winter is really upon us in a big way isn't it? We again have some warnings from the CFS to take care on the road in the wet slippery conditions. All we need to do is slow down and drive to the weather conditions.

On the front page we have featured a local lad who has done really well and is playing for the Newcastle Jets, it's amazing how many young people we have that have achieved so much with their sport. We hope you enjoy reading about Craig and wish him well in the future.

On page 3 we have an article featuring the One Tree Hill Primary School and the introduction to the more modern Playford Council web site. Don't forget to visit the site.

We are turning back time on page 7 with a story from 100 years ago, Alexander Kirk was certainly a very fit and active man in his life.

Mailing Address: P.O Box 196, One Tree Hill, 5114

Most of our regular articles are in including the horse article that local identity Julie Buttery writes for us each month. We also have the 2nd part of the use of chainsaws, we thank Mark from the Fodder Store for this. Hopefully you have picked up all the safety tips that Mark has mentioned.

The kids should enjoy the puzzles on page 10, with school holidays in full swing at least there will be something to do on a wet day.

There is no Progress Association Report because the group had a break last month, don't forget the next meeting is on 12th July at 7.30 at the Institute.

You can view the Grapevine on line, just go to www.onetreehillhall.com.au and go to "About Us" and you will find the editions at the bottom of the page.

Until next month, the Grapevine Team.

Phone: 8280 7095 Email: oth.grapevine@bigpond.com

Councillor's Report by Joe Federico

The Councils Long Term Financial Plan and Draft Annual Business Plan 2012/13 were out for public consultation. A Community Cafe was held at the Playford Civic Centre, Great Hall on Wednesday the 6th Of June, between the hours of 7.00 to 8.00pm. Unfortunately there were more elected members and Council staff members present than members of the public. This made it hard to get a clear understanding of where the community stood on any issue including rates. On Tuesday the 12 of June a public hearing was held in relation to the Draft Plan and rates increase with only four people attending and speaking. One person was from Councils Governance committee endorsing the Plan the others were a past councillor and two ratepayers with specific issues in relation to their needs. On the 19 June a public meeting was held at the Council Chambers in relation to the mandatory Section 30 review of the cities Development Plan with only one person making a submission. I had talked to many ratepayers at the Country Market and other venues encouraging ratepayers to attend these meetings and have their say, unfortunately the attendances at all meetings were poor. By the time this edition is released Council will have set its rates and no doubt the Messenger Newspaper will have reported on the outcome.

I am still getting requests for action on the Kersbrook road intersection, as an elected member I cannot fund a roundabout at this intersection. I have lobbied Local, State and Federal Government for action and recommended to callers to personally approach the government bodies to add weight to this cause.

I have a letter from the Hon Jennifer Rankine MP to Mr Nick Champion MP in response to one ratepayer who followed my advice and went direct to Mr Champion MP suggesting that work is being undertaken by DPTI who are investigating the possibility of a staggered intersection or a roundabout at this intersection with a view to some Black Spot Funding in 2013 /14. I can only continue to suggest that people maintain a concentrated connection with these MP's to ensure that the intersection issues are not forgotten.

If you have any concerns or issues with or about our City, please in the first instance phone 82560333 and or **send your e-mails to playford@playford.sa.gov.au** and cc to **crjfederico@playford.sa.gov.au** this will ensure that council sees your concerns and then forwards your e-mails on to me. If you are uncomfortable with council viewing your comments then please e-mail me at **jfederico@internode.on.net** if subsequent to that approach you do not receive a timely or satisfactory result please feel free to contact me personally. However I cannot guarantee that I will be able to get any better results but will at least have council reassess their position and provide an explanation as to their resolve and in some cases if not most, reach a compromise that is acceptable to all parties concerned. Council's 24 hour phone number is 82560333 for all your enquires and or requests. Remember to get a Customer Reference Number (CRS) to ensure registration and easy identification of your communication.

Cr Joe Federico Phone: 0417 016 164

Fax: 8280 7963

Full Council details on Page 19



Read the Grapevine on line

If you haven't had a chance to see the Grapevine on line please go to the site:

www.onetreehillhall.com.au and go to "About Us", scroll to the bottom of the page

where you will be able to select the one line edition of the Grapevine.

This is a great way to share local news with friends and family who can't get a hard copy of the Grapevine. Happy reading.

This newsletter is published by the One Tree Hill Progress Association. Email: oth.progress@bigpond.com Ph: 8280 7095

The views expressed in this newsletter are not necessarily those of the One Tree Hill Progress Association.

Its purpose is to share local news, views and events. Advertisers are responsible for the accuracy of the content of their advertisement.

Continued....Craig only trialed for 3 other sessions and was signed on the spot. He moved to Melbourne to live and play for Oakleigh Cannons. He had many highlights playing for them including scoring the winning goal at the 91st minute mark (coming off the bench just 4 minutes earlier) to knock power house team South Melbourne out of the finals. He then scored the winning penalty to put Oakleigh into their first ever Grand Final.

That season (last year) he caught the eye of John Aloisi, former Australian International legend and new Melbourne Heart Youth Team coach. Craig was the first player chosen for the new Melbourne Heart Youth Team. After many great performances for the youth team Craig was selected for his senior debut on the 4th February 2012 at AAMI Stadium in Melbourne in front of nearly 27,000 fans and was even marking Harry Kewell in that match. Craig got 'Man of the Match' in his first game. On Foxtel and The World game show, it was described as possibly the best A-League/NSL debut ever.

Craig was also chosen for Australia's under 23's Olyroos team to play against Iraq on 14th March 2012 after being so impressive in his Melbourne Heart games.

Craig was signed up by the Newcastle Jets in May this year. If you would like to follow his career you can look him up on the following websites.

<http://www.footballaustralia.com.au/newcastlejets/news-display/Jets-secure-Neville-and-Goodwin/47214>

<http://www.monashweekly.com.au/news/local/sport/football-soccer/former-cannons-star-blasts-onto-a-league-scene/2445227.aspx>

<http://www.smh.com.au/sport/a-league/goodwin-another-find-for-heart-20120205-1qzv4.html>

<http://www.heraldsun.com.au/news/craig-goodwin-almost-steals-show-in-stunning-debut-for-melbourne-heart/story-e6frf7jo-1226262828701>

We wish you well with Soccer Craig, we're sure a lot of locals will be looking out for you and following your career.



Launch of new look Playford website

Sign up for E-News via the website and you might win an iPad!

Playford Council has updated its website with a new modern look and design that is also more user-friendly and easier to navigate. The new look Playford website, released on Wednesday 23rd May, 2012 features updated Council information under five panel headings, LIVE, WORK, PLAY, BUILD, CONNECT.

Playford Mayor, Glenn Docherty said that the new look website will make it easier to access the latest news and find out what is happening in Playford. "People want up to date information at their fingertips, so the new look website makes it easier and faster to find information about Playford Council."

To launch the website, the Mayor visited the One Tree Hill Primary School on the morning of Wednesday 23rd May introduce the new look to 20 school children aged from 5-12 years.

During his visit, Mayor Docherty also introduced the new 'Kids Zone' pages that highlight interesting fun and educational activities for children in Playford.

Playford Council is promoting the website to the community with a competition to encourage more people to visit the new look site. Community members can win one of 3 iPads sponsored by Datacom Systems SA by visiting the website and registering to receive Council news via email.

The site to visit is

www.playford.sa.gov.au



Alivia checking out the website



Kane, Chloe, Tristan, Mayor Glenn Docherty and Principal Sharyn Roberts.



Lucy and Kane





ONE TREE HILL GRAPEVINE CFS REPORT JULY 2012



Incident Report

Well again this month has proven roads in and around One Tree Hill can be dangerous. The weather at the time of writing this report is very wet and everybody needs to remain careful when driving around the area.

*The Brigade has attended a number of road crashes. The major cause was speed and risk taking in the wrong location. If everyone would reduce their **speed to suit the road conditions** and maintain at least a 2 second gap between vehicles when dry and 4 seconds in bad road conditions a lot less crashes would occur.*

Reminders

Do you live a few minutes away from the CFS Station?

THE CFS NEEDS YOU

It's that time of the year the CFS starts to accept new recruits into the service, for the next fire season. It can take up to 6 months to train an individual to become competent in fire ground techniques.

If you are over 18 years of age and like being a part of a team, why not consider joining us at the One Tree Hill Station. We train every Monday night at 7.30am. (Not including public holidays).

Please ensure you are familiar with the Council restrictions on lighting fires in your area. A pamphlet is available from the Playford Council explaining all of different requirements.

For general information please contact OTH Duty Phone on 8280 7055

You can also visit the CFS website or phone 1300 362 361

Warm up with - Bacon and Vegetable Soup

This is a really nice winter warmer and will become a family favourite - Preparation time 15 - 30 minutes.

Ingredients:

1 kg Smoked Bacon Hocks
2 Carrots
2 Large Potatoes
1 Sweet Potato
1 Parsnip
1 Large Onion
1 Swede
Salt and Pepper to taste



Method:

- 1: Peel and dice all vegetables
- 2: In a large stock pot place hocks and fill with approximately 4-5 cups of water
- 3: Place on medium heat and gently boil until meat on hocks is tender and starting to fall off the bone
- 4: Strain stock and put back on heat with vegetables
- 5: Remove meat from the bone. Discard bone and any fat
- 6: Place meat in with vegetables and stock and slowly cook until vegetables are tender
- 7: Add salt and pepper to taste.

Serve with crusty fresh bread rolls.

This is also suitable for a slow cooker.

Handy Hints for the Kitchen

Add a little milk to the onions while frying. This will help to retain the rich colour and prevent them from burning.

While frying mushrooms, add a tsp of lemon juice to the butter. This will prevent them from breaking.

Never add salt to mushrooms until after they have been cooked. Salt will draw out the moisture and make them tough.

While cutting hard boiled eggs, the yolk often tends to break. To avoid this dip the knife in cold water for a few seconds.

Rub your hands with some salt to remove the odour of garlic.

To ripen avocado's faster, place in a brown bag with a banana and keep at room temperature.

To soften pumpkin skin, to make it easier to remove the skin, microwave pumpkin for 1 minute.

DID YOU KNOW:

Many years ago in Scotland, a new game was invented. It was ruled 'Gentlemen OnlyLadies Forbidden' And thus the word GOLF entered into the English language.

Coco-Cola was originally green.

It is impossible to lick your elbow.

The first novel ever written on a typewriter was Tom Sawyer.

Each King in a deck of playing cards represents a great King from history:

Spades - King David, Hearts - King Charlemagne, Clubs - Alexander the Great and Diamonds - Julius Caesar.

If a statue in the park of a person on a horse has both front legs in the air, the person died in battle.

If the horse has one front leg in the air, the person died because of wounds received in battle. If the horse has all four legs on the ground, the person died of natural causes.

NOW YOU CAN STOP TRYING TO LICK YOUR ELBOW!



ONE TREE HILL FODDER & RURAL SUPPLIES

Shop 4/9 Black Top Road,

One Tree Hill

Ph: 8280 7680

Email: sales@onetreehillfodder.com

Hours of Trade:

Come in and
say hello to
Charlie!



Welcome to July in One Tree Hill

EXPECT

* Cold Weather * Lots of Rain * Fog * Longer Days of Sunlight

STAY WARM WITH THESE SPECIALS

Kleenheat 45kg cylinders for home \$99 delivered !!!!! - get the deal while it lasts

Kleenheat 9 and 8.5kg cylinders refilled on site for \$20

Keep the chooks happy while the grass grows - Golden Yolk or Xtra Egg 20kg 2 Bags for \$26

Growing Roses and weeding the lawn? Amgrow products featured on Better Homes in stock now. Cow Manure, Sugar Cane Mulch, Bin-Die, Multiweed

Want to give the garden, lawn or paddock a real boost with natural products? Neutrog Organic Rapid Raiser, Blade Runner, Seamungus, Bounce Back in large bags

Got too many weeds? Glyphosate kills all, or you can have selective herbicides that target specific weeds like Ivy, Artichoke Thistle, Horehound and Turnip Weed

Chainsaw cutting like the back of a butter knife? Mark will sharpen your chain professionally, bring chain only **\$15**

Need to move something? Trailer Hire - 6 by 4, 8 by 5, car trailer, 8 by 5 with sides from **\$33 to \$88**
24 hour only

Remember the taste of fresh clean rainwater? Rain water tanks by Maxiplus and Polymaster

Keeper the boot of your car clean. Bale Buddy wraps around hay to keep your purchase tidy **\$11.50**



Country Estates

RLA 100925

Special People Needed - \$77,000 Salary Plus Bonuses

Are you in
love with
your job?

Have you ever
thought to yourself
"I deserve
more than this"

- More Challenge
- More Excitement
- More Freedom

If so, you could be
ideally suited for

**A Career in
Real Estate**

For further information call -
Camile on Thursdays - 9:30am -11:00am

Providing the Highest Standard of Ethics & Service ~ www.countryestates.com.au

Hills & Country Specialists

Shop 1&2 Birdwood Plaza,
20 Shannon St, Birdwood SA 5234

PH 8568 5105

FREE

How to Get the
Highest Price
for Your Property



A book that could make
you **THOUSANDS** of
dollars.

Yours FREE

This book shows how to present your property for sale
and gives you tips on how to select, and work with, a
real estate agent.

Whether you are an experienced property
seller or a novice, this book could make you
THOUSANDS of dollars.

It's yours **FREE** - no charge or obligation.
Contact us now and we will send you a copy.

ONE TREE HILL from \$400,000 ONE TREE HILL \$645,000



**4 Allotments
to Choose From** 34, 34, 39 & 59 acres



SAMPSON FLAT \$690,000 HUMBURG SCRUB \$570,000



27 acres



4.87 acres

COMPLETE *Equipment & Trailer* HIRE

KANGA LOADERS - BOBCATS - EXCAVATORS

TRAILERS ALL TYPES INCLUDING TIPPERS

HORSE FLOATS

TRUCKS & TRADIE GEAR



EARTH MOVING REQUIREMENTS

* CARTING * SPREADING * RUBBISH REMOVAL

**WE CAN
DELIVER!**

Phone: Jason
on **0418 823 287**

Lot 10 Paxton Street, Willaston
ABN: 51 008 178 979

Birdwood Pump & Irrigation Services

Now Servicing the One Tree Hill area

We Specialize in
Agricultural Bores, Pumps & Irrigation
All Makes & Models Available

Call David
0438 685 089



Agents for Grundfos Sales

Horse Care — Definitions of Work

People often ask how much they should feed their horse now they are working them regularly. The questions must be: how hard is he working, and how frequently?

If you manage to ride one weekday for an hour and for a couple of hours each day of the weekend, he should not be working hard. If you expect him to perform all day on the weekend, e.g. at competition, then he must have fitness training several times during the week and that will be work.

The horse that does no more than an hour of walking per day is deemed to be “at rest”. Hay will provide all he needs except for some micronutrients.

If he is trotting for 30 minutes, perhaps during an hour of arena training, then he is in light work and requires a small concentrate feed.



If you have any horse query for Julie please email the Grapevine. Email: oth.grapevine@bigpond.com

Medium work cuts in when he is trotting and cantering for an hour a day, most days of the week.

Hard work is when he is trotting and cantering for more than 2 hours per day.

Feed according to the amount of work he has completed that day. If he did not work, then do not feed concentrates.

Of course, all advice on feeding must be tempered with the condition of the horse. If he is a ‘good doer’ then he needs little in the way of concentrates. If he is on the thin side, he may need concentrates even if he is not working, although it is best to make sure he has all the good quality hay he can use, as your first choice.

As our horses get less work on these cold, dark days, we should be increasing the quantity of hay available. It will help keep them warm and give them something to do (eat). Concentrates give them “fizz” without necessarily adding warmth to the body.



Taken from the Register Monday 29th July 1912—Page 6 100 Years Ago

The late Mr. Alexander Kirk, whose death occurred at his **residence, Kirkland's, near Golden Grove, on Friday** at the age of 93 years, was a most interesting personality. His long life was industrious and well-matured, and active habits clung to him in his closing years. On his 90th birthday Mr. Kirk walked five miles over the hills in company with a relative, and there was little doubt that the love of outdoor exercise was partly the secret of the **old colonist's remarkable vitality. He was born near Lockerby, Dumfriesshire, and was one of the oldest settlers in South Australia, having arrived in the ship Lysander in 1838. As a young man he was first employed in making the Old Port road and building the McLaren and Government wharfs at Port Adelaide. As there was no accommodation to be had, Mr. Kirk secured a half-tun cask, which served as a sleeping compartment during his engagement at the Port, and proved, on the whole, to be a convenient domicile, as it could be turned in any direction to suit the wind and weather. Mr. Kirk afterwards bought some cows and “squatted” in the bush at Golden Grove. As feed was plentiful, the milk yield was heavy. The “squatter,” having no horses, was forced to carry his butter on his shoulders to town for sale, a distance of 14 miles, and receive in exchange household necessities. No money was obtainable at that time. In 1844, after his marriage to Miss Smart, who had arrived by the ship Ariadne in 1839, Mr. Kirk bought one of the sections held by him for the remainder of his life and built his homestead. The greater part of the timber was sawn by hand from a large red gum tree, which stood near by, Mr. Kirk went to the Victorian diggings in 1851, and did well.**



Afterwards he carted copper between the Burra mines and Adelaide. During his subsequent residence near Golden Grove he interested himself in local affairs. For many years he was a member of the Tea Tree Gully District Council. He was also a prominent worker in connection with the local Presbyterian Church, having been Treasurer for 19 years, also a trustee.

The deceased enjoyed a game of cards, and sometimes used to walk seven or eight miles to witness sports. He had been known a few years since to cut down a tree for the sake of doing something energetic. He was one of the oldest subscribers to The Register in South Australia. Mrs. Kirk died about two years ago at the age of 83. The family consisted of 10 children, six of whom survive—Mr. Robert Kirk and Mr. A. C. Kirk, of Golden Grove; Mrs. Jones of Koolunga; Mrs. Jose of Adelaide; Mrs. Shillabeer and Mrs. J. Burden, of One Tree Hill. The deceased had 26 grandchildren and 25 great-grandchildren.

Some of Alexander's ancestors Vernon and sons, Alexander and Barry along with Vernon's deceased brother Raymond's sons Glenn and Garry still reside in and around the original Kirkland's. Thelma, Raymond's widow is now residing in Gawler, near her daughter Valmai.

Pictured on the right are Alexander and Clementina Kirk (nee Smart)

On the left is a photo taken around the original Kirkland's in 1908

Photos printed with kind permission from Thelma Kirk.





OUR VISION

"People of faith sharing God's love as we worship and serve in the community"

Sundays 10.00am

* Sunday Morning Service

* Sunday School - visiting children are welcome to participate

* SMYG (Sunday Morning Youth Group) - led by their Leader in their own room.

If you would like to attend our Service any time, you will be made very welcome.

Sunday, 12th August is our 145th Anniversary of the One Tree Hill Uniting Church. We will be celebrating with a very special Service and would love you to join us. Further details will be announced.

Fellowship - All Welcome

Meetings held on the 4th Wednesday of each month at 10am, beginning with Morning Tea and followed with a Talk by a Guest Speaker.

Programme

July 25th: FRBC Radio, Speaker Bruce Townsend, Shared Lunch.

August 22nd: Simon Byrant, renowned TV Chef cooking demonstration. Don't miss this opportunity, right on your doorstep to come and see Simon.

September 26th: Reverend Nita West will talk on her recent Papua New Guinea trip.

October 24th: Outing to Aviation Museum.

November 26th: Christmas break up and devotions.

Enquiries - Maureen Hill 8280 7368

Art - Through Da Vince's Eyes
3 Crosshill Rd, One Tree Hill, SA
PH: (08) 8280 7507
Email: davincesart@adam.com.au
Website: www.davince.com.au
Facebook: www.facebook.com/davincesart

Sunday July 15th 2012
9 am till 4.30 pm
MONSTER GARAGE SALE
& Sausage Sizzle

Baby and Children's Clothing Boys and Girls 0000 +
Ladies Clothes Size 8 to 24
Maternity Clothes Sizes 16—24
Mens Plus Size Clothing
Shoes, Handbags and Accessories
Children's Toys
Baby Furniture
Linen
Furniture
Knick Knacks
Electrical Goods

LT Studios
School Holiday
Cheerleading

Cheerleading is a fusion of dance and gymnastics. It involves jumps, tumbling, flexibility, strength, team work and most importantly FUN.

Do you like to move to music? LT Studios would love to encourage this passion whilst teaching basic cheerleading technique. We will use different movement based activities to practice technique and learn a dance to perform at the end of the workshop to our family and friends.

Who: Juniors: 5 - 9 years
Seniors: 10 - 16 years

Where: One Tree Hill Institute
Black Top Road, One Tree Hill

When: Monday 9th July
Juniors 9.30am - 12noon
Seniors 1.00pm - 3.30pm

How: For more information please contact
Lauren Robson on 0439 406 199 or
Email: lt.studios@yahoo.com.au
Or ask Pat at the OTH Institute



Nick Champion Federal MP - Member for Wakefield

Nick Champion is encouraging all local not-for-profit organisations in One Tree Hill to apply for funding under this year's Volunteer Grants initiative. "Volunteer Grants are a way of saying thanks to our local volunteers for their selfless work and commitment to making our communities stronger," Nick Champion said. "Organisations will be able to apply for grants between \$1,000 and \$5,000 to purchase much-needed equipment, contribute to fuel costs, transport costs for volunteers with disability who are unable to drive, provide training courses and background checks for volunteers. I recognise and value the important work of volunteers, who play a crucial role in our community, from supporting cultural and sporting events to preserving our environment and heritage" says Nick. The Volunteer Grants 2012 initiative will provide practical and tangible support to community organisations across Australia to support Volunteers and encourage more people to take up volunteering. Applications close at 5pm (AEST) on July 25th 2012. To apply visit www.fahcsia.gov.au or call 1800 183 374

TELESIGNAL ANTENNA SYSTEMS Pty Ltd

Government Endorsed TV

Antenna Installer

- Digital TV Antenna Installations
- Extra TV Points
- Digital Box Set Up & Tuning
- Tune & Set up TV, Video, DVD's & Blu-ray
- Pay TV Cabling
- Watch Foxtel in any room with a Pay TV System

Call for a FREE Quote Today, Local Resident

Ph: Ian George 0417 809 403

Email: telesignal@bigpond.net.au

Website: www.telesignal.com.au

GARDEN MULCH

Delivered to your Home

\$50.00 per Truck Load

(approximately 10 cubic metres)

Contact the "Cozzies" at

Para Trees for your

Local Delivery

Vince: **0418 836 553**

Jason: **0408 857 931**

One Tree Hill Institute



A great venue to hold an Engagement Party,
Wedding, Special Birthday, Reunion,
Meeting, Naming Day or Other.
Competitive Rates available.

Check us out on the web :

www.onetreehillhall.com.au

or Phone: 8280 0000

or Email: oth.hall@bigpond.com

ADVERTISING RATES FOR THE GRAPEVINE

	<u>Colour Ads:</u>	Eighth Page	\$30
		Quarter Page	\$60
		Half Page	\$150
		Full Page	\$350
	<u>Black and White:</u>	Eighth Page	\$20
		Quarter Page	\$40
		Half Page	\$100
		Full Page	\$250

Classified Ads: Just \$8.00 These are great for promoting your business, Garage Sale or Items for Sale. All ads need to be in by the deadline which is shown on the front page.

Phone: 8280 7095 or

Email: oth.grapevine@bigpond.com

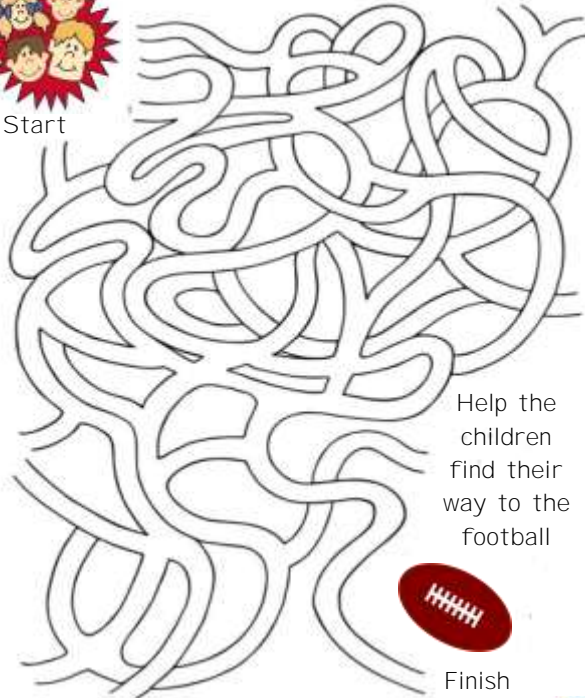
Please note that you must be a resident of the One Tree Hill area or have a business in the town.

Kids Page

School holidays are here again, the puzzles are a little bit harder this month and should be perfect to complete in the holidays. We are having so much rain and it's been so cold so I guess you are all spending more time inside where it's warm, so enjoy doing them. If you have a particular puzzle you like, don't forget to email me and I will see what I can do. Perhaps some of you are leafing through cook books in readiness for the Junior Chef bake off which is Slices this month, good luck if you are entering. Enjoy your school holidays Until next month Auntie Bev. Email: oth.grapevine@bigpond.com or drop me a line at the Grapevine Postal address is OTH Grapevine P.O. Box 196 One Tree Hill Post Office, SA 5114.



Start



Help the children find their way to the football

Finish

Q: What pie can fly? A: A Magpie!

Q: How can you even seven? A: Remove the "S"!

Did you hear about the 2 silkworms who had a race?

It ended in a tie!

Q: What did one ear say to the other ear?

A: Between us we have brains!

Q: How do you make a band stand? A: You hide all the chairs!

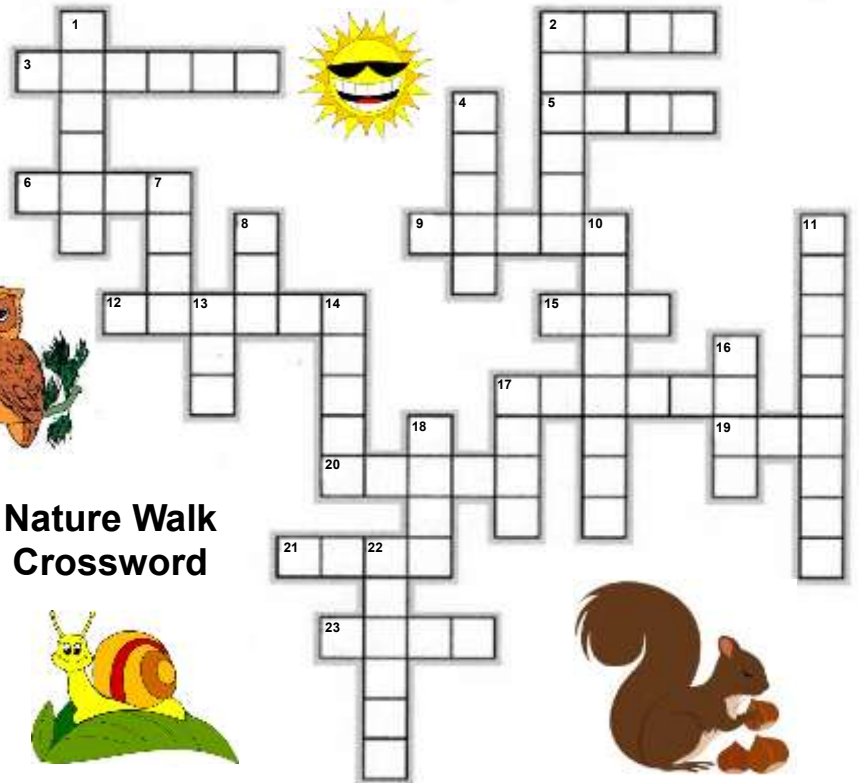
Q: Why was the broom late? A: He over-swept!

Q: What did one magnet say to the other magnet?

A: I find you very attractive!

Q: What do you get when you cross a parrot with a centipede?

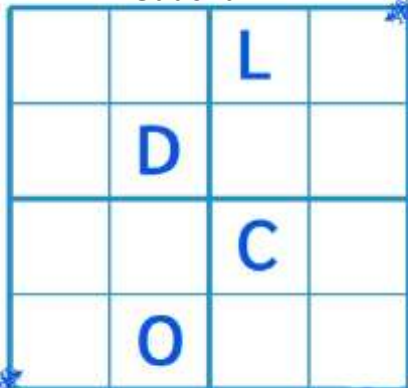
A: A Walkie talkie!



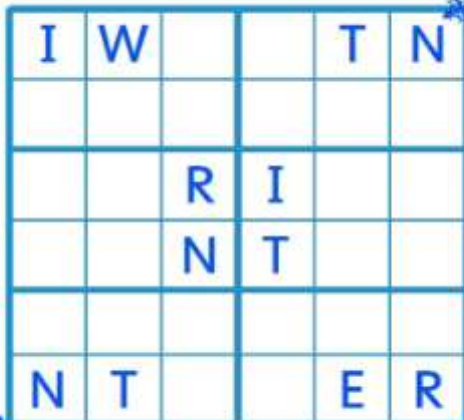
Nature Walk Crossword



Sudoku



Every row, column and mini-grid must contain the letters "Cold"



Every row, column and mini-grid must contain the letters "Winter"

Air	Bark	Bird	Butterfly	Clouds	Dew	Fish	Flower	Hill
Leaf	Owl	Pebble	Pond	Rabbit	Rock	Roots	Snail	Snake
Squirrel		Sun	Tree	Turtle	Valley	Vines	Worm	

Cross them off as you use the words.

Across

- 2: A small body of water
- 3: The ground dips down
- 5: A feathered creature that flies
- 6: Underwater creatures
- 9: These grow on the ground
- 12: Growing things that blossom
- 15: Shines in the sky during the day
- 17: Slow movers with a shell
- 19: What we breathe
- 20: A long, thin reptile that has scales
- 21: A large stone
- 23: A wriggly creature that lives under ground.

Down

- 1: This animal hops along
- 2: A small stone
- 4: Creature who takes his home wherever it goes
- 7: You can climb these
- 8: Moisture on the grass
- 10: They live in a tree
- 11: It starts life as a caterpillar
- 13: This bird "Hoots"
- 14: Trees and plants have these
- 16: This grows on a tree branch
- 17: A place where a bird builds a nest
- 18: The outside of a tree trunk
- 22: White, fluffy and in the sky

WOMBAT'S

- * Bobcat & Tipper Service
- * Excavator 4.5 tons
- * Pig trailer & tipper (24tons)
- * Concrete/Pavers prep & removal
- * Post hole boring (350m-450m)
- * Trench hole digging to (1200mm)
- * Shed site prep
- * Rainwater tanks prep
- * Driveways
- * Stock burial
- * Civil work
- * Retaining wall prep
- * Roller 1.6 tons static



Keep it Local Phone:
John Mancone
0417 456 656

E & A Vanin



LOCAL PLUMBING SERVICES

DOMESTIC-COMMERCIAL-INDUSTRIAL

- General Plumbing Maintenance
- New Homes & Extensions
- Drains & Stormwater
- Bathroom Renovations
- Hot Water Service Changeovers

REGISTERED MASTER PLUMBER

EDDIE VANIN PROPRIETOR

M: 0412 394 689

Home/Office 8280 7970

SEPTIC TANKS PUMPED OUT

For good old fashioned service call

8283 3656



SEPTIC PUMPING SERVICES

Email: septic1@bigpond.com

Web: www.septicpumpingservices.com.au

Steven O'Connor

Naturopath, using Herbal and Nutritional
Remedial Massage Therapist
Dip App Sc(Ag), Adv Dip W Herb Med, Adv
Dip Nut Med, Adv Dip Nat, Dip R Massage
For chronic pain and alternative medicine
using herbs and nutritional medicine
Health Rebates Apply

Kilberin Cornishmans Hill Road

One Tree Hill S.A 5114

82807003 0407820422



FARM MACHINERY

Local Sales for Small/Medium Farms

- * Slashers (5' and 6')
- * Backhoes
- * Wood Chippers - (3PL)
- * Fertilizer Spreaders
- * Tow Along Mowers (For ATV/4WD)



Stock at Hand
& Orders Taken

Direct Importers, So Great Prices Ph: 0406 382 342

www.safarmequipment.com

Uleybury

**THE ONLY ONE TREE HILL
REAL ESTATE OFFICE
& THE #1 SELLING AGENT!**

**One Tree Hill
REAL ESTATE**



Find us on
Facebook

Choose the Agents who have
the most in-depth knowledge
of our area, our
lifestyle & have the most
successful record of sales
over the last decade.

COMING SOON.....

Location, Location, Location!!!

Lovely Federation style home in Craigmare. Approx 1/2 acre
property. 4 beds & 2 baths.

ALSO..... Top quality executive home on 5 acres. Beautiful pool
& views. POA. Phone Fay for information.

**Lot 471 Kentish Road,
BIBARINGA**

5 Beds, 2 Baths, open plan
living, 10 acres, hills views.

\$650,000 to \$670,000

Fay Hull: 0407 962 884



Shop 3 Blacktop Road, SA, 5114 RLA: 201543

Phone: 8280 7775 Fax: 8280 7704 Email: admin@onetreehillrealestate.com.au

FREE APPRAISALS by your local area expert!

**Air Conditioning &
Complete Electrical
Split Systems**



Servicing the One Tree Hill Area

Deal Direct With Local Tradespeople

Phone for a FREE Quote Today

Air Conditioning & Electrical Installations

***We can Supply & Install Wall Split Systems
Or Ducted Split System Air Conditioners***

All Brands Available

Call Now & Have Your Unit Installed Before Summer

Phone: Peter, Ryan or Leon Moyle

0407 463 310 A.H. 8280 7442

Email: completesplits@gmail.com

PGE139465 L051080

Looking for Roller Shutters?

For a FREE Measure & Quote

Call Your Local Supplier



ESJ INSTALLATIONS PTY LTD.

One Tree Hill

Contact Earl on 0409 426 255

or A/H: 8280 7741

**A1 Quality Workmanship & Materials
Repairs and Conversions on Existing Shutters**

**WE WILL NOT BE BEATEN
ON PRICE!!**

Crime Report – ONE TREE HILL Rural Watch – Offences reported between 18th May and 20th June 2012

Between 28th May and 4th June Theft of stock

23 Sheep stolen from property after gate removed to paddock.

31st May

Non Residential Serious Criminal Trespass

Business broken into via smashing window - money and alcohol stolen.

10th June

Arson of Motor Vehicle

Vehicle stolen from Munno Para address—burnt out at above location.

Between 11th and 12th June

Non Residential Serious Criminal Trespass

Shed broken into by cutting lock. Tools and electrical items stolen.

Between 15th and 18th June

Property Damage

Window smashed at school.

Williams Road, GOULD CREEK

Black Top Road, ONE TREE HILL

Medlow Road, ULEYBURY

Uley Road, ONE TREE HILL

McGilp Road, ONE TREE HILL

Quad bikes have recently been targeted in the One Tree Hill area. It is of great assistance to Police if property owners record serial and chassis numbers of equipment on rural properties and a photo of the property is kept on hand. These items are very difficult to trace if Police recover them and often end up at public auctions as the owner can not be identified.



As always if you have any information to assist with any crime issues in the area please call Police Communications on 131 444.



"ADELAIDE NORTHERN VETERINARY GROUP"

Drs. ALAN & ROBERT IRVING, B's.V.Sc

Modbury—Salisbury—Elizabeth East—Elizabeth Park

Ph: 8280 7353 or M:0419 806 213



www.adelaidenorthernvet.com.au

Email: alanirving@internode.on.net

Rob Green Security

**Servicing, Installation, Monitoring
Your Local Technician**

Ph: 0419 398 346



NEIGHBOURHOOD

WatchSA



MAIL THEFT

Your mail includes items about your identity such as driver's license, utility accounts, credit card transactions, and bank statements. People can steal these, and use them to assume your identity and then defraud others using your name. This can have devastating consequences for you and your reputation. By considering some simple crime prevention tips you can protect yourself and others by making sure your letter box is as secure as your house.

- * Consider purchasing a locked mailbox or convert your current mailbox to a lockable style.
- * Clear the mail daily.
- * Have mail held at the Post Office or collected by a friend when away for extended periods.
- * Dispose of unwanted mail in a way that no one else makes use of it. i.e. shredding it, don't just throw it in the rubbish.
- * Ensure your mailbox is in good condition so your mail doesn't fall out on the ground.
- * Make sure your mailbox is large enough for the mail to be dropped into secure section and do not allow letters to be overflowing.
- * If mail is delivered incorrectly, write "delivered to wrong address" on the front of the envelope or if the addressee does not live at your address write "not at this address" and return to Australia Post.

Staying Safe Around the Home

Our home is a place that we like to think of as safe. But did you know that one in 7 people were injured in their homes last year? That's more than on the road and on the sports field. These are some tips on how to stay safe at home.

- * Use non-slip mats in the shower and bath and mop up any water you see.
- * Have well-lit stairs by installing a light switch at both ends of the stairs. Always use a handrail. Wear slippers or non-slip shoes on wooden floors or tiles. It's easy to slip or trip if you're just wearing socks.
- * Make sure that you can see sliding glass doors. The easiest way to see the glass is to put stickers on it, or add a frosted panel.
- * Play it safe with ladders - keep three points of contact on a ladder at all times and don't overreach sideways - try to keep a belt buckle between the ladder rails.

Safety with kid's toys

Size: the smaller the child, the bigger the toy should be.

Children under three put everything in their mouths, up their noses and in their ears. Also, they can't cough things up until they're over three years old. If a toy is small enough to fit into a small container about the size of an old film canister, or can easily break into small parts, don't give it to a small child.

Surface: - check that any decorative bits and pieces on the surface of toys are firmly attached and any stuffing from toys can't come out.

Strings: - check that strings or tails on toys are not long enough to pose as a strangulation threat or choking hazard.

CHAINSAW BASICS - Part Two

Continued from last month....

Aiming the Drop of Your Tree:

Once again I stress here that if the tree to be dropped is not reasonably well balanced or is not positioned clear of fences and buildings etc. then please consider getting an insured expert to come in and do the job for you.

Ok, so we assume that the tree is pretty nicely balanced and is standing up fairly straight. The day is not windy and you are feeling confident that you have considered all of the safety aspects of the task.

You first need to make an undercut in the tree's trunk that centres on the direction that you want the tree to fall. The first cut for this "notch" should be made parallel to the ground and to a depth of between a quarter to a third of the diameter of the tree. The second cut of this notch starts higher than the first cut and is angled down so that it meets the back end of the first cut and gives you a wedge of wood that can be carefully removed.

You now need to make a 'back-cut' that is on the opposite side to where you have just cut the notch. The back-cut should be made about 25mm above the height of the first cut of your notch and should be parallel and square with that of your first cut of the notch. The idea of this back-cut is to leave enough timber to form a "hinge" **so do not cut right through to the depth of the notch.** Slow your cut feed rate as you approach the desired depth so that you can maintain control. Have a wedge ready on standby in case you need to drive it into the back-cut to prevent the cutter bar from being pinched. These wedges are often made of plastic or wood just in case they come into contact with the chain whilst being driven into the tree. As you are approaching the desired depth of the backcut you should ensure that the area is still clear of people and yell "timber" as you feel that the tree begins to fall. Stop your saw quickly, place it on the ground clear of the stump, and make your retreat to the safe area that you had already selected. Remember to watch out for kickbacks and bounces as the tree trunk hits the ground. Smaller trees generally should not require the use of a wedge and need only a safe nudge to send them on their way.

Trimming the Tree:

So you have managed to safely drop the tree just where you wanted it, well done, but there are still hazards associated with trimming it down.

- * Look at how the fallen tree has rested and ensure that it cannot roll away. If there is a chance that it might want to roll then you will need to operate on it from standing on the uphill side of it.
- * Plan your work so that you do not need to work the chainsaw above your waist height.
- * Where possible, trim the opposite side of the tree from where you are standing.
- * Cut the limbs from the butt end first and make your way up to the other end.
- * Limbs that are supporting the fallen tree in any way should first be cut on the underside and then can be cut on the topside. This is to avoid a limb that is in tension springing back and striking you.
- * Watch for spindly branches that may want to whip around when they come in contact with your chainsaw.

Logging the Tree:

- * Clear the area around the trunk of all sticks and branches that were taken off in the trimming stage.
- * Plan your cuts so that you will not let the saw blade come into contact with the ground, as this will dull the chain's cutting edges very quickly.
- * Remain alert for any situations where the trunk may roll or where the cuts could pinch the saw blade due to movement of the trunk.
- * To reduce the likelihood of pinching on the saw blade, make cuts on the underside of the trunk and then finish off the cut from the topside of the trunk.
- * With larger logs there may be circumstances where it might be safer to drive a wedge into the cut to prevent it pinching on the saw blade later.

Pruning Trees:

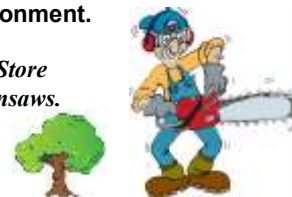
- * Pruning of trees can be a hazardous operation because you have most of the safety issues mentioned earlier plus the added hazard of cutting at heights. This is the reason that pole saws were invented so that people did not need to work off ladders. If you do not have a pole saw and feel that you want to go ahead and do the job from a ladder, make sure that the ladder is a sturdy one and that you have it well balanced and supported. You do not want a ladder to move or sink into sandy soil whilst you are standing on it operating a chain saw (which is not a good idea or recommended due to the obvious hazards).
- * Do as much as you can with a handsaw rather than a power saw as it is much less dangerous and you usually have a free hand to help with your support.
- * Stand on the opposite side of the trunk from where the limb is being cut.
- * If the limb is too large, make a cut from the underside and then finish it off from the topside.
- * Plan your cuts so that you cannot be struck with falling or swinging branches.
- * You are much better off leaving the use of a chainsaw for once the limb is laying on the ground and ready to be logged up.

What to do with the Chainsaw once you have finished with it:

If you are not planning to run the chainsaw for a while, there are a few things that you should do so that it is ready for use the next time that you have work for it.

- * DO NOT leave any fuel in it to go stale and gum up the works. Run the tank empty but do this at idle as it is not safe for you or the saw to run it out of fuel at high revs.
- * Give the chainsaw a good clean, paying attention to the air filter, inside the chain sprocket cover, the cylinder fins and blade.
- * Lightly lubricate the chain and bar with a touch of WD40 or similar.
- * You can leave and residual chain bar oil in the reservoir as it will not break down or harm the chainsaw in any way whilst in storage.
- * Finally, I like to rug the chainsaw up in an old towel or piece of cloth to keep it in a dust free environment.

Many thanks to Mark from the Fodder Store for his informative information on chainsaws.



Jokes - The real definition of words when used by women

- 1: Fine: I am right. This argument is over. You need to shut up.
- 2: That's ok: One of the most dangerous statements a woman can to a man. "That's okay" means she wants to think hard and long before deciding when and how you'll pay for your mistake.
- 3: Nothing: The calm before the storm. This means "Something" and you better be on your toes. Note: Arguments that start with "Nothing" usually end with "Fine" (See #1).
- 4: Five minutes: If getting dressed, this means half an hour. (Don't be mad about this. It's the same definition for you when it's your turn to do some chores around the house.)
- 5: Thanks: A woman is thanking you. Do not question this or faint. Just say, "You're welcome," and let it go.
- 6: Loud sigh: Not actually a word but rather a non-verbal statement often misunderstood by men. It means she thinks you're an idiot and wonders why she is standing here wasting her time arguing with you about Nothing". (See #3)



JUST WRECKING

ABN: 83 092 676 338

STUART

TOYOTA'S



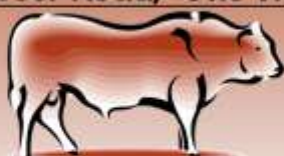
PHONE: 8359 4499

FAX: 8359 4500

Corner of South Rd & South Terrace, Wingfield, 5013

Kamcheyenne Limousin

Shillabeer Road, One Tree Hill



Sides of Beef

\$7.50 Per Kilo

An average side weighs approximately 100kg.

The Limousin breed is renowned for its lean, low fat and highly muscled carcass traits.

We guarantee low fat, young and tender meat delivered to your door in a refrigerated vehicle.

Our meat is hung for 9 days and our cut list allows you to choose how you want your meat butchered.

At Kamcheyenne we use no hormone growth promotants or antibiotics and our cattle are raised and handled in a natural stress free environment.

For more information on sides of beef or live cattle sales please phone:

Sarah on 0402 099 106 or

John on 0427 131 018

ONE TREE HILL

GENERAL STORE

Now with a sit down area to enjoy your freshly brewed coffee and irresistible cake

NEW

Check out the ever changing hot food items as well as a selection of gourmet cakes and slices

The General Store's New Opening Hours are

Monday's to Friday from 7.00am till 6.00pm

Saturday and Sunday 8.00am till 5.00pm

Public Holidays 8.00am till 4.00pm

Closed Good Friday, Christmas Day & New Years Day

We have a large range of groceries, magazines, confectionery and kids toys.

ATM now in store

PH: 8280 7020

Agents for



Olympic Boring Contractors Pty.Ltd DRILLING WATER WELLS



Irrigation, Stock and Domestic Bores

Specialized Machinery to Drill up to

250m with Mud, Air & Auger

Call Michael Ferraro - Resident of OTH for 27 Years

Ph: 0408 847 060

Or: 8380 9474



No Job Too Big or Too Small

Professional Tree & Stump Service

Call Brad for FREE QUOTES

on: 8365 8000

Don't Forget to ask for our Special Grapevine Price....

The Northern Foot Clinic

Heel Pain, Sports Medicine, Aching Feet, Children's Feet
Ingrown Toenails, Plantar Warts, Orthotic therapy, Mobilisation

Pain relief today and prevention for your future

- * 109 Haydown Rd, Elizabeth Vale (onsite parking)
 - * 16 Adelaide Road, Gawler (onsite parking)
- DVA, Hicaps. Medicare (GP approved only)

8287 3888

Olympic Boring Contractors Pty.Ltd PUMP SALES & SERVICE



Specializing in Design & Installation of Submersible Pumps

Supply & Installation of Domestic Pumps

Sales & Pump Service

Over 35 Years of Experience

Call Michael Ferraro OTH Resident for 27 Years

Ph: 0408 847 060

Or: 8380 9474



Pumps, Generators, Hose & Fittings
Servicing the One Tree Hill Area



Present this advertisement for
15% off
recommended
retail price on
DAVEY household
pressure, sump &
pool pumps also
MEDO septic air
blowers

DEPEND ON
DAVEY
WATER PRODUCTS



U2, 1445 Main North Rd,
Para Hills West S.A. 5096
Ph: 8285 2344

Email: sales@ncpsindustrial.com.au

Web: www.ncpsindustrial.com.au

(Opposite Bunnings Parafield)

Just NISSmaz

NEW, USED, RECO PARTS

Cars, Commercial & 4WD's



Ph: (08) 83591444

nissmaz@neonet.com.au

POST OFFICE HAS NOW RELOCATED
ONE TREE HILL



GIFT & POST
FOR ALL YOUR BANKING,

BILL PAYING, POSTAL NEEDS, GIFTS AND LOTS MORE

PH: **8280 0090** FAX: **8280 0030**

OPENING HOURS: MONDAY TO FRIDAY 8AM - 5PM

SATURDAY 9AM - 12PM

SHOP 1B LOT 2 BLACK TOP ROAD, ONE TREE HILL, 5114



PROPEST 1800 24 22 21
management services

We service any pest
No problem!

PO Box 684 St Agnas

Residing Humbug Scrub

- * Termite/White Ant Removal * Termite Baiting Systems
- * General Pest Control * European Wasp & Bee Removal
- * Existing and Pre Purchase Property Inspections
- * Weed Eradication * Free Site Assessment

www.propestcontrol.com.au

AS/NZS ISO 9001:2000
QUALITY CERTIFIED COMPANY



COMMUNITY DIRECTORY

Hall Hire Ph: 8280 0000 or 0459 105 045

Council Member	Joe Federico	0417 016 164
C/Member & JP	Andrew Craig	0417 016 160
Cricket Club	Brian Walter	0418 815 047
Friends of Para Wirra	Patsy Johnson	8280 7279
Home Assist	Playford Council	8256 0355
Market Contact	June B.	8287 3306
Nth Hills Pony Club	Kylie Scheffers	0422 882 184
OTH Grapevine	Editorial Team	8280 7095
OTH Progress Ass	Secretary	8280 7095
OTH Playgroup	Monday	0448 354 990
OTH Playgroup	Wednesday	8284 4555
OTH Primary School	Front Desk	8280 7027
Playford Band	Ivor McLatchie	8280 7214
Scout Group	Trevor	8255 3115
Senior Citizens	Martin Lindsell	8254 9248
Soccer Club Registrar	Sonia	0413 452 993
Tennis Club	Gary	8280 7067 or 0415 399 658
Walking Club (Walkie Talkies)	Helen	8280 7035
Wine Grape Growers (OTH Region)		
Fay	Ph: 8284 0201 or Natalie	8280 7335

Out of the mouth of a child - Ironing:
A mother was ironing the clean laundry one day. Her son asked her, "Mum why are you ironing those clothes?" His mother said. "To make them nice and wrinkle free." Her son said, "Then why don't you iron Grandma's face?"



Results of the Bake-Off Junior Chef for June

Once again the judges were really impressed with the quality of the entries presented to them at the June Market.

Winners of the 5—8 year section:

1st: Kaylen
2nd: Joshua
3rd: Kiahnah

Winners of the 9—13 year section:

1st: Caitlyn
2nd: Brianah
3rd: Sam

Encouragement award to Samuel

Congratulations to all of the winners of the bake off. Our judges are already licking their lips for the August, it's going to be Chocolate Cakes.

One Tree Hill Junior Baker Competition

Conditions of entry: The item of cookery to be submitted along with size and quantity will be published in the Grapevine in the month prior to the One Tree Hill market day. One entry per person.

This will allow for seasonal baking such as Christmas and Easter.

Entries are to be delivered to the One Tree Hill Junior Baker's table at the market between 9am and 9.30am. You will be required to make 3 identical items for the theme of the month. Paper plates will be supplied and entry cards including entry number will be attached. Judging will commence at 9.30am.

There are 2 age categories: 1) Ages 5 to 8 years 2) Ages 9 to 13 years.

Prizes for each category are 1st: Blue Ribbon and \$15.00 2nd: Red Ribbon and \$10.00 3rd: Green Ribbon and \$5.00. Entries can be collected along with prizes by 1pm.

How to enter: You will need to email (oth.grapevine@bigpond.com) or complete the entry form and mail to One Tree Hill Progress Association, PO Box 196 One Tree Hill SA 5114. Or drop it into the General Store. You must include your name, age and phone number.

Registration must be completed before Thursday 4th July for the July Competition.

The May results are on page 3.



Theme for August is Chocolate Cakes



Name	Age	Phone

SPRINT
AUTO PARTS

PROUDLY
SUPPORTING
SA!

EVERY Car, EVERY Part, EVERY Day.



SPRINT has all your parts & accessory needs!

Fluids!

Hard Parts!

Car Care!

With 35 stores, we're always
just around the corner.

PROUDLY SA OWNED & OPERATED SINCE 1984
35 STORES - OPEN 7 DAYS*

GET DISCOUNTS ON PARTS & ACCESSORIES!

BECOME A SPRINT AUTO PARTS VIP CLUB MEMBER

For your nearest store, go to www.sprintautoparts.com.au

Advantage



EVERY Car, EVERY Part, EVERY Day.
For your nearest store, go to www.sprintautoparts.com.au



Need a Skip?

Rubbish Bins and Mini Skips

from 2m3 to 60m3

Call your local Skip/Bin Provider today!

Daniel 0414 280 891

Ken 0488 360 360



360 Mini Skip
Hire



DISTRIBUTION 360 Pty Ltd
Waste to Resources

SALE
from Pat the
Drum Man



New & Used

IBCs
From \$30 EA
NEW IBCs
Food Approved
\$330



Pallet Tanks

Open
Mon - Thurs
6am - 3pm
Friday
6am - 2pm

Valves
Adaptors
Bungs
Caps
Spouts

Tanks
& Drums
suitable
for Wine
Storage



Thank you for
"Defending" Australia!
20% OFF
for all current and
ex defence force
personnel



NEW!
20L & 60L
Tins available



Half cut drums
perfect for
camping
\$16.50 each

Drums suitable
for Petrol
or Diesel
Keep the
mice away



Tanks & Drums suitable
for almost any product
or chemical you like!
Spare Parts &
Fittings available!

Container Reconditioning
Services Pty Ltd
Ph: 8359 7011
180a Cavan Rd, Dry Creek

AIR CONDITIONING

SEYMOUR HEATING & COOLING

Installations of Ducted Reverse
Cycle, Ducted Evaporative,
Ducted Gas, Combustion Heaters
and Servicing



20 Years Experience
For a FREE Quote call
Wayne on 0411 410 889

AUTO

FRANK'S BLACKTOP AUTO General

Engineering
Repairs to
4-Wheel Drives
& All Mechanical
Repairs
Black Top Road
One Tree Hill
Ph: 8280 7255 or
0410 490 246

BEAUTY

BEST DRESSED MOBILE TAN \$30.00

Vani T
Naked Tan
St Tropez
Call Lea
0411 416 011
www.bestdressed.net.au

Conditions May Apply

ENJO



For product
enquiries,
demonstrations
and all your
ENJO needs
contact
Beni Hite
Ph: 8280 7815 or
0403 763 826

ELECTRICAL

ROGER GIRDHAM ELECTRICAL

For all your
Electrical
Installations &
Maintenance
Jobs

Call Roger on
0417 853 863
or **8280 7788**

GARDENING

Geoff Jacobson for all
your gardening needs

- * Lawn Mowing
- * Tree Lopping
- * New Lawns
- * Fertilising
- * Weed Control
- * Pruning
- * Rubbish Removal
- * Landscaping
- * Shed Cleanouts

Ph: **131 546** or
M: **0407 733 832**

HATHA - YOGA

YOGA & HATHA CLASSES WEEKLY

Monday Evening
7.00pm—8.30pm
Tuesday Morning
10.00am - 11.30am
The Moonlight Choir
Singing Workshop
Wednesday
7.00pm - 9.00pm
All Welcome
Bookings are Essential
Call Kim on 8522 3776
or 0412 192 076

MAINTENANCE

WARNER'S HOME MAINTENANCE

- * Gardening
- * Odd Jobs
- * Painting
- * Pruning
- * Gutter Cleaning
- * Basic Home
Maintenance

Call Pete:
0433 619 108

PEST CONTROL

BEST PEST CONTROL

- * Spiders
 - * Earwigs
 - * Millipedes
 - * Bees
 - * Ants
 - * Flies
 - * Termites
- Call Paul on
0418 893 411

PLANTS

DEALTRY NATIVE PLANTS WHOLESALE

Trevilla Road, (Off
Frank Barker Road
OPEN 1st Two
Weekends each
Month 10am-4pm
Plants from \$1.00
Phone for directions
Ph: 8280 7079 or
0402 010 877
Gift Vouchers Available

ROAD GRADING

ROAD GRADING
in One Tree Hill
and the
Surrounding
areas

Call for a FREE
quote for all
Grading & Road
Maintenance
Contact Merv on
0428 261 170

FOR RENT

Fully furnished
self contained
one bedroom
unit available.
Walking distance
to village.
Short or long
term tenancy.

Contact:
8280 7086

The Kitchen

Keep your kitchen clean. Eat out.

A messy kitchen is a happy kitchen, this one is
delirious.

Countless people have eaten in this kitchen and
gone on to lead normal lives.

Skinny cooks can't be trusted.



Housework

Definition: Husband - A person who can take out
the garbage and give the impression that he has
just cleaned the whole house.

A clean house is a sign of a
misspent life.



Playford Council Contact Details

24 hour Emergency & Lost/found dogs

8256 0333

General Enquiries and Burning Permits (seasonal) 8256 0333 Email: playford@playford.sa.gov.au

Libraries: Elizabeth 8256 0334

Munno Para 8254 4600

When telephoning council with a request please remember to get a Customer Registration Number (CRN)
to ensure registration and easy identification of your communication.

You can also phone or email your local Councillors.

Joe Federico Ph: 0417 016 164

Email : jfederico@internode.on.net

Andrew Craig Ph: 0417 016 160

Email : adcraig@ihug.com.au

Community Notice Board

Do you have an upcoming Community event or a special announcement that you would like printed on this page? Keep notices as brief as possible please.

Email or call with your details. Email: oth.grapevine@bigpond.com Phone: 8280 7095

Please note deadline date on the front cover for each edition.



Para Wirra



Did you find the time to check out the web site that we featured last month?

If not this is another photo taken from the site. This is the picnic area where you can relax with a picnic and go bush walking or play at the playground.

Chas's web site is well worth the visit.
Simply go to:

<http://georama.com.au/parawirra>

If you are not able to get out and about then you'll feel like you are really there with all the wonderful views Chas has on the site. It even comes with sound effects.

Para Wirra is open most days
from 8am until dusk.

Public Notice



The City of Playford in accordance with Section XXX of the Local Government Act 1999 is undertaking a review of the One Tree Hill Cemetery as it has reached full capacity.

As part of the review, The City of Playford advise that:-

- * Current leases will still be honoured
- * New burial leases will not be issued
- * New leases for cremations will still be issued

Further queries about the One Tree Hill Cemetery can be directed to City Operations Customer Communications Officer,

Renae Bryan, on 8256 0161.

ANEAS Winter Exhibition at the Great Hall

Now that winter is well and truly upon us it's the ideal time to ready those masterpieces for the Winter Exhibition. ANEAS members are invited to prepare their entries for this year's show at the Great Hall, Elizabeth Civic Centre. The show will open at 7pm on 2nd August and continue through until 30th August.

All works are to be for sale and will be vying for prize money.

If you would like further information contact the Arts North Elizabeth Art Society Inc.
7 Judd Road, Elizabeth SA.

Phone: 8254 2226



Playgroup at the Institute

Vacancies are available for babies to school age children at the OTH Institute.

Monday Ph: 0448 354 990

Wednesday Ph: 8284 4555

9.30am until 11.30am both days



OTH Senior Citizens meet every Tuesday at the Institute from 1.00pm until 4.00pm. Come and enjoy the camaraderie along with indoor bowls, cards, afternoon tea as well as trips and dinners at various times. Any age are welcome.

Contact Martin on 8254 9248 or
Gordon on 8255 2383 for more information
or just turn up for a look.

Next Country Market

Saturday 6th July (9am-1pm
Approximately) at the

One Tree Hill Institute Black Top Road.
Great variety of hand made items plus lots
of food items.

A reminder to all residents that the Playford Council's Mobile Library Service now comes to One Tree Hill on a Friday afternoon, once a fortnight.

The van parks outside of the Institute opposite the shops from 3.00pm - 4.00pm.

Visiting dates for this month
are the 13th and 27th July.



PROGRESS General Meeting - Thursday 12th July at 7.30pm.

Please note that there is no June meeting.

Venue: One Tree Hill Institute, Black Top Road, One Tree Hill. New members are very welcome.

