



Lest we forget  
November 11th

# One tree hill grapevine



This is a free community Newsletter. However a Gold Coin Donation to the Piggy Bank in General Store would be appreciated.



NOVEMBER

Volume 34

Edition 10 - 2011

Deadline for the December Edition is Friday 18th November 2011

## Para Wirra Recreation Park

An open day was held on 16th October at Para Wirra. The day was a huge success with over 600 attending.

The photos below were taken on the day.  
More about the day is on page 14 of this edition.



### EMERGENCY NUMBERS

Police: 131 444

Ambulance & Other Emergencies:

Country Fire Service: 000

Station:(When manned) 8280 7412

Hospital: 8182 9000

000

General Business: 8280 7055

Bushfire Info Hotline (24hr): 1300 362 361



[www.cfs.org.au](http://www.cfs.org.au)

## From the Desk



Another month and we will be preparing the Christmas edition of the Grapevine, how the year has flown. We have seen lots of changes in the Grapevine and hope that you are still enjoying the newsletter. From the comments we hear you do like the changes. Its been great to present the new articles and have some input from local clubs.

This issue we have highlighted the Para Wirra National Park. When was the last time you visited the park which is at OTH's doorstep. If you haven't been for a while, make the effort, it is truly a park which does us proud. The Friends of Para Wirra do a great job, a pat on the back to you all for your dedication.

The Junior Baking Competition is steadily getting more entries which is wonderful to see. Keep it up kids. We were saddened to hear that Tracey who organises and prepares the prizes etc. for the competition had the passing of her Mum last month. Our deepest sympathy to her and her family.

Great news from the CFS this month, there were no major incidents. We hope that this continues throughout the spring/summer months.

In this issue we have the article on snakes, this article has been submitted from the local Fodder Store. It's a timely reminder to be aware as the weather warms up and to clean up around the house to avoid having a snake greet you at your door!

We hope that you take the time to read Joe Federico's report on page 4, if we all make the effort to have fire breaks it may help all OTH's residents.

Until next month, the Grapevine Team.

**Phone: 8280 7095 Email:**  
[oth.grapevine@bigpond.com](mailto:oth.grapevine@bigpond.com)

**Mailing Address: c/o Post Office, One Tree Hill, 5114**

\*\*\*\*\*

### Letter from Progress Association. November 2011

Not a lot has been happening around the township that has involved Progress other than managing the ongoing general duties. Our hall manager has been kept busy, bookings are still coming in well, thanks to the web site that potential hirers can view before coming to see the hall.

Major works around the Institute, with McGilp Road being resurfaced for the first time since the late 70's. It is going to be very much appreciated by the residents and users of the Primary School and also users of McGilp Recreation Park.

The car park around the Institute has also been resurfaced with Disabled Parking places re-signed. Please note, these two disability parks are not a loading zone, particularly on Market days, parking and unloading in a designated disabled spot will incur a fine.

Email: [oth.progress@bigpond.com](mailto:oth.progress@bigpond.com)

Or Phone: **8280 7095**

October has been a difficult month for many members of the committee dealing with serious family illnesses. Tracey (Treasurer) and husband Stuart (Committee) continued bravely to do as much as they could manage during this time when Tracey's Mum was so seriously ill. We are very sad to report that Janice passed away on the 25th September. As you will see in our tribute to Jan, 4 of her 8 children and their families reside in One Tree Hill.

I am pleased to see that this issue of the Grapevine has several articles on preparing for the summer ahead, please take care and help keep our township as safe as possible.

Well, back to the weed slashing and mowing - keeping ahead of pre-summer growth is a real challenge.

Regards Ian Slater  
President of OTH Progress Association

**C/O Post Office One Tree Hill, 5114**



\*\*\*\*\*

### Letter To The Editor, In reply to "Concerned Resident"

I would like to outline that if this resident does not want to hear roosters then get back to suburbia. The idea of living in a small community is to enjoy the sounds of the country whether it be roosters or cockatoos or galahs. Perhaps a pair of cheap ear-plugs may solve your problem!  
"Happy to hear Roosters" Name and Address supplied.  
*Good or bad we like to hear what you think of articles, email or write to*

If you have any favourite sites we invite you to share it with our readers.

## Read the Grapevine on line

If you haven't had a chance to see the Grapevine on line please go to the site:

[www.onetreehillhall.com.au](http://www.onetreehillhall.com.au)

**This is a great way to share local news with friends and family who can't**

get a hard copy of the Grapevine. Happy reading.

\*\*\*\*\*

This newsletter is published by the One Tree Hill Progress Association. Email: [oth.progress@bigpond.com](mailto:oth.progress@bigpond.com) Ph: 8280 7095

The views expressed in this newsletter are not necessarily those of the One Tree Hill Progress Association.

Its purpose is to share local news, views and events. Advertisers are responsible for the accuracy of the content of their advertisement.

## Jan's Cream Puffs

### Ingredients

1 Cup of hot water  
600 ml Cream

Pre heat oven to 210°C

1/2 cup Butter  
Icing Sugar

1 cup of Plain Flour  
Vanilla Essence

3 Large Eggs



**Method:** Place butter and water in a saucepan over a medium heat. Melt butter and bring to the boil. When boiling add sifted flour and beat to a dough. Remove from heat and allow dough to cool. When dough is cold beat in 3 eggs until combined and almost glossy. Spoon 18 even mounds on to a greased baking tray. Bake at 210°C for about 45 minutes, reduce heat to 180° and bake another 15 minutes. Using a skewer poke a hole in each cream puff, turn the oven off and return the cream puffs to cool in the oven. Whip cream with icing sugar and vanilla essence to taste (sweeter the better). When ready to serve slice each cream puff in half and fill with cream. Dust with icing sugar. Best enjoyed with family.



Pictured are some of the winners of the October Junior Bakers Competition with their winning Muffins. Also pictured are the judges Joe, Cassie and Pam.

## Remembrance Day 11.11.11

This Remembrance Day we remember all who served our country during various wars, we are focussing our information this month on the two members of our community who gave the ultimate sacrifice during WW11.

The Clucas family lived on Uley Road, (now known as the Uleybury Winery) where they ran sheep. Their only son Frank Clucas was 21 when he was killed on December 20th 1943 during a mission over Germany.

When his parents passed away Frank's family generously donated their estates to many organisations, one being the One Tree Hill Community, hence the "Clucas Green" beside the Institute which was built in memory of Frank and his generous family.

Kenneth "Bob" Fry lived on a property on Cornishmans Hill Road, almost opposite Tyeka Drive. They had a dairy and also ran sheep for many years.

Bob and his brother Jack were great sportsmen, excelling in both tennis and cricket. Bob was 29 when he lost his life over the Bay of Biscay on August 1st 1943.

## We Will Remember Them





ONE TREE HILL GRAPEVINE  
CFS REPORT NOVEMBER 2011



### **Incident Report**

During the month of October the brigade has attended a small number of grass fires which have been started by residents who have let burning off activities get out of control.

In the meantime preparations are taking place to prepare equipment and to ensure the training of brigade members for the coming fire season is complete.

### **Reminders**

The fire Danger Season for Mount Lofty Ranges starts on the 1st December 2011 and will finish on the 30th April 2012. These dates can be changed (by Chief Fire Officer) if the conditions change suddenly but that is unlikely.

*Every fire season the One Tree Hill Brigade attends fires caused by mowers and slashers being used, after the grass has cured.*

*The Brigade would request that slashing and the clearing of the fire breaks occurs as soon as possible. Restrictions apply to the use of mowers and slashers during the fire danger season however notwithstanding these restrictions fires still escape from such activities every year.*

*Refer to the CFS website for details: [www.cfs.org.au](http://www.cfs.org.au)*

### **THE CFS NEEDS YOU**

We are recruiting for the bushfire season, if you are interested in becoming a CFS Volunteer please call. We train every Monday night at 7.30pm. (Not including public holidays).

For general information please contact OTH Duty Phone of **8280 7055** or **1300 362 361**

#### **Councillor's Report by Joe Federico**

Bushfire season is rapidly descending upon us. Council has recently updated its fire permit system that has now been in operation for a season and thankfully to date I have had no complaints with the need for a permit or the issuing of permits if they were required. Now as we turn our attention to bushfire prevention Council has new Section 105F Notices, if your property is non compliant you will receive the following notice **"You have received this notice because your property has been identified as a potential fire hazard.** You are required to take the following action to comply with the requirements of Section 105F of the *Fire and Emergency Services Act 2005*, you must; **Place a 5 metre break around all boundary fences and a 20 metre fire break around any dwelling and a 5 metre fire break around any other building or structure on the land. Any vacant block under 0.5 hectare must be cleared.** This must be completed by the **\*\*DATE\*\***. **You could face an expiation of \$315.00 for non compliance with this notice. (If you are a residential landowner with an allotment below 0.5 hectare, the whole of the block must be cleared of flammable or potential flammable undergrowth to a maximum height of 10cm).** If you receive such a notice you have rights of appeal "Your appeal should be instituted within 14 days of receiving this notice. A copy of the appeal notice must be sent to the authority that issued this notice. If you need assistance in writing a letter, Council can provide assistance to write a letter for people with literacy or language issues, please contact Council's customer service officers on 8256 0333. **If you are having difficulties in undertaking this work before the due date, please contact Council's Fire Prevention Officer, Dave Watson on 8256 0333 to discuss this matter. Council may be able to assist you before further action is necessary.** It is in everyone's best interests to take action in regards to fire prevention measures. Council accepts that there may be extenuating circumstances that may prevent this action being taken in a timely manner and is willing to assist wherever possible to avoid an expiation notice and help ensure prevention of possible risks. Please, if you are having

difficulties in meeting your obligations, are not sure of your obligations or feel it is unsafe to attack an area, phone Council and get advice, a fire break is not necessarily (but in most cases required) along the fence line. If it is unsafe to follow the fence line a compromise or suitable break can be negotiated with Council. It is also important to understand that **These Fire Prevention measures must be MAINTAINED throughout the fire danger season**, even if you have slashed once it may be necessary to slash twice if the grass has grown above 100mm, once again, if unsure please contact Council for advice. This will ensure a harmonious approach to fire safety.

If you have any concerns or issues with or about our City, please in the first instance phone: **8256 0333** or send your emails to [playford@playford.sa.gov.au](mailto:playford@playford.sa.gov.au) and cc to [crjfederico@playford.sa.gov.au](mailto:crjfederico@playford.sa.gov.au) this will ensure that Council sees your concerns and then forwards your e-mails on to me. If you are uncomfortable with Council viewing your comments then please e-mail me at [jfederico@internode.on.net](mailto:jfederico@internode.on.net) if subsequent to that approach you do not receive a timely or satisfactory result please feel free to contact me personally. However I cannot guarantee that I will be able to get any better results but will at least have Council reassess their position and provide an explanation as to their resolve and in some cases if not most, reach a compromise that is acceptable to all parties concerned. Council's 24 hour phone number is **8256 0333** for all of your enquiries and or Customer Reference Number (CRN) to ensure registration and easy identification of your communication.

I attend the One Tree Hill Market on the 1st Saturday of each month where I have a table and also judge the Junior Baking Competition. If you would like a chat I am always available to listen to your concerns.

Full Council contact details are on page 19 of this edition.



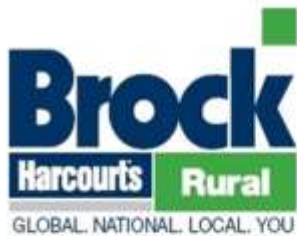
# ONE TREE HILL REAL ESTATE



Fay Hull  
0407 962 884

Top selling agent in the area

*We aren't 'Slick', but we  
are genuine, honest, hard-  
working agents who  
achieve record outcomes*



Shop 3 Blacktop Road, SA 5114  
Phone: 8280 7775 RLA: 201543



Liz Summersides  
0408 840 235



**FREE APPRAISALS by your area expert**

**We have an extensive data base of genuine buyers looking for properties in the Northern Hills!!**

## TELESIGNAL ANTENNA SYSTEMS Pty Ltd

Government Endorsed TV

Antenna Installer

- Digital TV Antenna Installations
- Extra TV Points
- Digital Box Set Up & Tuning
- Tune & Set up TV, Video, DVD's & Blu-ray
- Pay TV Cabling
- Watch Foxtel in any room with a Pay TV System

Call for a FREE Quote Today, Local Resident

Ph: Ian George 0417 809 403

Email: [telesignal@bigpond.net.au](mailto:telesignal@bigpond.net.au)

Website: [www.telesignal.com.au](http://www.telesignal.com.au)

## Birdwood Pump & Irrigation Services

Now Servicing the One Tree Hill area

We Specialize in  
Agricultural Bores, Pumps & Irrigation  
All Makes & Models Available

Call David  
0438 685 089



Agents for Grundfos Sales

## Looking for Roller Shutters?

For a FREE Measure & Quote  
Call Your Local Supplier



**ESJ INSTALLATIONS PTY LTD.**

One Tree Hill

**Contact Earl on 0409 426 255**

**or A/H: 8280 7741**

**A1 Quality Workmanship & Materials  
Repairs and Conversions on Existing Shutters**

**WE WILL NOT BE BEATEN  
ON PRICE!!**

## **JUST WRECKING** TOYOTA'S

ABN: 83 092 676 358

**STUART**



**PHONE: 8359 4499**

**FAX: 8359 4500**

**Corner of South Rd & South Terrace, Wingfield, 5013**

## **Just NISSmaz**

**NEW, USED, RECO PARTS**

**Cars, Commercial & 4WD's**



**Ph: (08) 83591444**

**nissmaz@neonet.com.au**

## **ONE TREE HILL FODDER & RURAL SUPPLIES**

**Shop 4/9 Black Top Road,**

**One Tree Hill**

**Ph: 8280 7680**

**Email: sales@onetreehillfodder.com**

**Come in and  
say hello to  
Charlie!**

**Suppliers of a vast range of products for domestic and rural needs**

- \* Electric Fencing \* Stock Wire \* Tie Wire \* Chicken, Dog, Trellis Wires
- \* Fencing Tools \* Droppers \* Posts (CCA and Creosote)
- \* Rainwater Tanks \* Irrigation Piping down to Micro Irrigation
- \* Irrigation Fittings \* Troughs and Feeders
- \* Adelaide Brighton Concrete Packs, Cement, Speedset, Lime, Mortar
- \* Potting Mixes, Chicken Manure, Mushroom Manure, Sugar Cane Mulch, Blood and Bone, Organic Fertiliser
- \* Potted Plants \* Chickens, Ducks \* Oils for most occasions
- \* Gas BBQ refills 8.5kg for \$20.00

**IF WE DON'T HAVE IT JUST ASK & WE WILL SOURCE IT!**

ABN: 84 533 741 944



## OUR VISION

*"People of faith sharing God's love as we worship and serve in the community"*

**WHY NOT COME ALONG ON SUNDAY MORNINGS** when we have our 10am Service? We have a different Speaker each week, which makes it very interesting as there is something for everyone. The atmosphere is very friendly and welcoming, and after the Service we enjoy a cup of tea, coffee or cordial. The children (as well as the adults) also enjoy the cakes and biscuits. There is no shortage of conversation there.

ALL CHILDREN ARE WELCOME, and after staying in for the beginning of the Service, they then go to their own room, where they have a Special Time of learning and fun.

SMYG - SUNDAY MORNING YOUTH GROUP The young people in the Group meet at 10am with their Leader, in their own room where they are able to discuss and learn. They then join others for a cup of tea/coffee.

(As we experience warmer weather, the beautiful Garden Area will be a gathering place for this group).

There are various Groups to be involved in, such as BIBLE STUDY GROUPS, THE DRAMA GROUP, THE MUSIC GROUP, THE FELLOWSHIP GROUP and THE CRAFT GROUP.

### OPERATION CHRISTMAS CHILD (Samaritan's Purse)

The final collection and the Blessing of the Boxes took place at the Church on Sunday 2nd October at the 10am Service. FIFTY ONE BOXES have been collected and taken to the Warehouse where they are loaded onto a Container ready to be sent to the children in Third World countries.

A BIG THANK YOU to all those who have filled these Boxes.

FELLOWSHIP STALL at the Market on the 5th November will have lots of things for sale including some 'Pet Shop Toy's' in good condition, from \$1.00 each and also fresh herbs and cakes.

### NOVEMBER 23rd - CHRISTMAS DEVOTIONS

This will be the last meeting for the year, and members and friends will be bringing along grocery items to be placed in Hampers for needy families.

Enquiries about any of the above can be addressed to Sybil Winsor on 8280 7038



**Our next fire season's hazards  
have already begun to surface.**

Are you bushfire ready? Prepare. Act. Survive. For more information visit [www.cfs.sa.gov.au](http://www.cfs.sa.gov.au)



**Black Top Road, One Tree Hill**

**FUN, FAMILY FRIENDLY  
AND FREE**

**TRIVIA NIGHTS AT THE  
BLACKSMITHS INN**

**HOSTED BY FUNNY MAN**

**RICH NABERHOOD!!!**

**GREAT PRIZES TO BE WON!**

**SEATS ARE LIMITED**

**BOOK EARLY SO YOU**

**DON'T MISS OUT**

**Don't forget:**

**Tuesday Schnitzels from \$9.90**

**Thursday T-Bone Steak \$9.90**

**Available all day**

**To Book a Table**

**Ph: 8280 7666**

**BENJO®**

**CLEAN THE WORLD**

For product enquiries, demonstrations  
and all your enjo needs contact...

**Beni Hite**

**Ph: 8280 7815 or Mob: 0403 763 826**

**ONE TREE HILL**

**GENERAL STORE & POST OFFICE**

**PH: 8280 7020**

**Open 7 days**



## Crime Report – ONE TREE HILL Rural Watch – Offences reported between 18/09/11 and 19/10/11

<u>Between 16th and 26th September</u> Quad bike stolen from carport of premises.	Theft of motor vehicle	Toolunga Road, YATTALUNGA
<u>19th September (daylight hours)</u> Entry to premises by forcing rear door. Electrical items stolen from premises.	Residential Serious Criminal Trespass	Kentish Road, ULEYBURY
<u>Between 13 and 18th September</u> Shed broken into and tools and motorbike stolen.	Non-Residential Serious Criminal Trespass	Kentish Road, BIBARINGA
<u>Overnight 29th September</u> Entry to premises by breaking front door. Money taken.	Non-Residential Serious Criminal Trespass	Black Top Road, ONE TREE HILL
<u>5th October</u> Persons have entered a shed on property and damaged items within. Also graffiti placed on various parts of property.	Property Damage	Toolunga Road, YATTALUNGA
<u>Overnight 12th October</u> Rainwater tank graffitied.	Mark Graffiti	Jordan Drive, ONE TREE HILL
<u>Between 15th and 17th October</u> Entry by jemmying front door. Substantial amount of property stolen from residence and shed on property.	Residential Serious Criminal Trespass	Eaglenest Drive, BIBARINGA
<u>17th October (daylight hours)</u> Shed broken into and bicycle stolen.	Non-Residential Serious Criminal Trespass	McGill Road, ONE TREE HILL

As you can see by the above report there are still numerous offences being committed in our area. Some of these offences were committed on properties whilst the occupiers were away on holidays. If you are planning to be away from your property for any substantial time please ensure your neighbours are aware and ask them to keep watch on your place. It is also timely to mention that the majority of offences are being committed on rural properties and not within the township.

With the onset of summer it is imperative that you become even more observant in relation to vehicles and occupants 'hanging' around the area. Police have commenced Operation NOMAD where police patrols attend the area on extreme fire ban days and monitor movements of known arsonists. Remember to have a pen and paper in your car and note down any rego numbers of vehicles which seem 'out of place'.

As always if you have any information to assist with any crime issues in the area please call Police Communications on 131 444.



## SEPTIC TANKS PUMPED OUT

For good old fashioned service call

# 8283 3656

Or Trevor on 0417 000 365



## SEPTIC PUMPING SERVICES

Email: [septic1@bigpond.com](mailto:septic1@bigpond.com)

Web: [www.septicpumpingservices.com.au](http://www.septicpumpingservices.com.au)

## Sharkatax Bookkeeping Services

MYOB, Quickbooks & Cashflow Manager  
BAS Preparation & Lodgment  
Tax Orientated Bookkeeping—Shoeboxes Welcome  
General Bookkeeping, Invoicing, NIA Certified BAS  
Provider ATO s251L Compliant  
Be Ready For Your Tax Agent

Ph: Sharka on 8255 6253 or 0400 695 090  
or email: [sharkatax@bigpond.com](mailto:sharkatax@bigpond.com)



Wedding  
Engagement  
Naming Day



Special Birthdays  
including Children's  
Reunions  
Meetings or Other

Now on the web: [onetreehillhall.com.au](http://onetreehillhall.com.au)



One Tree Hill Institute  
Hall for Hire

Call 0459 105 045 or 8280 0000  
Email: [oth.hall@bigpond.com](mailto:oth.hall@bigpond.com)





**DISTRIBUTION 360 Pty Ltd**  
*Waste to Resources*

**Rubbish Bins  
and Mini Skips**  
from 2m<sup>3</sup> to 60m<sup>3</sup>


**Your Local  
Skip/Bin Provider  
Call Today!**

Daniel 0414 280 891  
Ken 0488 360 360



**D3**

## Advertising rates FOR THE GRAPEVINE

	Colour ads:	Eighth Page	\$30
		Quarter Page	\$60
		Half Page	\$150
		Full Page	\$350
	Black & White:	Eighth Page	\$20
		Quarter Page	\$40
		Half Page	\$100
		Full Page	\$250

Classified ads: Just \$8.00 -  
Great for promoting your Business or Garage  
Sales or Items for sale.

All ads need to be in by the deadline on the  
front cover.

Ph: 8280 7095 or

Email: oth.grapevine@bigpond.com

**One Tree Hill Scouts** Once again our local scout group has been out and about cooking up some delicious sausages at the OTH market last month. The delicious mouth watering aromas of the sausages encouraged many a market goer to buy a snag and help us with our fundraising efforts. Thank you everyone who visited us for your kind support.

Our different sections has also been so busy with both the Joeys and Cubs visiting the Aquadome and enjoying camaraderie around the campfire. The Cubs have been hiking, geocaching and even getting a bit tied up in knots in their endeavour to become great Cub Scouts. A fun evening was had by all at a lock-in at Tunzafun. The Scouts camped at Woodhouse, where they built their own forts and then had to protect themselves by using flour and water bombs. Our Scouts became rock stars for a night and enjoyed going to the movies along with our Venturers who also tried their hand at go-carting this term. There's so much to do and only so many scouting hours to do it in...Till next time Dawn



Pictured above are some of the Cubs & Scouts who managed the sausage sizzle held at the OTH Market last month.

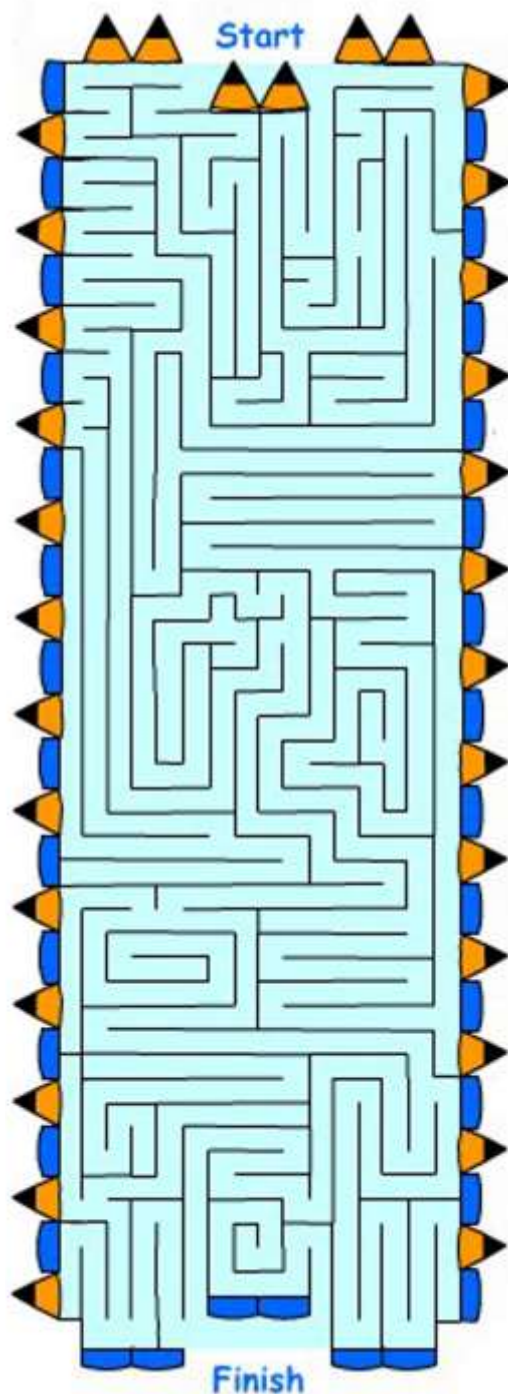
Far Right: Cub leader Steve with Helen, Brianah, Kane and Aaron learning the ropes. Scouts, Thomas, Jessica, Damien and Jacob rock stars for a night.



# Kids Page

I guess you are all settled back into the routine of school. Lets hope you finish off the school year with **great results from the hard work you have put in. It's been great to see the eager faces of those of you that have entered our baking competition, so start practising for the finale....Christmas themed Gingerbread!**

There are great prizes to be won so why not have a go? Also sharpen those pencils in readiness for our Colouring Competition which will be in the December edition of the Grapevine. I have included a scarecrow for you to practice on. Have fun. Do you have any Christmas jokes for the next issue of the Grapevine? If you do I would love to include them on your page. I am also open to any new ideas, just email the Grapevine at: [oth.grapevine@bigpond.com](mailto:oth.grapevine@bigpond.com) or drop me a line OTH Grapevine c/o OTH Post Office. Until next month, Auntie Bev.



Q: What do you call a nun who walks around?

A: A roaming Catholic!

Q: What fish do knights like?

A: Swordfish!

Q: How do you make a band stand?

A: Take the chairs away!

Q: What happened to the glass blower when he inhaled?

A: He got a pane in his stomach!

Q: Why don't grasshoppers go to the football games?

A: They prefer cricket!

Q: Why did the orange stop half way up the hill?

A: He ran out of juice!

Q: What did the hat say to the necklace?

A: You hang around and I'll go a head?

Q: What is white when dirty and black when clean? A: A blackboard!

Q: What happens when you annoy a clock?

A: It gets ticked off!

Q: Where do cows go when they are on a date?

A: The moo-vies!

Q: What do frogs drink?

A: Croak a cola!



### Horse Care Feeding to reduce moodiness

Supplements including Vitamin B1 are usually used to improve temperament (Be calm, Karma etc). But is this the only way? Consider the following facts.



- \* Magnesium reduces stress.
- \* Excess calcium ties up magnesium. Calcium and magnesium need to be in balance.
- \* Excess calcium increases muscle tenseness and soreness.
- \* Vitamin B1 is essential to absorb magnesium.
- \* Lucerne is very rich in calcium but poor in magnesium.
- \* Chestnut and black animals (of all types) require more magnesium and copper than greys and browns.
- \* Mares, especially those in season, require more magnesium than geldings.

Put this together and ask "Why does my chestnut mare, who gets a lot of lucerne become moody in spring?" the answer should be: "Because she is using more magnesium (in season) but is getting an excess of calcium (in lucerne)". Her muscles become tight and she becomes difficult to handle. Well, I don't know about you, but I am more testy when my back is sore. When I had an aged chestnut mare agisted with me I tried out my theory. For a month I added magnesium to her diet (I fed every weekday). Then for the next month I did not. Her owner said "please stop torturing my mare. You are changing her feed and she is not happy this month". I had not told her I was trying the experiment.

Magnesium can be added as Epson salts at a rate of about 1 teaspoon per day, mixed into the feed. It changed this mare from being difficult to ride and very stiff to happily doing flying changes every 3 strides while playing mounted games. Try it for yourself this spring and see if you can see a difference. Even if there is none, the Epson salts will not hurt the horse. By the way, you need B1 to absorb Magnesium, so keep it up too. If you have any horse query for Julie please email the Grapevine. Email: oth.grapevine@bigpond.com

## **Carpenter/Maintenance**

**Call for all of your carpentry and maintenance needs.**

- T Pergolas
- T Carports
- T Decking
- T Verandahs
- T Door/Window Frames
- T Renovations
- T Extensions
- T Facia Replacement/Repairs
- T General Maintenance



**Call for a FREE Quote today!**

**Ph: 0439 680 177**

**or Email:**

**qualitymodernimp@yahoo.com.au**

# **Raine & Horne®**



**0417 847 810**

davidk@rhasa.com.au

Raine & Horne North East  
1289 North East Road Tea Tree Gully SA 5091  
RLA 182438 ph : 83952233

## **FREE APPRAISALS**

**By Area Specialist**

**Thinking of SELLING!**

**Thinking of BUYING!**

**it's as EASY as 1,2,3**

**Call David & Jamie**



**0414 267 547**

jamien@rhasa.com.au

**SUMMER IS COMING, BEAT THE RUSH, WE HAVE BUYERS WANTING TO LIVE IN ONE TREE HILL AND SURROUNDING AREAS. CALL TODAY!**



## TEACH THEM TO *swim*

THIS SPRING AND FEEL MORE  
RELAXED THIS SUMMER WITH  
**YMCA AQUASAFE**

You'll feel more relaxed knowing that at a YMCA centre, our program is about more than just 'learning the strokes' it's about water survival skills that are relevant to you and your community. It's an essential part of keeping your child safer this summer.

Our friendly staff make learning to swim fun and making your child safer around the water this summer is easy. Enquire today and get your **FIRST LESSON FREE**.

**Aquadome at Playford**  
1 Crockerton Road, Elizabeth  
Phone: 8287 8807  
Web: [www.aquadome.ymca.org.au](http://www.aquadome.ymca.org.au)



**YMCA**  
We build strong **PEOPLE**  
strong **FAMILIES**  
strong **COMMUNITIES**

## CITY GAS CONVERSIONS



150 South Terrace Wingfield SA 5013

**NEW & USED UNITS - TANK TESTING**

Free Quotes for your car to be converted to gas.  
3 Year Warranty.

## The Northern Foot Clinic

Heel Pain, Sports Medicine, Aching Feet, Children's Feet  
Ingrown Toenails, Plantar Warts, Orthotic therapy, Mobilisation

*Pain relief today and prevention for your future*

- \* 109 Haydown Rd, Elizabeth Vale (onsite parking)
  - \* 16 Adelaide Road, Gawler (onsite parking)
- DVA, Hicaps. Medicare (GP approved only)

**8287 3888**

## NCPS INDUSTRIAL

Pumps, Generators, Hose & Fittings  
Servicing the One Tree Hill Area



Present this  
advertisement for  
15% off  
recommended  
retail price on  
DAVEY household  
pressure, sump &  
pool pumps also  
MEDO septic air  
blowers



U2, 1445 Main North Rd,  
Para Hills West S.A. 5096  
Ph: 8285 2344

Email: [sales@ncpsindustrial.com.au](mailto:sales@ncpsindustrial.com.au)  
Web: [www.ncpsindustrial.com.au](http://www.ncpsindustrial.com.au)  
(Opposite Bunnings Parafield)

## PROPEST 1800 24 22 21

management services

**We service any pest  
No problem!**

PO Box 684 St Agnas

Residing Humbug Scrub

- \* Termite/White Ant Removal \* Termite Baiting Systems
- \* General Pest Control \* European Wasp & Bee Removal
- \* Existing and Pre Purchase Property Inspections
- \* Weed Eradication \* Free Site Assessment

[www.propestcontrol.com.au](http://www.propestcontrol.com.au)

AS/NZS ISO 9001:2000  
QUALITY CERTIFIED COMPANY



## Bearded Irises Waterlilies Pond Plants

Available from  
**Yarrabee Garden  
& Iris**

Nursery open most  
weekends during October  
and November, and other  
times by arrangement

Phone 8280 7338  
or visit our website  
[www.yarrabee.net](http://www.yarrabee.net)  
for details

# E & A Vanin

## LOCAL PLUMBING SERVICES

DOMESTIC-COMMERCIAL-INDUSTRIAL

- General Plumbing Maintenance
- New Homes & Extensions
- Drains & Stormwater
- Bathroom Renovations
- Hot Water Service Changeovers

### REGISTERED MASTER PLUMBER

EDDIE VANIN PROPRIETOR

M: 0412 394 689

Home/Office 8280 7970

## Rob Green Security

**Servicing, Installation, Monitoring**  
**Your Local Technician**

Ph: 0419 398 346



### Steven O'Connor

**Naturopath, using Herbal and Nutritional**  
**Remedial Massage Therapist**

Dip App Sc(Ag), Adv Dip W Herb Med, Adv  
Dip Nut Med, Adv Dip Nat, Dip R Massage  
For chronic pain and alternative medicine  
using herbs and nutritional medicine

Health Rebates Apply

Kilberin Cornishmans Hill Road

One Tree Hill S.A 5114

82807003 0407820422



## "ADELAIDE NORTHERN VETERINARY GROUP"

**Drs. ALAN & ROBERT IRVING, B's.V.Sc**

Modbury—Salisbury—Elizabeth East—Elizabeth Park

Ph: 8280 7353 or M:0419 806 213



[www.adelaidenorthernvet.com.au](http://www.adelaidenorthernvet.com.au)

Email: [alanirving@internode.on.net](mailto:alanirving@internode.on.net)



For all your Automotive Repairs  
Call out Services

Available for Tractors and  
Earth Moving Machinery

Servicing the  
One Tree Hill area

**8283 0211**

**Auto Repairs For Farm Machinery**

49 Saints Rd. Salisbury Plain

## WOMBAT'S

- \* Bobcat & Tipper Service
- \* Excavator 4.5 tons
- \* Pig trailer & tipper (24tons)
- \* Concrete/Pavers prep & removal
- \* Post hole boring (350m-450m)
- \* Trench hole digging to (1200mm)
- \* Shed site prep
- \* Rainwater tanks prep
- \* Driveways
- \* Stock burial
- \* Civil work
- \* Retaining wall prep

**Phone: John Mancone**

**0417 456 656**

Uleybury





# It's Snake Time in the Adelaide Hills



So here we are enjoying spring weather in the Adelaide Hills but of course we are not the only ones. At the Fodder Store we have already been told of many snake sightings this season and there have unfortunately been a couple of horses and a calf that have potentially been killed by snakebites.

Australia is home to its fair share of the worlds venomous snakes and here in South Australia, the majority of venomous snakes found are the: Eastern Brown Snake (*Pseudonaja textilis*), Red Bellied Black Snake (*Pseudechis porphyriacus*), Copperhead snake (*Austrelaps syperbus*), Western Brown snake (*Pseudonaja nuchalis*) and the Tiger snake (*Notechus scutatus*).

Many people have a natural fear of snakes whilst others fear for the safety of loved ones, pets and stock that also live on their property. The snakes that live and hunt on your property reckon that they have every right to be there as well, however they will usually go about their business by trying to keep out of your way as much as possible.

Most of the time you will not even know that they are there by hiding or lying very still until a passing person has moved out of their vicinity. Unfortunately our cats and dogs often see them as fair game and this can lead to disastrous results and expensive vet bills.

These critters are however much like any other wild animal in that if they are cornered, feel threatened, are startled in some way or are just in a grumpy mood they will go into attack mode to defend themselves. Our venomous snakes all have one common built in attack mechanism, they can inject venom into their victims via their fangs and biting is what they will naturally do once they have decided that moving on is no longer an option for them to take.

It is important to realize that even juvenile snakes can inflict potentially mortal wounds and so conflict with these should be avoided just as much as with their parents.



Western Brown



Tiger Snake



Eastern Brown



Red Bellied Black



Copperhead

What are your options apart from doing nothing?

- \* Try to minimise their food source by doing what you can to keep rodents and small lizards away from the house. This might mean that you have to have a tidy up around the place by clearing the yard of old sheets of iron, other building materials and piles of compost.
- \* Don't have wood piles too close to the house.
- \* Watch leaving excess feed out for your pets and stock that will attract small rodents.
- \* Keep the area clear around water troughs on your property.
- \* Keep your shoes and boots up off the ground.
- \* Keep your garden areas tidy and free of fallen fruits that will attract rodents.
- \* Consider setting up snake deterrent and repeller systems around your house. We have sold several solar powered units already this season. They will work by sending pulses through the earth that set off the sensors of the snake. These pulses are sent using a certain pattern which automatically changes every two days so that the snake does not become too accustomed to the pattern of the pulse and therefore senses it as a new danger.

What should you do if you come across a snake on your property?

- \* Give it wide berth and do nothing to provoke it in any way.
- \* If you feel threatened or anxious about a snake and want it removed you should not try to kill or catch it yourself as it is said that this is when most snakebites actually occur to people. Professional Snake Catches are available that will come to your property and handle the situation for you. They are licensed under National Parks and Wildlife Act 1972 and will do what is required within the scope of the act. They can be found in the Yellow Pages or you can contact the DENR Fauna Permit Unit (Phone: (+61 8) 8124 4930)

According to the Department of Environment and Natural Resources: In South Australia, all snakes are protected under the National Parks and Wildlife Act 1972 (NPW Act). Where a snake has attacked or is attacking a person it is lawful to humanely kill the offending snake without any permit or authority under the NPW Act.

Much of the information provided here was found on the Department of Environment and Natural Resources web site at:

[http://www.environment.sa.gov.au/Plants\\_and\\_animals/Living\\_with\\_wildlife/Snakes](http://www.environment.sa.gov.au/Plants_and_animals/Living_with_wildlife/Snakes)  
From this site you can also go on to download a very good "Snake Safety Factsheet"

\*\*\*\*\*



## Para Wirra Open Day

On Sunday 16th October, the Friends of Para Wirra hosted an Open Day at the park, with free entry into the park, free face-painting for the children, a Nature Touch Table, colouring sheets and historic displays. Gawler Natural Resource Management office also had a display, with brochures and booklets on everything from keeping horses sustainably to identifying and managing weeds.

Also present were representatives from Greening Australia and Urban Forests, including Pauline Frost, a long-term volunteer of those organisations. Brochures and information about these wonderful schemes which do so much to bring back the native bush were given out.

There were two scout groups in attendance, this was organised by Craig Wall who is District Scout Leader and is connected with the First Salisbury Scouts. One Tree Hill Scout Group organised a demonstration of tent erecting and structures made from branches and rope, Gawler Rotary Club provided delicious cakes, tea & coffee for sale, Playford Rotary Club cooked up yummy sausages and the South Para Nursery (based in SA Water complex near Williamstown) sold a selection of local native plants, with manager Yvonne Gravier giving advice and information. Many thanks to the photographer for the day Alberto Giurelli.

St John Ambulance was in attendance, and fortunately was not needed for an emergency, so Wally the driver was able to enjoy the surroundings and was well fed with sausages, cakes and coffee.

The weather was gorgeous, sunny but not too hot, and many of the more than 600 visitors to the park enjoyed picnics around the Lake or the North Oval, as well as various other picnic areas in the bush, and exploring the various bush walks was also popular.

Locals Terry Allen on the guitar and squeeze-box played merry tunes and Mathew Tilley disguised as a kangaroo helped to entertain the visitors, as did our own Friends of Para Wirra Nadia Jankovic and daughter Alex. They enjoyed themselves as much as the audience!

Altogether a great family day, the first of its kind in the park, and a fore-runner of the planned event next year when we celebrate 50 years since the park was opened.

The Friends of Para Wirra were delighted with the public response and would like to thank all those who helped make it a success.

Pictured on the front cover are Matthew Tilley as a kangaroo with Sybil and Doug Winsor and also entertaining some children, Terry Allen with his squeeze-box, Iris Lee who did the free face painting. Photos of the displays are also featured.

If you have a Community event that you would like to see published whether it is to advertise or to report on the day we'd love to hear from you. Email: [oth.grapevine@bigpond.com](mailto:oth.grapevine@bigpond.com)

ONE TREE HILL/ YATTALUNGA, 25 Toolunga Road



Picture Perfect Presentation!!

\$699,000



- 4 Bedrooms, main with walk-in robe + ensuite w spa bath
- Beds 2 + 3 w built-in robes, large lounge
- Open plan family, formal dining/study w sliding door
- Kitchen, meals area w sliding door access to verandah
- Ducted evaporative air con, combustion heater, fans
- Large rural shed w kitchen, shower and toilet
- Two Colourbond stables, carport, orchards
- 17 Acres, A-frame verandah, 54,000L r/w tank

Local Agent!!

Having Lived in the area  
for the past 28 years!



Call for your

**FREE**

Appraisal TODAY!

**8287 5511**

Genuine Buyers Waiting!!!

**Ray White**™

Keith Emmerson 0419 844 015

Elizabeth

## Kamcheyenne Limousin

Shillabeer Road, One Tree Hill



We would like to extend our gratitude to the many One Tree Hill residents who have supported our stud with sides of beef sales or the purchase of cattle through our starter herd program.

The stud is also very excited to announce we are in the process of being accredited for:

**Humane Choice – true free range program through the Humane Society International Inc.**

To book for the purchase of Limousin cattle or sides of beef sales for late 2011 and 2012 or to find out more about our operation please call Sarah 0402 099 106 or John 0427 131 018.

**SPRINT**  
AUTO PARTS

PROUDLY  
SUPPORTING  
SA!

EVERY Car, EVERY Part, EVERY Day.



SPRINT has all your parts & accessory needs!



Fluids!

Hard Parts!

Car Care!

With 35 stores, we're always  
just around the corner.

PROUDLY SA OWNED & OPERATED SINCE 1984

35 STORES - OPEN 7 DAYS\*

GET DISCOUNTS ON PARTS & ACCESSORIES!

BECOME A SPRINT AUTO PARTS VIP CLUB MEMBER

For your nearest store, go to [www.sprintautoparts.com.au](http://www.sprintautoparts.com.au)



EVERY Car, EVERY Part, EVERY Day.  
For your nearest store, go to [www.sprintautoparts.com.au](http://www.sprintautoparts.com.au)



# Country Estates

RIA 100925

GOULD CREEK/ONE TREE HILL 10 acres \$765,000

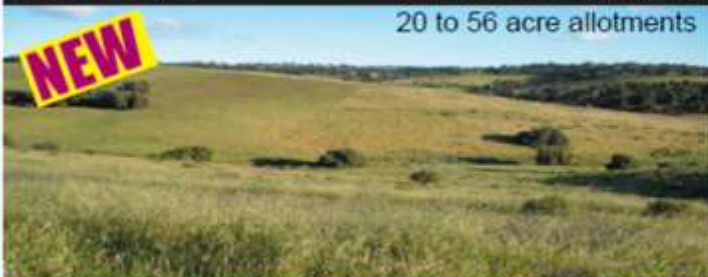
**NEW**



ONE TREE HILL from \$360,000

20 to 56 acre allotments

**NEW**



6 New Land Allotments to Choose From

Providing the Highest Standard of Ethics & Service ~ [www.countryestates.com.au](http://www.countryestates.com.au)

## Hills & Country Specialists

Shop 1&2 Birdwood Plaza,  
20 Shannon St, Birdwood SA 5234

**PH 8568 5105**

How to Get the  
**Highest Price**  
for Your Property



A book that could make  
you **THOUSANDS** of  
dollars.

**Yours FREE**

This book shows how to present your property for sale  
and gives you tips on how to select, and work with, a  
real estate agent.

Whether you are an experienced property  
seller or a novice, this book could make you  
**THOUSANDS** of dollars.

It's yours **FREE** - no charge or obligation.  
Contact us now and we will send you a copy.

ONE TREE HILL

2,599m<sup>2</sup>

\$599,000



## Air Conditioning & Complete Electrical



Servicing the One Tree Hill Area

Deal Direct With Local Tradespeople

Phone for a **FREE** Quote Today

**Air Conditioning & Electrical Installations**

**\*We can Supply & Install Wall Split Systems  
Or Ducted Split System Air Conditioners\***

**All Brands Available**

**Call Now & Have Your Unit Installed Before Summer**

**Phone: Peter, Ryan or Leon Moyle**

**0407 463 310 A.H. 8280 7442**

Email: [completesplits@gmail.com](mailto:completesplits@gmail.com)

PGE139465 L051080

## COMPLETE **HIRE** Equipment & Trailer

**KANGA LOADERS - BOBCATS - EXCAVATORS**

**TRAILERS ALL TYPES INCLUDING TIPPERS**



**HORSE FLOATS**

**TRUCKS & TRADIE GEAR**

**EARTH MOVING REQUIREMENTS**

**\* CARTING \* SPREADING \* RUBBISH REMOVAL**

**WE CAN  
DELIVER!**

Phone: Jason on 0418 823 287  
or John on 0410 104 418

Lot 10 Paxton Street, Willaston  
ABN: 51 008 178 979

## COMMUNITY DIRECTORY

Hall Hire	Ph: 8280 0000 or 0459 105 045
Council Member	Joe Federico 0417 016 164
C/Member & JP	Andrew Craig 0417 016 160
Country Market	June B 8287 3306
Cricket Club	Brian Walter 0418 815 047
Friends of P/Wirra	Patsy Johnson 8280 7279
Home Assist	Playford 8256 0355
North Lakes Golf	Charlene 8284 0655
N/ Hills Pony Club	Kylie Scheffers 0422 882 184
OTH Grapevine	Editorial Team 8280 7095
OTH Progress Assoc.	Secretary 8280 7095
OTH Playgroup	Monday 0448 354 990
OTH Playgroup	Wednesday 8284 4555
OTH Primary School	8280 7027
Playford Band	Ivor McLatchie 8280 7214
School of Dance	Diane McLean 8280 7569
Scout Group	Trevor 8255 3155
Senior Citizens	Lance Walter 8280 7259
Soccer Club C/P	Ray 0423 029 626
Soccer Club Registrar	Sonia 0413 452 993
Tai Chi	Gail 8284 0022 or 0402 440 710
Tennis Club	Gary 8280 7067 or 0415 399 658
Wine Grape Growers	
(OTH Region) Ph: Fay 8284 0201 or Natalie 8280 7335	

## Willaston Country Music Club



**Held the 1st Sunday of each month at the Willaston Football Clubrooms**

**Gawler River Road, Willaston**

**Time: 12 noon till 5pm**

**Meals & bar facilities available plus tea/coffee**

**Fully air-conditioned Disabled access**

**Door Prizes, Raffles, Members Prizes**

**Entry \$9.00 non members \$6.00 members**

**Web site: [www.willastoncountry.com](http://www.willastoncountry.com)**

**Future events:**

**November 6th**

**Band - Bill Bedford & Country Roundup**

**Guest artist - Danny O'Brien**

**December 4th**

**Band - J.J. Shannon & Winchester**

**Guest artist - Sonia Prime**

**January 26th**

**Australia Day Special Band - Kindred Spirit**

**Guest artist - Paul Thompson**

**Contact Lyn on 0418 829 670**

**for bookings or queries**

## One Tree Hill Junior Baker Competition

Conditions of entry: The item of cookery to be submitted along with size and quantity will be published in the Grapevine in the month prior to the One Tree Hill market day. One entry per person.

This will allow for seasonal baking such as Christmas and Easter.

Entries are to be delivered to the One Tree Hill Junior Baker's table at the market between 9am and 9.30am.

Paper plates will be supplied and entry cards including entry number will be attached.

Judging will commence at 9.30am. There are 2 age categories: 1) Ages 5 to 8 years 2) Ages 9 to 13 years.

There is a 1st, 2nd and 3rd prize awarded in each category. Entries can be collected along with the prizes at 1pm.

Prizes are 1st: Blue Ribbon and \$15.00 2nd: Red Ribbon and \$10.00 3rd: Green Ribbon and \$5.00. How to enter:

You will need to email ([oth.grapevine@bigpond.com](mailto:oth.grapevine@bigpond.com)) or complete the entry form and mail to One Tree Hill Progress Association c/o the Post Office One Tree Hill SA 5114. Or drop it into the General Store.

You must include your name, age and phone number. Your November entry form for Chocolate Cup Cakes must be received by Thursday (3rd November) prior to the Saturday Market on the 5th November.

## December is Christmas Themed Gingerbread Decorated



Name	Age	Phone

October proved to be even more successful than September with more entries than previous months. Well done to all that entered the bake off, we had muffins presented in a variety of sizes and flavours.

Winners in the 5-8year group 1st: Daniel 2nd: Cody 3rd: Maddison.

Encouragement Joanna, Abigail, Caitlyn and Joshua.

Winners in the 9-13years: 1st: Brianah 2nd: Elle 3rd: Samuel. Congratulations to all that entered it was great to see so many excited faces on the children. Special thanks to our judges Joe, Pam and Cassie.

Photos of some of the winners are on page 3. Keep baking and bye for now. Tracey.





## GAWLER MEDICAL CLINIC

**Dr. Barry Darlington**

**Dr. John Salagaras**

Accepting new patients, usually on the day.  
Mix of male and female Doctors.

Dr. Marshall, Dr. Tiong, Dr. Smit, Dr. Ehsan,  
Dr. Horwood, Dr. Romina and Dr. Kaur.

- ✦ Men's Health
- ✦ Women's Health
- ✦ Children's Health including immunization and Health Checks
- ✦ Family Planning including Mirena insertion
- ✦ Allergy Testing and Desensitisation
- ✦ Mental Health
- ✦ Skin Cancer Checks

Mon-Fri 8am-5.30pm Thurs 8am-7pm Sat  
9.00am-11.30am.

2B Murray Street (Opposite Cinema)

Gawler.

**PH: 8522 1844**



Accredited  
General Practice

Once there were 2 old buddies, Sid and Jim who were living in a rest-home. One day, they were playing gin rummy, and Jim said, "Tomorrow's my birthday. I'll bet you can't guess how old I'll be". "I bet I can" Sid said. "As a matter of fact, I can look at the wrinkles on your body and tell you exactly how old you are". "There's no way you can tell with me." scoffed Jim. "Twenty bucks says you can't guess how old I am". "You're on" Sid said,. "Now take off your shirt". Jim took off his shirt, and Sid walked around him, inspecting the wrinkles on his chest and back. Sid ordered, "Now take off your pants", "and your underwear". Jim stood naked. "Now bend over and touch your toes", Sid said. "And don't move". Jim bent all the way over, Sid walked behind Jim and said, "You're 94 years old". "That's amazing!" Jim said, "How could you tell? ". You told me yesterday!



## ELECTRICIAN

**Justin Kerkman**

A Class Electrician & Local Resident

Lic. No: PGE 230505

Safety Switches & Faults  
Lighting / Fans / Sensors  
Sheds / Update Switchboards  
Generator Connections/Fire pumps  
All Jobs, Small & Large

Phone: 0412 880 532 or 8280 7212

*"Your Local Electrician"*



## Kenton Communications

- Data & Phone Outlets
- Digital T.V. antennas
- T.V. Outlets
- T.V. & Home Theatre Installation
- Optic Fibre Cabling & Terminating
- Telephone Systems
- Domestic & Commercial



Contact Brett Harding - **0400 783 196**

Email: [brett@kenton.com.au](mailto:brett@kenton.com.au)

ABN 98 474 668 522 Cabling Licence No. T28396

**GOVERNMENT ENDORSED ANTENNA INSTALLER**



No Job  
Too Big or  
Too Small

**Professional Tree & Stump Service**

**Call Brad for FREE QUOTES**

**on: 8365 8000**

**Don't Forget to ask for our  
Special Grapevine Price....**



## CATTELL CREATIONS

*Specialists in*

**Stained Glass**

**Leadlight**

**Splash Backs**

**and NOW assorted**

**Furniture at very  
reasonable prices!**



**Lot 12 Black Top Road**

**One Tree Hill**

**Call Dave**

**8280 7800**



## AUTO

### **Frank's**

Blacktop Auto  
General

Engineering,  
Repairs to  
4-Wheel Drives,  
Prestige Cars EFI  
& All Mechanical  
repairs.

Black Top Road

8280 7255

0410 490 246

## BEAUTY

**BEST  
DRESSED  
MOBILE  
TAN**

**Spring Special  
\$20.00**

**Call Lea**

0411 416 011

Conditions may apply

## ELECTRICAL

**ROGER  
GIRDHAM  
ELECTRICAL**

**For all your  
Electrical  
Installations &  
Maintenance  
Jobs**

**Call Roger**

0417 853 863

Or: 8280 7788

## GARDENING

Geoff Jacobson for  
all of your gardening  
needs

- \* Lawn Mowing
- \* Tree Lopping
- \* New Lawns
- \* Fertilising
- \* Weed Control
- \* Pruning
- \* Rubbish Removal
- \* Landscaping
- \* Shed Cleanouts

Ph: 131 546 or  
M: 0407 733 832

## LANDSCAPING

**Inspiring  
Landscapes  
Complete Garden  
Design  
Build & Maintenance  
Concrete Curbing,  
Paving, Lawns,  
Irrigation, Drainage,  
Lighting,  
Tight Access  
Earthworks  
Ph: Rick on  
8280 7777 or  
M: 0418 829 332**

## MAINTENANCE

**WARNERS  
HOME  
MAINTENANCE**

- ♦ Gardening
- ♦ Odd Jobs
- ♦ Painting
- ♦ Pruning
- ♦ Gutter  
Cleaning
- ♦ Basic Home  
Maintenance

CALL PETE:

0433 619 108

## MOBILE HAIRDRESSER

**Mardi's Mobile Hairdressing**

- \* Ladies, Men's & Children's Cuts
- \* Razor Cuts
- \* Foils, Colours
- \* Perms
- \* Blowdrys, Sets
- \* Upstyles



Sick of using a straightener,  
non-chemical hair straightening using  
pure Keratin.

As well as straightening your hair  
Keratin also conditions - lasts 6 months,  
short hair starts from \$150.

Call Mardi on 0417 841 678

## PEST CONTROL

**Best Pest  
Control**

- \* Spiders
- \* Earwigs
- \* Millipedes
- \* Bees
- \* Ants
- \* Flies
- \* Termites

Call Paul on

0418 893 411

## PLANTS

**Dealtry Native  
Plants**

**Wholesale**

Trevilla Rd, (Off  
Frank Barker Rd)

OPEN 1st two  
weekends each  
month 10am-4pm.  
Plants from \$1.00  
Ph: for directions.

Ph: 8280 7079

0402 010 877

Gift Vouchers  
Available

## ROAD GRADING

Road Grading  
in One Tree Hill  
and the  
surrounding  
areas.

Call for a FREE  
quote for all  
grading and road  
maintenance  
needs.

Contact Merv  
0428 261 170

## YOGA

**THE YOGA  
BARN**

Weekly Hatha  
Yoga Classes  
Mon & Wed  
7 - 8.30pm

Friday Morning  
10 - 11.30am

Bookings are  
essential as space  
is limited.

Call Kim 8522

3776 or 0412

192 076



### **News from Nick Champion MP**

#### **Federal Member for Wakefield**

**Nick Champion supports household assistance  
for Clean Energy Future**

Nick has welcomed the passage of legislation that will provide financial assistance to households and help people do their bit for climate change. "The Government's plan to put a price on carbon will protect our economy, protect our environment and provide households with proper assistance as we move towards a clean energy future" says Mr Champion.

**Under the Government's Clean Energy Future Plan:**

- \* Every taxpayer with an income below \$80,000 will receive a tax cut, with most getting at least \$300 a year
- \* Pensions will increase by \$338 per year for singles and \$510 per year for couples.
- \* Commonwealth Seniors Health Card Holders will receive an extra \$338 per year for singles and \$510 for couples
- \* Government allowances and family assistance payments (such as the Family Tax Benefit A) will increase by 1.7%.
- \* Pensioners will receive a lump sum advance payment of up to \$250 for a single pensioner before the carbon price begins, to make sure they have extra money in their pockets to help meet the price impacts.

For more information about the Clean Energy Future Plan you can visit the web page at:

<http://www.cleanenergyfuture.gov.au/clean-energy-future/our-plan/>

### Playford Council Contact Details

24 hour Emergency & Lost/found dogs

8256 0333

General Enquiries and Burning Permits (seasonal )

8256 0333 Email: [playford@playford.sa.gov.au](mailto:playford@playford.sa.gov.au)

Libraries: Elizabeth

8256 0334

Munno Para 8254 4600

When telephoning council with a request please remember to get a Customer Registration Number (CRN) to ensure registration and easy identification of your communication.

You can also phone or email your local Councillors.

Joe Federico Ph: 0417 016 164

Email : [jfederico@internode.on.net](mailto:jfederico@internode.on.net)

Andrew Craig Ph: 0417 016 160

Email : [adcraig@ihug.com.au](mailto:adcraig@ihug.com.au)



## Community Notice Board

Do you have an upcoming Community event or a special announcement that you would like printed on this page? Keep notices as brief as possible please.

Email or call with your details. Email: oth.grapevine@bigpond.com Phone: 8280 7095

Please note deadline date on the front cover for each edition.



Pictured below is Tracey who is a member of the OTH Progress Association and who organises and prepares for the Junior Baking Competition.

Tracey is doing a wonderful job with the running of the Junior Bakers event which is held each month at the OTH Market. Full details of the competition are on page 17.

Tracey was presented with flowers from Progress to express their deepest sympathy on the passing of her Mum Jan. (See on the right for further details) Jan's prize winning recipe for cream puffs is on page 3.



Jan Grantham

21.08.1988 - 25.09.2011

Our deepest sympathy go to the family of Jan who passed away recently. Four of Jan's children reside in One Tree Hill including Pam, Geoffrey, Donna and Tracey along with their partners and children. Jan was a much loved and respected Mother of 8 children and loved Nanzo of 15 grandchildren and 2 great grand children.

She will be sadly missed by all that knew her.

One of Jan's specialties was entering her delightful cooking at the Royal Adelaide Show where she took out 1st place in the Cream Puff section. This award winning recipe was included on her memorial card and it also appears on page 3 with kind permission from her family.

### Annual Golf Day



WHEN: November 13th

COST: \$30 members  
\$50 for non members

Enquiries to the committee of the Blacksmith's Inn Patrons Club who are organising the event.

### Next Country Market

Saturday 5th November  
(9am-1pm Approximately)  
at the One Tree Hill Institute  
Black Top Road.

Great variety of goodies  
available for Christmas gifts  
**and also the Junior Chef's  
Chocolate Cup Cake judging.**

## CHILEAN NEEDLE GRASS INFORMATION DAY



What: Field Day

When: November 5th 2011

Time: 9am to Midday

Where: Crosshill Road  
One Tree Hill

## FOLLOW SIGNS ON THE DAY

PROGRESS General Meeting - Thursday November 10th at 7.30pm.

Venue: One Tree Hill Institute, Black Top Road, One Tree Hill.

New members are very welcome.

