

# One tree hill grapevine



This is a free community Newsletter.  
However a Gold Coin Donation to the Piggy Bank in General Store,  
Post Office or Fodder Store would be appreciated.



June - Volume 35 - Edition 5- 2012

Deadline for the July Edition is Friday 22nd June 2012

## FAREWELL TO OUR LITTLE MATE KENDRA

Quite a few folk on McGilp Road would be familiar with the koala that has been living in the area over the past few months. She seemed to have a few favourite trees and would travel from one to the other regularly ....sometimes seen walking down the middle of the gravel path, unfazed by other walkers or the dogs in their yards (wondering what the heck this small creature was!)

Though it may have looked rather bizarre 'modern art' installation to some, the many water bowls left out along the path in various yards were refreshment stations for this little koala.

Just the other weekend I was sitting in my lounge room and could see "Kendra" out of the window, what an amazing place to live. (as we had named her—though I'm sure that each of her 'fans' had a different name for her)

On Saturday 5th May I arrived home to find "Kendra" curled up on the ground. She appeared very lethargic and her front paws were red raw. After many calls to various places, the lovely Hazel from "Native Animal Network" arrived. After telling Hazel about the water bowls, Hazel mentioned that koalas are prone to kidney disease, which may be a clue as to what was happening with Kendra.



*Kendra in happier times  
at McGilp Road*



She commented that "Kendra" indeed was very unwell, and that she would take her straight to the Birdwood Vet for assessment.

Later that evening I got the following text from Hazel. "little koala girl was very sick. She was skin and bone and had been ailing for some time now with renal failure. Too weak to climb, the fur missing on her hands was consistent with her falling down a tree trunk—trying in vain to hang on. She slipped away quietly and is no longer suffering....."

So sad that this had to happen, but a big thanks to Native Animal Network for their help. Hazel was genuinely pleased that everyone in the area had been keeping an eye out for this little Koala, and urged us all to continue helping to keep safe our native wildlife. Native Animal network's

website is [www.nansa.org.au/](http://www.nansa.org.au/)

*Thank you to Vanessa for submitting this story to us, if you have a story that you would like published send it to us at the Grapevine and subject to availability it will be printed.*

*If you find an injured or sick animal call Native Animal Network on either 8280 7223 or 8524 5060*

### EMERGENCY NUMBERS

**Police: 131 444**

**Ambulance & Other Emergencies:**

**Country Fire Service: 000**

**Station: (When manned) 8280 7412**

**Hospital: 8182 9000**

**000**

**General Business: 8280 7055**

**Bushfire Info Hotline (24hr): 1300 362 361**



[www.cfs.org.au](http://www.cfs.org.au)





Welcome to the June issue of the Grapevine. Hopefully you are all keeping warm and not suffering with colds.

Winter certainly has come early this year. The rain has been wonderful to fill up our reservoirs and also keep the garden going, but have you noticed all of the weeds coming up overnight. With a bit of luck we have a few sunny days to attend to chores outside.

This month we have some handy pruning tips from Anne Dealtry who runs the local native nursery. We also have some helpful hints for using a chainsaw from Mark at the Fodder Store. There are also some tips on rose pruning, the article makes the daunting task sound easy. We should all learn something from the articles to make this time of the year easier.

Once again we welcome new advertisers to the Grapevine, it's proving to be quite popular of late with new enquiries each month. Please keep in mind that you have to be a local or have a business in the town to advertise with us.

**Mailing Address: P.O Box 196, One Tree Hill, 5114**

Pictured on page 15 are some of the many winners of the Easter Colouring Competition.

Office Works Elizabeth were so generous donating all of the prizes for the competition.

Office Works also kindly donated the cost of enlarging and printing copies of old photographs for the Anzac Day Dawn Service. The OTH Progress Association and the Anzac Committee are very grateful for their generosity.

We have plenty of puzzles to keep the kids occupied, the theme this month is the Olympics. It won't be long until we are all glued to the TV and cheering on our athletes. Lets hope that it is a successful Olympics for London.

Don't forget you can look at the Grapevine on line, just go to [www.onetreehillhall.com.au](http://www.onetreehillhall.com.au) and go to "About Us" and you will find the editions at the bottom of the page.

Until next month, the Grapevine Team.

**Phone: 8280 7095 Email: [oth.grapevine@bigpond.com](mailto:oth.grapevine@bigpond.com)**

## Letter from the President—June 2012

The One Tree Hill Progress Association conducted its Annual General Meeting on Thursday 10th May 2012. The past year has been one of consolidation, with a small but active committee working very well together.

We accomplished some major projects during the year with both the Anzac Day Dawn Service and the Family Picnic Day being very well attended and supported by the local community. These two major events incorporated the invaluable assistance of many of the town's different community groups, which is in keeping with the spirit of living in the One Tree Hill community.

I was re-elected President for a further year, along with June Owens as Secretary and a Committee of : Tracy & Stuart Manser, Dave Campbell, Pat Jones, Bill Sims and Kay Ellis.

Bev has agreed to continue as the Grapevine compiler and along with the team and the efforts of the folding group, this publication continues to grow and inform the local community.

Pat Jones is the Hall Manager and doing a fine job of keeping the hall spick and span and a welcoming venue for hire.

With Winter approaching, many of the committee are taking the opportunity to head off in various directions for a holiday. Hence there will be no Progress meeting in June - see you on July 14th at 7.30pm at the Institute.

A big thank you for all those who contributed in any way to the successful operation of the Association for this year.

We look forward to another year of growth and an increase in activities.

Thank You

Ian Slater President, OTH Progress Association

Email: [oth.progress@bigpond.com](mailto:oth.progress@bigpond.com)

Or Phone: 8280 7095

**P.O. Box 196, One Tree Hill, 5114**



**Nick Champion MP  
Federal Member for Wakefield**

The editorial team of the One Tree Hill Grapevine regularly pop into the office of Nick Champion MP with the latest edition of the Grapevine. Nick appreciates reading the latest news from the area and congratulates the hard working team that tirelessly work together to produce such a valuable resource for the community.

On a recent trip to the office, June Owens commented on some of the military posters that were up on the walls and said that the local Progress Association and Anzac committee would value something similar. Office staff then made contact with the Department of Veterans' Affairs and were able to gather some materials that hopefully will be of benefit to the Association and their Anzac Display.

## Read the Grapevine on line

**If you haven't had a chance to see the Grapevine on line please go to the site:**

[www.onetreehillhall.com.au](http://www.onetreehillhall.com.au) and go to "About Us", scroll to the bottom of the page where you will be able to select the one line edition of the Grapevine.

**This is a great way to share local news with friends and family who can't get a hard copy of the Grapevine. Happy reading.**

\*\*\*\*\*

This newsletter is published by the One Tree Hill Progress Association. Email: [oth.progress@bigpond.com](mailto:oth.progress@bigpond.com) Ph: 8280 7095

The views expressed in this newsletter are not necessarily those of the One Tree Hill Progress Association.

Its purpose is to share local news, views and events. Advertisers are responsible for the accuracy of the content of their advertisement.





# Easter Junior Chefs

Once again the Junior Chef Competition held at the OTH Market on Saturday 5th May attracted some great entries.

The young chefs are certainly very talented.

Winners were:

5 - 8 Years      Kiahnah

9 - 13 Years      Caitlyn

They are pictured on the right with their Easter Creations using chocolate.

Congratulations, we are looking forward to the Cup Cakes at the market on Saturday 5th June.

Entry forms must be received by Thursday 31st May.



## Long term local resident, Chas Adlard recently won acclaim

Long term local resident, Chas Adlard recently won acclaim in the EPSON International Pano Awards – Panoramic Photography 2012 – winning five Bronze Awards.

His work with Georama has produced some spectacular results. Virtual tours containing interactive 360-degree photographs give businesses outstanding prominence on the Internet. Marketing has never been easier and examples of his work can be seen at <http://georama.com.au>

Property owners too may enjoy sharing their homes with prospective buyers or relatives interstate or overseas. The Georama website has many examples of interactive experiences. Premises displayed as 'virtually real' is just like being there!

During the coming winter months Chas intends to promote the One Tree Hill neighbourhood and businesses as part of a community virtual tour. This tour will of course feature the One Tree Hill township and Yattalunga, Humbug Scrub, Uleybury, Bibaringa and Sampson Flat businesses and attractions. Chas' sensational Para Wirra Recreation Park virtual tour for the Department of Environment and Natural Resources has attracted many more visitors to our beautiful district. <http://georama.com.au/parawirra>

*Pictured below is one of the fabulous shots from the web page. This is truly a great site to visit.*







## **Incident Report**

This month has seen several multiple car accidents, closing roads and consuming many hours of CFS time in what is usually one of the quieter months. The worst thing is that all of them could have been avoided with a bit of common sense. Even small road accidents cause trauma not only to the people involved, their family and friends but also to the members of the Emergency Service who attend. As a 20 year veteran of the CFS my biggest fear is arriving at an accident and finding a friend or worse, a family member involved.

The weather is getting worse, roads are slippery, and the fog is setting in. It doesn't take much to turn your lights on and drive your car to suit the conditions. Remember it's better to get there late than not at all.

## **Reminders**

The official fire season has ended but there are still council restrictions in place. Please ensure you are familiar with the Council restrictions on lighting of fires in your area.

A pamphlet is available from the Playford Council explaining all the different requirements.

As the colder nights are starting to become apparent, please remember to have your chimney/flue checked for excessive build up of soot etc. Chimney fires can be very disconcerting.

Remember to start planning next year's clean up, it is always better to do the hard work in the cool weather.

For general information please contact OTH Duty Phone of **8280 7055** or **1300 362 361**

## **Councillor's Report by Joe Federico**

The Council's Long Term Financial Plan and Draft Annual Business Plan 2012/13 are now out for public consultation. This is your opportunity to comment on where you would like to see your rates spent and how much you would like to see them increase by.

There will be a Community Cafe at the Playford Civic Centre, Great Hall on Wednesday the 6<sup>th</sup> of June, between the hours of 7.00 to 8.00pm. Please take this opportunity to attend and send a clear message to Council Staff and Elected Members as to what the rates should be (suggested 9.1% increase) and where they should be spent e.g. Core Services.

Cr Joe Federico Phone: 0417 016 164  
Fax: 8280 7963

*Full Council details on Page 19*



If you have any concerns or issues with or about our City, please in the first instance phone 8256 0333 and or send your e-mails to [playford@playford.sa.gov.au](mailto:playford@playford.sa.gov.au) and cc to [crjfederico@playford.sa.gov.au](mailto:crjfederico@playford.sa.gov.au) this will ensure that council sees your concerns and then forwards your e-mails on to me. If you are uncomfortable with council viewing your comments then please e-mail me at [jfederico@internode.on.net](mailto:jfederico@internode.on.net) if subsequent to that approach you do not receive a timely or satisfactory result please feel free to contact me personally. However I cannot guarantee that I will be able to get any better results but will at least have council reassess their position and provide an explanation as to their resolve and in some cases if not most, reach a compromise that is acceptable to all parties concerned. Council's 24 hour phone number is 8256 0333 for all your enquires and or requests. Remember to get a Customer Reference Number (CRS) to ensure registration and easy identification of your communication.

Most people who call at your home will be genuine, but sometimes someone may turn up unannounced, with the intention of getting into your home or deceiving you into giving them money, these people are known as 'bogus callers'.

- \* 'Bogus callers' may be smartly dressed
- \* They often claim to be from the council, the police or a utility company
- \* They may just ask for a drink of water, to wash their hands or use your telephone in an emergency
- \* They may claim to have lost a pet, or a ball in your back garden
- \* They may be men, women or even children, but all have one thing in common, they are very convincing and persuasive
- \* Sometimes they work in pairs and whilst you are talking to one at the front door, an accomplice may be trying to enter through an open window or unlocked back door
- \* 'Bogus callers' may claim to be builders or gardeners who will try and trick you into paying for unnecessary work. You should never agree to have work done by someone who is just passing by as the work will probably not need to be done at all.

## **Bogus Callers**

Simple strategies you can implement to protect yourself if you have a bogus caller are: Lock, Stop, Chain and Refuse.

**Lock:** Keep your doors locked.

**Stop:** Before you answer the door, stop and think if you are expecting anyone, then look through a spyhole, window or screen door to see who it is.

**Chain:** Even if the caller has a prearranged appointment, check their identity card carefully - if you doubt their identity look up a phone number in the phone book and ring to verify the caller's identity. Do not use a phone number on the identity card, as this may be fake.

**Refuse:** Entry to unexpected callers.

If you suspect this person is still up to no good, call the Police on 131 444.







More Quality homes brought  
to you by One Tree Hill's  
Best Selling Agents



Lot 202 Burg Rd,  
GOULD CREEK  
6 Beds, Office, 4 Baths,  
Pool, 5 acres.  
\$925,000 to \$940,000  
Fay Hull: 0407 962 884

366 Bassnet Rd,  
HUMBUG SCRUB  
5 Beds, 2 Baths, Games  
Room, 10 acres.  
\$790,000 to \$840,000  
Fay Hull: 0407 962 884



Lot 3 Burg Rd,  
GOULD CREEK  
4 Beds, 2 Baths, 18 acres,  
4 bay shed, 3 phase power.  
\$899,000  
Fay Hull: 0407 962 884

10 Heyworth Rd,  
GAWLER BELT  
5 Beds, 2 Baths, 4x20 Shed,  
2.5 acres.  
**\$615,000 NOW \$575,000**  
Fay Hull: 0407 962 884



Shop 3 Blacktop Road, SA, 5114 RLA: 201543

Phone: 8280 7775 Fax: 8280 7704 Email: [admin@onetreehillrealestate.com.au](mailto:admin@onetreehillrealestate.com.au)

**FREE APPRAISALS** by your local area expert!

**Just NISSmaz**

NEW, USED, RECO PARTS  
Cars, Commercial & 4WD's



**Ph: (08) 83591444**

[nissmaz@neonet.com.au](mailto:nissmaz@neonet.com.au)

**JUST WRECKING  
TOYOTA'S**

ABN: 83 092 676 358  
**STUART**



PHONE: **8359 4499** FAX: **8359 4500**  
Corner of South Rd & South Terrace, Wingfield, 5013

**SPRINT  
AUTO PARTS**

**PROUDLY  
SUPPORTING  
SA!**

EVERY Car, EVERY Part, EVERY Day.



**SPRINT has all your parts & accessory needs!**



**Fluids!**

**Hard Parts!**

**Car Care!**

**With 35 stores, we're always  
just around the corner.**

**PROUDLY SA OWNED & OPERATED SINCE 1984**

**35 STORES - OPEN 7 DAYS\***

**GET DISCOUNTS ON PARTS & ACCESSORIES!**

**BECOME A SPRINT AUTO PARTS VIP CLUB MEMBER**

For your nearest store, go to [www.sprintautoparts.com.au](http://www.sprintautoparts.com.au)



EVERY Car, EVERY Part, EVERY Day.  
For your nearest store, go to [www.sprintautoparts.com.au](http://www.sprintautoparts.com.au)





**PROPEST** 1800 24 22 21  
management services

**We service any pest  
No problem!**

PO Box 684 St Agnas

Residing Humbug Scrub

- \* Termite/White Ant Removal \* Termite Baiting Systems
- \* General Pest Control \* European Wasp & Bee Removal
- \* Existing and Pre Purchase Property Inspections
- \* Weed Eradication \* Free Site Assessment

www.propestcontrol.com.au

AS/NZS ISO 9001:2000  
QUALITY CERTIFIED COMPANY



**POST OFFICE HAS NOW RELOCATED**  
ONE TREE HILL



GIFT & POST  
FOR ALL YOUR BANKING,

BILL PAYING, POSTAL NEEDS, GIFTS AND LOTS MORE

PH: 8280 0090 FAX: 8280 0030

OPENING HOURS: MONDAY TO FRIDAY 8AM - 5PM

SATURDAY 9AM - 12PM

SHOP 1B LOT 2 BLACK TOP ROAD, ONE TREE HILL, 5114



**Olympic Boring Contractors Pty.Ltd**  
**PUMP SALES & SERVICE**



Specializing in Design & Installation of Submersible Pumps

Supply & Installation of Domestic Pumps

Sales & Pump Service

Over 35 Years of Experience

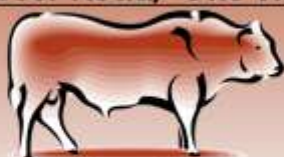
Call Michael Ferraro OTH Resident for 27 Years

**Ph: 0408 847 060**

**Or: 8380 9474**

**Kamcheyenne Limousin**

Shillabeer Road, One Tree Hill



**Sides of Beef**  
**\$7.50 Per Kilo**

An average side weighs approximately 100kg.

The Limousin breed is renowned for its lean,  
low fat and highly muscled carcass traits.

We guarantee low fat, young and tender meat  
delivered to your door in a refrigerated vehicle.

Our meat is hung for 9 days and our cut list  
allows you to choose how you want  
your meat butchered.

At Kamcheyenne we use no hormone growth  
promotants or antibiotics and our cattle are raised  
and handled in a natural stress free environment.

For more information on sides of beef or  
live cattle sales please phone:

**Sarah on 0402 099 106 or**  
**John on 0427 131 018**

**ONE TREE HILL**

**GENERAL STORE**

Now with a sit  
down area to enjoy  
your freshly brewed  
coffee and  
irresistible cake

Check out the ever  
changing hot food  
items as well as a  
selection of gourmet  
cakes and slices

**N  
E  
W**

The General Store's New Opening Hours are

Monday's to Friday from 7.00am till 6.00pm

Saturday and Sunday 8.00am till 5.00pm

Public Holidays 8.00am till 4.00pm

Closed Good Friday, Christmas Day & New Years Day

We have a large range of groceries, magazines,  
confectionery and kids toys.

ATM now  
in store

**PH: 8280 7020**

Agents for





## Horse Care — The Girthy Horse

This is the horse that threatens to, or actually does, bite when his girth is being tightened. Some also kick forward with their hind legs, and you may get kicked in the head as you reach under his belly for the girth.

It is caused by pain or the fear of pain. Poorly fitted saddles, girth too tight or pulled up too quickly, or injury to the withers and/or back can be causes.

To treat: first remove the pain. Check the saddle fits him properly (get help if you do not know), use an elastic girth and pull slowly, or get a chiro or physio to fix an injury. Buying a new saddle is still cheaper than being put in hospital because your horse is in pain. Saddles change shape with work. Horses change shape with food, more or less. So a saddle that used to fit may not do so 6 months later.

Once the cause has been removed, you will need to re-educate him.

Saddle gently, placing the saddle carefully on his back. Check the saddlecloth is pulled up into the gullet and not pulling down on his wither. Girth to the loosest hole and give him a rest.



If you have any horse query for Julie please email the Grapevine. Email: [oth.grapevine@bigpond.com](mailto:oth.grapevine@bigpond.com)

Pull up another hole. Continue to tighten, giving him time between each pull to get used to it. Rub the area with your hand to reassure him. Take him for a short walk (5 or 6 steps) to stretch and relax, before final tightening. Use a mounting block to reduce strain on his wither as you pull yourself into the saddle. Unsaddle gently: lift the pommel until it is clear of his wither, then slide off while taking most of the weight. Pulling sideways can put the wither out of alignment..

To deter him from biting, hold a short whip along your left forearm, with the flapper beyond your elbow. If he goes to bite, allow the flapper to hit his nose. Do not attempt to strike him: you will be too slow. Allow him to strike himself. If he is also a kicker, you will need to be ready to transfer the whip to the right hand and slap his leg as he kicks. Timing is everything. Too slow will just make a game of it.

Above all, reward with kind words and rubs when he resists the urge to bite, even if he still pulls faces.



## Winter Pruning

All plants are better with some pruning. Native plants can be pruned anytime, except when frost or extreme heat is likely to follow.

The best time to start pruning is while the shrub or tree is small. Shaping as it grows makes the new growth healthy and promotes extra flowering and extends the life of the plant.

Old overgrown shrubs can be pruned back hard, they may not look too good for a while but new foliage will quickly cover the bare branches.

This works well with Grevillea, Bottlebrush, Lilly-Pilly, Native Hibiscus and many others. Woolybush is an exception, it is slow to recover from pruning heavily.

Plants can be pruned while in flower, but you may as well enjoy the flowers first and trim later.

Geralton Wax needs to be pruned, so pick the flowers for indoor display. A trim and tidy of any shrub, usually only once a year, will give you a dense and healthy plant with plenty of flowers. Happy pruning.

Article kindly submitted by Anne Dealtry.



## SES HOME SAFETY TIPS

With the onset of winter and the unpredictable weather we tend to have, it certainly helps to be prepared for what Mother Nature sends our way.

Be Storm Prepared:

- \* Keep your roof, gutters and down pipes free from leaves and debris
- \* Ensure your roofing is maintained and roof tiles secure
- \* Secure loose items in your yard
- \* Check that your home insurance is current and adequate
- \* Prepare an Emergency Kit, include emergency phone numbers, a battery operated radio, torch and spare batteries
- \* Check weather forecasts before planned activities
- \* Keep a list of emergency telephone numbers convenient
- \* Park vehicles and boats under shelter
- \* Ensure pets are safe
- \* If your home suffers storm damage, call the SES for help if you need it. They have the training and equipment available.



Thank you to the Neighbour Hood Watch Newsletter for this information



## OUR VISION

*"People of faith sharing God's love as we worship and serve in the community"*

### Sundays 10.00am

- \* Sunday Morning Service
  - \* Sunday School - visiting children are welcome to participate
  - \* SMYG (Sunday Morning Youth Group) - led by their Leader in their own room.
- If you would like to attend our Service any time, you will be made very welcome.

Sunday, 12th August is our 145th Anniversary of the One Tree Hill Uniting Church. We will be celebrating with a very special Service and would love you to join us. Further details will be announced.

Enquiries - Maureen Hill 8280 7368

### Fellowship - All Welcome

Meetings held on the 4th Wednesday of each month at 10am, beginning with Morning Tea and followed with a Talk by a Guest Speaker.

### Programme

June 27th: OTH AGM Uniting Care Wesley, Smithfield, Speaker, Julie Taylor.

July 25th: FRBC Radio, Speaker Bruce Townsend, Shared Lunch.

August 22nd: Simon Byrant, renowned TV Chef cooking demonstration. Don't miss this opportunity, right on your doorstep to come and see Simon.

September 26th: Reverend Nita West will talk on her recent Papua New Guinea trip.

October 24th: Outing to Aviation Museum.

November 26th: Christmas break up and devotions.

## WOMBAT'S

- \* Bobcat & Tipper Service
- \* Excavator 4.5 tons
- \* Pig trailer & tipper (24tons)
- \* Concrete/Pavers prep & removal
- \* Post hole boring (350m-450m)
- \* Trench hole digging to (1200mm)
- \* Shed site prep
- \* Rainwater tanks prep
- \* Driveways
- \* Stock burial
- \* Civil work
- \* Retaining wall prep
- \* Roller 1.6 tons static



Keep it Local Phone:  
John Mancone  
0417 456 656

## "ADELAIDE NORTHERN VETERINARY GROUP"

Drs. ALAN & ROBERT IRVING, B's.V.Sc  
Modbury—Salisbury—Elizabeth East—Elizabeth Park  
Ph: 8280 7353 or M:0419 806 213



[www.adelaidenorthernvet.com.au](http://www.adelaidenorthernvet.com.au)  
Email: [alanirving@internode.on.net](mailto:alanirving@internode.on.net)

## Rob Green Security

Servicing, Installation, Monitoring  
Your Local Technician

Ph: 0419 398 346



### Wet Weather Driving:

Slow down! Avoid driving through puddles of water at speed. Water splashing up into the engine can cause the vehicle to stall or cause you to lose control of your steering.

Keep a safe distance from the vehicle in front of you. Vehicles driving on wet bitumen need two-to-three times more stopping distance.

If possible avoid lanes where water collects near the kerb during heavy rainfall.

Avoid distractions such as eating, drinking, tuning radios or using hands free mobile phones.

If stopping on the side of the road improve your visibility by using your hazard lights.

Make sure that all lights are operating correctly.

Turn your headlights on so your vehicle is more visible to other drivers and also ensure wiper blades are in good order.





# SALE

from Pat the  
Drum Man



**New & Used**

**IBCs**  
From **\$30 EA**  
**NEW IBCs**  
Food Approved  
**\$330**



**Pallet Tanks**

**Open**  
**Mon -Thurs**  
**6am - 3pm**  
**Friday**  
**6am - 2pm**

**Valves**  
**Adaptors**  
**Bungs**  
**Caps**  
**Spouts**

**Tanks**  
**& Drums**  
**suitable**  
**for Wine**  
**Storage**



**NEW!**  
**20L & 60L**  
**Tins available**



**Half cut drums**  
**perfect for**  
**camping**  
**\$16.50** each

**Drums suitable**  
**for Petrol**  
**or Diesel**  
**Keep the**  
**mice away**



**Tanks & Drums suitable**  
**for almost any product**  
**or chemical you like!**  
**Spare Parts &**  
**Fittings available!**

**Container Reconditioning**  
**Services Pty Ltd**  
**Ph: 8359 7011**  
**180a Cavan Rd, Dry Creek**

## The Northern Foot Clinic

Heel Pain, Sports Medicine, Aching Feet, Children's Feet  
Ingrown Toenails, Plantar Warts, Orthotic therapy, Mobilisation

*Pain relief today and prevention for your future*

- \* 109 Haydown Rd, Elizabeth Vale (onsite parking)
- \* 16 Adelaide Road, Gawler (onsite parking)
- DVA, Hicaps. Medicare (GP approved only)

**8287 3888**

**NCPS**  
**INDUSTRIAL**

**Pumps, Generators, Hose & Fittings**  
**Servicing the One Tree Hill Area**



Present this  
advertisement for  
15% off  
recommended  
retail price on  
DAVEY household  
pressure, sump &  
pool pumps also  
MEDO septic air  
blowers



**U2, 1445 Main North Rd,**  
**Para Hills West S.A. 5096**  
**Ph: 8285 2344**

**Email: sales@ncpsindustrial.com.au**  
**Web: www.ncpsindustrial.com.au**  
**(Opposite Bunnings Parafield)**



**No Job**  
**Too Big or**  
**Too Small**

**Professional Tree & Stump Service**  
**Call Brad for FREE QUOTES**

**on: 8365 8000**

**Don't Forget to ask for our**  
**Special Grapevine Price....**



# Kids Page

Welcome to the June issue of the Kids Page. I must say that I am a little disappointed that we haven't had a response to "We wish you a Happy Birthday". Perhaps your birthday is next month or the one after, if it is don't forget to drop me a line and a photo if you would like it published. Hopefully you won't be shy about it and I will get a good response. This month I have themed the page around the Olympics, I guess that you all know it will be starting in July in London. The assortment of puzzles should get you in the mood for watching the Olympics on TV. Have fun doing them. Until next month Auntie Bev.

Email: [oth.grapevine@bigpond.com](mailto:oth.grapevine@bigpond.com) or drop me a line OTH Grapevine P.O. Box 196 OTH Post Office.



## THE OLYMPICS WORD SEARCH PUZZLE

A	T	H	L	E	T	E	S	S	I	D	O	N	A
N	C	C	I	N	D	I	V	I	D	U	A	L	S
E	P	O	D	I	U	M	L	N	S	T	T	Y	O
L	Y	M	R	M	P	V	I	E	H	G	C	M	G
Q	A	P	M	E	E	S	F	L	Z	S	N	P	P
U	R	E	T	R	N	T	E	L	I	N	C	I	P
A	A	T	T	O	E	T	S	D	A	I	O	C	R
D	T	I	I	H	E	M	E	O	N	G	U	R	D
R	G	T	Y	S	E	M	N	A	H	S	S	E	B
E	A	I	I	H	U	M	C	O	E	M	M	C	E
N	F	O	T	R	O	M	T	H	A	E	H	O	E
N	R	N	S	D	R	O	C	E	R	D	L	R	O
I	A	E	E	K	R	A	T	O	O	A	T	D	G
A	M	N	O	S	O	M	E	A	N	L	I	S	N
L	S	P	E	C	T	A	T	O	R	S	N	U	D

## OLYMPIC WORD LIST

ANTHEMS	NATIONS
ATHLETES	PRIDE
BRONZE	COMPETITION
PODIUM	COACHES
FLAGS	RINGS
GOLD	SILVER
HOST	MEDALS
TEAMS	QUADRENNIAL
SPECTATORS	WORLD RECORDS
INDIVIDUALS	OLYMPIC RECORDS

Find the words about the Olympics that are listed above in the word search grid. Circle each letter one by one. Letters may be used in more than one of the words. When the puzzle is complete, read the remaining letters left to right, top to bottom, to learn interesting Olympic facts.

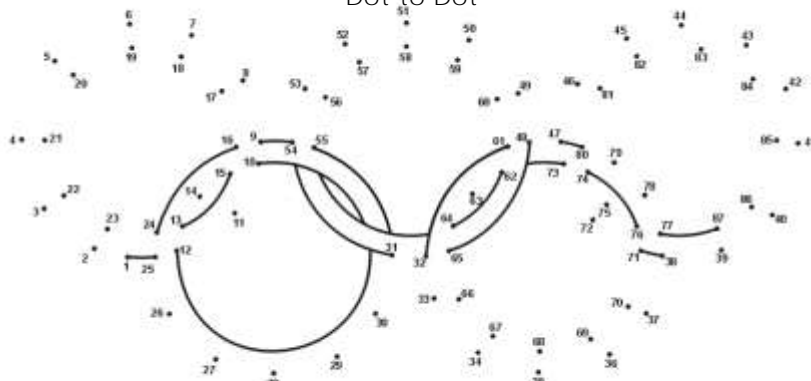
## Tongue Twisters

Betty Botter bought some butter, but she said,  
**"This butter's bitter! But a bit of better butter will make my batter better."** So she bought some better butter, better than the bitter butter, and it made her batter better so 'twas better Betty Botter bought a bit of better butter!

She sells sea shells by the seashore. The shells she sells are surely seashells. So if she sells  
**shells on the seashore, I'm sure she sells seashore shells.**

How much wood would a woodchuck chuck if a woodchuck could chuck wood?  
*(say this one really fast)*

## Dot to Dot



\*\*\*\*\*

## BRAIN TEASERS

Q: If a plane crashed on the border of South Australia and New South Wales, where would they bury the survivors?

**A: You don't bury survivors!**

Q: Twelve pears hanging high, twelve men passing by, Each took a pear and left eleven hanging there. How can this be?

**A: Each is a man's name!**

Q: If there's a frog, dead in the centre of a lily pad which is right in the middle of the pond, which side would it jump to?

A: Neither, the frog is dead!

**Q: You're a bus driver. At the first stop 4 people get on.**

At the second stop 8 people get on, at the third stop 2 people get off and, at the fourth stop everyone got off.

**The question is what colour are the bus driver's eyes?**

**A: The same as yours. You're the bus driver!**

Q: What never gets any wetter, no matter how much it rains?

A: The sea!

Q: A man went outside in the pouring rain with no protection, but not a hair on his head got wet....how come?

A: He was bald!

**Q: David's father has three sons; Snap, Crackle and .....?**

A: David!

**Q: What has a mouth, but doesn't eat? A bank with no money?**

**A bed but doesn't sleep** - waves but has no hands?

A: A river!

Q: What two words, when combined hold the most letters?

A: Post Office!

Q: What word when written in capital letters is the same backwards? A: NOON!

\*\*\*\*\*

Q: What is square and green? A: A lemon in disguise!

Q: How do you make an artichoke? A: Strangle it!

**Q: What's the fastest vegetable? A: A runner bean!**

Q: What do you call two rows of vegetables?

A: A dual cabbage way!

Q: Why did the banana go to the Doctor?

**A: Because he wasn't peeling well!**

**Q: Why aren't bananas ever lonely?**

A: They come in bunches





# SEPTIC TANKS PUMPED OUT

For good old fashioned service call

## 8283 3656



## SEPTIC PUMPING SERVICES

Email: [septic1@bigpond.com](mailto:septic1@bigpond.com)

Web: [www.septicpumpingservices.com.au](http://www.septicpumpingservices.com.au)

# E & A Vanin



## LOCAL PLUMBING SERVICES

### DOMESTIC-COMMERCIAL-INDUSTRIAL

- General Plumbing Maintenance
- New Homes & Extensions
- Drains & Stormwater
- Bathroom Renovations
- Hot Water Service Changeovers

## REGISTERED MASTER PLUMBER

EDDIE VANIN PROPRIETOR

M: 0412 394 689

Home/Office 8280 7970

## One Tree Hill Soccer Club Picnic Review

The One Tree Hill Soccer Club hosted on behalf of the One Tree Hill Progress Association the Family Picnic Day. Even though the weather was cool, approximately 250 attended and enjoyed the face painting, bouncy castle, live music and of course the races.

The CFS attended and showed off their fire fighting equipment, the Scouts displayed their camping skills and the Uniting Church provided cups of tea/coffee and lovely cakes.

The OTH Soccer Club provided the sausage sizzle and beverages.

There were plenty of races including the egg and spoon, three legged races, junior running races and of course the One Tree Hill Gift. There were fun games also like the Rolling Pin event. Next time everyone will be wearing safety hats as some of the ladies had some good but very wayward throws.

The One Tree Hill Soccer Club said that they "were proud and privileged to be a part of the day". "It was a fantastic money raiser for the club and proceeds from the day will go towards the constant up keep of equipment for the kids". (Soccer balls, nets for the goals and training aids).

The spokesperson Ray (President) said "OTHSC will gladly support future events like the Family Picnic Day as it was a good community event and everyone that attended had a great day".



## Soccer Results

### Seniors

#### Round 1

A's V Old Ignations Lost 4—3

B's V Old Ignations Won 3—1

#### Round 2

A's V Angkor Lost 4—2

B's V Angkor Lost 2—1

#### Round 3

A's V Mt Compass Won 7—3

B's V Mt Compass Won 5—3

#### Cup Round

A's Adelaide Titans Lost 9—2

B's Para Hills Lion Lost 4 —3

#### Round 4

A's East Adelaide Won 2—1

B's East Adelaide Won 5—0

### Junior Colts

Round 1 Lost 2—0, Round 2 Lost 10 —2

Round 3 Lost 6—3, Round 4 Lost 5—1

Round 5 Lost 2—0, Round 6 Won 6—2

#### Under 12's

Round 1 Lost 10 —0, Round 2 Lost 5—0

Round 3 Lost 12—0, Round 4 Lost 13—0

Round 4 Lost 15—0, Round 6 Lost 13—1

#### Under 10's

Round 1 Lost 6 —4, Round 2 Won 2—1

Round 3 Won 3—1, Round 4 Drew 0—0

Round 5 Won 2—1, Round 6 Lost 5—0

Results can be seen on the OTHSC website

<http://www.othsc.websyte.com.au/>





# Birdwood Pump & Irrigation Services

Now Servicing the One Tree Hill area

We Specialize in  
Agricultural Bores, Pumps & Irrigation  
All Makes & Models Available

Call David  
0438 685 089



Agents for Grundfos Sales

## COMPLETE **HIRE** Equipment & Trailer

KANGA LOADERS - BOBCATS - EXCAVATORS

TRAILERS ALL TYPES INCLUDING TIPPERS



HORSE FLOATS

TRUCKS & TRADIE GEAR

EARTH MOVING REQUIREMENTS  
\* CARTING \* SPREADING \* RUBBISH REMOVAL

WE CAN  
DELIVER!

Phone: Jason  
on 0418 823 287

Lot 10 Paxton Street, Willaston  
ABN: 51 008 178 979

## Looking for Roller Shutters?

For a FREE Measure & Quote  
Call Your Local Supplier



ESJ INSTALLATIONS PTY LTD.

One Tree Hill

Contact Earl on 0409 426 255

or A/H: 8280 7741

A1 Quality Workmanship & Materials  
Repairs and Conversions on Existing Shutters

**WE WILL NOT BE BEATEN  
ON PRICE!!**

## Need a Skip?

Rubbish Bins and Mini Skips

from 2m3 to 60m3

Call your local Skip/Bin Provider today!



Daniel 0414 280 891

Ken 0488 360 360

**D3**



**DISTRIBUTION 360 Pty Ltd**

Waste to Resources



## Crime Report – ONE TREE HILL Rural Watch – Offences reported between 16th April and 18th May 2012.

Overnight of 16th April

Theft

Black Top Road, ONE TREE HILL

Scooter Stolen from rear of house.

24th April

Arson

Humbug Scrub Road, HUMBUG SCRUB

Fire located at Mt Crawford Forest/South Para Reservoir, Multiple CFS units attended to extinguish fire.

26th April between 8am - 4pm

Residential Serious Criminal Trespass

Taylor Road, HUMBUG SCRUB

Entry via unlocked door. Jewellery and cash stolen.

26th April between 8am - 10.30pm

Residential Serious Criminal Trespass

McGilp Road, ONE TREE HILL

Entry attempted by opening unlocked front window. Nil stolen.

2nd May 3.30am

Police Pursuit with stolen vehicle. Female adult driver arrested - media release below.

MEDIA RELEASE Wednesday 2nd May 2012—Stolen car in One Tree Hill - woman arrested.

Police have arrested a woman after the stolen car she was driving was stopped in One Tree Hill. Police, who were in an unmarked car, observed the Nissan Skyline travelling along Black Top Road just before 3.30am with five occupants, including the driver.

Police continued to follow the vehicle until other patrols converged on the scene and as police were about to deploy road spikes, the vehicle pulled over to the side of the road.

The driver, a 46 year old woman from Elizabeth Grove was arrested and has been charged with illegal use of a motor vehicle. She is expected to be bailed and will appear in court at a later date.

The remaining occupants are currently assisting police and further charges are expected.

As always if you have any information to assist with any crime issues in the area please call Police Communications on 131 444.



## FARM MACHINERY

Local Sales for Small/Medium Farms

\* Slashers (5' and 6')

\* Backhoes

\* Wood Chippers - (3PL)

\* Fertilizer Spreaders

\* Tow Along Mowers (For ATV/4WD)



Stock at Hand  
& Orders Taken

Direct Importers, So Great Prices Ph: 0406 382 342

[www.safarmequipment.com](http://www.safarmequipment.com)

Uleybury

## Steven O'Connor

Naturopath, using Herbal and Nutritional  
Remedial Massage Therapist

Dip App Sc(Ag), Adv Dip W Herb Med, Adv  
Dip Nut Med, Adv Dip Nat, Dip R Massage  
For chronic pain and alternative medicine  
using herbs and nutritional medicine

Health Rebates Apply

Kilberin Cornishmans Hill Road

One Tree Hill S.A 5114

82807003 0407820422



## Nick Champion MP Federal Member for Wakefield

### Budget 2012—One Tree Hill to Share in the Benefits of the Boom

The 2012-13 Budget will deliver much-needed cost of living relief to many of the One Tree Hill households.

"This Budget is all about making sure all Australians share in the benefits of the mining boom and our strong economy, not just the fortunate few. I know many people in our community feel like this is somebody else's mining boom". "That's why the Budget will spread the benefits of the mining boom to help everyday Australians with cost of living pressures" said Nick.

\* **Delivering a new cash payment to families** with kids in schools. Parents will receive \$410 for each child in primary school and \$820 for each child in high school as part of the new Schoolkids Bonus.

\* **Increasing family payments by up to \$600 for local families.** Flowing from July next year, this extra support will be made to families currently receiving Family Tax Benefit Part A payments.

\* **Providing extra money to help pay the bills** to local young people, single parents and the unemployed currently receiving allowances. Singles will receive a \$210 lump sum payment while couples will receive \$350.

"We're also returning the budget to surplus, on time, as promised. Returning to surplus gives the Reserve Bank maximum flexibility to cut interest rates further, just like they did recently." Nick Champion said Interest rates were now lower than at any time under the previous Government, and a family on a \$300,000 mortgage is now paying around \$3,000 less per year." The Gillard Government is also finding room to deliver reforms which make for a stronger community and a fairer society. Big reforms like the National Disability Insurance Scheme, a big new investment in dental health and Aged care reform" said Nick



# CHAINSAW BASICS - Part One

It's that time of the year when activities involving the use of chainsaws starts to hype up a bit so I thought that it might be a pertinent time to look at some of the basic things that should be considered to do your tasks both safely and successfully.

Lets look at the protective wear side of things first. I know that most of the following is common sense but it's when we take shortcuts for the small jobs that we often get caught out in life so -:

- \* Definitely wear safety goggles
- \* Do wear leather gloves
- \* Do wear hearing protection
- \* Do wear safety-capped boots with non-slip soles
- \* Do wear a safety hat
- \* Do NOT wear any loose fitting garments but do seriously consider the wearing of a pair of timber chaps to protect your legs from contact with the saw's chain.

Now do your checks over the equipment -:

- \* Make sure that the bar and chain are in good condition. The chain should be sharp, as a dull chain can prove far more dangerous than a good sharp one
- \* Check the levels of both fuel and bar oil. If the saw needs the fuel to be topped up then do so safely without spilling the fuel over the chainsaw
- \* Check the tension of the chain against that suggested in your Operators Manual. A general rule is that when pulling the chain firmly at half way along the top of the bar, the guide teeth at that location should just be within the groove and when released you should still be able to spin the chain freely
- \* Use the pre-start and start guidelines as laid out in the Operators Manual that goes with your particular chainsaw. All chainsaws are not the same as many use different choke settings and priming sequences to start when cold
- \* Make sure that the chain brake works properly
- \* Once warm, the saw should idle smoothly without the chain moving around the bar. You should be able to get a quick response from the throttle and it should rev cleanly. If it doesn't, then service it or have it serviced because it is not ready to safely perform for you
- \* Shut the motor off and recheck the tension of the chain. If adjustment is required, do so as shown in the Operators Manual. I usually take the weight off the chain bar by lifting it at the far end of the bar whilst making the adjustments and locking the bar's clamping nuts as this reduces the risk of the tensioning changing from where you wanted it set.
- \* Place the safety cover back over the chain bar when the chainsaw is not in use or when carrying it out to your work area.

## Rose Pruning

Rose pruning can be daunting. It seems dangerous, difficult and possibly terminal for the plant. If rose pruning worries you, the bad news is, at some point you reach that date on the garden calendar (July/August). The good news is, don't panic because here is your pain-free guide to rose pruning.

It helps to know why you are pruning in the first place. Roses are pruned to encourage new growth, which in turn encourages lots more flowers. Keep that in mind and the entire task of pruning will seem much more rewarding.

The most common pruning error is to not prune hard enough. The winter pruning time is when all the mess and clutter is removed, leaving a basic framework for the rose to renew itself in spring.

Where frosts occur, delay pruning so new growth will not begin until after the frosts have finished or your rose will be damaged.

When you begin remember how far you cut back depends on the size and vigour of the rose and where it is growing.

Ok, so when you are dressed for the part and the saw is ready to go, the next thing to do is go over your preparation for the task of felling the tree-:

- \* If you have a choice of chainsaws, then select the correct size chainsaw for the size of the task ahead
- \* Remove any hazards from near your work area and check the tree for any wire that might be wrapped around it
- \* Look up for dead limbs that might be precariously sitting atop
- \* Look at the shape and balance of the tree and the angle (if any) that it is leaning on to determine where you will be planning to drop the tree as well as where you plan to safely retreat as the tree starts to fall. Make sure that your path to this safe place is clear of any obstructions
- \* If the tree is located on sloping ground, then you will need to position yourself on the uphill side of the tree when making your cuts into the trunk
- \* Look at the height of the tree so that you can establish how far it will fall. *You don't want to take out the outside dunny!*
- \* Other things to consider when dropping the tree are other hazards that can have an effect as it begins to drop. These hazards could be the wind and its direction., other trees standing nearby, the slope of the ground and anything that might influence the way that it bounces or rolls when it hits the ground
- \* Even with the best planning things can still go wrong so you should have an observer with you but at a very safe distance from the target tree. It is even better if the observer has a mobile phone and first-aid kit with them.

*This is a good time to say that if after considering all the above for your target tree you have lost some of your prior confidence, you really should consider hiring a professional to come in and do the job for you so that you can watch and learn from the experience.*

Next month we will look at -:

- \* How to strategically make your cuts to aim the target trees felling path
- \* How to cut up the dropped tree
- \* How to prune safely
- \* How to tidy up the chainsaw after a days work.



- \* **Step 1:** Go over the rose, cutting everything back by a third. Remove any lingering flowers and leaves and suckers (growth from the root system).
- \* **Step 2:** Next, remove any spindly growth, dead branches and very old brown/grey wood using secateurs and a pruning saw.
- \* **Step 3:** Select 3 or 5 green healthy, vigorous branches as the framework for the next season's growth. Remove any unwanted stems and then cut back the framework branches to an outward facing bud. An outward facing bud is selected to encourage growth away from the centre of the plant.
- \* **Step 4:** Remove all the pruning debris, including falling leaves and flowers from earlier in the year. Spray the pruned rose and ground with lime Sulphur to control pests and diseases such as black spot. The spraying is done immediately after pruning as if left it will burn new shoots.
- \* **Step 5:** Renew the mulch around your rose with a 5cm layer of organic matter such as lucerne, sugar cane, compost or manure. Water well when new growth begins.





**Thank You To**

**Officeworks**



Office Works once again donated all of **the children's prizes the Easter Colouring Competition.**

Our thanks to the team at Office Works Elizabeth for putting together the bags of treasures for the kids.

You can see by the look on these **children's faces how delighted they were** with the goodies.

Next Colouring Competition will be Christmas, we hope you are all looking forward to it.



**Wedding  
Engagement  
Naming Day**



**Special Birthdays  
including Children's  
Reunions  
Meetings or Other**



Now on the web: [onetreehillhall.com.au](http://onetreehillhall.com.au)

**One Tree Hill Institute  
Hall for Hire**

**Call 0459 105 045 or 8280 0000  
Email: [oth.hall@bigpond.com](mailto:oth.hall@bigpond.com)**



**Olympic Boring Contractors Pty.Ltd  
DRILLING WATER WELLS**



**Irrigation, Stock and Domestic Bores  
Specialized Machinery to Drill up to  
250m with Mud, Air & Auger**

**Call Michael Ferraro - Resident of OTH for 27 Years**

**Ph: 0408 847 060  
Or: 8380 9474**



**John Deere D110 Ride on Lawn Mower x 3  
Zero hours brand new, 42 inch cut, 19.5 hp. \$2,700**



**John Deere D130 Ride on Lawn Mower x 1  
Zero hours brand new, 42 inch cut, 22 hp. \$3,200**

**Phone: Darryl on 0407 497 999**





# TELESIGNAL ANTENNA SYSTEMS Pty Ltd

Government Endorsed TV

Antenna Installer

- Digital TV Antenna Installations
- Extra TV Points
- Digital Box Set Up & Tuning
- Tune & Set up TV, Video, DVD's & Blu-ray
- Pay TV Cabling
- Watch Foxtel in any room with a Pay TV System

Call for a FREE Quote Today, Local Resident

Ph: Ian George 0417 809 403

Email: telesignal@bigpond.net.au

Website: www.telesignal.com.au

## Air Conditioning & Complete Electrical Split Systems

Servicing the One Tree Hill Area

Deal Direct With Local Tradespeople  
Phone for a FREE Quote Today

**Air Conditioning & Electrical Installations**  
**'We can Supply & Install Wall Split Systems**  
**Or Ducted Split System Air Conditioners'**  
**All Brands Available**

Call Now & Have Your Unit Installed Before Summer  
Phone: Peter, Ryan or Leon Moyle

**0407 463 310 A.H. 8280 7442**

Email: completesplits@gmail.com

PG139465 L051080

## Country Estates

RLA 100925

SAMPSON FLAT/ONE TREE HILL \$690,000



27 acres

HUMBUG SCRUB/ONE TREE HILL \$570,000

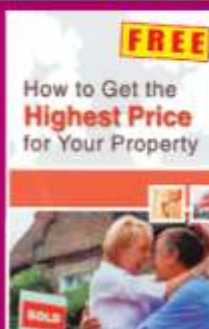


4.87 acres

## Hills & Country Specialists

Shop 1&2 Birdwood Plaza,  
20 Shannon St, Birdwood SA 5234

**PH 8568 5105**



A book that could make  
you THOUSANDS of  
dollars.

**Yours FREE**

This book shows how to present your property for sale  
and gives you tips on how to select, and work with, a  
real estate agent.

Whether you are an experienced property  
seller or a novice, this book could make you  
THOUSANDS of dollars.

It's yours FREE - no charge or obligation.  
Contact us now and we will send you a copy.

ONE TREE HILL 34, 34, 39 & 59 acres from \$400,000



ONE TREE HILL 2599m<sup>2</sup> \$529,000



Providing the Highest Standard of Ethics & Service ~ www.countryestates.com.au



## COMMUNITY DIRECTORY

Hall Hire Ph: 8280 0000 or 0459 105 045

Council Member	Joe Federico	0417 016 164
C/Member & JP	Andrew Craig	0417 016 160
Cricket Club	Brian Walter	0418 815 047
Friends of Para Wirra	Patsy Johnson	8280 7279
Home Assist	Playford Council	8256 0355
Market Contact	June B.	8287 3306
Nth Hills Pony Club	Kylie Scheffers	0422 882 184
OTH Grapevine	Editorial Team	8280 7095
OTH Progress Ass	Secretary	8280 7095
OTH Playgroup	Monday	0448 354 990
OTH Playgroup	Wednesday	8284 4555
OTH Primary School	Front Desk	8280 7027
Playford Band	Ivor McLatchie	8280 7214
Scout Group	Trevor	8255 3115
Senior Citizens	Martin Lindsell	8254 9248
Soccer Club Registrar	Sonia	0413 452 993
Tennis Club	Gary	8280 7067 or 0415 399 658
Walking Club (Walkie Talkies)	Helen	8280 7035
Wine Grape Growers (OTH Region)		
Fay	Ph: 8284 0201 or Natalie	8280 7335

## Real Potato & Leek Soup

Serves 8 - Cooking Time 45 minutes

### Ingredients

18 small red new potatoes (approx. 500g)  
6 cups (1.5 litres) chicken stock  
3 leeks, chopped  
3 tablespoons butter  
2 cups (500ml) milk  
salt and pepper to taste  
Parsley for decoration (and taste)  
(This soup can be made even better with the addition of chopped up bacon)

Place potatoes into a large saucepan with water to cover. Bring to the boil and cook until tender. Meanwhile, gently fry leeks in butter until translucent.

When potatoes are done, skin them while they are hot and cut them into bite-sized pieces. Place potatoes into stock pot with chicken stock and leeks and season to taste with salt and pepper. Cook over medium heat until simmering, then remove from heat and stir in milk. Garnish with parsley.



*If you have a family favourite you would like to share with Grapevine readers please email or post it in to us.*

## One Tree Hill Junior Baker Competition

Conditions of entry: The item of cookery to be submitted along with size and quantity will be published in the Grapevine in the month prior to the One Tree Hill market day. One entry per person.

This will allow for seasonal baking such as Christmas and Easter.

Entries are to be delivered to the One Tree Hill Junior Baker's table at the market between 9am and 9.30am. You will be required to make 3 identical items for the theme of the month. Paper plates will be supplied and entry cards including entry number will be attached. Judging will commence at 9.30am.

There are 2 age categories: 1) Ages 5 to 8 years 2) Ages 9 to 13 years.

Prizes for each category are 1st: Blue Ribbon and \$15.00 2nd: Red Ribbon and \$10.00 3rd: Green Ribbon and \$5.00. Entries can be collected along with prizes by 1pm.

How to enter: You will need to email (oth.grapevine@bigpond.com) or complete the entry form and mail to One Tree Hill Progress Association, PO Box 196 One Tree Hill SA 5114. Or drop it into the General Store. You must include your name, age and phone number.

Registration must be completed before Thursday 4th July for the July Competition.

The May results are on page 3.

# Theme for July is Slices



Name	Age	Phone



# ONE TREE HILL FODDER & RURAL SUPPLIES

Shop 4/9 Black Top Road,

One Tree Hill

**Ph: 8280 7680**

Email: [sales@onetreehillfodder.com](mailto:sales@onetreehillfodder.com)

Hours of Trade:

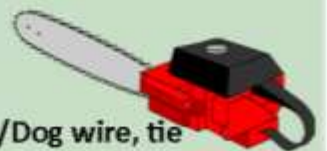
Monday to Friday 7.30am to 6.00pm

Saturday & Sunday 9.00am to 4.00pm

Come in and  
say hello to  
Charlie!



- Want to move some gear around? New OTH Fodder TRAILER HIRE 6 x 4, 6 x 4 with cage, 8 x 5 with cage, car trailer and soon to come horse float. 24 hour hire only - or multiples
- Hay is getting short in supply. We have Lucerne, Oaten and Wheaten. We also have back in stock Oaten/Vetch compressed bales. Sorry no rounds available.
- Ploughing the paddock? We have Superphosphate, organic fertilisers and all the seed you could want. Most is either one or two days away but we have some super and fertiliser in stock. We can organise bulkier bags of almost anything.
- On a similar note Neutrog Rapid Raiser and Bounce Back general fertilisers, Blade Runner for lawns all in 25 to 40kg commercial bags, Amgrow Potting mixes, Regular and Premium, Blood and Bone, Cactus feed etc.
- Ever thought of building your own garden shed? We now have 3.6 metre by 100/125mm Green/CCA posts in stock (for uprights) rare.
- The chooks are still hungry? We are now selling not only Golden Yolk but also Xtra Egg, 2 for \$26 (20kg bags).
- Don't go cold this winter, top up your 8.5 kg gas cylinder for \$20. Every day, any brand of cylinder as long as it is within date (10 years from last date stamping).
- Kleenheat are supporting us for some months with 45kg cylinders at \$99. FREE delivery as well so no excuse to not keep them full.
- Harry the horse is still munching away on our Green and Gold Horse Pellets at just \$19.95 for 30kg. This is a top quality product for a very low price.
- Got a hole in the wellies? Feet cold? Blundstone Wellington Boots or series 500 boots for general work in stock - most sizes.
- Like to buy products in 20 litre drums for the shed? Farmoil, Hydraulic Oil, 20w50, Turbo Diesel Kerosene, Turpentine in stock plus smaller bottles of some
- Charcoal in 20kg bags (Gaganis), Firelighters, Matches.
- Wide range of star droppers, CCA posts, Creosote Posts, Sheer and Lamb/Cattle/Dog wire, tie wires, clips, fence pliers, wire twists.



Please note our hours of operation have not changed from July 1st 2010.



## AIR CONDITIONING

### SEYMOUR HEATING & COOLING

Installations of Ducted Reverse  
Cycle, Ducted Evaporative,  
Ducted Gas, Combustion Heaters  
and Servicing



**20 Years Experience**

**For a FREE Quote call**

**Wayne on 0411 410 889**

## AUTO

### FRANK'S BLACKTOP AUTO General

Engineering  
Repairs to  
4-Wheel Drives  
& All Mechanical  
Repairs  
Black Top Road  
One Tree Hill  
Ph: 8280 7255 or  
0410 490 246

## BEAUTY

### BEST DRESSED MOBILE TAN \$30.00

Vani T  
Naked Tan  
St Tropez  
Call Lea  
0411 416 011  
www.bestdressed.net.au

Conditions May Apply

## ENJO



For product  
enquiries,  
demonstrations  
and all your  
ENJO needs  
contact  
Beni Hite  
Ph: 8280 7815 or  
0403 763 826

## ELECTRICAL

### ROGER GIRDHAM ELECTRICAL

For all your  
Electrical  
Installations &  
Maintenance  
Jobs  
Call Roger on  
0417 853 863  
or 8280 7788

## FREE

### FREE DRAKES

Three beautiful  
pet Khaki  
Campbell  
Drakes to give  
away to a good  
home.  
Will separate  
Ph: Meredith  
8280 7137

## GARDENING

Geoff Jacobson for all  
your gardening needs

- \* Lawn Mowing
- \* Tree Lopping
- \* New Lawns
- \* Fertilising
- \* Weed Control
- \* Pruning
- \* Rubbish Removal
- \* Landscaping
- \* Shed Cleanouts

Ph: 131 546 or  
M: 0407 733 832

## MAINTENANCE

### WARNER'S HOME MAINTENANCE

- \* Gardening
- \* Odd Jobs
- \* Painting
- \* Pruning
- \* Gutter Cleaning
- \* Basic Home  
Maintenance

Call Pete:  
0433 619 108

## OLIVE OIL

### OLIVE OIL FOR SALE



\$7.50 per litre  
for 20 litres  
Complete with  
FREE Container  
and Tap  
Ring Debbie on  
0417 456 682

## PEST CONTROL

### BEST PEST CONTROL

- \* Spiders
- \* Earwigs
- \* Millipedes
- \* Bees
- \* Ants
- \* Flies
- \* Termites

Call Paul on  
0418 893 411

## PLANTS

### DEALTRY NATIVE PLANTS WHOLESALE

Trevilla Road, (Off  
Frank Barker Road  
OPEN 1st Two  
Weekends each  
Month 10am-4pm  
Plants from \$1.00  
Phone for directions  
Ph: 8280 7079 or  
0402 010 877  
Gift Vouchers Available

## ROAD GRADING

ROAD GRADING  
in One Tree Hill  
and the  
Surrounding  
areas

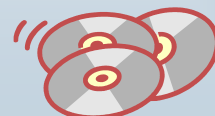
Call for a FREE  
quote for all  
Grading & Road  
Maintenance  
Contact Merv on  
0428 261 170

## HATHA - YOGA

### YOGA & HATHA CLASSES WEEKLY

Monday Evening  
7.00pm—8.30pm  
Tuesday Morning  
10.00am - 11.30am  
The Moonlight Choir  
Singing Workshop  
Wednesday  
7.00pm - 9.00pm  
All Welcome  
Bookings are Essential  
Call Kim on 8522 3776  
or 0412 192 076

The CD of the  
Anzac Day Dawn  
Service and  
Family Picnic  
Day will soon be  
available from  
the CFS, Soccer  
Club and  
Progress. Place  
your order now.



### Playford Council Contact Details

24 hour Emergency & Lost/found dogs

8256 0333

General Enquiries and Burning Permits (seasonal ) 8256 0333 Email: [playford@playford.sa.gov.au](mailto:playford@playford.sa.gov.au)

Libraries: Elizabeth 8256 0334

Munno Para 8254 4600

When telephoning council with a request please remember to get a Customer Registration Number (CRN) to ensure registration and easy identification of your communication.

You can also phone or email your local Councillors.

Joe Federico Ph: 0417 016 164

Email : [jfederico@internode.on.net](mailto:jfederico@internode.on.net)

Andrew Craig Ph: 0417 016 160

Email : [adcraig@ihug.com.au](mailto:adcraig@ihug.com.au)



## Community Notice Board

Do you have an upcoming Community event or a special announcement that you would like printed on this page? Keep notices as brief as possible please.

Email or call with your details. Email: oth.grapevine@bigpond.com Phone: 8280 7095

Please note deadline date on the front cover for each edition.



Bookings are running hot at the One Tree Hill Institute and due to the popularity of the hall there have been recent improvements to facilities. Last month a dish washer was installed, this will benefit the regular users as well as the caterers for Weddings and parties. Pat, the hall manager is pleased to announce that the skirts for the stage are ready (the black one was there for the Anzac Dawn Service you may have noticed) .

Not only do we have the black one but the white one is ready to go as well. The skirts can be hired for special occasions along with the red carpet runner that has just arrived. The skirts were kindly donated by Jeanette from Northside Curtains who are located at Parafield next to Bunnings. The red carpet runner was also generously donated by Peter of North East FlooringXtra. Pat and Progress are extremely grateful for the donations.

Progress has purchased tablecloths that can also be hired for functions When you make an enquiry about the hall for hire please ask about the extras that are now available.

Compliments are coming in thick and fast for the Institute so if you are thinking about hiring it for a special occasion please book it well in advance to avoid disappointment.

Call Pat for bookings on **8280 0000**

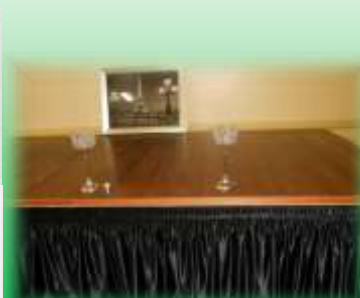


A Family Business for 35 Years  
Now located in a new showroom at  
Parafield, next to Bunnings

Ph: 8281 7377



North East FLOORINGXTRA  
430 North East Road, Winsor Gardens  
Phone: **8369 1780**



### Playgroup at the Institute

Vacancies are available for babies to school age children at the OTH Institute.

Monday Ph: 0448 354 990

Wednesday Ph: 8284 4555

9.30am until 11.30am both days



OTH Senior Citizens meet every Tuesday at the Institute from 1.00pm until 4.00pm. Come and enjoy the camaraderie along with indoor bowls, cards afternoon tea as well as trips and dinners at various times. Any age are welcome. Contact Martin on 8254 9248 or Gordon on 8255 2383 for more information or just turn up for a look.

### Next Country Market

Saturday 2nd June

(9am-1pm Approximately) at the

One Tree Hill Institute Black Top Road.

Great variety of hand made items plus lots of food items.

A reminder to all residents that the Playford Council's Mobile Library Service now comes to One Tree Hill on a Friday afternoon, once a fortnight. The van parks outside of the Institute opposite the shops from 3.00pm - 4.00pm. Visiting dates for June are the 1st, 15th and 29th.



PROGRESS General Meeting - Thursday 12th July at 7.30pm.

Please note that there is no June meeting.

Venue: One Tree Hill Institute, Black Top Road, One Tree Hill. New members are very welcome.

