

# One tree hill grapevine



This is a free community Newsletter.  
However a Gold Coin Donation to the Piggy Bank in General Store,  
Post Office or Fodder Store would be appreciated.

October- Volume 35 - Edition 9- 2012

Deadline for the November edition is Monday 29th October, 2012



## Win at the Royal Adelaide Show for Local Identities

One Tree Hill can be very proud of locals Sarah and John Popow from Kamcheyenne Limousin Stud for winning a 1st place at the Royal Adelaide Show. Pictured below is "Odds" the winning Senior Champion Limousin Bull. Odds was also able to boast the biggest eye muscle area scan of 143cm square (21cm bigger than the next scan score) of any bull of any breed at the 2012 event. A large eye muscle area ensures that you get more of the good cuts of meat from a side. Pictured below are John, Sarah and their show manager Cathy with "Odds", "Freya" and her bull calf "Howzat". Freya won 1st prize in her class. Howzat is the son of Odds and is only 6 weeks old and is already showing the muscle definition and wonderful temperament of his father. Bottom right photo is of "Geronimo" this was the studs first year for entering the led steer (Hoof and Hook) section of the beef cattle competition.

Geronimo was awarded Reserve Champion light weight domestic steer on hoof.

*You may have noticed the Kamcheyenne Limousin Stud ad in the Grapevine for their healthy, clean, lean and tender local yearling. If you haven't, check it out, it's on page 20 of this edition.*



### EMERGENCY NUMBERS

Police: 131 444

Ambulance & Other Emergencies:

Country Fire Service: 000

Station: (When manned) 8280 7412

Hospital: 8182 9000

000

General Business: 8280 7055

Bushfire Info Hotline (24hr): 1300 362 361



[www.cfs.org.au](http://www.cfs.org.au)



The sun is shining and the skies are blue, what more could we ask for?  
We all know that we have to take the good with the bad, summer months mean that we have the potential to have a bush fire. On page 3 is an invite to all to see what happens at the CFS. It should be a very interesting day and perhaps if you have ever thought about becoming a volunteer CFS worker then this may be your chance.

This month we have featured several achievements of locals, firstly there is the lad Casey who won so many prizes at the Gawler Show, Sarah and John who are featured on our cover, Tracey (Our Junior Chef organiser) who finally achieved a 1st place at the Royal Adelaide Show and also an article about Geoff Easom's harness racing stud. Congratulations to all, we hope to bring you more local achievements in the future. Just keep sending those stories in, it's a wonderful way to spread news.

We have a reminder on the back page about the Chilean Needle Grass, please try to make the effort to attend the day and learn how you can help control this awful weed.

Joe Federico, our local councilor has quite a bit to say about the rating system on page 4. We hope that you can make the time to read the report, as Joe has tried to rationalise/explain the rate rise for us.

Next month the compiler is due some annual leave so unfortunately the Grapevine will be a little later than usual. We will probably have it out in the 2nd week of November all being well. Hopefully this delay will not inconvenience too many of our readers and our compiler has a well deserved and enjoyable holiday.

Until next month, stay safe and well, The Grapevine team.

You can view the Grapevine online, just go to [www.onetreehillhall.com.au](http://www.onetreehillhall.com.au) and go to "About Us" and you will find the editions at the bottom of the page.

Phone: 8280 7095

Email: [oth.grapevine@bigpond.com](mailto:oth.grapevine@bigpond.com)

Post: P.O. Box 196 One Tree Hill, SA 5114

\*\*\*\*\*

## Presidents Report October 2012

The One Tree Hill Progress Association is seeking expressions of interest from local groups regarding the Tour Down Under that will be running through our township at approximately 11.30am on Friday January 25th 2013.

The One Tree Hill Uniting Church has agreed to operate a morning tea facility of coffee, tea, cakes etc.

Are any of the local groups interested in operating a sausage sizzle? Please note that it will still be school holidays.

Please contact our Secretary, June Owens for further details.

Bookings continue to grow with the local Institute, with very few vacant dates remaining for this year. The feedback from the hall has been really good and Pat, our hall manager says that it's wonderful to be able to

Progress is still investigating the value of installing solar panels to assist in offsetting increased electricity charges.

The committee and interested local residents are working well together and we are still requesting ideas regarding increased car parking facilities in and around the main street, ideas can be forwarded to the association.

Regards Ian Slater President



To contact OTH Progress

Email: [oth.progress@bigpond.com](mailto:oth.progress@bigpond.com)

or by post: P.O. Box 196 One Tree Hill, SA 5114

or by phoning the Secretary on 8280 7095

\*\*\*\*\*

### Some sayings, that are too good to be forgotten!

God put me on this earth to accomplish a certain number of things. Right now I'm so far behind, I will live forever!

I earn a seven-figure salary. Unfortunately there's a decimal point involved!

The only person who listens to both sides of an argument is the next door neighbour!

My mind not only wanders, sometimes it leaves me altogether!

\*\*\*\*\*

## Read the Grapevine on line

If you haven't had a chance to see the Grapevine on line please go to the site:

[www.onetreehillhall.com.au](http://www.onetreehillhall.com.au) and go to "About Us", scroll to the bottom of the page where you will be able to select the one line edition of the Grapevine.

This is a great way to share local news with friends and family who can't get a hard copy of the Grapevine. Happy reading.



\*\*\*\*\*

This newsletter is published by the One Tree Hill Progress Association. Email: [oth.progress@bigpond.com](mailto:oth.progress@bigpond.com) Ph: 8280 7095

The views expressed in this newsletter are not necessarily those of the One Tree Hill Progress Association.

Its purpose is to share local news, views and events. Advertisers are responsible for the accuracy of the content of their advertisement.



# **ONE TREE HILL CFS OPEN DAY**

## **3<sup>RD</sup> NOVEMBER 9AM TO 1PM**

- Learn how to better prepare and protect your property this fire season
- View our Station, Trucks and Equipment (children especially welcome)
- Find out more about the CFS and volunteering



A CFS Community Educator will be on-site to provide rural fire safety/preparation seminars commencing each hour  
(HIGHLY RECOMMENDED!)

Do you know that Rural Fires comprise only 19% of the total incidents that the OTH CFS responded to over the past year?





# ONE TREE HILL GRAPEVINE

## CFS REPORT OCTOBER 2012

### Incident Report



*The incident list this month is both many and varied. The Brigade attended 2 car fires, a tree down, three car accidents and a number of deliberately lit fires on the side of the road during the month. Fortunately the car accidents were of an insignificant nature with no reported injuries.*

**The Brigade will have an Open Day at the station on the 3rd November from 9.00am to 1.00pm.**

**All are welcome to attend.**

#### **Spring has arrived and Summer is on the way!**

**A:** Slash or mow long grass and remove cut material within 20 meters of the home.

**B:** Remove weeds around sheds and fences.

**C:** Cut back trees overhanging the roof.

**D:** Remove fallen branches and other debris.

**E:** Check and service all mechanical equipment, including grass cutters, water pumps, sprinkler systems and fire extinguishers.

**F:** Remove leaves from the gutters.

**G:** Review and update your Bushfire Action Plan.

**H:** Also spraying fence lines helps reduce damage to the wooden poles and galvanising when a fire comes through a property.



**Our next fire season's hazards  
have already begun to surface.**

*Are you bushfire ready? Prepare. Act. Survive. For more information visit [www.cfs.sa.gov.au](http://www.cfs.sa.gov.au)*



**For general information please contact OTH Duty Phone on 8280 7055**

**You can also visit the CFS website or phone 1300 362 361**

#### **Councillor's Report by Joe Federico**

I have had a lot of emails and discussions in relation to the recent rate advice notices in relation to the actual increase being above the advertised 6.3%. Council has responded to emails by explaining where the rates will be spent or giving information on valuation increases or decreases in a selection of suburbs but nothing to explain why 6.3% ends up being greater even though CV values have remained the same or in certain areas decreased. **Finally Council Rates rise explained "Well sort of"**, this is how I have rationalised the increase.

The rate increase was based on an averaging baseline of \$200,000 being the CV value of the average dwelling in Playford. Last year the Fixed rate component of the rates was \$708 to cover operational costs, this year the fixed rate was \$754 to cover operational cost due to increased staff numbers and new and enhanced services that have now become operational costs being funded perpetually (this means that every time Council employs more staff or introduces new services the Fixed Rate will increase to cover those costs and CPI and wage increases for that year) hence the \$46 increase this year.

Then there is the variable rate increase this is determined by looking at what the average \$200,000 home paid in rates last year and increasing that value by 6.3% which is then converted to a cent in the Dollar rate to be applied to all dwellings. Therefore the rate in the dollar this year (based on the \$200,000 average) was deemed to be 0.1826 thereby taking  $200,000 \times .1826 = \$365.20$  (variable rate) + \$754 = \$1119.20 + NRM levy. However if your CV value is say 510,000 then  $\times .1826 = \$931.26 + \$754 = \$1,685.26 + \text{NRM levy}$  (last year it would have been  $510,000 \times .1654 = \$843.54(V) + \$708 (F) = \$1551.54 + \text{NRM Levy}$ ).

The increase would then be \$133.72 which represents an annual increase of 8.6% not 6.3% as advertised. Complicated? Yes, equitable? Questionable. Based on the above example a 0% increase in rates would still see your rates increase by the fixed rate increase of \$46.

There you have it in a nut shell, perhaps we need to look at a higher base line to get a more equitable rate increase over the whole of the city, after all a rise in CV value does not equate to a

rise in wages or disposable income (or more services) especially when you take into account all the other rises we face e.g. water and electricity for starters.

Update on the **Rural Numbering** process. There are 706 installations required as of 13/8 DTEI advised the City of Playford that there was an anomaly with the numbering sequence on Kentish Road because it had been started in Gawler. As of 20/8 data matching has begun (whatever that means) and after data matching has been confirmed letters will be sent to all residential addresses to reply or dispute the matchings. On completion of the 2 week period for responses the roll out of signage can commence (no dates given for start or completion) DTEI contact is Mr Mark Morse (08) 8226 3858, Aust. Post Ms Alison Mount (08) 8402 6093 and of course Council as on page 23.

Road Safety updates; there are 4 intersections being investigated for works. DPTI are considering a (Blackspot funded) roundabout at the Blair Park Drive/Yorketown road intersection at Craigmore. DPTI is considering a (Blackspot funded) roundabout or staggered intersection at the One Tree Hill Road/Kersbrook Road/Humburg Scrub Road intersection. Main north Road/Dalkeith Road/Smith Road is being investigated as is the Philip Highway/Playford Boulevard intersection. It is obvious that there is competition for Blackspot funding monies and the community needs to put pressures on its politicians to get their spots of concern prioritised for this funding. On market Saturday there was yet another accident at the Kersbrook intersection with a fatality avoided by sheer luck not good management. Your local politicians can be contacted via email at for MP Michael O'Brien [napiet@parliament.sa.gov.au](mailto:napiet@parliament.sa.gov.au) and Nick Champion MP email address is [Nick.Champion.MP@aph.gov.au](mailto:Nick.Champion.MP@aph.gov.au)

People have complained to me on several occasions about the unsightly mess at the "T" section at **Blacktop and Yorktown Road**, unfortunately those roads are DPTI Transport Services Roads and despite Council representations to DPTI to clean up their mess nothing has eventuated. I believe that Mr Michael O'Brien MP may have better luck should he receive some emails in regards to that matter. Email address as above.

**My contact details along with Council appear on page 23.**





# THE ONLY ONE TREE HILL REAL ESTATE OFFICE & #1 SELLING AGENT!



Choose the Agents who have  
the most in-depth knowledge  
of our area, our  
lifestyle & have the most  
successful record of sales  
over the last decade.

**Lot 7 Attyford Road,  
HUMBURG SCRUB**  
4 Beds, 2 Baths  
Set on approx 12 acres.  
**\$580,000**  
Fay Hull: 0407 962 884



**Lot 12 Medlow Road,  
ULEYBURY**  
3 Beds, 1 Bath, 2 Toilets, Split  
level, 10 acres, shared bore.  
**\$585,000**  
Fay Hull: 0407 962 884



Shop 3 Blacktop Road, SA, 5114 RLA: 201543

Phone: 8280 7775 Fax: 8280 7704 Email: [fay.hull@onetreehillrealestate.com.au](mailto:fay.hull@onetreehillrealestate.com.au)

**FREE APPRAISALS by your local area expert!**

## Looking for Roller Shutters?

For a FREE Measure & Quote  
Call Your Local Supplier



**ESJ INSTALLATIONS PTY LTD.**

One Tree Hill

Contact Earl on 0409 426 255

or A/H: 8280 7741

A1 Quality Workmanship & Materials  
Repairs and Conversions on Existing Shutters

**WE WILL NOT BE BEATEN  
ON PRICE!!**

## COMPLETE *Equipment & Trailer* HIRE

KANGA LOADERS - BOBCATS - EXCAVATORS

TRAILERS ALL TYPES INCLUDING TIPPERS

HORSE FLOATS

TRUCKS & TRADIE GEAR



**EARTH MOVING REQUIREMENTS**

\* CARTING \* SPREADING \* RUBBISH REMOVAL

Phone: Jason

on 0418 823 287

Email: [completehire1@bigpond.com](mailto:completehire1@bigpond.com)

Web: [www.hiregawler.com.au](http://www.hiregawler.com.au)

Lot 10 Paxton Street, Willaston

ABN: 51 008 178 979

**WE CAN  
DELIVER!**



# Just NISSmaz

NEW, USED, RECO PARTS  
Cars, Commercial & 4WD's



**Ph: (08) 83591444**

[nissmaz@neonet.com.au](mailto:nissmaz@neonet.com.au)

## NCPS INDUSTRIAL

Pumps, Generators, Hose & Fittings  
Servicing the One Tree Hill Area



Present this advertisement for  
15% off  
recommended  
retail price on  
DAVEY household  
pressure, sump &  
pool pumps also  
MEDO septic air  
blowers

DEPEND ON  
**DAVEY**

WATER PRODUCTS



U2, 1445 Main North Rd,  
Para Hills West S.A. 5096  
Ph: 8285 2344

Email: [sales@ncpsindustrial.com.au](mailto:sales@ncpsindustrial.com.au)

Web: [www.ncpsindustrial.com.au](http://www.ncpsindustrial.com.au)

(Opposite Bunnings Parafield)

# GARDEN MULCH

Delivered to your Home

**\$50.00 per Truck Load**

(approximately 10 cubic metres)

Contact the "Cuzzies" at

Para Trees for your

Local Delivery

Vince: **0418 836 553**

Jason: **0408 857 931**

## JUST WRECKING TOYOTA'S

ABN: 83 092 676 358  
**STUART**



PHONE: **8359 4499**

FAX: **8359 4500**

Corner of South Rd & South Terrace, Wingfield. 5013

## PROPEST 1800 24 22 21

management services

**We service any pest  
No problem!**

PO Box 684 St Agnas

Residing Humbug Scrub

- \* Termite/White Ant Removal \* Termite Baiting Systems
- \* General Pest Control \* European Wasp & Bee Removal
- \* Existing and Pre Purchase Property Inspections
- \* Weed Eradication \* Free Site Assessment

[www.propestcontrol.com.au](http://www.propestcontrol.com.au)

AS/NZS ISO 9001:2000  
QUALITY CERTIFIED COMPANY



## The Northern Foot Clinic

Heel Pain, Sports Medicine, Aching Feet, Children's Feet  
Ingrown Toenails, Plantar Warts, Orthotic therapy, Mobilisation

*Pain relief today and prevention for your future*

\* 109 Haydown Rd, Elizabeth Vale (onsite parking)

\* 16 Adelaide Road, Gawler (onsite parking)

DVA, Hicaps. Medicare (GP approved only)

**8287 3888**



**OUR VISION**

*"People of faith sharing God's love as we worship and serve in the community"*



**SUNDAY—10.00am**

**Sunday Service & Sunday School**

Visiting children are welcome to attend Sunday School which takes place during the Service.

**SMYG (Sunday Morning Youth Group)**

Meet Sundays at 10.00am with the leaders.

On Sunday morning the 9th of September, our young people visited the driving range at the Tap Inn, Kent Town where they enjoyed themselves hitting lots of golf balls. This was then followed with a BBQ in the parklands.

**GIFT FILLED SHOE BOXES FOR CHILDREN**

On Sunday the 14th October we will be blessing the Christmas shoe boxes filled with presents ("Gifts of Love") - for children. If you have been kind enough to fill a box, please contact Edna on 8255 7987 to arrange pick up, or bring to the church on Sunday 14th October.

It's not too late if you would like a box to fill—contact Edna on Edna's correct phone number. (Apologies for Edna's incorrect phone number last month).

**MONTHLY FELLOWSHIP MEETINGS**

Meetings are held on the 4th Wednesday each month at 10.00am starting with Morning Tea and then a talk by a Guest Speaker.

**PROGRAMME**

**Wednesday 24th October**

Outing to the Aviation Museum.

**Wednesday 26th November**

Christmas break-up and devotions.

**EVERYONE WELCOME TO ATTEND**

**Phone Enquiries - Maureen Hill 8280 7368**

**Horse Care - Barley Grass - A Problem for all Grass Eaters**

As I write this, I watch the grass growing. But it won't be long before it starts to brown and dry off. For those of us with barley grass in our pasture, it will become a nightmare for our horses and other livestock. The growing grass may be one of the best pastures in the world, but the drying or dry seeds are a real problem. The sharp awns (tips) dig into the horse's mouth, burrowing through the skin and flesh. Barbed arrowheads mean they continue forward despite the best efforts of animals to remove them. Most will eventually work their way through the side of the mouth and out past the jaw in the form of abscesses. Some will make it to the stomach and cause trouble there. Some will be digested.

Animals with barley grass abscesses in their mouth have great gaping holes in the gums, often between teeth and lips, or under the tongue. A horse's bit rubs this area and causes more pain. Eating becomes almost unbearable. Animals on barley grass seeds will lose condition in the middle of plenty because it is too painful to eat.

If you have any horse query for Julie please email the Grapevine. Email:

[oth.grapevine@bigpond.com](mailto:oth.grapevine@bigpond.com)



Removal of the seeds is done one at a time, often with tweezers and difficulty. The animal moves constantly as you try to help it: you are putting pressure on very sore areas. The holes that are left need to be rinsed out several times a day until they heal. Food particles collecting there slow the healing process and of course, if they are still on barley grass pasture and eat more, they will collect more seeds.

If your usually easy to bridle horse starts to throw his head up as the bit goes in, suspect grass seeds. If it starts losing weight, stops eating, or foams at the mouth (usually green foam), suspect grass seeds.

If the grass is not in your paddock, it may be in your hay. Think twice about how cheap the hay is when you can't ride your horse and you need a vet to sedate the horse to remove seeds.

If you are unsure of your hay, feed in one spot so you can pick up any seeds to prevent future contamination of your paddocks.



**Sampson Flat Signage**

Thank you to the City of Playford and a member of the community for the signage (pictured on the right) to denote a heritage trail in the area. The signs are placed on the One Tree Hill Road between Black Top Road and Shillabeer Road.

Let's hope that it is the start of more signage in our area.



# E & A Vanin

## LOCAL PLUMBING SERVICES

DOMESTIC-COMMERCIAL-INDUSTRIAL

- General Plumbing Maintenance
- New Homes & Extensions
- Drains & Stormwater
- Bathroom Renovations
- Hot Water Service Changeovers

**REGISTERED MASTER**  
**PLUMBER**

**EDDIE VANIN PROPRIETOR**

**M: 0412 394 689**

**Home/Office 8280 7970**

# SEPTIC TANKS PUMPED OUT

For good old fashioned service call

# 8283 3656



## SEPTIC PUMPING SERVICES

Email: [septic1@bigpond.com](mailto:septic1@bigpond.com)

Web: [www.septicpumpingservices.com.au](http://www.septicpumpingservices.com.au)

# WOMBAT'S

- \* Bobcat & Tipper Service
- \* Excavator 4.5 tons
- \* Pig trailer & tipper (24tons)
- \* Concrete/Pavers prep & removal
- \* Post hole boring (350m-450m)
- \* Trench hole digging to (1200mm)
- \* Shed site prep
- \* Rainwater tanks prep
- \* Driveways
- \* Stock burial
- \* Civil work
- \* Retaining wall prep
- \* Roller 1.6 tons static



**Keep it Local Phone:**  
**John Mancone**  
**0417 456 656**

## Steven O'Connor

**Naturopath, using Herbal and Nutritional  
Remedial Massage Therapist**

**Dip App Sc(Ag), Adv Dip W Herb Med, Adv  
Dip Nut Med, Adv Dip Nat, Dip R Massage**  
**For chronic pain and alternative medicine  
using herbs and nutritional medicine**

**Health Rebates Apply**

**Kilberin Cornishmans Hill Road**

**One Tree Hill S.A 5114**

**82807003 0407820422**



## "ADELAIDE NORTHERN VETERINARY GROUP"

**Drs. ALAN & ROBERT IRVING, B's.V.Sc**

**Modbury—Salisbury—Elizabeth East—Elizabeth Park**

**Ph: 8280 7353 or M:0419 806 213**



**[www.adelaidenorthernvet.com.au](http://www.adelaidenorthernvet.com.au)**

**Email: [alanirving@internode.on.net](mailto:alanirving@internode.on.net)**



## Crime Report – ONE TREE HILL Rural Watch – Offences reported between 17th August and 21st September 2012

<u>29th August</u>	Arson of motor vehicle	<u>Precolumb Road, ONE TREE HILL</u>
Vehicle stolen from Salisbury Heights—burnt out at above location.		
<u>Overnight 26th &amp; 27th August</u>	Theft from motor vehicle	<u>Craigmore Road, ULEYBURY</u>
Rear window of vehicle smashed and items stolen from within.		
<u>Between 31st Aug and 17th Sept</u>	Theft	<u>Craigmore Road, ULEYBURY</u>
Attempted to break into shed on property, however entry not gained. Trailer stolen at time of above incident.		
<u>Overnight 12th Sept</u>	Property damage	<u>Medlow Road, ULEYBURY</u>
Fence on property cut—stock within paddock possible target.		
<u>Overnight 12th &amp; 13th Sept</u>	Property damage	<u>Medlow Road, ULEYBURY</u>
Trailer stored on property stolen.		
<u>Between 19th Aug &amp; 21st Aug</u>	Serious Criminal Trespass—Residential	<u>Eaglenest Drive, BIBARINGA</u>
Premises broken into via front door. Alarm activated and disturbed offenders. electrical equipment stolen.		

As always if you have any information to assist with any crime issues in the area please call Police Communications on **131 444**.



### More one liners

The older you get, the tougher it is to lose weight, because by then your body and your fat are really good friends!  
Every time I think about exercise, I lay down until the thought goes away!  
Sometimes I think I understand everything, then I regain consciousness.



I don't suffer insanity. I enjoy every minute of it!

## In The Past!

Lawn Tennis: From the Advertiser 1st October 1912

One Tree Hill—September 28th.

There was a large attendance in the Institute Hall on the occasion of a dance given by the Tennis Club, of which Miss E. Kelly is Secretary. About 130 invitations had been issued and the decorations within the building were most effective.



It was an enjoyable gathering. The guests, who were representative of Adelaide, Gawler, Salisbury, Golden Grove, Smithfield, Penfield and the immediate district, were received by Mesdames Harvey, Tregoodwell and Ifould.

### ADVERTISING RATES FOR THE GRAPEVINE

<u>Colour Ads:</u>	Eighth Page	\$30	Quarter Page	\$60
	Half Page	\$150	Full Page	\$350
<u>Black &amp; White:</u>	Eighth Page	\$20	Quarter Page	\$40
	Half Page	\$100	Full Page	\$250

Classified Ads: Just \$8.00 These are great for promoting your business, Garage Sale or Items for Sale. All ads need to be in by the deadline which is shown on the front page. Phone: 8280 7095 or

Email: [oth.grapevine@bigpond.com](mailto:oth.grapevine@bigpond.com)

Please note that you must be a resident of the One Tree Hill area or have a business in the town.



## BERNALTA

Poll Dorset and Texel

**ANNUAL ON PROPERTY  
OPEN SELECTION DAY**

**Thursday 4th October 2012**

**10.00am till 4.00pm**

**FOR SALE: 35 Poll Dorset Rams,  
12 pure Texal rams Accredited Brucellosis  
free - Accredited OJD MN3V**

**QUALITY STOCK AT A  
REASONABLE PRICE**

**Brian and Lorraine Hughes  
Lot D Harvey Road, Sampson Flat,  
One Tree Hill.**

**Phone: (08) 8280 7304  
or Mob: 0427 910801**

**Email: [bernaltastud@bigpond.com](mailto:bernaltastud@bigpond.com)**

**Dorset flock number 3287,  
Texal flock number 106**

# Kids Page

Hello to all of the Grapevine's younger readers. I hope that you are enjoying the school holidays and getting out in the lovely sunshine. I wonder what you are all doing? I hope that you still find the time to do this month's puzzles. If you would like to share with other readers an adventure you had, I love to hear from you. If you would like me to share a favourite joke or puzzle let me know. Until next month Auntie Bev.  
Email: [oth.grapevine@bigpond.com](mailto:oth.grapevine@bigpond.com) or drop me a line at the Grapevine. Postal address is OTH Grapevine P.O. Box 196 One Tree Hill Post Office, SA 5114.

\*\*\*\*\*



## Sudoku

4			3
	3	2	
	4	3	
3			2

Solution on page18

**Q: What stories do the ship captain's children like to hear?** A: Ferry tales!

**Q: Who invented fractions?** A: Henry 1/8th!

**Q: What's an insect's favourite sport?** A: Cricket

**Q: What kind of car does Mickey Mouse's wife**

drive? A: A Minnie van!

**Q: What is a volcano?**

A: A mountain with hiccups!

**Q: Why was the broom late?** A: It over swept!

**Q: What runs but never walks?** A: Water!

**Q: What is green, has four legs and two trunks?**

A: Two sick seasick tourists!

## TOPIC - Fish

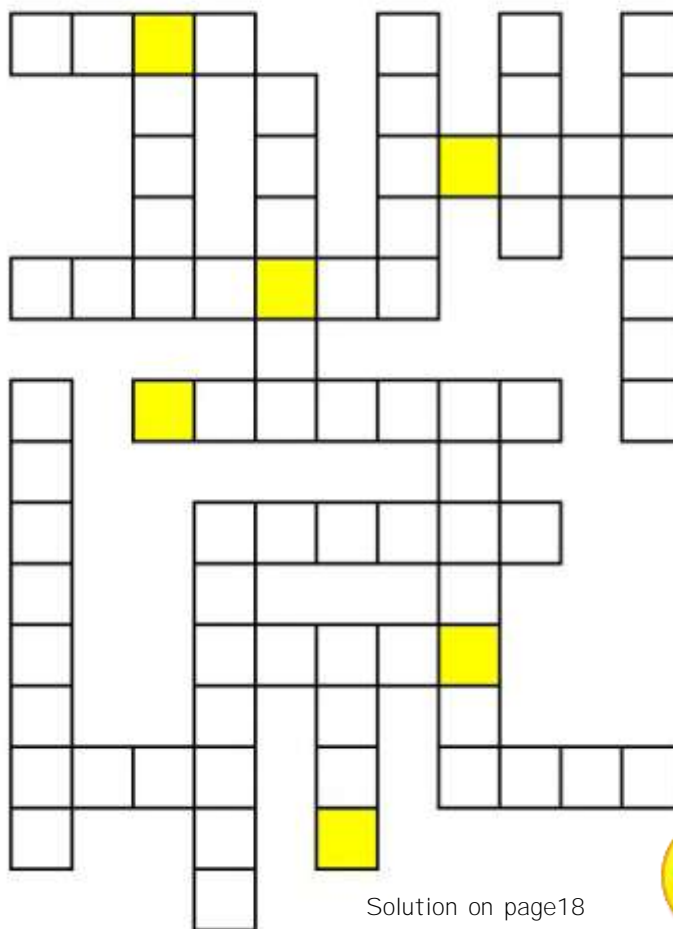
Can you find the hidden words? They may be horizontal or vertical.

T U N A P R G S H A R K H  
S B A S S Q O M A R L I N  
A M H P S V L J E J Y V G  
L U E G A M D J C W Y Q E  
M L R Q R T F V R G R N M  
O L R I D P I R A N H A I  
N E I J I A S P E R C H Z  
J T N V N H H R T A V A T  
V T G F E A V E J G N L R  
B R E A M K G U P P Y I O  
G R O U P E R R X P V B U  
B A R R A C U D A E E U T  
F L O U N D E R O A I T E

BARRACUDA, BASS, BREAM, FLOUNDER, GOLDFISH,  
GROUPER, GUPPY, HAKE, HALIBUT, HERRING, MARLIN,  
MULLET, PERCH, PIRANHA, SALMON, SARDINE, SHARK,  
TROUT, TUNA.

## MYSTERY- WORD

Can you enter the words correctly into the grid? The letters in the shaded boxes will spell out the name of the mystery word.



4 letters

BEAR  
DOVE  
DUCK  
FROG  
PUMA

5 letters

CAMEL  
EAGLE  
GOOSE  
ZEBRA

6 letters

BABOON  
JAGUAR

7 letters

BUZZARD  
CHEETAH  
GORILLA  
LEOPARD  
VULTURE

8 letters

ANTELOPE

Solution on page18



**Q: Who is the biggest gangster in the sea?**

A: Al Caprawn!

**Q: What do you get if you cross a nun and a chicken?** A: A pecking order!

**Q: Why did the kid stand on his head?**

A: His feet were tired!

**Q: What does one star say to another star when they meet?** A: Glad to meteor!

**Q: How did the farmer fix his jeans?**

A: With a cabbage patch!

**Q: What is the best thing to take into the desert?**

A: A thirst aid kit!

**Q: What is hairy and coughs?**

A: A coconut with a cold!

**Q: Why did the lazy man want a job in the bakery?**

A: So he could loaf around!

**Q: What is red and flies and wobbles at the same time?** A: A jelly copter!

**Q: Why did the man take a pencil to bed?**

A: To draw the curtains!



# Olympic Boring Contractors Pty.Ltd DRILLING WATER WELLS



Irrigation, Stock and Domestic Bores  
Specialized Machinery to Drill up to  
250m with Mud, Air & Auger

Call Michael Ferraro - Resident of OTH for 27 Years

**Ph: 0408 847 060**  
**Or: 8380 9474**

## ONE TREE HILL POST OFFICE

YOUR ONE  
STOP SHOP TO  
PAY BILLS

ONE TREE HILL



NEW  
GIFTWARE  
ARRIVING



GIFT & POST  
FOR ALL YOUR BANKING,



BILL PAYING, POSTAL NEEDS, GIFTS AND LOTS MORE

**Ph: 8280 0090** **FAX: 8280 0030**

OPENING HOURS: MONDAY TO FRIDAY 8AM - 5PM

SATURDAY 9AM - 12PM



SHOP 1B LOT 2 BLACK TOP ROAD, ONE TREE HILL, 5114

### ADVERTISING RATES FOR THE GRAPEVINE

Colour Ads: Eighth Page	\$30	Quarter Page	\$60
Half Page	\$150	Full Page	\$350
Black & White: Eighth Page	\$20	Quarter Page	\$40
Half Page	\$100	Full Page	\$250

Classified Ads: Just \$8.00 These are great for promoting your business, Garage Sale or Items for Sale. All ads need to be in by the deadline which is shown on the front page. Phone: 8280 7095 or

Email: [oth.grapevine@bigpond.com](mailto:oth.grapevine@bigpond.com)

Please note that you must be a resident of the One Tree Hill area or have a business in the town.

# SALE

from Pat the  
Drum Man



**New & Used**

**IBCs**  
From \$30 EA  
**NEW IBCs**  
Food Approved  
**\$330**



Pallet Tanks

Open  
Mon - Thurs  
6am - 3pm  
Friday  
6am - 2pm

Valves  
Adaptors  
Bungs  
Caps  
Spouts

Tanks  
& Drums  
suitable  
for Wine  
Storage



Thank you for  
"Defending" Australia!  
**20% OFF**  
for all current and  
ex defence force  
personnel



**NEW!**  
20L & 60L  
Tins available



Half cut drums  
perfect for  
camping  
**\$16.50** each

Drums suitable  
for Petrol  
or Diesel  
Keep the  
mice away



Tanks & Drums suitable  
for almost any product  
or chemical you like!  
Spare Parts &  
Fittings available!

Container Reconditioning  
Services Pty Ltd  
**Ph: 8359 7011**  
180a Cavan Rd, Dry Creek



## 1st Place at the Royal Adelaide Show

Well known local ,Tracey Manser, finally has a 1st Place in the Adelaide Show. She has been entering her delightful cooking in the Royal Adelaide Show for many years. Finally this year she has the elusive 1st place ribbon. Tracey can now brag about her brilliant win in Category 602, this was for a Tea Cake, with cinnamon and sugar topping., she also picked up two 3rd places with her Fresh Jam and Jelly Cakes.



Some of you may not realize that there are some really serious cooks out there that compete for the 1st Place in various sections in the cooking class at the show. It takes quite a while to prepare the perfect cake or jam and of course there are sometimes when things don't go to plan and the family enjoy a helping of the rejected item. There are hundreds of entries in many sections, it can become quite serious but of course it's still a lot of fun.

Tracey, if you don't know, is the lady who organises the One Tree Hill Junior Chef baking competition. The Junior Chef is held at the Market on the 1st Saturday of each month. Further details are on page 21. It's a really popular event that attracts quite a few children each month and offers great cash prizes and sometimes gifts. Who knows some of these budding chefs may go on to enter the Royal Adelaide Show all because Tracey has encouraged local kids to have a go.



I am sure that you will join us in congratulating Tracey on her win.

## HARNESSING SUCCESS AT ONE TREE HILL

One Tree Hill was once the home of several thoroughbred studs including Milluna, Nyroca and Glenacres all of who were well known names in the racing world.



Articoke running on 14<sup>th</sup> January 2012, Summer Carnival driven by Wayne Hill (purple with blue diamonds)

These days, located on what was once the back half of Nyroca, local Geoff Easom breeds and races pacers and trotters (Standardbred harness racing horses) on his Wyndown Stud, Humbug Scrub Road, One Tree Hill. Geoff has been a resident of One Tree Hill for 30 and his stud produces up to 15 foals annually making Wyndown Stud **one of SA's successful studs. Folks from the OTH walking group** may have seen some of the horses while walking the fire track that divides the farm.

In the season just completed, horses bred and owned by the stud won 38 races locally and in Victoria. This included many talented horses greeting the winning post, including the pacers Artichoke, Android, Force Ten Gale, Martial Artist and the trotter Sparks Ignite to name a few.

A highlight of the year was the return to race driving by top female driver Danielle Hill who lost the sight in one eye and sustained serious facial injuries in the horrific race fall at Globe Derby a couple of years ago. Dani, who is only 28 years old, first comeback win was on a Wyndown Stud horse Hair Trigger and she has gone from strength to strength since. It was **coincidental that Dani's first ever** race win in 2001 when she was just 17 years, was also on a Wyndown Stud horse, King Hitter. Great success from for a dynamic young mum on One Tree Hill bred horses.



Horses from Wyndown stud raced in SA are trained at Penfield by long time friends Jill and Wayne Neilson and wear the colours purple with light blue diamonds. Jill was the leading lady trainer in the state for the first time. So if you ever attend the harness racing and see a horse in these colours trained by Jill, they were born and raised at Yattalunga right next to One Tree Hill.





A great place  
to live, work  
and play

## Are you bushfire ready? Prepare your property now.

If you received a letter recently about Chilean Needle Grass, please refer to it for additional information regarding the timing of your bushfire prevention measures.

### You should ...

- Clear dead and flammable plants 20 metres around your house and other buildings on your property
- Clear five metres around other structures/sheds on your property
- Prune tree limbs and branches which overhang your home
- Remove bark, heavy mulch, wood piles and other flammable materials close to your home and shed
- Regularly clean your gutters
- Cut long grass (from both occupied and vacant land allotments)
- Create fire breaks
- Clear flammable weeds from your property including phalaris, wild olives, gorse, blackberry and boneseed
- Create access to an alternative water supply (at least 5,000 litres) such as a swimming pool or water tank
- Purchase a petrol/diesel powered pump to draw from the alternative water supply in case the electricity supply is cut.

### You can ...

Modify or remove vegetation further than 20m from your house to reduce fuel loads **WITH A PERMIT FROM THE CFS**. Native vegetation is protected by law under the Native Vegetation Act and permission is required to clear it on your property.

Please be reminded that any mowing or alterations on roadsides requires permission to be obtained from Council in accordance with the Local Government Act 1999. If you wish to mow your road verge outside of the CNG control time please call 8256 0333 to arrange for a permit.

### For more information contact:

Dave Watson, Fire Prevention Officer, City of Playford, phone 8256 0333. CFS Bushfire Information Hotline, phone 1300 362 361 or visit [www.cfs.sa.gov.au](http://www.cfs.sa.gov.au). Collect a CFS Fact Sheet from City of Playford Customer Care Centres: 10 Playford Blvd, Elizabeth and Munno Para Shopping Centre, 600 Main North Road, Smithfield.





**SPRINT**  
AUTO PARTS

PROUDLY SUPPORTING SA!

EVERY Car. EVERY Part. EVERY Day.



**SPRINT has all your parts & accessory needs!**

Fluids! Hard Parts! Car Care!

**With 35 stores, we're always just around the corner.**

PROUDLY SA OWNED & OPERATED SINCE 1984  
35 STORES - OPEN 7 DAYS\*

GET DISCOUNTS ON PARTS & ACCESSORIES!  
BECOME A SPRINT AUTO PARTS VIP CLUB MEMBER

For your nearest store, go to [www.sprintautoparts.com.au](http://www.sprintautoparts.com.au)

Advantage! fb

EVERY Car. EVERY Part. EVERY Day.  
For your nearest store, go to [www.sprintautoparts.com.au](http://www.sprintautoparts.com.au)

**SPRINT**  
AUTO PARTS

**Olympic Boring Contractors Pty.Ltd**  
PUMP SALES & SERVICE



**OLYMPIC**  
BORING CONTRACTORS P.L.  
PUMP SALES & SERVICE  
MEMBERSHIP IN GRUNDFOSS

Specializing in Design & Installation of Submersible Pumps  
Supply & Installation of Domestic Pumps  
Sales & Pump Service  
Over 35 Years of Experience

Call Michael Ferraro OTH Resident for 27 Years

**Ph: 0408 847 060**  
**Or: 8380 9474**

**One Tree Hill Institute**



A great venue to hold an Engagement Party, Wedding, Special Birthday, Reunion, Meeting, Naming Day or Other.  
Competitive Rates available.  
Check us out on the web :  
[www.onetreehillhall.com.au](http://www.onetreehillhall.com.au)  
or Phone: 8280 0000  
or Email: [oth.hall@bigpond.com](mailto:oth.hall@bigpond.com)

**FLOORINGXTRA**

FREE QUOTES for all your flooring needs  
Carpets and underlay, Vinyls, traditional timber and laminate flooring and quality brand name blinds  
Phone your local representative Peter (lives at OTH)

FLOORINGXTRA has buying power because there are 150 stores across Australasia, we get the better deals for you!  
You'll find a huge range of prices across our flooring and blind product range.  
If by chance we don't have it, we'll find it!

**THE BIGGEST RANGE**  
**THE BEST BRANDS**

North East FLOORINGXTRA  
430 North East Road, Winsor Gardens  
Phone: **8369 1780**  
[nec@sa.chariot.net.au](mailto:nec@sa.chariot.net.au)





# FARM MACHINERY

Local Sales for Small/Medium Farms

\* Slashers (5' and 6')

\* Backhoes

\* Wood Chippers - (3PL)

\* Fertilizer Spreaders

\* Tow Along Mowers (For ATV/4WD)



Stock at Hand  
& Orders Taken

Direct Importers, So Great Prices Ph: 0406 382 342

www.safarmequipment.com Uleybury

**ONE TREE HILL**

**GENERAL STORE**

Now with a sit down area to enjoy your freshly brewed coffee and irresistible cake

Check out the ever changing hot food items as well as a selection of gourmet cakes and slices

The General Store's New Opening Hours are  
Monday to Friday 7.00am till 6.00pm  
Saturday and Sunday 8.00am till 5.00pm  
Public Holidays 8.00am till 4.00pm  
Closed Good Friday, Christmas Day & New Years Day  
We have a large range of groceries, magazines, confectionery and kids toys.

ATM now in store

**PH: 8280 7020**

Agents for SA Lotteries



## Halloween Safety Tips

It's that time of year again when the children of the house turn into little ghouls! Halloween is becoming increasingly popular in Australia, with widespread merchandising and promotion of the evening ensuring children across many of our suburbs want to dress up in costumes and go door to door "trick or treating". Before children take to the streets, police recommend that parents talk to them about how to behave, to help them stay safe when they're out and about on the evening.

These Halloween safety tips are to help parents and caregivers have a safe and enjoyable Halloween!

- \* Children 'trick or treating' should be accompanied by a trusted, responsible person.
- \* Children and young people should walk, not run, when going from house to house.
- \* They need to obey traffic rules, watch out for cars, use proper road crossings where available and watch out for smaller, younger children.
- \* Children should stay on the footpath at all times. If there is no footpath, walk single file on the right hand side facing traffic, or reconsider allowing the children to use that route.
- \* Take extra care when crossing roads as children may find it hard to see so well in a costume.
- \* If using a skateboard, roller-blades or bikes, a helmet must be worn.

\* After knocking on the door and saying "trick or treat" children or young people should stay at the front door and not enter the person's house, even if invited inside while the person looks for treats.

\* Sometimes, a person who's door knocked either doesn't want to participate or selects a trick instead of providing a treat. Children and young people should be told any trick must not cause them harm, fear or damage or be abusive in anyway.

\* Be respectful of other members of the community as not everyone celebrates Halloween. Some people will be genuinely concerned or fearful of any door knockers. If you are aware of someone like that make sure your children know not to bother them.

\* Parents may consider an alternative to "tick or treating" by holding a Halloween party at homes; that way children are supervised and still celebrating Halloween.

\* If a house full of "little monsters" is not appealing, neighbouring families could set up a safe house arrangement, where children are given a list of addresses of participating families to door knock in the locality, and these are the only houses they go to.



## Fruit Smoothies

### Fruit Smoothie

#### Ingredients:

2 cups pineapple juice	2 bananas
2 cups vanilla yogurt	1 cup strawberries
1/4 cup wheat germ	1 teaspoon vanilla

**Method:** In a blender combine pineapple juice, bananas, yogurt, strawberries, wheat germ and vanilla extract. Blend until smooth.

*A lovely healthy drink enjoyable by young and old.*



### Intense Fruit Smoothie

#### Ingredients:

300 frozen mixed berries  
400g can sliced peaches  
2 tablespoons honey

**Method:** In a blender combine frozen fruit, canned fruit and honey. Blend until smooth.

*This is delicious booster, try it on a warm day.*



# SPRAYING TO KILL WEEDS

Its time to start getting out there and do some spraying of weeds. Generally the weeds are at an early growth stage at this time of year and so it is the prime time to hit them with a herbicide before they take a real hold.

You will still need to pick the right day to do the spraying as you do not want to do it when it is windy, hot, raining or about to rain within 24 hours. The herbicides tend to do their job best when given the chance to dry on the plant over a 24-hour period of dry weather.

Before you get too carried away, make sure that you are applying the herbicides with due consideration to the fact that you are using chemicals that are usually poisonous by nature. Read all that you can about the safe manner of application and protective equipment and clothing that should be used. Products when purchased should be supplied with safety information but some of this information tends to go missing if it has been sitting around in your shed for some time. Going on the internet will usually give you the opportunity to track down a material safety data sheet (MSDS) for the product. If you have a container of herbicide that is not clearly labelled anymore then it is best to not use it unless you are very confident as to what it is and how to apply it safely.

*There are two broad types of herbicides used for the controlling of weeds.*

**Pre-emergence herbicide:** A herbicide that controls weeds before they emerge from the ground

This type of herbicide is applied to the soil and is taken up by the emerging root, shoot or both root and shoot of the targeted weed. Some of these herbicides can enter through the leaf of the plant but this is not really the intent, as you would usually use this herbicide in a seedbed where the weed has not presented itself as yet.

**Post-emergence herbicide:** A herbicide that controls weeds after they emerge from the ground.

In this category, Glyphosate type herbicides are possibly the most common group available and a couple of the common trade names for this type of herbicide are Roundup and Zero. Glyphosates are commonly sold in formulations of 120, 240, 360, 480 and 680 g active ingredient per litre with 360 being widely used in agriculture. It is used to kill a wide variety of plants including broadleaf, woody and grasses.

**Additives:**

### Cationic Surfactant:

If the plant that you are targeting has a naturally waxy layer on its leaves, you might need to add a “cationic surfactant”. This is a fancy name for a detergent based material that will break down this natural barrier on the leaf and give the herbicide a better chance to be absorbed by the plant so that it can do its job.

**Spray Dyes:** A dye can be added to the herbicide, which will let you see where you have been. This is a particularly good idea as it can save a lot of money and time being wasted on either over doing a spaying job or even worse, missing areas.

Be thoughtful to others, do not spray if children and pets are nearby and ensure that no spray can get into the natural watercourses. Always ensure that no chemicals can drift over onto neighbouring properties or you could leave yourself open to civil law action especially if the neighbour has organic certification.

*There are many herbicides available for targeting specific types of weeds and several charts are available that can offer a cross-reference for each.*



**Easy Marbled Choc-Chip Slice**  
Recipe on page 17

**Whoops sorry about that!**

Martin, was in the hospital on his death bed. The family called Martin's Preacher to be with him in his final moments. As the Preacher stood by the bed, Martin's condition seemed to deteriorate, and Martin motioned for someone to quickly pass him a pen and paper. The Preacher quickly got a pen and paper and lovingly handed it to Martin. But before he had a chance to read the note, Martin died. The Preacher feeling that now wasn't the right time to read it put the note in his jacket pocket. It was at the funeral while speaking that the Preacher suddenly remembered the note. Reaching deep into his pocket the Preacher said "and you know what, I suddenly remembered that right before Martin died he handed me a note, and knowing Martin I'm sure it was something inspiring that we can all gain from. With that introduction the Preacher ripped out the note and opened it. The note said" **HEY, YOU ARE STANDING ON MY OXYGEN TUBE!"**.







## DON'T FORGET - ONE TREE HILL PRIMARY SCHOOL WORLD RECORD

ATTEMPT FOR 40TH BIRTHDAY, OCTOBER 16TH 12 NOON



The invitation to participate is open to ALL family members, friends and the community. It would be wonderful to see parents, grandparents, ex-students, ex-staff and younger children all dressed up and maybe some clubs from around the town may like to join them. It will all begin at 12noon and end at 6.00pm. Channel 10 is going to be present from 1.30pm and cross live from our school to the news bulletins throughout the afternoon and to the weather in the evening. From 3.30pm—5.30pm each of our classes will run a stall to provide fun activities and things for everyone to do. The official record attempt will be at 5.30pm during an assembly where a few past staff members will share memories, and some classes will show case their work.

## Trivia Questions

1. How many countries are larger than Australia?
2. In what state/territory was the highest recorded temperature, of 53oC, recorded?
3. Australia has the world's largest sand island. What is its name?
4. In what year was Advance Australia Fair proclaimed as the national anthem by the Governor-General?
5. Do all states/territories have the same blood alcohol limit for non-probationary drivers?
6. What animal is on the Western Australia flag?
7. In what city did the Commonwealth Parliament first sit?
8. What animal featured on the 5 cent coin?
9. Who is the only person to have been awarded both the Australian of the Year and Young Australian of the Year titles?
10. Who is on the front of the current issue \$100 note?



Answers: 1: Five (Australia is the sixth largest country: Russia, Canada, China, USA, Brazil). 2: Queensland. 3: Fraser Island. 4: 1984. 5: Yes. 6: Black Swan. 7: Melbourne. 8: Echidna. 9: Cathy Freeman. 10: Dame Nellie Melba.

1. Which horse won the Melbourne Cup in 2002?
2. What was Sir Donald Bradman's batting average?
3. Who is Australia's only Formula One driver?
4. Who won the Brownlow Medal in 2003?
5. Who was the most recent Australian to win the men's singles title at Wimbledon?
6. Which Australian was named the most valuable player in the US's WNBA?
7. Which Australian has won the FIM World Motorcycle Championship 5 times?
8. How many gold medals did Australian's win at the 2002 Winter Olympic Games?
9. Of our Australian male swimmers, who has won the most Olympic gold medals?
10. What Australian company is the largest surf wear manufacturer



SALT LAKE 2002



Answers 1: Media Puzzle. 2: 99.94. 3: Mark Webber. 4: Mark Webber. 5: Adam Goodes. 6: Layton Hewitt. 7: Michael Doolan. 8: 2 - Steven Bradbury and Alisha Campin. 9: Murray Rose. 10: Quiksilver.

\*\*\*\*\*

### Easy Marbled Choc-Chip Slice

Prep Time: 10 minutes

Cook Time: 20 minutes

Serves 8

**Ingredients:** 485g Betty Crocker Milk Chocolate Cookie Mixture or similar, 1/3rd Crushed Nuts, 80g butter, softened, 1 egg, 180g White Chocolate, chopped, 200g Milk Chocolate, chopped.

**Method:** Preheat oven to 180° or 160° for fan forced. Line a 28cm x 18cm slice tin with glad bake, extend paper over edges. Empty contents of cookie mixture packer into a bowl and add nuts, add butter and egg, mix with a wooden spoon, and then your hands to combine evenly. Press into the tin with the back of a spoon. Bake for 20 minutes or until golden brown. Cool in tin. Place chocolate in separate bows and microwave, one at a time, for 2 minutes or until soft. Stir until smooth. Drop spoonful's of chocolates onto the slice and use a skewer to created a marbled effect. Place in fridge for 20 minutes or until set. Stand slice at room temperature for chocolate to soften slightly and cut into squares to serve. Pic on page 16.



## One Tree Hill Cricket Club

Our club is looking for new players in the men's, women's and junior grades of the Para Districts Cricket Association.

Junior training  
Thursday afternoon from 3.30 pm  
McGilp Oval

Senior training  
Thursday evening from 5.00 pm  
McGilp Oval

Contact  
Brian Walter (Treasurer) 0418 815 047  
Dave Armitt (Secretary) 0419 695 359 (ah)  
for more information

Players of all abilities are welcome.  
Come and join 'The Billies'

## One Tree Hill Under 8s Season 2012

This year I played for the One Tree Hill Soccer Club under 8s. We won 10 games, we lost 10 games and we drew 2 games. I scored 3 goals this season. The people in my team are called Bradley, Archer, Lochie, Jaxon, Ezra, Declan, Jamie, Tyson, Zack, Ryan P, Cody and me.

At our first game we won against Parafield Gardens. We had 2 draws, 1 loss and 1 win against Elizabeth Downs. We managed to beat every team except Modbury Vista and Para Hills Black.

The main thing we improved at was PASSING! I had lots of fun this season, so BRING ON NEXT SEASON!

By Ryan D.

Great to hear from one of our younger readers, it sounds like Ryan had a fun year at the OTH Soccer Club.

We would like to encourage more youngsters to email or write to us to share their experiences. Full details are on page 2.



## HORSE RIDING LESSONS

All ages

All riding levels

Premium facilities

Professional coaching

On fully-trained horses or on your own

Flatwork, jumping & horsemanship

0425 861 169

nyroca@senet.com.au

One Tree Hill

## Rob Green Security

Servicing, Installation, Monitoring  
Your Local Technician

Ph: 0419 398 346



Sudoku Solution  
to puzzle on page 10.

4	2	1	3
1	3	2	4
2	4	3	1
3	1	4	2

## MYSTERY-WORD Solution





# ONE TREE HILL FODDER & RURAL SUPPLIES

Shop 4/9 Black Top Road,

One Tree Hill

Ph: 8280 7680

Email: [sales@onetreehillfodder.com](mailto:sales@onetreehillfodder.com)

Hours of Trade:

Monday to Friday 7.30am to 6.00pm

Saturday & Sunday 9.00am to 4.00pm

Welcome to October in One Tree Hill

**EXPECT \* A touch more rain, grasses to grow fast,  
lambs to fatten fast, horses to get active!**

## Want to sell your cattle or sheep?

You need National Livestock tags from Leader. Tell us your PIC number and how many tags, we do the rest.

## Trying to kill off those weeds that have suddenly raised their heads?

We stock a wide range of chemicals from kill all Glyphosate to targeting specific weeds in 1 litre, 5 litre and 20 litre drums. We also have a wide range of Backpack Sprayers, 1, 2 and 5 litre Sprayers and now have direct accounts with Silvan, Rapid Spray and Kincrome for 50 litre, 100 litre Ute packs.

**Yes it is snake season** and we are stocking the preferred brand of Snake Repeller. 2 units good for 30 diameter each, solar powered with ever changing vibration patterns. Replacement batteries, chargers for poor days and a spare parts back up makes these great value for money \$125 each twin pack.

## The horse in the back paddock running short on water?

Green Line or Blue Line poly pipe, all the fittings, 20mm to 50mm, many lengths, plus Polymaster paddock troughs and stable drinkers. A wide range of feeder troughs, stable feeders etc even in pink!!!



**Maxiplas tanks** have no centre pole to cause problems later in the life of your tank. 22,500 litre down to 1,000 litre Round, Square, Urban. Collect the nectar of the gods and enjoy cold rain water for years.

**The barbie wont work too well without gas.** Fill your 8.5kg cylinder for \$20. This is the price we set at Easter 2011 but we can only continue it with volume. Tell your friends.

**Chainsaw sharpening** (chain only please) chain oil, new chains (3 day delivery and generally \$30 to \$35) - give us an old one. 2 stroke oil, wide range lubricants.

**Want to hire a trailer like 6 x 4, 8 x 5 flat and with cage or shift a car?** OTHF Trailer hire 24 hour only, various sizes.

## Had enough of getting out of the car to open the gate?

We can supply you with an electric gate opener, solar generated power or 240 volt, single or double gates, sliding or hinged, with remote control, keypad, electronic lock or all of the above at prices starting at \$1,075. These kits are great value and can save you a lot of pain.

## The old rake or shovel given up the ghost?

We are stocking a range of Cyclone garden tools like rakes, shovels, hoes, weeders, blocksplitters, axes, picks, mattocks, pruners, shears, loppers and hand tools. We also have crow bars, rakehoes and pincers for digging holes.





# Air Conditioning & Complete Electrical Split Systems

Servicing the One Tree Hill Area

Deal Direct With Local Tradespeople  
Phone for a FREE Quote Today

**Air Conditioning & Electrical Installations**  
**'We can Supply & Install Wall Split Systems**  
**Or Ducted Split System Air Conditioners'**  
**All Brands Available**

Call Now & Have Your Unit Installed Before Summer  
Phone: Peter, Ryan or Leon Moyle

**0407 463 310 A.H. 8280 7442**

Email: [completesplits@gmail.com](mailto:completesplits@gmail.com)

PGE139465 L051080

## Need a Skip?

### Rubbish Bins and Mini Skips

from 2m3 to 60m3

Call your local Skip/Bin Provider today!



Daniel 0414 280 891

Ken 0488 360 360

**D3**



**DISTRIBUTION 360 Pty Ltd**

*Waste to Resources*

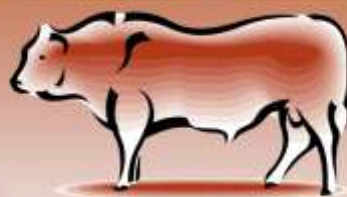
## L & R Canopy Services Trailer Repairs

- **FREE** Quotes
- Welding
- Electrical
- Mechanical



Contact Ross on **0447 565 870**

## Kamcheyenne Limousin



### BUY YOUR BEEF WITH CONFIDENCE !

NO added chemicals, NO antibiotics, NO hormone growth promotants,  
NO added colourings or water

WE GUARANTEE

HEALTHY, CLEAN, LEAN, TENDER and LOCAL YEARLING BEEF.

Sides of beef sales \$7.50 per Kg – average side weighs 90-100Kg.  
Why not share with a friend, family member or neighbour

Commercial and Stud Cattle Sales also available

Ring Sarah 0402 099 106

or John 0427 131 018

Or Email us at [jpopow@senet.com.au](mailto:jpopow@senet.com.au)

Shillabeer Road, One Tree Hill



No Job  
Too Big or  
Too Small

**Professional Tree & Stump Service**

**Call Brad for FREE QUOTES**

**on: 8365 8000**

**Don't Forget to ask for our  
Special Grapevine Price....**



# COMMUNITY DIRECTORY

Hall Hire Ph: 8280 0000 or 0459 105 045

Council Member	Joe Federico	0417 016 164
C/Member & JP	Andrew Craig	0417 016 160
Cricket Club	Brian Walter	0418 815 047
Friends of Para Wirra	Patsy Johnson	8280 7279
Home Assist	Playford Council	8256 0355
Market Contact	June B.	8287 3306
Nth Hills Pony Club	Kylie Scheffers	0422 882 184
OTH Grapevine	Editorial Team	8280 7095
OTH Progress Ass	Secretary	8280 7095
OTH Playgroup	Monday	0448 354 990
OTH Playgroup	Wednesday	8284 4555
OTH Primary School	Front Desk	8280 7027
Playford Band	Ivor McLatchie	8280 7214
Scout Group	Trevor	8255 3115
Senior Citizens	Martin Lindsell	8254 9248
Soccer Club Registrar	Sonia	0413 452 993
Tennis Club	Gary	8280 7067 or 0415 399 658
Walking Club (Walkie Talkies)	Helen	8280 7035
Wine Grape Growers (OTH Region)		
Fay	Ph: 8284 0201 or Natalie	8280 7335

Junior Chef Results of the Bake-Off for August are as follows:



## Chocolate Cake

### Age 5—8 years

1st: Joshua  
2nd: Kiahnah  
3rd: Cody

### Age 9—13 years

1st: Brianah  
2nd: Samuel  
3rd: Joana

## September Results as follows:

### 5—8 years

1st: Jesse  
2nd: Cody



### 9—13 years

1st: Joanna  
2nd: Abigail



# One Tree Hill Junior Baker Competition

Conditions of entry: The item of cookery to be submitted along with size and quantity will be published in the Grapevine in the month prior to the One Tree Hill market day. One entry per person.

This will allow for seasonal baking such as Christmas and Easter.

Entries are to be delivered to the One Tree Hill Junior Baker's table at the market between 9am and 9.30am. You will be required to make 3 identical items for the theme of the month. Paper plates will be supplied and entry cards including entry number will be attached. Judging will commence at 9.30am.

There are 2 age categories: 1) Ages 5 to 8 years 2) Ages 9 to 13 years.

Prizes for each category are 1st: Blue Ribbon and \$15.00 2nd: Red Ribbon and \$10.00 3rd: Green Ribbon and \$5.00. Entries can be collected along with prizes by 1pm.

How to enter: You will need to email (oth.grapevine@bigpond.com) or complete the entry form and mail to One Tree Hill Progress Association, PO Box 196 One Tree Hill SA 5114. Or drop it into the General Store. You must include your name, age and phone number. Theme for October is Pasties, Meat or Vegetarian, please note only 1 pasty is required. Registration must be completed before Thursday 4th October for the October Competition.

Please note entries for November must register before Thursday 1st November. Good luck.

 Theme for November is **ROCK CAKES**



Name	Age	Phone



# Country Estates

RLA 100925

SAMPSON FLAT/ONE TREE HILL \$690,000



27 acres

ONE TREE HILL \$595,000

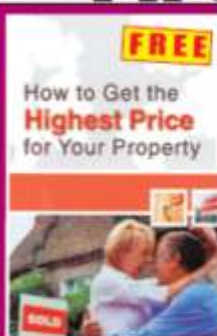


10.5 acres

Providing the Highest Standard of Ethics & Service ~ [www.countryestates.com.au](http://www.countryestates.com.au)

## Hills & Country Specialists

Shop 1&2 Birdwood Plaza,  
20 Shannon St, Birdwood SA 5234  
**PH 8568 5105**



A book that could make you THOUSANDS of dollars.  
**Yours FREE**

This book shows how to present your property for sale and gives you tips on how to select, and work with, a real estate agent.  
Whether you are an experienced property seller or a novice, this book could make you THOUSANDS of dollars.  
It's yours FREE - no charge or obligation.  
Contact us now and we will send you a copy.

ONE TREE HILL 34, 34, 39 & 59 acres from \$380,000



ONE TREE HILL \$570,000 ONE TREE HILL \$690,000



4.87 acres 10 acres

**Birdwood Pump  
& Irrigation Services**  
Now Servicing the One Tree Hill area  
We Specialize in  
Agricultural Bores, Pumps & Irrigation  
All Makes & Models Available

**Call David**  
**0438 685 089**



Agents for Grundfos Sales

## TELESIGNAL ANTENNA SYSTEMS Pty Ltd

Government Endorsed TV  
Antenna Installer

- Digital TV Antenna Installations
- Extra TV Points
- Digital Box Set Up & Tuning
- Tune & Set up TV, Video, DVD's & Blu-ray
- Pay TV Cabling
- Watch Foxtel in any room with a Pay TV System

Call for a FREE Quote Today, Local Resident

Ph: Ian George 0417 809 403

Email: [telesign@bigpond.net.au](mailto:telesign@bigpond.net.au)

Website: [www.telesignal.com.au](http://www.telesignal.com.au)



## AIR CONDITIONING

### SEYMOUR HEATING & COOLING

Installations of Ducted Reverse  
Cycle, Ducted Evaporative,  
Ducted Gas, Combustion Heaters  
and Servicing



**20 Years Experience**  
For a FREE Quote call

**Wayne on 0411 410 889**

## AUTO

### FRANK'S BLACKTOP AUTO General

Engineering  
Repairs to  
4-Wheel Drives  
& All Mechanical  
Repairs  
Black Top Road  
One Tree Hill  
Ph: 8280 7255 or  
0410 490 246

## AVON

**New Avon**  
Representative  
For product sales  
and enquiries  
please contact

**Helen Tilley**

**P:8280 7757**

**M:0438 807 757**

E: [tilleyfarm@bigpond.com](mailto:tilleyfarm@bigpond.com)

## BEAUTY

### BEST DRESSED MOBILE TAN \$30.00

Vani T  
Naked Tan  
St Tropez  
Call Lea

**0411 416 011**

[www.bestdressed.net.au](http://www.bestdressed.net.au)

Conditions May Apply

## ENJO



For product  
enquiries,  
demonstrations  
and all your  
ENJO needs  
contact  
Beni Hite  
Ph: 8280 7815 or  
0403 763 826

## ELECTRICAL

### ROGER GIRDHAM ELECTRICAL

For all your  
Electrical  
Installations &  
Maintenance  
Jobs

Call Roger on  
**0417 853 863**  
or **8280 7788**

## FRAMING

### B Creative Framing

Custom Framing  
Computerised Mat  
Cutting Service  
Shadow Boxes  
Canvas Prints  
Block Mounting  
and much more....

For further  
information please

contact us:  
**0426 209 477**  
[admin@bcreativeframing.net.au](mailto:admin@bcreativeframing.net.au)  
[www.bcreativeframing.net.au](http://www.bcreativeframing.net.au)

## GARDENING

Geoff Jacobson for all  
your gardening needs

- \* Lawn Mowing
- \* Tree Lopping
- \* New Lawns
- \* Fertilising
- \* Weed Control
- \* Pruning
- \* Rubbish Removal
- \* Landscaping
- \* Shed Cleanouts

Ph: **131 546** or  
M: **0407 733 832**

## MAINTENANCE

### WARNER'S HOME MAINTENANCE

- \* Gardening
- \* Odd Jobs
- \* Painting
- \* Pruning
- \* Gutter Cleaning
- \* Basic Home  
Maintenance

Call Pete:  
**0433 619 108**

## PEST CONTROL

### BEST PEST CONTROL

- \* Spiders
- \* Earwigs
- \* Millipedes
- \* Bees
- \* Ants
- \* Flies
- \* Termites

Call Paul on  
**0418 893 411**

## PHOTOGRAPHY

### B Studios

Photography  
Videography  
Life Castings

We specialise in Wedding  
photography and  
videography as well as on  
location or studio sessions  
We also produce timeless  
Life Castings of your baby,  
children, adults or pets  
For more information and  
price list please contact us.

Ph: **0459 529 477**

[admin@bstudios.net.au](mailto:admin@bstudios.net.au)  
[www.bstudios.net.au](http://www.bstudios.net.au)

## PLANTS

### DEALTRY NATIVE PLANTS WHOLESALE

Trevilla Road, (Off  
Frank Barker Road

OPEN 1st Two  
Weekends each

Month 10am-4pm

Plants from \$1.00

Phone for directions

Ph: **8280 7079** or

**0402 010 877**

Gift Vouchers Available

## ROAD GRADING

ROAD GRADING  
in One Tree Hill  
and the  
Surrounding  
areas

Call for a FREE  
quote for all  
Grading & Road  
Maintenance  
Contact Merv on  
**0428 261 170**

## YOGA

### YOGA FOR ALL CLASSES WEEKLY

Monday & Tuesday  
7.00pm—8.30pm

Tuesday & Thursday  
10.00am - 11.30am

Accelerated  
Emotional Change

Workshop

Saturday

13th October 2012

9.00am till 12 noon

Includes morning tea  
Call Kim

**0412 192 076**

### Playford Council Contact Details

24 hour Emergency & Lost/found dogs

8256 0333

General Enquiries and Burning Permits (seasonal ) 8256 0333 Email: [playford@playford.sa.gov.au](mailto:playford@playford.sa.gov.au)

Libraries: Elizabeth 8256 0334

Munno Para 8254 4600

When telephoning council with a request please remember to get a Customer Registration Number (CRN) to ensure registration and easy identification of your communication.

You can also phone or email your local Councillors.

Joe Federico Ph: 0417 016 164

Email: [jfederico@internode.on.net](mailto:jfederico@internode.on.net)

Andrew Craig Ph: 0417 016 160

Email: [adcraig@ihug.com.au](mailto:adcraig@ihug.com.au)



## Community Notice Board

Do you have an upcoming Community event or a special announcement that you would like printed on this page? Keep notices as brief as possible please.

Email or call with your details. Email: [oth.grapevine@bigpond.com](mailto:oth.grapevine@bigpond.com) Phone: 8280 7095

Please note deadline date on the front cover for each edition.



# Chilean Needle Grass Field Day

**SATURDAY NOVEMBER 3rd 2012**

**WHERE:-** One Tree Hill (signage from Blacktop/Crosshill Road).

**WHEN:-** Starts 9.30am—Finishing 12 noon.

**WHAT WILL YOU LEARN:-**

- \* How to identify Chilean Needle Grass
- \* How to control and manage infestations
- \* Impacts of Chilean Needle Grass

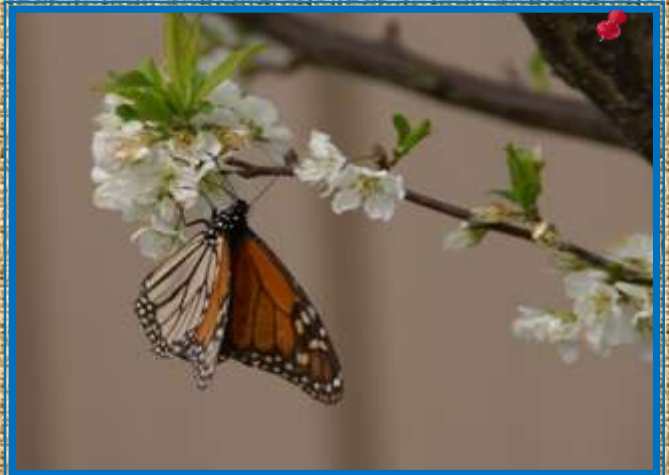
**OTHER:-**

- \* Morning tea provided
- \* A short 200m walk to the infested site
- \* Wear appropriate footwear
- \* Please leave dogs at home



Pictured above is the dreaded Chilean Needle Grass. If you have noticed this growing on your land please come along and learn how to eradicate it.

This photo is part of a series of photos of a butterfly on our plum tree in the back garden. The photos were taken last weekend by my husband. Spring is definitely with us! Compiler Bev



A reminder to all residents that the Playford Council's Mobile Library Service now comes to One Tree Hill on a Friday afternoon, once a fortnight. The van parks outside of the Institute opposite the shops from 3.00pm - 4.00pm. Visiting dates for this month are the 5th and 19th October



OTH Senior Citizens meet every Tuesday at the Institute from 1.00pm until 4.00pm. Come and enjoy the camaraderie along with indoor bowls, cards, afternoon tea as well as trips and dinners at various times. Any age are welcome.

Contact Martin on 8254 9248 or Gordon on 8255 2383 for more information or just turn up for a look.

Next Country Market  
Saturday 6th October (9am-1pm Approximately) at the One Tree Hill Institute Black Top Road. Great variety of hand made items plus lots of food items.

Playgroup at the Institute  
Vacancies are available for babies to school age children at the OTH Institute.

Monday Ph: 0448 354 990

Wednesday Ph: 8284 4555



PROGRESS General Meeting - Thursday 11th October at 7.30pm.

Venue: One Tree Hill Institute, Black Top Road, One Tree Hill. New members are very welcome.