

# One Tree Hill GRAPPEVINE

April 2026

## LEST WE FORGET

COMMEMORATE  
ANZAC DAY  
WITH US AT THE  
ONE TREE HILL HALL

PADDOCK TO SEA  
SCHOOL VISITS COORONG P.4

A PUB WITH HISTORY  
THE BLACKSMITHS INN P.10

CFS PARTY!  
YOU'RE INVITED TO JOIN P.11



ONE TREE HILL PROGRESS ASSOCIATION

*Community Magazine*

Volume 49  
Edition 3

# April 2026



SUN	MON	TUE	WED	THU	FRI	SAT
29	30 Week 10	31	1  PLAYGROUP	2	3 GOOD FRIDAY	4  MARKET DAY
5  EASTER SUNDAY	6 EASTER MONDAY Week 11	7	8	9  PROGRESS MEETING	10	11
12	13 School Holidays	14	15	16	17	18
19	20 School Holidays	21	22	23	24  MOBILE LIBRARY	25  ANZAC Day
26	27 Term 2 Week 1	28	29	30	1	2

Bin Day key: ● = General Household Waste ● = Food Organics and Garden Organics ● = Household Recycling  
Public Holidays will create collection delays



**One Tree Hill Playgroup**  
Wednesdays 9:00am - 11:00am  
(during term)  
Krysia: 0419 863 077



**The Walkie Talkies**  
Mon, Wed, Fri, Sun 8:00am  
Helen: 08 8280 7035

*One Tree Hill Progress Association  
invites you to join us for the 2026*

## ANZAC DAY DAWN SERVICE

SATURDAY 25 APRIL  
ONE TREE HILL INSTITUTE  
SERVICE STARTS AT 5:55AM



**Mobile Library**  
Opposite Blacksmith's Inn  
Black Top Road, One Tree Hill

Alternate Fridays  
3:00pm - 4:00pm  
Contact: 08 8256 0333



# PRESIDENT'S *Report*



It is with great pleasure that I introduce an exciting new chapter for our Grapevine publication. The Grapevine has long been a valued voice within our community, and its continued success relies on fresh ideas, energy, and leadership.

I am delighted to announce the appointment of Beth Scott as our new Grapevine Editor. Her enthusiasm, creativity, and commitment to excellence will help guide the publication into the future. With a strong vision for engaging content and a passion for highlighting the voices within our community, Beth is well placed to build on the strong foundations already established.

We extend our sincere thanks to Kelly Fischer for her dedication and hard work as Grapevine Editor. We are truly grateful for the time and effort she has invested over the years.

If you would like to be apart of this exciting new chapter you are welcome to join us at the One Tree Hill Progress Association Inc. **Annual General Meeting at 7:30pm on Thursday 14th May 2026 at the One Tree Hill Institute.**

**Finally, our ANZAC Day preparations are well underway. If you are interested in volunteering to help set up the hall, we will be there on Friday 24th April from 2pm.** Alternatively, if you would like to contribute by baking some ANZAC biscuits to share after the service, please get in touch. If you require reserved seating or any other assistance on the day, please don't hesitate to reach out.

As always you can also reach out to us via email, website or coming along to one of our monthly meetings. Meetings are held at 7:30pm on the second Thursday of the month, you are welcome to come at 7pm for a coffee and chat before the meeting.

**Tabatha Pettigrew**  
President One Tree Hill Progress Association Inc.  
[president@onetreehill.org.au](mailto:president@onetreehill.org.au)

# EDITOR'S *Note*

Thank you to Kelly for handing over such a thoughtful and engaging magazine. The regular contributors bring me so much joy - it's a pleasure to read each of your articles.

It has also been wonderful to work closely with Louise Niva, who has dedicated the past three years to editing this publication. As two former public relations gals, we're excited to continue connecting with our community and uncovering the gold within your stories.

A moment for the cover. ANZAC Day is deeply meaningful to many of us, as we come together to honour and remember the Veterans of WWI, WWII, and our Vietnam Veterans.

This cover image pays homage to Defence personnel who have deployed to the Middle East following 9/11. The effects of these more recent conflicts are still felt today within our local community and far beyond.

Enjoy this edition!  
Beth Scott



*On the cover: Local veteran shares deployment image from the back of a Chinook, Afghanistan, 2013.*

Have something to add share with our community?  
email us at:  
[grapevine@onetreehill.org.au](mailto:grapevine@onetreehill.org.au)

**Read the Grapevine online!**

**Gold coin donations are welcome at the shops on the main street and OTH Market to support our local magazine.**

[WWW.ONETREEHILL.ORG.AU/INDEX.PHP/GRAPEVINE](http://WWW.ONETREEHILL.ORG.AU/INDEX.PHP/GRAPEVINE)



Disclaimer  
The views and opinions expressed in the One Tree Hill Grapevine are those of the individual contributors and do not necessarily reflect the views of the One Tree Hill Progress Association. While every effort is made to ensure the information published is accurate at the time of printing, the One Tree Hill Progress Association accepts no responsibility for errors, omissions, or any consequences arising from reliance on the information contained within this publication. Readers are encouraged to independently verify details such as dates, times, event information and public notices. Advertising in this publication does not constitute endorsement by the One Tree Hill Progress Association.

# FROM THE PADDOCKS TO

*The sea*

## ONE TREE HILL PRIMARY SCHOOL STUDENTS EXPLORE THE COORONG

Students in Years 5 and 6 at One Tree Hill Primary School recently set off on a long bus trip to experience the Coorong, one of South Australia's most remarkable natural environments. The excursion was encouraged by science teacher, Mr Stephen Clarke, who wanted students to experience firsthand one of our state's most impressive ecosystems.

**Home to more varieties of bird life than almost anywhere else in Australia, the Coorong is rich in biodiversity and an important habitat for both resident and migratory species. In fact, it is a wetland of international importance.**

After a two-hour bus ride, the students arrived at the wharf where they boarded the boat *Spirit of the Coorong* and were greeted by fresh sea air on a beautiful hot summer day. Pelicans posed and seals lazed nearby whilst the tour guide shared facts about the plants that survive in this unique coastal environment. Students learnt about the white currant plant whose seeds rely on passing through an emu's digestive system in order to germinate.

Another interesting and useful plant is pigface, *Carpobrotus rossii*, a coastal succulent with properties similar to aloe vera. Pigface has natural antimicrobial qualities and has traditionally been used to soothe and cool the skin after sunburn. The Indigenous name for this plant is Karkalla.



One of the highlights of the trip was visiting the longest continuous stretch of beach in Australia — approximately 194 kilometres long, Coorong Beach stretches from the Murray Mouth all the way to Cape Jaffa. Here, the students undertook their own natural inquiry on the sand. Cuttlefish bones, colourful cockle shells, and roots of dried out seagrass kept the students entertained before learning that the dried balls of seagrass were traditionally used by Indigenous people as natural fire starters – a great tip for beach camping!

The school group was lucky to watch an emu cooling off in the water, sitting down to splash itself whilst drinking. The guide explained that emus are able to skim the thin layer of fresh water that sits above the heavier salt water, allowing them to hydrate even in this coastal environment. The other bird life of the Coorong did not disappoint, with students sighting Cape Barren geese, teal ducks, Caspian terns, ibis, sooty oystercatchers with their distinctive red legs, and Pacific gulls, where the large brown ones were identified as juveniles even though their impressive wingspan did not seem like youngsters!

For many students, seeing the vastness of the Coorong and its wildlife firsthand was a powerful experience, but Anna, Year 5, said, “My favourite part was sitting on top of the boat and looking out for dolphins and seals.”

Mr Clarke said the trip was about more than just science, it’s about ownership. “If today’s students are the future guardians of our planet, then understanding its diversity, its beauty and its fragility will enable them to see ecosystems as more than sight-seeing. Their future role – and responsibility – in protecting the plants, animals, parks and water systems is learnt and embraced at an early age.”



# SAPOL *Community Safety Update*



**SOUTH AUSTRALIA POLICE**  
SAFER COMMUNITIES

Offences reported between 11/2/26 and 13/3/26

**Between 18 and 23 February - Humbug Scrub Road, YATTALUNGA**

Theft of Copper Cable  
Unknown persons have removed a quantity of copper cable from Telstra pit

**Between 11 and 13 February - One Tree Hill Road, GOULD CREEK**

Damage to Motor Vehicle  
Extensive damage to vehicle parked on property

**28 February - McGilp Road, ONE TREE HILL**

Non Residential Serious Criminal Trespass  
Entry gained to Kindy – electrical items stolen



*Police continue to respond to several serious motor vehicle accidents (including roll overs) in the One Tree Hill area over the last month. Please ensure you drive to the road/weather conditions and keep safe!*

*As always if you have any information to assist with any crime issues in the area please call Police Communications on 131 444 or the undersigned.*

**Darren McCue**  
**Senior Sergeant First Class**  
**Elizabeth Police Station**



# One Tree Hill Country Market



- Homemade preserves
  - Hand-crafted pottery & jewellery
  - Artisan bags & textiles
  - Locally made wine
  - Native plants and succulents
- And plenty more to discover!

8:30 AM - 12:30 PM

Every first Saturday of the month

One Tree Hill Institute,  
Black Top Road



follow us!



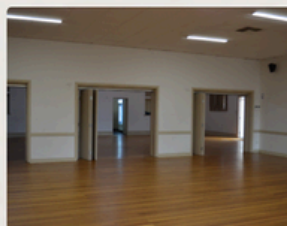
Contact Heather for more:  
[market@onetreehill.org.au](mailto:market@onetreehill.org.au)  
0457 107 817



## ONE TREE HILL *Institute*

Host unforgettable events in our stylish, flexible venue - perfect for weddings, parties, and meetings.

- ✓ Capacity for up to 200 guests
- ✓ Commercial Kitchen - Ideal for catering.
- ✓ Versatile Space - Air conditioning, heating & natural lighting
- ✓ Wooden dance floor - Perfect for celebration & special events
- ✓ Tables & chairs provided



### Contact Us

Phone 0459 105 045

Email [hall@onetreehill.org.au](mailto:hall@onetreehill.org.au)

Website [www.onetreehill.org.au/hall](http://www.onetreehill.org.au/hall)

# ANZAC DAY

# Dawn Service

The One Tree Hill Progress Association is proud to coordinate the annual ANZAC Day Dawn Service at the One Tree Hill Institute.

Following the service, you are warmly invited to stay and connect with the community over a traditional gunfire breakfast and historical display at the Institute. Local businesses will be open - why not show your support by enjoying a coffee from the One Tree Hill General Store or booking a table for breakfast at the Blacksmith Inn or Gold Dust Café.



There's something truly special about the humble ANZAC biscuit —simple in its ingredients, yet rich in history and meaning.

Made from oats, golden syrup, coconut, and butter, these biscuits have been a cherished part of Australian and New Zealand kitchens for generations.

Originally baked and sent to soldiers during wartime for their long shelf life, ANZAC biscuits have become a lasting symbol of remembrance, resilience, and care.

Whether you prefer them chewy or crisp, each batch represents a moment to pause, reflect, and honour the sacrifice of our service men and women.

This year, we invite you to get involved by baking ANZAC biscuits to share as part of the Dawn Service refreshments. If baking isn't your thing, we're also looking for volunteers to help set up the hall and displays on Friday afternoon.

If you would like to contribute, please contact Tabatha on 0433118689 or via email [president@onetreehill.org.au](mailto:president@onetreehill.org.au)

## ANZAC DAY DAWN SERVICE

SATURDAY 25 APRIL

ONE TREE HILL INSTITUTE

SERVICE STARTS AT 5:55AM



### REQUESTING VOLUNTEER SUPPORT FOR ANZAC DAY:

- BAKING OF ANZAC BISCUITS TO SHARE ON THE DAY
- SETTING UP THE ONE TREE HILL HALL FROM 2:30PM, 24<sup>TH</sup> APRIL



# OTH CFS



## Incident Report

The OTH CFS Brigade, after such a busy previous month, has experienced a welcomed but apprehensive quieter period. Our volunteers relished the opportunity to recharge and get in some additional training to bolster Brigade skillsets.

The OTH Brigade responded to 5 incidents across the past month, including, one grassfire, one tree down, one vehicle fire, one structure fire, and one Para Base being stood up.

- 20<sup>th</sup> February – **Para Base stood up** to support a 2<sup>nd</sup> Alarm Grass fire in Para Groups’ response area.
- 20<sup>th</sup> February – **Grass fire** on the corner of Stebonheath and Dalkeith Rd at Kudla. OTH 34 and Para BW10 were responded with trucks from Dalkeith, Virginia, Para Reserves, Tea Tree Gully CFS and Salisbury MFS in attendance.
- 20<sup>th</sup> February – **Structure fire** on Whites Rd, Salisbury North. Unfortunately, OTH34P was unable to attend due to the unavailability of Breathing Apparatus trained firefighters.
- 28<sup>th</sup> February – **Tree down** on One Tree Hill Rd at Gould Creek. A large tree had come down blocking half the road. Crews quickly set up traffic control while other firefighters commenced chainsaw duties. **Crews were generously assisted by a local resident with a tractor** to remove a larger section of the tree to clear and re-open the road in trying conditions.
- 4<sup>th</sup> March – **Vehicle fire** on the Northern Expressway at Bolivar. Para BW10 responded to a large truck fire. Multiple CFS and MFS trucks were responded with BW10 supplying water and Compressed Air Foam.



**Do you have this app?**

Download Alert SA to stay informed about fires, severe weather, floods, hazardous materials, total fire bans and heatwaves.

## Brigade Activities

The Brigade welcomed four new members whose applications had been processed following on from the Information evening in February. We look forward to seeing them at training and getting to know them better.

The welcomed inclusion of these new members increases the Brigades membership. **An increased Brigade membership means better volunteer coverage.** As can be seen in our incident report, during weekdays if we have multiple jobs, our ability to crew trucks can be stretched, especially if specifically trained firefighters are required for a particular job. That said, it is extremely rare for the OTH CFS Brigade to default on a call out. We strive to serve and protect our community on every callout.

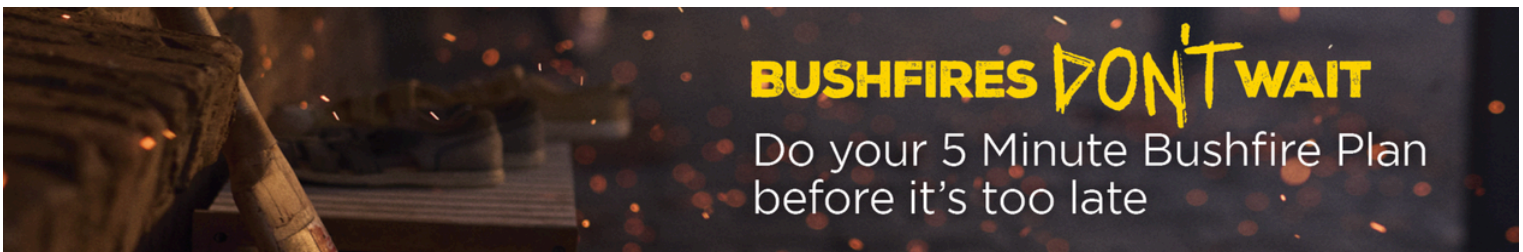
**The OTH CFS Brigade conducted two visits to the OTH Kindy** on Tuesday the 10<sup>th</sup> and Friday the 13<sup>th</sup> of March. The children had plenty of questions and learned all about the OTH CFS Brigade. The firefighters set up a hose and bowling pins for the kids to squirt and knock over. They also climbed into the cabin and watched a demonstration of the lights, sirens and Halo fire suppression system fitted to the trucks. **Thank you to the One Tree Hill Kindy groups for having us visit.**

**The Fire Danger Season is still upon us**, fuel loads in the area remain high and the threat of a bushfire remains, so please continue to be vigilant and thoughtful within our community. It is very pleasing to see a reduction in vehicle accidents this past month.

As always stay safe, review your Bushfire Ready plan with your family and loved ones, and remember,

## Bushfires DON'T WAIT!

[www.cfs.sa.gov.au/plan-prepare/bushfire-ready](http://www.cfs.sa.gov.au/plan-prepare/bushfire-ready)



# OTH SCOUTS

## Clean Up

AUSTRALIA DAY



Scouts  
SA

One Tree Hill Cubs and Joeys had another successful Clean Up Australia Day at their usual spot, Brian Coward Reserve on Uley Road. This is the 19<sup>th</sup> year that members of One Tree Hill Scout Group have tackled the rubbish here, and the usual detritus of fast food packaging, cans and plastic was duly cleared. This year's more unusual finds included 4 shopping trolleys, a tyre and part of a discarded air conditioning unit, while two broken park benches were also reported to Playford Council for repair while we were at it!



Further afield, the Cubs have also been hiking at the Kurna Wetlands and Para Wirra this month while the Joeys went fishing at Wynn Vale Dam and caught 2 catfish and 2 carp! The Cubs also had a sleepover where they learned how to put up and pack down tents and cook on the barbecue, and a highlight was testing out their paper aeroplane designs. Meanwhile the Scouts have been orienteering around One Tree Hill, practising their code breaking skills, and learning first aid and bushfire readiness during their 'emergencies night'.

If you are looking for fun, friendships, adventure and challenge, then One Tree Hill Scout Group is for you! There is a no obligation free trial of three free sessions, and Scouts SA also accepts the government Sports Vouchers.

If you are interested in finding out more, please contact the group leader, Matt Guelen, on 0402 369 035 or [gl.onetreehill@sa.scouts.com.au](mailto:gl.onetreehill@sa.scouts.com.au) to enquire about vacancies in Joeys (ages 5-8), Cubs (ages 8-11), Scouts (ages 11-15) or Venturers (ages 15-18).



Follow the QR code for more details:



**JOEY**  
SCOUTS  
DISCOVER ADVENTURE

Ages 5 - 8



**CUB**  
SCOUTS  
CREATE THE PATH

Ages 8 - 11



**SCOUTS**  
EXPLORE THE UNKNOWN

Ages 11 - 15



**VENTURER**  
SCOUTS  
LOOK WIDE

Ages 15 - 17



**ROVER**  
SCOUTS  
BEYOND THE HORIZON

Ages 18 - 25

# FORGED *in time*

## THE BLACKSMITHS INN - A LINK TO HISTORY

As May approaches and we turn our minds to History Month, let's pause and reflect on the stories that have built the foundations of One Tree Hill. Long before our township became the close-knit community we know today, life centred around the original One Tree Hill Inn originally situated some distance from where the township would later grow. By 1858, the heart of the community had begun to take shape, with a general store and post office serving a small but determined population.

The Blacksmith's Inn was once home and workplace of local man Andrew Shillabeer. He was the local blacksmith, making the name of our local pub very special. Shillabeer was a strong part of an early South Australian story of migration and resilience. Arriving in 1840 aboard the Royal Admiral with his family, he eventually settled in One Tree Hill.

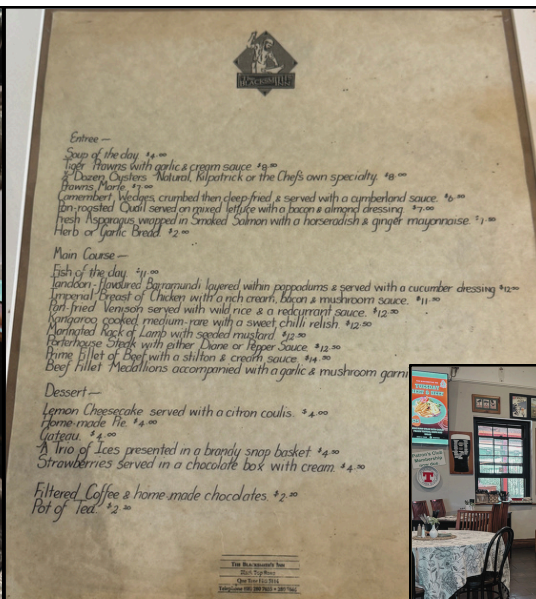
As we also approach ANZAC Day, the Shillabeer name carries a deeper weight of remembrance. Andrew's son, Andrew William Shillabeer, was born in One Tree Hill in 1897 and enlisted in the Australian Imperial Force at just 19 years of age. A local labourer, he trained in Adelaide before departing for England aboard the Afric in late 1916. After illness during training, he recovered but was then deployed to the Western Front in France where on 8 October 1917, he was killed in action.

As we celebrate our history in more ways than one, we can remember these stories of families building a town, the young men who left and never returned and the historical landmarks that form the threads of One Tree Hill's identity.

The Blacksmiths Inn was born around 1989 where it was converted from an old cottage by Fred Churcher. The house wine would be produced on the property itself and sold as 'Broadlands Estate' – a homage to the name of the land it once had. At the Blacksmiths Inn, history isn't just remembered - it's still very much alive. Local resident, Keith remembers enjoying the pub in the early 1990s and has a fond memory of musician Nicky Ross who would play the piano, sing, drink pints and smoke a cigarette all at the same time!

Wendy and husband Joel have owned the pub for the last three and a half years, proud of the local gem everyone loves. With the exclusive Patrons Club of 120 members, live music on a Sunday afternoon, regular open mic nights and special events celebrated, our local has become something for us all to be proud of. Wendy shares with us her own special connection to our much beloved pub. "It feels like home to us and to many. It's a place for everyday people where they feel comfy and welcome."

DO YOU HAVE PHOTOS OF THE BLACKSMITHS OVER THE YEARS?  
SEND THEM IN! GRAPEVINE@ONETREEHILL.ORG.AU



Above: An original, hand written menu.  
Right: Memorabilia throughout the years hangs proud in the front bar.

THE BLACKSMITHS INN WILL HAVE A BREAKFAST MENU ON ANZAC DAY MORNING.

COME DOWN AND HAVE A PINT IN HONOUR OF OUR VETERANS!



FOLLOW THE BLACKSMITH'S INN ON FACEBOOK



**YOU'RE INVITED  
TO A COMMUNITY GATHERING  
TO SAY**

# **THANK YOU OTH CFS**

**FOR THEIR SELFLESS TIME AND  
DEDICATION IN PROTECTING  
OUR COMMUNITY**

**12PM - 3PM  
SATURDAY  
9<sup>TH</sup> MAY**

**OTH CFS STATION**

**PLEASE BRING A PLATE  
OF FINGER FOOD &  
DRINK TO SHARE.**

**ALL WELCOME!**

# BIRDS IN MY *backyard*

by Julie Buttery

Humbug Scrub

## LITTLE CORELLAS



RAUCOUS SQUAWKING, DAMAGE TO TREES, CABLES, ANYTHING RUBBER. PEST IN FARMLANDS WHEN THEY DESCEND IN THEIR THOUSANDS ON NEWLY PLANTED GRAIN CROPS. THIS IS HOW MANY PEOPLE THINK OF CORELLAS.

But they are a native of Australia, covering most of the country except the very dry areas along the WA/SA border. They have adapted to our land usage and make the most of it.

You will only find Corellas where there is free-standing water and trees. Sometimes they roost in such large numbers that the tree looks as if it is covered in white blossom.

*Cacatua sanguinea* is a close relative of the larger Sulphur-crested cockatoo and is sometimes mistaken for them. It more closely resembles *C tenuirostris*, the Long-billed Corella and can most easily be distinguished by the red throat of the Long-billed. **Also known as the "Cut-throat"** as it may look as if it's throat has been cut, the Long-billed lives in this area, and I have frequently seen it in Elizabeth. The two species are often seen on the ground together some with red throats, others without. Now you know!

The Little Corella weighs between 350 and 600 grams, with a wing of about 300mm. This is very close to the same as the Long-billed.

The crest of the Little Corella does not extend past the back of its head (unlike the Sulphur). It has some pink around the bill, in front of the eyes and a hint of sulphur yellow under the wings. There is an eye patch of blue-grey, extending under the eye.

They feed on bulbs and corms, and grains, occasionally digging for them but preferring to scuff through the grass.

**Little Corellas live for a very long time. One living in Humbug Scrub Wildlife Sanctuary has been there since 1953.**

© All images taken by Julie Buttery



Top: Corellas in tree taken in Victoria (our subspecies of Corella).

Middle left: Long-billed Corella taken in Humbug Scrub Wildlife Sanctuary.

# WHAT'S FLOWERING

by Heather Fischer  
Humbug Scrub

## *in my garden*

Oh dear, the bulk of the rain that flowed into South Australia from a slow moving tropical low missed us, but the 15mils that dropped into the rain gauge was most welcomed. We will all be very happy with another few mils. Autumn has arrived and the days of 40 degrees or higher are now in the past until we embrace next year's Summer.

Do you have an indoor plant known as Mother-in-law's tongue? Some people call it by the botanical name of Sansevieria. Others refer to it a Snake plant.

**HAS YOUR PLANT EVER FLOWERED? MINE HAS. WOW! FLOWER SPIKES THAT APPEAR ARE CONSIDERED A RARITY AS THIS PLANT SELDOM FLOWERS.**

**This is the first time I have ever seen a flower spike on a Mother-in-law's tongue plant.** Delicate lily shaped whitish cream flowers are opening along a narrow-rounded stem and have a slight perfume but feel quite sticky when touched.

The leaves of this indoor plant are of a stiff upright nature and come in various shades of green often with cream mottled blotches. Sometimes the edge of the leaves are yellow. This plant is native to the tropical areas of Africa, Madagascar and Asia and should not be grown outdoors . As a much loved indoor plant, this plant needs to be grown in a mix of well draining potting mix and loamy soil.

Water this plant sparingly but only when the soil has dried out. A surface cover of pebbles not only is attractive to the eye but help retain moisture. The Snake plant is tough, low maintenance and will need the dust removed from time to time. **Being an indoor plant, it needs to be placed where it will receive bright but indirect sunlight and away from any cold draughts.**

Dr Google suggests that the leaves and any flower spikes will reach a height of 1m but I am extremely happy with my 40cm high flower stem. Mother-in-law's tongue can be propagated by cuttings and is readily available from all good nurseries as well as market stalls. **Buy one or find one, nurture it and wait and watch and dream of the day that your well-loved Mother-in-law's tongue sends up a stem of beautiful dainty flowers.**

It is so exciting to see flowers on a plant that rarely flowers.

*Just beautifull!*



*Above: Heather's Mother-in-law's tongue in flower!*

# ULEYBURY NATIVE WILDLIFE SANCTUARY

by Liane and Brent

## THE HIDDEN HOMES OF *Our Wildlife*

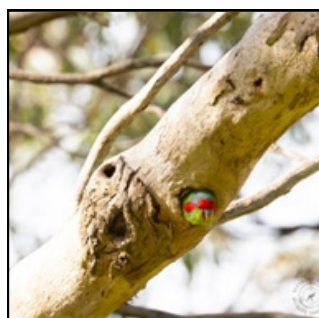
When we think of Australian wildlife, we often picture animals out in the open — kangaroos in paddocks, birds in the treetops, or possums moving through the branches at night. But some of the most important parts of wildlife survival are often the least noticed: tree hollows, dense ground cover, and nests hidden low in the landscape.

Tree hollows are essential habitat for many native species. These natural shelters take decades, and sometimes more than a century, to form in older trees. Once they do, they become safe homes for a remarkable variety of wildlife. Parrots, cockatoos, rosellas, owls, kookaburras, possums, bats and gliders all rely on hollows for protection from weather, predators, and to raise their young.

Closer to the ground, many native birds build nests among grasses, shrubs, reeds, and leaf litter. These nests are often carefully hidden, offering safety for eggs and chicks. Species such as plovers, quail, ducks, and many smaller bush birds depend on healthy ground cover to breed successfully.

This lower layer of habitat is just as important for mammals. Long-Nosed Potoroos, Brush-Tailed Bettongs, Southern Brown Bandicoots, Fat-Tailed Dunnarts and even Wallabies and other small ground-dwelling native mammals use dense understory, fallen logs, branches, and leaf litter for shelter, nesting, and protection as they move through the environment. These features help them forage safely and avoid predators.

UNFORTUNATELY, THESE NATURAL HOMES ARE BECOMING HARDER TO FIND. THE LOSS OF OLD TREES, CLEARING OF VEGETATION, AND PRESSURE FROM INTRODUCED PREDATORS SUCH AS CATS AND FOXES ALL PLACE ENORMOUS STRAIN ON NATIVE WILDLIFE. A HOLLOW-BEARING TREE REMOVED TODAY MAY TAKE GENERATIONS TO REPLACE.



Protecting tree hollows and healthy ground habitat is one of the most meaningful ways we can support biodiversity. Every mature tree left standing and every patch of natural cover preserved helps provide a future for the wildlife that depends on it.

At Uleybury Native Wildlife Sanctuary, these natural behaviours and habitats are an important reminder that conservation is not just about protecting individual animals — it is about protecting the ecosystems that allow them to live as naturally as possible. By creating and maintaining environments with shelter, cover, and habitat complexity, we help support the instincts, safety, and wellbeing of the species in our care, while also highlighting just how vital these hidden homes are in the wild..

© All images taken by Uleybury Native Wildlife Sanctuary

# KOALA RESCUE

## Red Coloured



# KOALA RESCUE

0474 RESCUE [0474 737 283]

### URINE FROM A KOALA

by Bronwyn Wilton

This urine was tested with a multi-stick and came back negative for blood, therefore, no blood in the urine but the red colouring was **due to the Koala eating *Eucalyptus Globulus* (Blue Gum) leaves, which due to the pigments in the leaf causes the Koala's urine to go light pink – red.**

The pigmentation does no harm to the Koala, but always gives the Koala Carer a fright if not knowing that the *Eucalyptus Globus* or a subspecies of *Eucalyptus Globus* has been consumed by the Koala and this is a side effect of eating the eucalyptus. It is like one eating fresh beetroot which will make most human's urine go red, due to the betanin: red pigment found in beets.



**Koala Rescue is a 100% volunteer run, local not-for-profit charity**

100% of donations go to koala rescue, care and conservation. We rely on your generosity to continue our important work.

Find out more here →



# OTH UNITING CHURCH



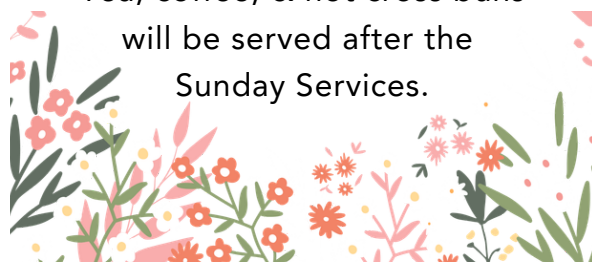
**SUNDAY MORNING SERVICE**  
10:00am

**RED BIRD OP SHOP**  
**Opening hours:**  
9:30am - 4pm,  
Monday - Friday.  
**Address:**  
4 Hilcott Street,  
Rosewood Village,  
Elizabeth North.

**JAM**  
**(Jesus and Me)**  
The children's church program (JAM) runs every Sunday at 10:00am, taking place alongside the main Service.  
  
School-aged children are always welcome to join us each week as we gather at 10:00am throughout the term.

**EASTER SERVICES**  
**April 2<sup>nd</sup> 7:00pm**  
**Maundy Thursday Service**  
**April 5<sup>th</sup> 10:00am**  
**Easter Sunday Service**

Tea, coffee, & hot cross buns will be served after the Sunday Services.



The church is available for:  
**WEDDINGS, BAPTISMS & FUNERALS**  
  
If you would like further information, please leave a message on the Church phone – 8280 7951 and someone will return your call.



# OTH CRICKET CLUB

## Final Geason Update



**Celebrating our juniors!**  
**OTHCC Junior Award Winners:**

**U12s**

Batting: H Friel  
Bowling: Z Liebelt  
Fielding: M Fordham  
Coaches: M Fordham

**U10s Green**

Batting: Z Schultz  
Bowling: Z Schultz  
Fielding: A Zubrinich  
Coaches: I Start

**U10s Gold**

Batting: W Schultz  
Bowling: L Prouse  
Fielding: W Schultz  
Coaches: P Grogan

### OTHCC B GRADE WIN GRAND FINAL!

Huge win and huge congratulations to the B Grade winning their LO7 Grand Final, won at home at McGilp Oval on Saturday 21 March. One Tree Hill 6 for 169 (Peter Stewart 69, Jamie Trainor 33\*) defeated Athelstone 69 all out (Carl Moorehead 4 for 19, Michael Friel 3 for 20).



Follow our Facebook page (One Tree Hill Cricket Club),  
Contact: Luke Lister 0406 788 425

[OTHCC is located at McGilp Reserve, One Tree Hill]



Images: B Grade celebrate Grand Final win. President Luke Lister shares congratulations and thanks.

Date	Match	Result
20 February 2026	OTH U10 Gold 9/166 (W Shultz 40) v Central United U10 5/118 (Prouse 2/9)	OTH won by 48 runs
	OTH U10 Green 4/153 (Z Shultz 32) v Virginia U10 Gold 10/93 (M Miller 2/10)	OTH won by 60 runs
	OTH U12 6/105 (H Friel 25) v Craigmore U12 Navy 5/87 (Roberts 2/15)	OTH won by 18 runs
	Adelaide Union 98 (Jacobs 3/18) v OTH A 2/101 (Stutley 40*)	OTH won by 8 wickets
21 February 2026	Craigmore D v OTH B	OTH won by forfeit
	Virginia D 119 (J Ryall 5/30) v OTH C 1/123 (B Ryall 92*)	OTH won by 9 wickets
	Craigmore U10 Navy 8/133 (Pettigrew 4/10) v OTH U10 Gold 12/96 (W Shultz 20)	Craigmore won by 37 runs
27 February 2026	Angle Vale U10 5/134 (Start 2/15) v OTH U10 Green 7/173 (F Miller 33)	OTH won by 39 runs
	Central United v OTH A	Match Abandoned
	OTH B v Two Wells B	Match Abandoned
28 February 2026	OTH C v Athelstone F	Match Abandoned
	Eyre Royals C 141 (Stevens 3/10) v OTH A 4/142 (Stutley 56*)	OTH won by 6 wickets
	OTH B 9/128 (Mead 27) v Para Vista B 4/91 (J Ryall 2/7)	OTH won by 37 runs
7 March 2026	Parafield Gardens F v OTH C	OTH won by forfeit
	Adelaide Warriors B 136 (Jacobs 3/17) v OTH A 133 (Stutley 50)	Adelaide Warriors won by 3 runs
	ATCO D 9/104 (Mead 3/7) v OTH B 4/106 (Trainor 60*)	OTH won by 6 wickets
	Enfield D 3/223 (J Ryall 1/28) v OTH C 58 (B Ryall 10)	Enfield won by 165 runs
14 March 2026 SEMI FINAL	OTH B 6/169 (Stewart 61) v Athelstone E 69 (Moorehead 4/19)	OTH won by 100 runs
	OTH B 6/169 (Stewart 61) v Athelstone E 69 (Moorehead 4/19)	OTH won by 100 runs
21 March 2026 GRAND FINAL	OTH B 6/169 (Stewart 61) v Athelstone E 69 (Moorehead 4/19)	OTH won by 100 runs





## ONE TREE HILL PRESCHOOL

One Tree Hill Preschool is a dynamic and nurturing environment that champions children's natural curiosity, creativity, and autonomy. The preschool's philosophy centres around learning through play, with thoughtfully designed spaces indoors and outdoors that invite children to explore, grow, and connect with the world around them.

- ✓ Para Wirra Bush Kindy Program
- ✓ Play Group
- ✓ Strong Partnership with OTH Primary School and Community

**Contact us:** Phone: (08) 8280 7027  
 Email: dl.0322.info@schools.sa.edu.au  
 Street address: One Tree Hill Primary School, McGilp Road

**REGISTER YOUR INTEREST**  
<https://othc7.sa.edu.au/preschool/>





## LEARN, GROW & PLAY TOGETHER!

Join us on Wednesdays at the One Tree Hill Preschool from 9-11am.

We have art & craft activities, sensory play, free play, shared fruit and story time together.

First session is FREE! Everyone is welcome! Ages range from 0-6 Years old.

Please see Term Calendar as it may be the week we have an offsite excursion planned (which of course you are welcome to join too).

  FOLLOW US:  
 One Tree Hill Playgroup

# ONE TREE HILL

♦ GENERAL STORE ♦



COFFEE & CAKE  
BREAD & GROCERIES  
YUMMY HOT FOOD  
FUEL & BATTERIES

**8182 5163**

## One Tree Hill Gift & Post

GIFTS  
BILLPAY  
GIFT CARDS  
POSTAL NEEDS  
DRY CLEANING



VEHICLE REGISTRATION  
LOAD & GO  
CREDIT CARDS  
BANKING  
(MOST BANKS & AGENCIES)  
WESTERN UNION

MONDAY TO FRIDAY  
9 AM – 5 PM  
SATURDAY\*  
9 AM – 12 PM



PH: **8280 0090**

FAX: **8280 0030**

SHOP 1B / 6 BLACKTOP ROAD, ONE TREE HILL, 5114



**DAVEY**  
MASTER DEALER



**ONGA**  
pump shop

Water Products for all your household needs:



Pressure Systems - Pool Products - Transfer & Septic Pumps  
We Sell, Service & Repair **CONTACT US TODAY**



U2, 1445 Main North Rd, Para Hills West, SA 5096  
Ph: (08) 8285 2344 Fx: (08) 8285 2355  
www.ncpsindustrial.com.au  
sales@ncpsindustrial.com.au  
(Opposite Bunnings Parafield)

Plumbing Maintenance  
& Renovations  
Blocked Drains  
Water Filtration



**Anthony Jones**  
Master Plumber

Mobile: 0438 200 828  
Email: apjconnect@gmail.com  
Plumbing License - pge 317201

48 Years Plumbing experience  
ensure old fashioned  
service and quality



**DOMESTIC**

**Local Electrician**  
All Electrical Work

- Sheds and Carports
- Switchboard alterations and upgrades
- Bores and Pumps
- Security Lighting
- After Hours Call Out Service
- Friendly, Reliable Service
- FREE Quotes

Call Cosi Puccini on

**0421 773 673**

Email: cosipuccini@bigpond.com  
Lic-PGE 177700  
ABN-94 535 175 644

**COMMERCIAL**

**INDUSTRIAL**



## OLYMPIC BORING PUMP SALES & SERVICE

Specialising in Design, Installation  
& Repair of Submersible Pumps  
& Domestic Pumps

Michael - 0408 847 060 / 8380 9474  
info@olympicboring.com.au



# Achieve the Right Result with Your Autumn Lifestyle Property Sale.

With buyer enquiry traditionally strong during this time of year, preparation and promotional approach are key to make the most of the autumn market.

Entering the market knowing you have a team that prepares documentation in-house, provides flexible marketing options and understands the emotional and financial elements to a sale will give you the confidence that you will be looked after with care and can make a significant difference to your outcome.

We are proud to combine local expertise and a people-first philosophy to deliver a seamless sale experience.

Feel confident this autumn, and call our experienced team on 0488 972 888 or visit [www.cepg.com.au](http://www.cepg.com.au) to start your journey with CE Property Group.



0488 972 888  
[www.cepg.com.au](http://www.cepg.com.au)



## DN ROOFING & RESTORATION

RELIABLE ROOFING PROFESSIONALS





- ✓ Re-Roofing
- ✓ Tile & Iron Roof Restorations
- ✓ Ridge Capping
- ✓ Roof Extensions
- ✓ Gutter Guard



**CALL DAN**  
**0423 575 558**  
[info@dnroofrestoration.com.au](mailto:info@dnroofrestoration.com.au)  
[dnroofrestoration.com.au](http://dnroofrestoration.com.au)  
ABN: 71 676 477 212 | Licence: BLD208420

# WOMBAT'S

## Asphalt, Spray Seal & Civil

CONTACT: 0417 456 656

**View our work on Facebook**



# MOWERS PLUS

## SALISBURY

91 Frost Road  
Salisbury

08 8250 5666

**OPEN**  
Mon - Fri:  
8am - 5pm  
Sat:  
9am - 1:30pm

**PRO POWER  
FOR THE  
HOME**

~~\$569~~  
NOW **\$499\***  
SAVE \$70



SH 86 C-E  
PETROL VACUUM SHREDDER

**BG 56  
PETROL  
BLOWER**

**\$379**



**PERFORMANCE  
IN THE BAG**

SHA 56  
BATTERY  
VACUUM SHREDDER



~~\$349~~  
SKIN  
NOW **\$299\***  
SAVE \$50

ALSO STOCKISTS OF

[www.mowers-plus.com.au](http://www.mowers-plus.com.au)

[sales@mowersplussalisbury.com.au](mailto:sales@mowersplussalisbury.com.au)

**Lambretta**



**KYMCO**

3284  
Main North Road  
Evanston South

08 8522 7700



**OPEN**  
Mon - Fri:  
8:30 - 5:30  
Sat:  
8:30 - 1:00

**400**

**\$8,790\***

PROMOTIONAL RIDE AWAY

\$206 per month  
11.52% P.A. COMPARISON RATE  
OVER 60 MONTHS TERM

**QUAD  
BIKE**  
COMPLIANT  
SAFETY  
STANDARD



mates  
rates

**500SR**  
VOOM

**\$10,490\***

PROMOTIONAL RIDE AWAY

\$243 per month  
11.52% P.A. COMPARISON RATE  
OVER 60 MONTHS TERM

AUTUMN  
ESCAPE **SALE**



**600**

**\$13,990\***

PROMOTIONAL RIDE AWAY

\$319 per month  
11.52% P.A. COMPARISON RATE  
OVER 60 MONTHS TERM

mates  
rates





# RURAL AND RESIDENTIAL FENCING SERVICES

From Backyards to Paddocks  
We've Got You Covered.

✓ Fast & Reliable

✓ Affordable Pricing

✓ BLD 331018



85231079



chad@jmsrural.com.au



Willaston, SA



JMSrural.com.au



# OLYMPIC BORING DRILLING WATER WELLS

## Irrigation, Stock & Domestic Bores

Michael - 0408 847 060 / 8380 9474  
info@olympicboring.com.au

## HAYWOOD & CO CONSTRUCTION



SPECIALISING IN:  
RENOVATIONS & EXTENSIONS  
BATH ROOM UPGRADES  
PERGOLAS & SHEDS  
DECKS  
ROOF & GUTTER REPAIRS  
ALL BUILDING WORKS



CALL FOR A QUOTE.



0438358406



info@haywoodcarpentry.com



@haywoodandco

HAYWOODANDCO.COM.AU

# ESJ INSTALLATIONS

## ONE TREE HILL

### Looking for roller shutters or café blinds?

A1 Quality Workmanship & Materials  
Repairs and Conversions on  
Existing Shutters

Now also installing outdoor café blinds

Contact OTH local Earl today

### We will not be beaten on price!



Roller shutters are perfect for security, insulation, climate control, protection against nature and reducing your energy costs significantly.

# 0409 426 255



www.esjinstallations.websyte.com.au

## JUST WRECKING TOYOTAS



Huge range of 4WD, Car & Commercial Vehicle parts on offer



Auto Part Recycling Specialists

Call 8359 44 99

IMPORTING DIRECT FROM JAPAN

- ✓ All Toyota Models
- ✓ 4x4 & Light Commercial
- ✓ Mechanical Repairs to All Makes
- ✓ New & Used Auto Parts
- ✓ Free Parts Location Service, Australia Wide

- ✓ 90 Day Guarantee
- ✓ Delivery Available with Metro Area
- ✓ Reconditioning of Engines & Gear Boxes
- ✓ Fit & Repair of All Parts



3 Months Warranty\*  
SA Owned & Based  
Business with over 25  
Years Experience

CALL US NOW FOR GREAT SERVICE & A FREE QUOTE

# 8359 4499

www.justwrecking.com.au

Servicing East, South, North & West Areas



OPENING HOURS

Mon - Fri 8am - 5pm  
Sat 8am - 12:30pm

150 South Terrace, Wingfield

Corner South Rd & South Tce, Next to Railway Line



## KERSBROOK HARDWARE & FODDER

1514 South Para Road, Kersbrook

Est. 1944

08 8389 3097

### Good Old Fashioned Country Service

- General Hardware & Tools
- Garden Supplies & Plants
- Plumbing & Irrigation
- Auto Accessories & Batteries
- Fencing & Building Supplies
- Pet Products Hay & Fodder
- BBQ Gas Swaps & Refills

Mon-Fri 9am-5pm, Sat-Sun 9am-1pm

# LOCAL CLASSIFIEDS

## GOLDEN GROVE DOMESTIC MAINTENANCE



### GGD Maintenance

#### Small Job Specialist

Servicing the community for 25+ years

- Flyscreen replacement doors & windows
- Doors & locks including sliding doors
- Repair built In cupboards
- Small tiling and small painting jobs
- Small gyprock wall repairs & much more

#### Free Quotes

Phone Colin Mob: 0411 581 986  
Builders Licence: RL153319

## JI SMITH EARTHWORKS PTY LTD

- Excavator/Tipper
- Earthworks
- Soil Removal
- Clean Ups
- Hole Boring
- Rock Breaking
- Trenching

**FREE QUOTES**  
**CALL JEFF 0412 397 225**

## FIREWOOD



### Sick of splitting Firewood?

I will come to your property to cut and/or split your felled/fallen or salvaged wood

\*Fully Insured

**Ph: Angus on 0412 395 017**

## HANDYMAN

### HANDYMAN TO YOUR RESCUE

- Odd Jobs
- Maintenance
- Renovations
- Fencing
- Cleanups



**TONY**  
**0408 899 688**

## HAIRDRESSER



*Malibu Blonde*

HAIR & BEAUTY  
1a 984 Blacktop Rd  
ONE TREE HILL  
Ph: 0423 941 780

## INSPIRING LANDSCAPES

- Site Prep
- Retaining Walls
- Shed Pads
- Stormwater & Drainage
- Post Holes, Trenching
- Rubbish & Scrap Removal
- Driveways, Paving & Concreting
- Livestock Burial & More...



### EARTHWORKS



**BLD288629**

**Call Rick**

**0418 829 332**



## FIREWOOD

### FIREWOOD FOR SALE

INSPECT,  
SELECT,  
PICKUP OR  
CAN  
DELIVER

**RING BRIAN**  
**0427 910 801**

## NORTHERN ADELAIDE CLASSIC CAR ASSOCIATION

For enthusiasts of historical vehicles whether it be an old holden or a 1923 Hupmobile.



All are welcome to attend our monthly meetings where you can find out about concessional registration of older vehicles or help in tracking down parts etc. Regular runs are organised to interesting places.

Meetings are held at 7:00pm on the first Wednesday of each month at  
The Blacksmiths Inn  
980 Blacktop Rd, One Tree Hill  
Nacca.com.au / naccainc@outlook.com  
Ph: 0408 807 900

### Grapevine 2026 Advertising Rates (per issue)

#### Full Colour Pictorial Ads

Full Page \$380.00  
1/2 page \$190.00  
1/4 page \$95.00  
1/8 page \$47.50

#### Classified Ads (Black & White)

Single \$20.00  
Double \$35.00

*Thank you for supporting our community magazine!*



# COMMUNITY DIRECTORY

## ONE TREE HILL PROGRESS ASSOCIATION

President	Tabatha Pettigrew	president@onetreehill.org.au
Secretary	Beth Scott	secretary@onetreehill.org.au
Treasurer	Paul Mayes	treasurer@onetreehill.org.au
Grapevine	Beth Scott	grapevine@onetreehill.org.au 0432 668 959
Hall	Alicia Oye	hall@onetreehill.org.au 0459 105 045
Market	Heather Fischer	market@onetreehill.org.au 0457 107 817

## COMMUNITY CONTACTS

General Store	ViJay Voore	08 8182 5163
Post Office	Prad	08 8280 0090
Pharmacy	Shekhar	08 8483 4721
Senior Citizens	Louise Niva	0409 315 625
Walkie Talkies	Helen Turvey	08 8280 7035
Uniting Church	Maureen Hill	08 8280 7368
Scout Group	Matt Guelen	0402 369 035 gl.onetreehill@sa.scouts.com.au

## LOCAL SPORTING CLUBS

Tennis	Garry Evans	0415 399 658
Soccer	TBD	
Cricket	Luke Lister	0406 788 425

## EDUCATION

OTH Primary School	Principal	08 8280 7027
OTH Playgroup	Kryisia	0419 863 077

## LOCAL COUNCILLORS

Tanya Smiljanic	0467 576 611
Andrew Craig (JP)	0417 016 160

## STATE MP

Rhiannon Pearce	08 8288 8218
Ashton Hurn	08 8563 3636

## FLORA/FAUNA CONTACTS

Koala Rescue	0474 737 283
Fauna Rescue	08 8289 0896
Friends of Para Wirra	friendsofparawirra@gmail.com
Para Wirra Conservation Park	08 8336 0901





# EMERGENCY NUMBERS



## 000 EMERGENCY AMBULANCE - CFS - POLICE

BUSHFIRE INFO HOTLINE	1800 362 361
POLICE ASSISTANCE	131 444
OTH CFS STATION	08 8280 7412
HOSPITAL (LYELL MCEWIN)	08 8181 9000
CFS DUTY PHONE	08 8280 7055



**City of Playford**

08 8256 0333\*

playford@playford.sa.gov.au

\*for 24 hour Emergency Council needs - stay on the line

- lost/found dogs
- burning permits
- park maintenance

*Tip:*

*When phoning with requests please remember to ask for a Customer Reference Number (CRN) for easy identification of your communication*

**Council apps to download:**



**My Playford App**



**My Local Services App**



**Our rubbish collection**

NAWMA provides each household with **two, free hard-waste services** each financial year!

To book: 8259 2100  
www.nawma.sa.gov.au



**Snap, Send, Solve**

Don't have time for a phone call? Report Council issues on this app.

From getting potholes filled to encouraging better parking, report issues affecting your part of the world to local councils, utilities and more.

www.snapsendsolve.com