

**ONE TREE HILL**

# Grapevine

**AUGUST 2019**

**VOLUME 42**

**EDITION 7**



**Community Magazine**

... I heard it through the Grapevine ...

Cover: Emi, Natasha and Jack working with Kamcheyenne Limousin Cows / Photo Credit: Kamcheyenne Limousin

# READ THE GRAPEVINE ONLINE



For the online edition of the One Tree Hill Grapevine, please visit the web site: [www.onetreehillhall.com.au](http://www.onetreehillhall.com.au)

Click on 'About Us', scroll to the bottom of the page, where you can download the edition of your choice in PDF format.

You can also now head to our facebook page and give it a "Like".



One Tree Hill Grapevine

**For submissions - Email: [oth.grapevine@bigpond.com](mailto:oth.grapevine@bigpond.com) or Mob: 0448 208 338 / 0435 269 564**

The One Tree Hill Grapevine is published by the One Tree Hill Progress Association.

The views expressed in the One Tree Hill Grapevine are not necessarily those of the One Tree Hill Progress Association. Whilst every effort has been made to ensure that information in this publication is fair and accurate, One Tree Hill Grapevine cannot be held responsible for any content or advertisement, including errors or omissions.

## DEADLINE for the Next Edition is Wednesday 21st August

*To advertise in the Grapevine you must live in One Tree Hill or the surrounding area, or operate a business that provides a unique service to the district.*

### COMMUNITY MAGAZINE

The Grapevine is a great way to share local news, views and events.

A Gold Coin Donation towards the cost of the production of the Grapevine would be greatly appreciated.

Please place your gold coin donation in the Piggy Banks at:

- ◆ The General Store
- ◆ Post Office
- ◆ Fodder Store
- ◆ Pharmacy, or
- ◆ OTH Country Market



### ADVERTISING RATES PER ISSUE

	<u>Colour</u>	<u>Black &amp; White</u>
1/8 pg	\$40	1/8 pg \$30
1/4 pg	\$80	1/4 pg \$60
1/3 pg	\$135	1/3 pg \$100
1/2 pg	\$195	1/2 pg \$140
Full pg	\$395	Full pg \$295

Classified Ads (Black & White pg 22)  
Single \$13 / Double \$25

### EMERGENCY NUMBERS

Police: 131 444  
Ambulance : 000  
Other Emergencies: 000  
Hospital: 8182 9000



Country Fire Service: 000  
Station (When Manned): 8280 7412  
Bushfire Info Hotline (24hr): 1300 362 361  
General Business: 8280 7055



To Feature : Email: [oth.grapevine@bigpond.com](mailto:oth.grapevine@bigpond.com)



## CONTENTS

From Behind the Desk...	3
OTH Progress Assoc. Report	5
OTH CFS Report	6
Out and About	8
Councillor's Report	9
Take A Break	11
Community News	13
A to Z Advertisers	23
Community Directory	23
Playford Council Contacts	23
What's On	24

## From Behind the Desk...

Welcome to the August issue of the One Tree Hill Grapevine. We've certainly been blessed with a lot of rain recently, so hopefully your tanks and dams are filling! For this month's location to guess "Where in One Tree Hill?", you will need to be familiar with a historic place outside of town. Our cover page is of our local kids getting ready to show for Kamcheyenne Limousin at the SA Junior Heifer Expo.

This issue you can read about a new book exchange idea, the local cub pack going camping, and also about the buddy bench at OTHPS. Thank you to those who have contributed photos... keep them coming!

If you have any information about local achievements, new ideas or you would like to run something by me, please be in touch.



## COUNTRY MARKET



• CRAFT • COOK • GROW • FRESH

## One Tree Hill Institute

**Saturday 3rd August 8:30am - 1pm**

***Come and support our local Community Event!***

New and regular stallholders offering a variety of goods for sale at quite reasonable market prices.

Do you need a birthday card or, perhaps, a scented candle?

Quality plants for sale. Plant now to take advantage of moist soils.

Hand spun and dyed yarns, ready to knit or crochet into a scarf, beanie, jacket or knee rug.

There's Bric-a Brac to browse and much more. Don't forget the Piroskis!

Remember, it might be cold outside but it's warm inside our Institute.

Do come along and visit our local market and enjoy a cuppa and a chat

***Stallholder Enquiries 0457 107 817***

# GARDEN MULCH

Delivered to your Home

**\$50.00 per Truck Load**

(approximately 10 cubic metres)

Contact the "Cozzies" at

Para Trees for your

Local Delivery

Jason: **0408 857 931**

Email: [admin@paratrees.com.au](mailto:admin@paratrees.com.au)



## Roger Girdham Electrical

PTY LTD A.B.N. 67 059 785 885

Mobile: **0417 853 863**

Phone: **(08) 8280 7788**

Email: [roggelec@bigpond.com](mailto:roggelec@bigpond.com)

*Service with a smile guaranteed!*

Serving the local community for 20 Years!

Proud Sponsors of the One Tree Hill Cricket Club and Tennis Club



**DAVEY**  
MASTER DEALER

**NCPS  
INDUSTRIAL**

Water Products for all your household needs:

- Pressure Pumps
- Pool Products
- Transfer Pumps
- Septic Pumps
- Purification

We Sell, Service & Repair  
**CONTACT US TODAY**



U2, 1445 Main North Rd, Para Hills West, SA 5096  
Ph: (08) 8285 2344 Fx: (08) 8285 2355  
[www.ncpsindustrial.com.au](http://www.ncpsindustrial.com.au)  
[sales@ncpsindustrial.com.au](mailto:sales@ncpsindustrial.com.au)  
(Opposite Bunnings Parafield)

## E & A Vanin

LOCAL PLUMBING SERVICES

DOMESTIC - COMMERCIAL - INDUSTRIAL

- General Plumbing Maintenance
- New Homes and Extensions
- Drains and Stormwater
- Bathroom Renovations
- Hot Water Service Changeovers

REGISTERED  
MASTER PLUMBER  
EDDY VANIN PROPRIETOR  
Ph: 0412 394 689  
or Home/Office  
**8280 7970**



## JUST WRECKING TOYOTAS

Huge range of 4WD, Car & Commercial Vehicle parts on offer



Auto Part Recycling Specialists

Call **8359 44 99**

IMPORTING DIRECT FROM JAPAN

- All Toyota Models
- 4x4 & Light Commercial
- Mechanical Repairs to All Makes
- New & Used Auto Parts
- Free Parts Location Service, Australia Wide

- 90 Day Guarantee
- Delivery Available with Metro Area
- Reconditioning of Engines & Gear Boxes
- Fit & Repair of All Parts

**3 Months Warranty\***  
SA Owned & Based  
Business with over 25  
Years Experience

CALL US NOW FOR GREAT SERVICE & A FREE QUOTE

**8359 4499**

[www.justwrecking.com.au](http://www.justwrecking.com.au)

Servicing East, South, North & West Areas

OPENING HOURS  
Mon - Fri 8am - 5pm  
Sat 8am - 12:30pm

150 South Terrace, Wingfield  
Corner South Rd & South Tce, Next to Railway Line



# One Tree Hill Progress Association ~ President's Report

Dear Residents,

Our Progress Association met on 11th July and we discussed a range of new initiatives. We will be re-hosting our Internet presence in order to reduce costs and improve our ability to communicate with the community. Our current website will be maintained, but will likely add a new site to help promote the Grapevine and Market.

A local resident's suggestions to install a Community Book Exchange was met with enthusiastic support. We are looking for a small, weatherproof cupboard that we can install in a 24/7 accessible area at or near the Institute. This will allow residents to take/donate/swap a book from the cupboard at any time, thus providing a small, local library service to those keen book readers in the town. See similar ideas at <https://streetlibrary.org.au/stories-in-the-media/>.

Disappointingly, Playford Council has decided on a 3.3% rate increase, well in excess of CPI. In all fairness, around 0.7% of the rise has been attributed to the State Government 40% increase in the solid waste levy. Progress has considerable concerns about the affordability of the rate increase. We are also disappointed that the State Government is hiking the waste levy to, for example, truck sand to West Beach and other metropolitan beaches. I would encourage ratepayers to review the 25Jun19 Playford Council Meeting Minutes (on their website) to see how your Ward 3 councillors voted in relation to the motions for 3.8%, 3.0% and then finally 3.3%.

Progress is keen to try and involve more of the community in our activities. Accordingly, we will be conducting a small "Membership Drive" at the next market on 3rd August. We appreciate that many people are unable to attend our monthly meetings, but you may like to join up (for only \$2) to receive our correspondence and occasionally help with important town events. Our next meeting is at 7:30pm on Thursday 8th August in the Institute at One Tree Hill; see you there!

Kind Regards,

*Steve Huckstepp*  
*President, One Tree Hill Progress Association*  
*oth.progress@bigpond.com*



*Morning Fog in One Tree Hill—Photo Credit: Hilltop Flowers Facebook Page*

# One Tree Hill CFS ~ Incident Report July 2019

For general information please contact OTH Duty Phone on 8280 7055.

You can also visit the CFS website at <http://www.cfs.sa.gov.au> or phone 1300 362 361.

*Garry Walsh, One Tree Hill CFS*



# One Tree Hill Rural Watch ~ Crime Report

## Offences Reported between 16th June—16th July 2019



21 June – overnight	Theft from motor vehicle	Lorna Court ONE TREE HILL	2 unlocked vehicles entered and items stolen. Electrical items and glasses
30 June – day	Unlawfully on Premises	Gawler-One Tree Hill Road YATTALUNGA	Attempt entry to premises via combination lock on front gate which had been manipulated.
5 July - overnight	Theft	Gawler-One Tree Hill Road YATTALUNGA	Open shed entered and items removed

Numerous vehicle collisions have occurred within the One Tree Hill area over the last month requiring attendance by Emergency Services. With the wet road conditions everyone is reminded to adjust your manner of driving to suit the conditions to ensure you and your passengers arrive home safely.



**SOUTH AUSTRALIA POLICE**  
KEEPING SA SAFE

As always, if you have any information to assist with any crime issues in the area please call Police Communications on 131 444.

*Darren McCue*  
Senior Sergeant First Class, ELIZABETH POLICE STATION

### One Tree Hill Gift & Post

GIFTS  
BILLPAY  
GIFT CARDS  
POSTAL NEEDS  
DRY CLEANING



VEHICLE REGISTRATION  
LOAD & GO  
CREDIT CARDS  
BANKING  
(MOST BANKS & AGENCIES)  
WESTERN UNION

MONDAY TO FRIDAY  
8 AM – 5 PM  
SATURDAY\*  
9 AM – 12 PM



PH: **8280 0090** FAX: **8280 0030**  
SHOP 1B / 6 BLACKTOP ROAD, ONE TREE HILL, 5114

### Looking for Roller Shutters?

For a FREE Measure & Quote  
Call Your Local Supplier



**ESJ INSTALLATIONS PTY LTD.**  
One Tree Hill

Contact Earl on **0409 426 255**  
or A/H: **8280 7741**

A1 Quality Workmanship & Materials  
Repairs and Conversions on Existing Shutters

**WE WILL NOT BE BEATEN  
ON PRICE!!**



### TIMMEL PLUMBING SERVICES

CALL A LOCAL

DOMESTIC - COMMERCIAL - INDUSTRIAL

- GENERAL PLUMBING & MAINTENANCE
- HOT WATER REPAIRS & REPLACEMENT
- DRAIN CLEANING & CAMERA INSPECTION
- ALL SEPTIC TANK INSTALLATIONS
- WE CAN ALSO DO:

RETAINING WALLS - CONCRETE WORK &  
EARTHWORKS

CALL TIM ON

**0419 550 497**

Lic. BLD179279

## One Tree Hillians Out & About

If you have any photos you would like to see in the Grapevine, please send in to [oth.grapevine@bigpond.com](mailto:oth.grapevine@bigpond.com)



ABOVE: Glow in the dark fungus at Para Wirra—Photo credit Darren Williams from “Photographing Para Wirra Conservation Park” Facebook page.

BELOW: Foggy morning sent in by Gillian Emmerson



BELOW: OTH Junior Primary PJ Day  
Photo from the OTHPS facebook page



Couple  
more  
photos  
coming



# Playford Council ~ Local Councillor's Report

Dear Fellow Ratepayers and Residents,

It has been an extremely interesting month with a decision on the rates at the Ordinary Council Meeting (25th June 2019). While I voted against the 3.3% increase there was majority support for the motion to be Carried. I was supporting a maximum increase of 3% which consisted of the CPI index, the Grenfell Centre and the State Government Waste Levy increase. The last-minute announcement of the State Governments 40% increase in the waste levy added a 0.7 % increase to the rates in this budget (approximately \$532,000) and a further 0.4 % to next year's budget (approximately \$332,000).

The State Government's decision to increase a levy by 40%, in my opinion goes directly against their rate capping policy upon which they supported. While I am a strong supporter on reducing waste to land fill, I do not believe this levy (tax) to ratepayers is the right answer.

The Adoption of the 2019 Annual Business Plan and Budget, 2019/20 Rating policy and 2019/20 Rate Rebate policy was at the Special Meeting on Tuesday the 2nd July 2019. The major difference was an adjustment in borrowings and debt from \$169 million to \$173.1 million and that the 3.3% did not include the required funding under the Black Spot Funding Program. On the positive side, Uley Road and Gawler- One Tree Hill Road junction upgrade will go ahead.

At the Strategic Planning Committee Meeting Tuesday, the 9th July 2019, the Rural Road Sealing policy was raised at 5.1. A motion was moved, and a division was called with the minutes being freely available on the council's internet site. There are several concerns with costs associated to the Rural Roads Sealing program, which in my opinion needs to be addressed. I will continue to do my best to adequately addresses these concerns.

If anyone would like to further discuss the rates or other items, please give me a call. I'm always happy to meet with the community and if there is an interest by the local community, I will organise a monthly coffee and chat event.

Until next month.

Best wishes and regards,

*Cr David Kerrison*

Phone: 0478283879 / Email: [crdkerrison@playford.sa.gov.au](mailto:crdkerrison@playford.sa.gov.au)

keep warm and drink  
COFFEE



## Visit Para Wirra in Winter!

The refreshing winter rains transform the park as the South Para River fills with water and the green ferns, mosses and native plants come flourishing back to life.

Take a walk along the [Hissey loop trail](#) and look for the interestingly coloured [fungi](#). Look at the bases of the stringy barks and you may spot a [ghost mushroom](#). If you're camping in the park overnight, head out for a night walk and try to spot them glowing in the dark!



**National  
Parks**  
South  
Australia

**WOMBAT'S**  
**Asphalt, Spray Seal & Civil**

CONTACT 0417 456 656

**PROPEST** 1800 24 22 21  
 management services

**We Service any Pest  
 No Problem!**

\* Termite/White Ant Removal      \* Termite Baiting Systems  
 \* General Pest Control              \* European Wasp & Bee Removal  
 \* Free Site Assessment  
 \* Existing and Pre Purchase Property Inspections

[www.propestcontrol.com.au](http://www.propestcontrol.com.au)  
 PO Box 193  
 One Tree Hill, SA 5114

**DEPENDABLE**  
 GARDEN MAINTENANCE

EXPERT SERVICE – AFFORDABLE PRICES  
 100% SATISFACTION GUARANTEED

**HUGE RANGE OF SERVICES**  
 Call us for a free no obligation quote  
**Jon: 0409 265 863**  
[www.dependablegardenmaintenance.com.au](http://www.dependablegardenmaintenance.com.au)

**HOME & GARDEN  
 Mr Clip  
 THE SPECIALISTS**

Professional Tree  
 & Stump Services  
 Call James for a free quote

**8365 8000**

**PE PUCCHINI**  
 electrical

**Local Electrician**  
**All Electrical Work**

- Sheds and Carports
- Switchboard alterations and upgrades
- Bores and Pumps
- Security Lighting
- After Hours Call Out Service
- Friendly, Reliable Service
- FREE Quotes

Call Cosi Puccini on  
**0421 773 673**

Email: [cosipuccini@bigpond.com](mailto:cosipuccini@bigpond.com)  
 Lic-PGE 177700  
 ABN-94 535 175 644

**DOMESTIC**  
**COMMERCIAL**  
**INDUSTRIAL**

**PE PUCCHINI**  
 electrical

**Olympic Boring Contractors Pty. Ltd**  
**Pump Sales & Service**

**Specializing in Design & Installation  
 of Submersible Pumps**

**Supply & Installation of Domestic Pumps  
 including Firefighting Pumps & Solar Pumps**

**Agents for Grundfos and Lowara**

**Sales & Pump Service**

**Over 35 Years of Experience**

**Call Michael Ferraro**  
**OTH Resident for almost 30 years**

**Ph: 8380 9474**  
**0408 847 060**

## Riddle Me This!

1. *Whoever makes it, tells it not. Whoever takes it, knows it not. And whoever knows it wants it not.*
2. *Has feathers but can't fly. Rests on legs but can't walk.*
3. *What was the longest river in the world before the Amazon River was discovered?*
4. *They can swim but they're not fish, they are slow but they are not turtles, they live and hang from tree but they're not monkeys. What are they?*

ANSWERS—PAGE 22



Can you find the Oscar Statue among the C3POs?



## Where in One Tree Hill?

In each Grapevine issue I feature a photo which will be at any location in One Tree Hill township or the surrounding areas. Your challenge is to guess where the picture was taken. The answer will be in the next edition... See if you can guess where this is?

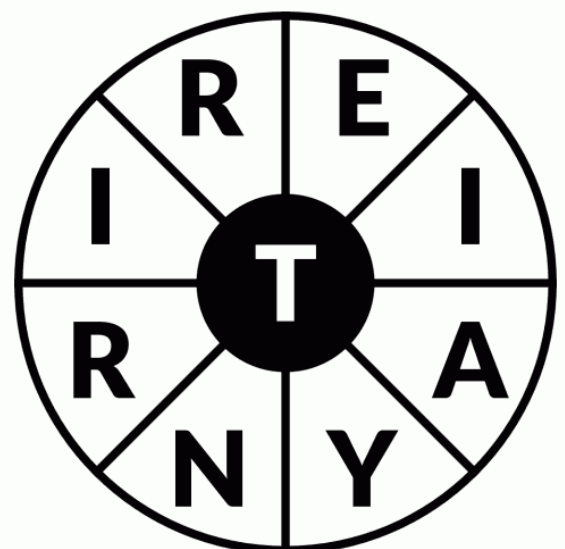


LAST MONTH'S ANSWER:

Lotto sign out the front of the OTH Diner

## Word Wheel

This word wheel is made from a 9 letter holiday themed word. Try and find that word, then make as many words of any length as you can from these letters. You can only use each letter once, and each word must include the letter T.





# 2019 Calendar Photo Competition

Open 15 July - 15 August 2019

CE Property Group is asking you to snap a picture highlighting our company colours **Purple or Teal** for this year's Calendar Photo Competition. Your subject could be anything, eg flora, fauna, architecture, art, landscapes.. get as creative as you can!

Enter your photo for a chance to win a share of \$1,400 worth of prizes PLUS your photo featured in our 2020 Community Calendar. Calendars will be created using 12 winning photographs and on sale in the lead up to Christmas. All sale profits will be donated to a local community activity, group or initiative.

For Terms and Conditions or more information call us on 1300 001 321 or visit [cepropertygroup.com.au/news/competition](http://cepropertygroup.com.au/news/competition). Good luck!

 @cepropertygroupau

 @cepropertygroup

[www.cepropertygroup.com.au](http://www.cepropertygroup.com.au)

Birdwood • Mannum • One Tree Hill

1300 001 321 • [mail@cepropertygroup.com.au](mailto:mail@cepropertygroup.com.au)  
RLA100925

**CE PROPERTY**  
GROUP 

## One Tree Hill Represented at SA Junior Heifer Expo

Another year at the SA Junior Heifer Expo is done and dusted, and our Kamcheyenne Limousin team (Natasha, Emi and Jack) did us proud out there. Despite not placing (and with 175 exhibits there was a lot of competition), we thought our team of three handled themselves fantastically. You did great guys!!

If you would like to meet the cows, Kamcheyenne Limousin are likely to bring them to the markets for people to meet as the weather gets warmer. Natasha, Emi and Jack with their three cows feature on the front cover this issue.

*Article and photos submitted by Kamcheyenne Limousin*





## What's Flowering In My Garden?

It's mid winter and cold but it's very pleasing to be still receiving some much needed and welcomed rain and showers. At this time of the year, many Correas are displaying a range of vibrant pink, red, orange and white flowers. Some Hakeas are still providing bright cheery coloured flowers whilst the flower buds of others are just growing, ready to burst open during Spring.

The Thryptomenes are about to burst into flower to provide a long lasting display but Thryptomene baeckeacea is always the first of the Thryptomenes to flower and brighten up the garden. Being quite a compact low growing plant, approximately 60cm high and 1m wide, it is covered with tiny bright pink/purple flowers that are found along every stem of the this beautiful plant. The aromatic leaves of this and some other Thryptomes are very small and rounded. During late Autumn and early Winter when not many plants are in flower, this plant is a very welcome bright addition to the garden. It can be planted as a border plant or in a rockery but can be grown to fill in a gap between other larger plants. As a mature plant it offers shelter for small birds, especially the Blue Wrens.

There are many Thryptomenes that can be planted in our gardens but Thryptomene baeckeacea is perhaps one of the best as it flowers early in Winter and it's brilliant pink/purple flowers provide a stunning display for many months.

Just Beautiful.

*Heather Fischer*

# One Tree Hill Scout Group ~ Cub Pack News

On the first weekend of the July school holidays, 20 One Tree Hill cub scouts, their leaders Akela and Raksha, and a couple of parents headed out to a weekend of fun and learning on their Bushcraft Camp at Blackham Bush Camp—a property owned by Trinity College which is adjacent to Para Wirra on Frank Barker Rd. Arriving in the dark, the cubs set up their own gear in their tents and then headed out on a short night hike, where we stopped to learn how to find south using the Southern Cross, and we listened quietly in the dark for a while to see what we could hear.



The next morning, cubs built stick cubbies before breakfast. Then, refuelled with bacon and eggs cooked by parent volunteers, the cubs began learning about bush safety, before finding out about how to collect water from nature, and how to make it safe to drink. Akela dug out a spot to make a water still, and together the cubs collected damp grass and leaves to place in it before it was sealed up and covered with plastic to let the sun extract the water. The cubs each found their own spot to collect water from the leaves on the surround-

ing trees, sealing it up with a plastic bag to check and collect later after a day of sun. Then, the cubs learned how to find North using an analog watch. Most cubs don't wear analog watches anymore, but that's OK! It's easy to draw your own clock on the ground if you know the time, you can still find North!

Hunger was building up again, but Raksha told the cubs that if they wanted to have lunch, they would need to build their own fires and cook their own hot dogs... after first learning how to strike a match properly, and pay attention to fire safety rules and laws. It was a little windy, and some fires were hard to light, but in the end only a few of the hot dogs exploded, and the cubs were successful so nobody went hungry.





The afternoon was spent on a 5km hike around the property, spotting roos, scaling a very steep hill, checking out an old mine, and spending time building friendships. Back at camp, the cubs continued on their stick cubbies before dinner. A campfire with marshmallows and fun stories followed, then into bed early, exhausted from the long day—just before the rain started. The rain stayed with us until morning, but then it cleared.

After pancakes for breakfast we headed out to the Grass Tree Track on the northern boundary of Para Wirra, where we spent time weeding the boneseed along the track. The cubs always love this weeding activity, which is also a great service to our local conservation park, helping to control the spread of boneseed. After lunch on Sunday, cubs finished packing up their own ger, and we got straight into packing down the tents—which were still a bit wet but had dried out a fair bit thankfully. All cubs who participated in this camp will be presented with their Bushcraft Level 1 achievement badge in term 3. many thanks to the volunteers who helped make it happen.

*Photos and Article: Bindi Hawkey "Raksha", OTH Scout Group*





ABOVE: The Buddy Bench ready for opening / RIGHT: Library window decoration

Photos from OTHPS Facebook Page



**DID YOU KNOW WE SELL FIREWOOD?**



**Seasoned Firewood**

approx. 1/2 tonne

**\$180**

excluding delivery

We also sell  
Kindling  
Firelighters  
Matches



Did you know we also  
sell Rainwater Tanks

**maxiplas**  
"MAXIMUM QUALITY, MAXIMUM STRENGTH, ITS GOTTA BE MAXIPLAS"

**SHOP 4, 9 Blacktop Rd, One Tree Hill**  
Phone/Fax: 08 8280 7680  
E: [sales@onetreehillfodder.com](mailto:sales@onetreehillfodder.com)

**Olympic Boring Contractors Pty.Ltd**  
**DRILLING WATER WELLS**



**Irrigation, Stock and Domestic  
Bores, Specialized Machinery to  
Drill up to 250m with Mud,  
Air & Auger**

Call Michael Ferraro - Resident of OTH for 27 Years

**Ph: 0408 847 060**  
**Or: 8380 9474**

## One Tree Hill Primary School News



On Friday the 5th July at One Tree Hill Primary School, we enjoyed the official opening of the school's "Buddy Bench". The event was celebrated with a BBQ.



A group of children were involved with the painting. We all read a book about the Buddy Bench and made a display on the library window with "Everybody needs a buddy", showing gorgeous pictures drawn by the students.

The Buddy Bench is a tool for positive mental and emotional health. It is a special place in a school playground where a child can go and sit when they want someone to talk to. What an excellent initiative at our local school!

## One Tree Hill Tennis Club News

Winter is a quiet time at the Tennis Club, however the good news is that the committee have been meeting behind the scenes and planning our registration day. The new drainage on the Eastern side of the courts has been working a treat, and our social players through winter evenings have been enjoying the newly resurfaced courts.

Registration for all players, whether new to the club or current members, will begin at the end of August, with our registration day planned for **Sunday September 8th 2-4pm**. Please contact the Tennis Club for details and there will be an ad in the September Grapevine.

The Summer season commences Mid-October, usually the first week back after school holidays. Pre-season training will commence the week prior to this. If you have children interested in taking up tennis, even if they have never played before, please feel free to contact one of our friendly committee members for further details on how to become involved. One Tree Hill Tennis Club is small and very family oriented, with an experienced well-functioning committee. We are in need of new players! Come and join in the fun and experience the benefits that tennis has to offer.

Garry Evans (Pres. 0415 399 658) / Tracy Philp (Sec. 0417 865 785) / Lee-anne Voigt (Juniors 0414 718 501)



*Garry Evans  
President  
One Tree Hill Tennis Club*





# One Tree Hill Institute Hall Hire

The One Tree Hill Institute is a beautifully maintained building with two inter-joining large halls, a complete kitchen and bar area.

The hall has a new surround sound system, TV, microphone facilities, and heating and cooling.

Outside you will find a sheltered playground that leads to picturesque garden areas which are ideal for photos.

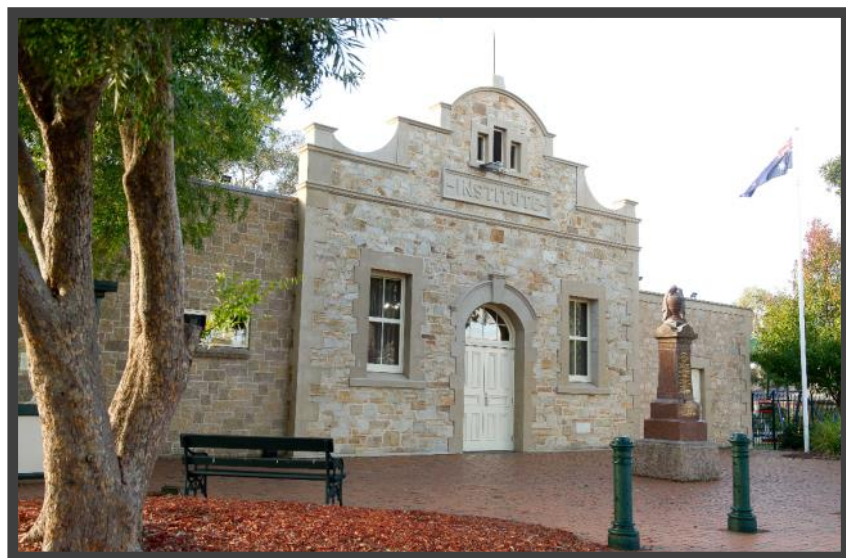
The One Tree Hill Institute is an ideal location for Weddings, Engagement Parties, Birthday Parties, Reunions and Meetings.

*Why not come and have a look or check us out?*

**[www.onetreehillhall.com.au](http://www.onetreehillhall.com.au)**

**Ph: 8280 0000 / 0459 105 045**

**Email: [oth.hall@bigpond.com](mailto:oth.hall@bigpond.com)**



*LEFT AND BELOW: These photos show the One Tree Hill Institute decorated and set up for a recent 100th birthday celebration.*



# One Tree Hill Uniting Church Update



## SUNDAY MORNING SERVICE - 10 AM

### WEDDINGS, BAPTISMS & FUNERALS

The church is available for the above Services.  
For further information please phone  
Edna on 8255 7987.

### SUNDAY NIGHT YOUTH GROUP

Meet at various locations on Sundays 5.30 - 7.30 pm  
Yr 8 to Young Adults welcome.  
Join us for food, friendship and fun!  
If you would like more information and details of next  
meeting, please contact Kendrie on 0419 994 332

### GIFT FILLED SHOE BOXES FOR CHILDREN

Once again it's time to start filling shoe boxes ("Gifts of Love") to bring joy and hope to children in desperate situations around the world. This is done in conjunction with "Samaritans Purse" – a non-profit Christian organisation. This year our Youth Group will be organising this event. If you would like a box to fill, or more details, please phone - Kendrie on 0419 994 332.



**Our Vision - "People of Faith, sharing God's love  
as we Worship & Serve in the Community"**



### AL-RU FARM - OPEN GARDEN

#### SUNDAY 22ND & MONDAY 23RD SEPTEMBER 2019

Once again we will be catering for lunch, morning and afternoon tea on both days. Don't miss this opportunity to come and view the beautiful gardens, and enjoy our scrumptious Devonshire Teas and lunches.

### SIMON BRYANT, CELEBRITY CHEF VISIT

On Wednesday 26th June, we were once again thrilled to have Simon as our Fellowship Guest Speaker. Simon gave a demonstration of his cooking skills by making a "parsnip & cheddar wakame soup" which was absolutely delicious. Whilst cooking, he also gave a very interesting talk on dried seaweed, mekabu, and wakame.

Samples of the soup were enjoyed by an audience of 50 people. In his earlier years, Simon lived in One Tree Hill and attended the local primary school. He enjoys catching up with old friends or hearing news of them. Simon is a passionate supporter of 'Animals Asia' sponsoring a toothless 'rescued' bear called 'Charlotte'. We look forward to Simon's visit again next year in June.

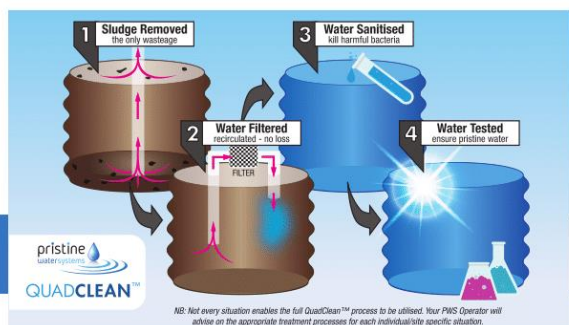
### MONTHLY FELLOWSHIP MEETING

Held 4th Wed each month  
Next Meeting  
10.00 am - Wednesday 28th August -  
will be a "Quiz Morning"

**ALL ENQUIRIES – PHONE MAUREEN - 8280 7368**

# WE CLEAN WATER TANKS

Water Filters - Supply & Service



Water Tank Cleaning  
Minimal Water Loss  
Water Filtration Systems

Call for a FREE Tank Water Test

**When was your  
Rainwater Tank  
last cleaned?**



**Tim Cook**  
**M: 0430 311 382**  
E: [tim@pristinewater.net.au](mailto:tim@pristinewater.net.au)

We Clean Water Tanks  
Water Filters Supply & Service

[www.pristinewater.com.au](http://www.pristinewater.com.au)

## One Tree Hill Community Information Advertorial



### IS YOUR RAINWATER TANK SAFE?

With winter finally here, now is the opportune time to have your rainwater tank professionally inspected and cleaned. It is often an overlooked fact, that over time your tank can build up sludge, organic matter, sediment and harmful bacteria including e-coli and other nasties. It is recommended that water tanks should be inspected on a regular basis. Pristine Water Systems (PWS) Tim Cook says "at PWS we have developed a Quadclean™ system that not only removes sediment and sludge from the bottom of the tank, but also sanitizes the water that is left.

In most cases there is minimal water loss, a fact that is becoming ever more critical in times of drought. The rejuvenated water is passed through a filter whilst the sanitiser works its magic, which is not Chlorine based. Being a local owner operator, I understand the importance of a safe clean water supply so would encourage all water tank owners to consider—when was the last time they had their tank cleaned?

Contact Tim at PWS Adelaide Hills on 0430311382 before 30<sup>th</sup> August 2019 to book in a FREE Tank Water Test\*.

\*Conditions Apply: PWS Free Onsite Tank Water Test includes pH, TDS and Sediment Sampling. Property must be within the One Tree Hill District. Subject to availability.

*If you advertise in the OTH Grapevine, and you would like to write a short advertorial to help the OTH community learn more about you, your products or services, please contact the OTH Grapevine Compiler on [oth.grapevine@bigpond.com](mailto:oth.grapevine@bigpond.com).*

To Feature : Email: [oth.grapevine@bigpond.com](mailto:oth.grapevine@bigpond.com)

# One Tree Hill Community Book Exchange Project



In June, a member of the One Tree Hill Community put forward the idea of a community book exchange to One Tree Hill Progress Association. This was discussed at the Progress meeting in July, and the concept was supported by the committee members.

## *So, what exactly is a “Community Book Exchange”?*

The idea of a book exchange is to provide a safe place in a publicly accessible area of the community, where books of any kind can be stored (a weatherproof shelf or cupboard of some sort). Members of the community are encouraged to take books of interest to read or keep, and swap with unwanted books which may be of interest to others. The book exchange is informal, so there is no actual loan fee or recorded “borrowing”, and it relies on borrowers respecting the space, and using it as intended. It can include books for all ages. Book exchanges can share the joy of reading with others, build a sense of community, and even inspire creativity. The internet has links for many networks of such book exchanges which are thriving.

Have a look at some of the photos of book exchanges on this page and you will get the idea. One Tree Hill Progress Association would like to start out fairly simple and small with our book exchange, and if it proves successful, we can build upon the concept over time.

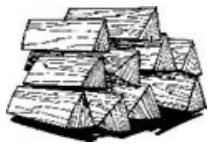


For now, these things are being considered by OTH Progress Association:

1. Organise a suitable (moderately) weatherproof cupboard/box with doors
2. Find a suitable place to put it (OTH Progress will need to agree to this step) – it will need to be in a public area and accessible 24/7 by pedestrians. Council approval may be needed if it is on the Institute property
3. Installation
4. Find someone to manage it, and we can encourage regular users to help keep it tidy/report issues
5. Stock it with books (do you have any?)
6. Once up and running, advertise it here in the OTH Grapevine

If you have a suitable enclosure to donate, or you would like to be involved in this new community project in some way, please contact Steve Huckstepp, (OTH Progress Association President) by email [oth.progress@bigpond.com](mailto:oth.progress@bigpond.com), or email OTH Grapevine on [oth.grapevine@bigpond.com](mailto:oth.grapevine@bigpond.com).

## FIREWOOD SPLITTING



### Sick of splitting Firewood?

I will come to your property to cut and/or split your felled/fallen or salvaged wood

**Ph: Angus on  
0412 395 017**

Fully Insured

## EARTHWORKS

- Driveways, Paving Concreting
- Post Holes, Trenching
- Turf & Irrigation
- Rubbish & Scrap Removal  
Site Prep
- Retaining Walls  
Shed Pads
- Livestock Burial & More....



### EARTHWORKS

BLD288629  
Ph: Rick



**0418 829 332**



## TAKE A BREAK ANSWERS

### RIDDLES:

1. Counterfeit money
2. A mattress
3. The undiscovered Amazon River
4. Sloths

9 LETTER WORD: ITINERARY

## MAINTENANCE

### WARNER'S HOME MAINTENANCE

- Gardening
- Odd Jobs
- Painting
- Pruning
- Gutter Cleaning
- Basic Home Maintenance

**Ph: Pete**

**0433 619 108**

## GARDENING

### JIMS MOWING

- Lawn Mowing
- Tree Lopping
- New Lawns
- Fertilising
- Weed control
- Pruning
- Rubbish Removal
- Landscaping
- Shed Cleanouts

**Ph: Geoff on**

**0407 733 832**

If no answer  
call 131546

## TV/ANTENNAS & CCTV

### TELESIGNAL ANTENNA SYSTEMS & CCTV CAMERAS

TV Antenna installations  
and service  
Extra TV outlets  
Watch Foxtel in  
multiple rooms  
CCTV Systems  
(4 camera system from  
\$999 installed)  
Data & Telephone points  
Wi-Fi Antennas to extend  
your Wi-Fi signal  
Contact local resident  
Ian George  
on 0417 809 403  
or email:  
[telesign@bigpond.net.au](mailto:telesign@bigpond.net.au)

## ADVERTISE HERE

**DOUBLE  
CLASSIFIED  
ADS \$25**

## ADVERTISE HERE

**SINGLE  
CLASSIFIED  
ADS \$13**

## HOME MAINTENANCE



### GGD Maintenance

Servicing North/North Eastern area for  
20+ years

- Flyscreens
- Small tiling jobs
- Painting
- Doors & Locks including sliding doors
- Supply, repair or Install Built In cupboards
- Gyprock Wall repairs and much more.....

**\*Free Quotes**

**\*No Job too small**

**Phone Colin**

**Mob: 0411 581 986**

**Builders Licence:**

**RL153319.**

Find us on Facebook



## OTH NATURE WATCH



*Have you seen New Holland  
Honeyeaters in One Tree Hill?*

## A to Z of Advertisers ...

Angus Firewood Splitting	0412 395 017	One Tree Hill Fodder Store	8280 7680
CE Property Real Estate	8280 0033	One Tree Hill Gift & Post	8280 0090
Dependable Garden Maintenance	0409 265 863	Para Trees	0408 857 931
Earthworks (Rick)	0418 829 332	Pristine Water Systems	0430 311 382
ESJ Roller Shutters	0409 426 255	Pro Pest Services	1800 242 221
GGD Maintenance	0411 581 986	Puccini Electrical	0421 773 673
Jim's Mowing	0407 733 832	Roger Girdham Electrical	0417 853 863
Just Wrecking Toyota	8359 4499	Telesignal Antenna Systems & CCTV	0417 809 403
Mr Clip Gardening	8365 8000	Timmel Plumbing	0419 550 497
NCPS Industrial Pumps	8285 2344	Vanin Plumbing	8280 7970
Olympic Drilling	0408 847 060	Warner's Home Maintenance	0433 619 108
Olympic Boring	0408 847 060	Wombat's Asphalt, Spray Seal & Civil	0417 456 656

## Community Directory ...

<b>Council Members</b>	<b>David Kerrison</b>	<b>0478 283 879</b>	<b>OTH Progress Association</b>	<b>Secretary</b>	<b>8280 7095</b>
	<b>Veronica Gossink</b>	<b>0411 733 847</b>		<b>Treasurer</b>	<b>0406 382 342</b>
<b>Council Member &amp; JP</b>	<b>Andrew Craig</b>	<b>0417 016 160</b>	<b>OTH Playgroup</b>	<b>Monday</b>	<b>0426 978 262</b>
<b>Cricket Club</b>	<b>Mike Banwell</b>	<b>0415 177 955</b>	<b>OTH Primary School</b>	<b>Principal</b>	<b>8280 7027</b>
<b>Federal MP</b>	<b>Nick Champion</b>	<b>8254 2422</b>	<b>Para Wirra Conservation Park</b>	<b>Office</b>	<b>8280 7279</b>
<b>Fodder Store</b>	<b>Dean Whitehorn</b>	<b>8280 7680</b>	<b>Pharmacy</b>	<b>Shadi Ibrahim</b>	<b>8280 7890</b>
<b>General Store &amp; Diner</b>	<b>Sue and Anthony</b>	<b>8280 7020</b>	<b>Post Office</b>	<b>Wain</b>	<b>8280 0090</b>
<b>Home Assist</b>	<b>Playford Council</b>	<b>8256 0355</b>	<b>Scout Group</b>	<b>Mike Branson</b>	<b>0430 422 895</b>
<b>Northern Hills Pony Club</b>	<b>Sharon</b>	<b>0401 214 950</b>	<b>Senior Citizens</b>	<b>Phil Waldegrave</b>	<b>8522 3630</b>
<b>OTH Grapevine</b>	<b>Compiler / Editor</b>	<b>0435 269 564</b>	<b>Soccer Club Registrar</b>	<b>Tanya Abela</b>	<b>0414 828 981</b>
	<b>or</b>	<b>0448 208 338</b>			
<b>OTH Country Market</b>	<b>Enquiries</b>	<b>0457 107 817</b>	<b>State MP</b>	<b>Paula Luethen</b>	<b>8288 8218</b>
<b>OTH Institute Hall</b>	<b>Enquiries &amp;</b>	<b>8280 0000</b>	<b>Tennis Club</b>	<b>Garry Evans</b>	<b>0415 399 658</b>
	<b>Bookings</b>	<b>0459 105 045</b>	<b>Walking Club (Walkie Talkies)</b>	<b>Helen</b>	<b>8280 7035</b>

## Playford Council Contacts ...

24hr Emergency & Lost/Found Dogs 8256 0333

General Enquiries & Burning Permits (Seasonal) 8256 0333

Email: [playford@playford.sa.gov.au](mailto:playford@playford.sa.gov.au)

When telephoning council with request please remember to get a Customer Reference Number (CRN) to ensure registration and easy identification of your communication.



To Feature : Email: [oth.grapevine@bigpond.com](mailto:oth.grapevine@bigpond.com)

# WHAT'S ON



**Sep 8 — OTH Tennis Registration Day**  
**Sep 22/23 — ALRU Open Garden Days**

## COUNTRY MARKET



• CRAFT • COOK • GROW • FRESH

**Saturday August 3rd 2019 ~ 8.30am till 1pm**

One Tree Hill Institute  
 Blacktop Rd, One Tree Hill

New stallholder enquiries welcome.  
 0457 107 817 / oth.market@bigpond.com

## Mobile Library



**Alternate Fridays:**

**3:00pm—4:00pm**

**Opposite Blacksmith's Inn**

**2nd August**  
**16th August**  
**30th August**

## Next OTH Progress General Meeting

**Thursday 8th August 7:30pm**  
 OTH Institute, Black Top Rd, One Tree Hill



**Mondays**

**9:30am to 11:30am**

**Come along and join in the fun!**

For children 0-6yrs – Learn through play! Children have fun, learn and develop new skills and explore through play, painting and arts and craft.

Inside and outside facilities at the One Tree Hill Institute.

New members always welcome.

**Contact: Monday: Charlotte 0426 978 262**

## SENIOR CITIZENS

If you are over 50 years of age you are welcome to attend the One Tree Hill Senior Citizens. Our senior members of our community and surrounding neighbourhood meet:



**Every Tuesday afternoon at the**  
**One Tree Hill Institute from 1:30pm to 4:00pm**

There is a variety of activities to come along and enjoy. Their favourite being Carpet Bowls! Wonderful company, general chit/chat and a great environment to spend your Tuesday afternoons. All welcome.

**Contact: Phil Waldegrave on: 8522 3630**



## OTH Grapevine September Edition

**Wednesday 21st August**

**oth.grapevine@bigpond.com**

**0435 269 564 / 0448 208 338**